



**WORLD FEDERATION
FOR CHESS COMPOSITION**

**10th WORLD CHESS COMPOSITION
TOURNAMENT 2016-2017**

ENTRIES
SECTION E: HELPMATES

July 2016

Judging countries

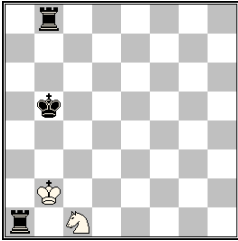
Greece, India, Israel, Serbia, Slovakia
(Ukraine as reserve)

Theme

In each line of play of a helpmate in 3 moves, Black gives a battery check to the white king.

At least two lines of play are required. Set play, multi-solutions and twins are allowed, but not duplex, Polish-type twins (all pieces change color) or zero-positions.

E001

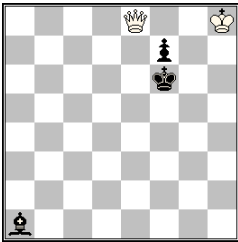


- a) 1. ♖a5 ♘e2 2. ♛a4+ ♔a2 3. ♜b4 ♘c3#
- b) 1. ♜a7 ♘d3 2. ♛a6+ ♔a4 3. ♜b6 ♘c5#
- c) 1. ♜a6 ♘e3 2. ♛a5+ ♔a3 3. ♜b5 ♘c4#

Ideal mate
 Miniature
 White minimal problem
 Two self-blocks
 Black battery
 Anti-critical move

- h≠3 (2+3)
 b) ♔b2 → b3
 c) ♘c1 → g2

E002

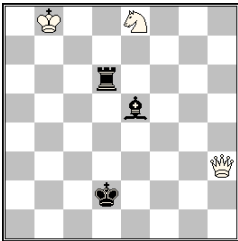


- a) 1. ♘d4 ♖a4 2. ♛e7+ ♜xd4 3. ♘f8 ♖d8#
- b) 1. ♛g5+ ♔g8 2. ♘h6 ♘f8 3. ♘h7 ♖h5#

Minimizing the number of pieces: 5 in a and 4 in b

- h≠3 (2+3)
 b) - ♜f7

E003

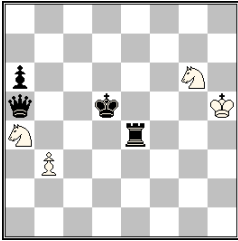


- 1. ♜d3+ ♘c7 2. ♘d4 ♖g2+ 3. ♘e3 ♘d5#
- 1. ♜c6+ ♘d6 2. ♜c2 ♖f1 3. ♘c3 ♘c4#

Miniature

- h≠3 (3+3)
 2.1...

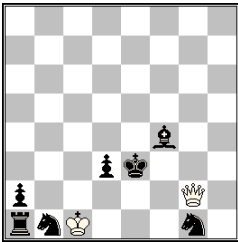
E004



- a)
1. ♖c6+ ♗e5+ 2. ♖b5 ♗c6 3. ♖b4 ♗a7+
 b)
1. ♖e6+ ♗c5+ 2. ♖f5 ♗e6 3. f6 ♗g7+

h#3 (4+4)
 b) ♜a6 → f7

E005

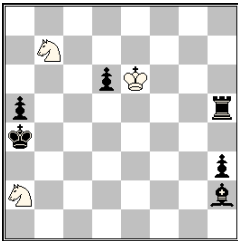


- 1. ♗a3+** ♖b2 2. ♖d1 ♗xg1+ 3. ♖d2 ♗f2# (ideal mate)
1. ♖d4+ ♖d1 2. ♖c3 ♗e4 3. ♖b2 ♗b4# (ideal mate)

Minimal problem
 Ideal mates
 Meredith

h#3 (2+7)
 2.1...

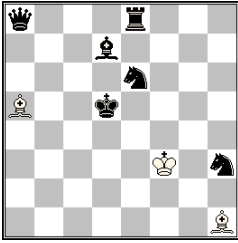
E006



- 1. ♗e5** ♖d5 **2. ♗b2+** ♖c4 3. ♗a3 ♗c3#
1. ♖e5+ ♖xd6 **2. ♖e3+** ♖c6 3. ♖a3 ♗c5#

h#3 (3+6)
 2.1...

E007



- a)
 1. ♖d6+ ♕e3 2. ♜c7+ ♔d4 3. ♝e6 ♞b4+
 1. ♜c7? ♕e3??

- b)
 1. ♕e5+ ♔g4 2. ♜d4+ ♕g5 3. ♞e6 ♜c7+
 1. ♜d4? ♕g4??

- c)
 1. ♜d4+ ♕e2 2. ♜c5+ ♔d2 3. ♞c4 ♞c3+
 1. ♜c5? ♕e2??

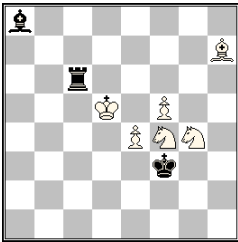
h±3 (3+6)

b) ♞h3 → d3

c) ♞d7 → f7

3 discovered checks by B♕ + 3 discovered checks by B♜e6, 3x2 different W♞ moves + 3x2 different self-blocks.

E008

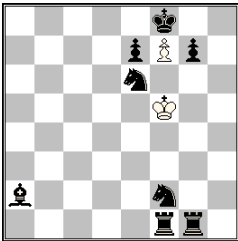


1. ♜c4+ ♕d6 2. ♕xe4 f6+ 3. ♔d4 ♜e2+
 1. ♜f6+ ♕c5 2. ♕xe4 ♜f2+ 3. ♕e5 ♜d3+

h±3 (6+3)

2.1...

E009

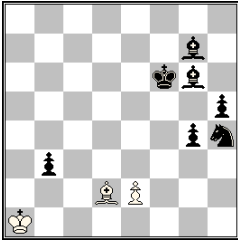


- a)
 1. ♜g4+ ♕g6 2. ♜h6+ ♕h7 3. ♜g8 fxg8♙+
 b)
 1. ♜d5+ ♕xe6 2. ♜c7+ ♕d7 3. ♜e8 fxh8♙+

h±3 (2+8)

b) ♞f2 → f4

E010

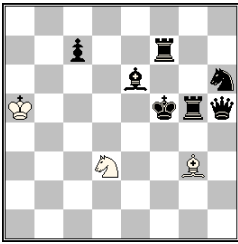


h#3 (3+7)
 b) ♖e2 → f2

- a)
 1. ♖f5+ ♔b1 2. ♙f6 e3 3. ♖g5+ e4#
 b)
 1. ♙h7 f4 2. ♖g6+ ♔b1 3. ♖h6+ f5#

4 thematic checks
 Change of the tactical moments in 1 and 2 black moves: (blocking, check - check, blocking)
 "Black-white and white-black" cover
 The black effect "departure- arrival"
 Battery echo-model mates
 Meredith

E011

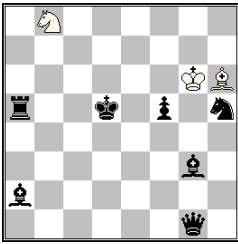


h#3 (3+7)
 2.1...

1. ♖f6+ ♗e5 **A** 2. ♗f5 ♗c6 **A** 3. ♖g6 ♙e5# **B**
 1. ♖g6+ ♙e5 **B** 2. ♙f5 ♙h8 **B** 3. ♖h7 ♗e5# **A**

Model mates
 In one solution, a white piece **A** moves to e5 in the first move and leaves it immediately in the second move. The square e5 is used as mating square by another white piece **B**. In the other solution, the roles of **A** and **B** are reversed

E012

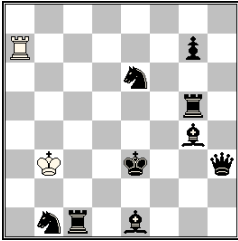


h#3 (3+7)
 b) ♞g3

- a)
 1. ♙c7+ ♔xf5 2. ♖d6+ ♔e4 3. ♙e6 ♙f8#
 b)
 1. ♗e4+ ♔f7 2. ♖e5+ ♔e7 3. ♖d5 ♗c6#

Checks of black royal battery

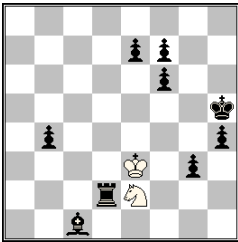
E013



- a) 1. ♖d2+ ♜b4 2. ♜c2+ ♜c4 3. ♙d1 ♜a2+
- b) 1. ♜d4+ ♜a4 2. ♜d5+ ♜b5 3. ♜ge5 ♜d7+
- c) 1. ♜e4+ ♜c4 2. ♜f5+ ♜d5 3.g6 ♜f7+

h#3 (2+9)
 b) ♜c1→e4
 c) ♜c1→f4

E014

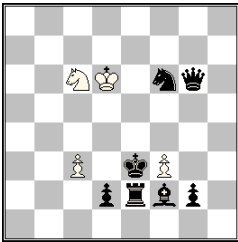


- a) 1. ♜d5+ ♜e4 A (♜f3?) 2. ♙h6 ♜f3 B 3. ♜g5 ♜f4+
- b) 1. ♜d7+ ♜f3 B (♜e4?) 2. ♙f4 ♜e4 A 3. ♙d6 ♜d4+

Thematic Battery check and Two different selfblocks in each solution
 Black Grimshaw
 White minimal, Meredith
 Tempo moves by white king and dual avoidance
 Reciprocal change of white moves in W1 & W2

h#3 (2+9)
 b) ♜h5 → e6

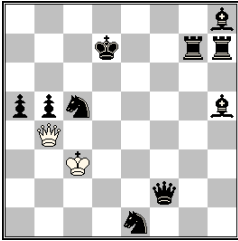
E015



- 1. ♜c2 ♜c5 2. ♜d3+ ♜b4 3. ♙e3 ♜e5+
- 1. ♜g3+ ♜e6 2. ♜xf3+ ♜f5 3. ♜e3 ♜d4+

h#3 (4+7)
 2.1...

E016

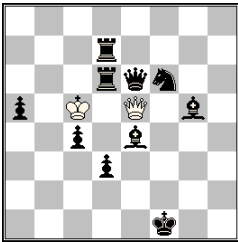


- 1. ♖c8 ♜xa5 (1... ♜e4?) 2. ♜c7+ ♖b4 3. ♜hd7 ♜a8+
- 1. ♖d8 ♜xb5 (1... ♜f4?) 2. ♜d7+ ♖c4 3. ♜he7 ♜b8+
- 1. ♖e8 ♜xc5 (1... ♜g4?) 2. ♜e7+ ♖b3 3. ♜hf7 ♜c8+

Echo
 Model mates
 Meredith
 Choice of the White's first move
 Minimal

h#3 (2+10)
 3.1...

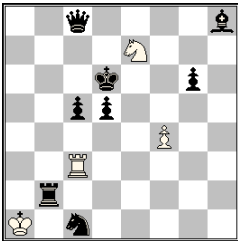
E017



- 1. ♘d5 ♖d4 2. ♘f4+ ♖e3 3. ♖e1 ♜a1+
- 1. ♜g4 ♖xc4 2. ♘d5+ ♖xd3 3. ♜g1 ♜e2+

h#3 (2+10)
 2.1...

E018

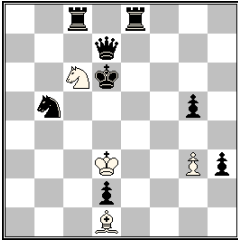


- a) 1. ♜e6 ♜xc5 2. ♜b7+ ♜c3 3. ♜d7 ♘c8+
- b) 1. ♜c6 ♜g3 2. ♜e2+ ♜g7 3. ♜e6 ♘f5+
- c) 1. ♜d7 ♜e3 2. ♜b6+ ♜e5 3. ♜c6 ♘b5+

Meredith with cyclic black blocks

h#3 (4+8)
 b) ♜g6 → c4
 c) ♘e7 → c7

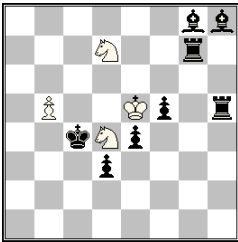
E019



h≠3 (4+8)
 b) ♖c6 → e7

- a)
 1. ♖e6+ ♜e2 2. ♜f5+ ♝e7+ 3. ♞g4 ♜f2#
 b)
 1. ♜c5+ ♜c2 2. ♜b4+ ♝c6+ 3. ♞a4 ♜b2#

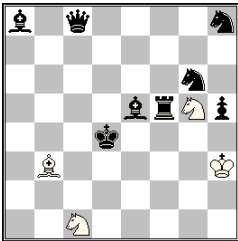
E020



h≠3 (4+8)
 b) ♖d4 → d8

- a)
 1. ♜f4+ ♜f6 2. ♞c5 ♝f5 3. ♞d5 ♝b6#
 b)
 1. ♞f7+ ♜f4 2. ♞c3 ♝b6+ 3. ♞d4 ♝e6#

E021

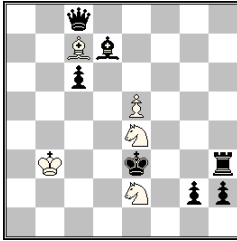


h≠3 (4+8)
 2.1...

1. ♞f4+ ♜g3 2. ♞e4+ ♜f2 3. ♞c3 ♝e6#
 1. ♞f3+ ♜g2 2. ♞d3+ ♜f2 3. ♞c5 ♝e2#

Battery checks occur in the first and second moves in each phase
 March of W♜ by different path
 Creation of the 2nd battery by the 1st battery checking move
 Self-block on different squares by rear and front pieces of the first battery (B♞c8/B♞f5).
 Exchange of functions of white knights (guarding piece/mating piece)
 Model mates
 Meredith

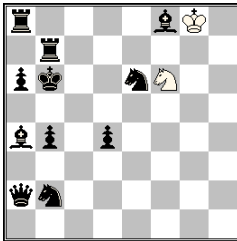
E022



1. ♔xe2+ ♖g3+ 2. ♕f2 ♙d6 3. ♗g1 ♙c5#
 1. ♔xe4+ ♖c3+ 2. ♕d4 ♙b8 3. ♗c5 ♙a7#

h#3 (5+7)
 2.1...

E023

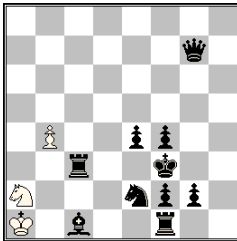


a)
 1. ♙d6+ ♖e8 2. ♙b8 ♖d6 3. ♙a7 ♖c8#
 b)
 1. ♖c5+ ♖d5 2. ♖b3 ♖xb6 3. ♙a3 ♖c4#

Mate from the thematic line
 Unpin with change of position of the battery
 Minimal problem

h#3 (2+11)
 b) ♔b6 ↔ ♞b2

E024

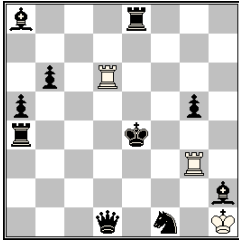


a)
 1. ♞e3+ ♖c3 2. ♗g4 ♖b5 3. ♖g3 ♖d4#
 1. ♙e3+? ♖c1 2. ♗~? (it cannot leave 1st rank) ♖d3 3. ♗g3 ♖e5??
 b)
 1. ♙e3+ ♖c1 2. ♗f2 ♖d3 3. ♗g3 ♖e5#
 1. ♞e3+? ♖c3 2. ♗g3 ♖b5 3. ♗f2 ♖d4+? 4. ♖xd4!

Chernous Theme
 Black-white Umnov in both variations
 Both mates are model
 Good harmony, simple twin
 Dual avoidance
 W ♖b4 is a cookstopper in both solutions

h#3 (3+10)
 b) - ♗f2

E025

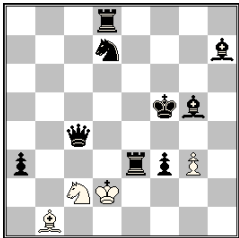


- 1. ♖f4+ ♜d5 2. ♜e3 ♜gxg5 3. ♜ae4 ♜df5#
- 1. ♖e5+ ♜f3 2. ♜e4 ♜df6 3. ♜d4 ♜3f5#
- 1. ♖f5+ ♜g2 2. ♜f4 ♜g6 3. ♜ee4 ♜2xg5#

Anti-Holzhausen, echoes

h#3 (3+10)
3.1...

E026

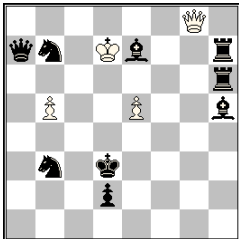


- 1. ♘f6+? ♖c1 2. ♜e6 ?? 3. ♜e5+ ♘e3#
- 1. ♜e6 ♘d1! (♘c1?) 2. ♘f6+ a (♜e5?) ♖c1 3. ♜e5+ b ♘e3#
- 1. ♜e5+? ♘d1 2. ♜g4 ?? 3. ♘f6+ ♘d4#
- 1. ♜g4 ♘c1! (♘d1?) 2. ♜e5+ b (♘f6?) ♘d1 3. ♘f6+ a ♘d4#

Play of two black batteries
Tempo-tries
The choice of tempo move
Reciprocal change of the black 2nd and 3rd moves
Model mates

h#3 (4+9)
2.1...

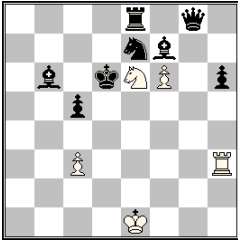
E027



- 1. ♘d6+ ♖c6 2. ♘xb5+ ♖xb5 3. ♜e3 ♜c4#
- 1. ♘f6+ ♖e6 2. ♘xe5+ ♖xe5 3. ♘e2 ♜xb3#

h#3 (4+9)
2.1...

E028

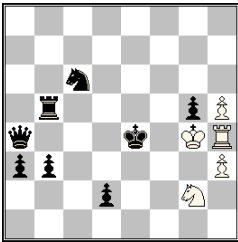


h≠3 (5+8)
2.1...

- 1.c4 ♖g5 2.♔c5 ♜h5 3.♝c6+ ♜e4#
1.♔d7 ♜d4 2.♔d8 ♜d3 3.♝c8+ ♜e6#

Model mates

E029

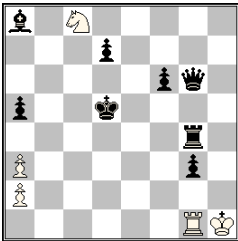


h≠3 (5+8)
See solution

- a) Diagram
1.♔d5+ ♜f5 2.♜b4 ♜c4 3.♜d6 ♜e3#
b) ♜g2→g1
1.♔e5+ ♜xg5 2.♜c4 ♜d4 3.♜e6 ♜f3#
c) =b) + ♜b4
1.♔e3+ ♜g3 2.♜e4 ♜f4 3.♜d4 ♜f3#
d) =c) ♜g1→a1
1.♔d3+ ♜f3 2.♜d4 ♜e4 3.♜c4 ♜e3#

Helpmate of the future with 2 connected pairs of solutions a+b/c+d.
Mating moves are ♜e3/♜f3 in a/b and ♜f3/♜e3 in c/d

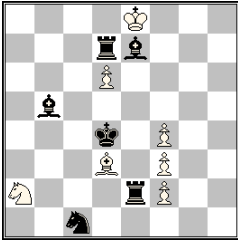
E030



h≠3 (5+8)
4.1...

- 1.♔e4 ♜e1+ 2.♔f5+ ♜e4 3.♜g5 ♜d6#
1.♜c2 ♜d1+ 2.♔c4+ ♜d5 3.♜c3 ♜b6#
1.♔c6 ♜c1+ 2.♔b5+ ♜c6 3.♜a4 ♜a7#
1.♜f5 ♜b1 2.♔e6+ ♜b7 3.d5 ♜e7#

E031

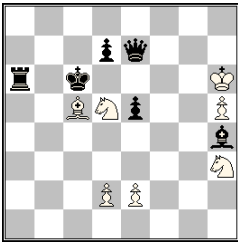


h#3 (7+6)
2.1...

1. ♖xd6+ ♜xb5 2. ♖d5 ♜xc1 3. ♜c5+ ♜xe2+
1. ♜xd6+ ♜xe2 2. ♜c5 ♜c3 3. ♖d5+ ♜xb5+

Battery checks occur in the first and third moves in each phase
Self-block by front pieces, with reciprocal gate-opening annihilation
Rear pieces captured by exchanged white pieces
Model mates

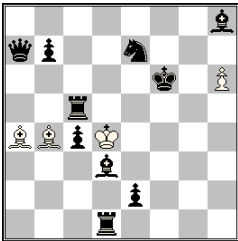
E032



h#3 (7+6)
2.1...

1. ♜xc5+ ♜b6 2. ♜d4 ♜f2 3. ♖c5 e3+
1. ♜xd5+ ♜b6 2. ♜e4 ♜g6 3. d5 d3+

E033

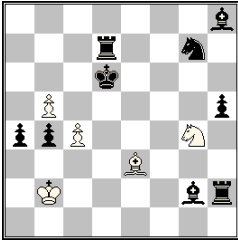


h#3 (4+10)
b) ♖b4

- a)
1. ♜h7+ ♜d2 2. ♜g6+ ♜e4 3. ♜f6 ♜e8+
b)
1. ♖g5+ ♖b6+ 2. ♜f5+ ♜e3 3. ♜e5 ♜d7+

2x2 thematic moves

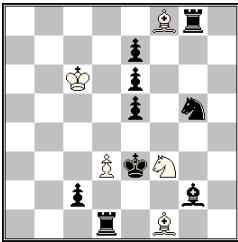
E034



1. ♖e6+ ♗e5 2. ♜f6 ♜b6 3. ♜e7 ♗f7+
 1. ♜c6+ ♜d2 2. ♜e2 ♜b6 3. ♜e6 ♜xb4+

h#3 (5+9)
 2.1...

E035

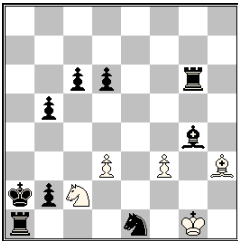


1. e4 ♗e5 2. ♖d4 ♜g7 3. e3+ ♗f3+
 1. ♗e4 ♗g5 2. ♖d2 ♜h6 3. ♗c3+ ♗f3+

Black interference
 The first move of white to the initial square of the first move of black
 Switchback of white knight in mating move

h#3 (5+9)
 2.1...

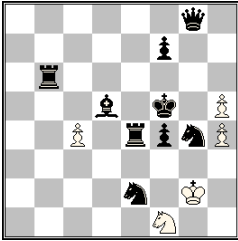
E036



1. ♗xd3+ ♜f1 2. ♗e1 ♜xb5 3. ♜b1 ♜c4+
 1. ♜xf3+ ♜g2 2. ♜g4 ♜xc6 3. ♜b1 ♜d5+

h#3 (5+9)
 2.1...

E037

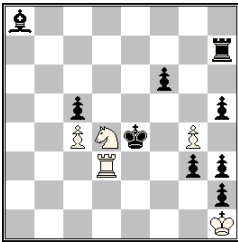


1. f6 ♖h2 2. ♘e5+ ♗g4 3. ♔e6 ♖h6#
 1. ♖f6 ♗d2 2. ♜e5+ ♗e4 3. ♙e6 ♗d6#

All blockings are in pairs identical (play on same square- thematic battery piece block same square e5, piece of direct unpin block same square e6
 Effect "departure-arrival"

h#3 (5+9)
 2.1...

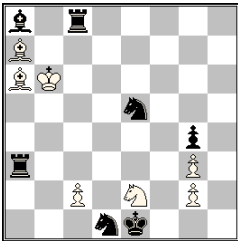
E038



1. ♖f4+ ♖f3+ 2. ♗xg4 ♗e6 3. ♖b7 ♖f4#
 1. ♖e5+ ♗c6+ 2. ♗e6 ♖d5 3. ♖e7 ♗d8#

h#3 (5+9)
 2.1...

E039

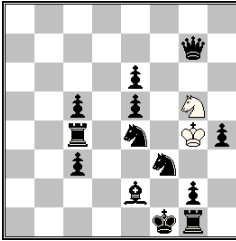


1. ♙xg2 ♗f4 2. ♗f3 (♗c4?) ♗b7 3. ♗d2+ ♗xg2#
 1. ♖xc2 ♗d4 2. ♗c4+ (♗f3?) ♗c7 3. ♗d2+ ♗xc2#

Dynamic creation of two different black batteries
 Black Indian

h#3 (7+7)
 2.1...

E040

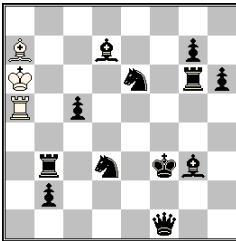


1. ♖e1+ ♔xh4 2. ♜f2+ ♜e4 3. ♙g4 ♜g3+
 1. ♜f2+ ♔h5 2. ♖e1+ ♜f3 3. ♖g4 ♜h2+

Fourfold rendering of the theme
 White minimal

h≠3 (2+13)
 2.1...

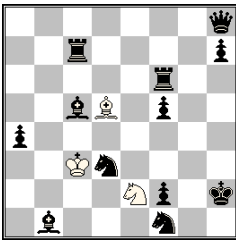
E041



a)
 1. ♖f2 ♜xc5 2. ♖e1+ ♔a5 3. ♖f3 ♜c2+
 b)
 1. ♖g5 ♜xc5 2. ♜ef4+ ♔a7 3. ♙g4 ♜e7+

h≠3 (3+12)
 b) ♔f3 → g4

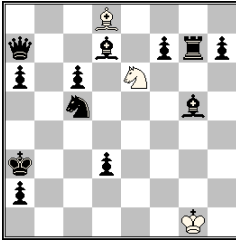
E042



1. ♙d6+ ♙c4 (♔d4?) 2. ♖h1 ♖d4 3. ♙h2 ♙d5+
 1. ♜h6+ ♜d4 (♔c4?) 2. ♖g1 ♖c4 3. ♜h2 ♜e2+

h≠3 (3+12)
 2.1...

E043

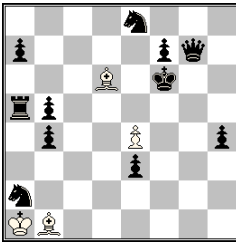


h#3 (3+12)
 b) ♖d3 → d2

- a)
 1. ♖d2+ ♜g5 2. ♜b4 ♞xc5 3. ♜g4 ♜c1+
 b)
 1. ♞b3+ ♞d4 2. c5 ♜f6 3. ♜a4 ♞c2+

With pinnings and unpinnings

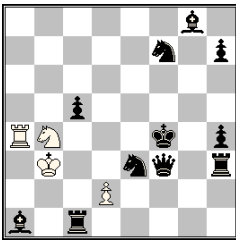
E044



h#3 (4+11)
 See solution

- a) Diagram
 1. ♖e6+ e5 2. f5 ♜c2 3. ♞d7 ♜b3+
 b) ♞e8 → e6
 1. ♞c3+ ♜b2 2. ♞d5 ♜f4 3. ♞e7 e5+
 c) ♞b5 → h3
 1. ♜g5+ ♜e5 2. ♜g4 ♜d3 3. ♞g5 ♜e2+
 d) ♜b1 → f5
 1. ♞c1+ ♜b1 2. ♞d3 ♜c7 3. ♞e5 ♜d8+

E045

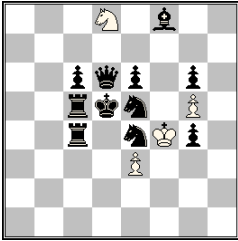


h#3 (4+11)
 b) ♜d2 → h2

- a)
 1. ♞g3 (♞g5+?) ♜a2 **A** (♜a3?) 2. ♞g5+ a ♜a3 **B** 3. ♞f5+ b ♞d3+
 b)
 1. ♜e5 (♞f5+?) ♜a3 **B** (♜a2?) 2. ♞f5+ b ♜a2 **A** 3. ♞g5+ a ♞d5+

Battery checks occur in the second and third moves in each phase
 Successive exposure of W♞ to check at W1& W2
 Paradoxical tempo W1 moves along the checking line
 Exchange of W1-W2 moves
 Exchange of B2-B3 moves
 Self-blocks at B1-B2-B3
 Crosscheck mates
 Model mates

E046

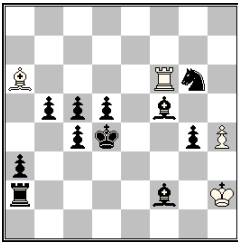


1. ♖d2+ ♔g3 2. ♜e4 ♞xc6 3. ♞d4 ♞b4+
 1. ♞f7+ ♔xg4 2. ♜e5 ♞xe6 3. ♞f6 ♞c7+

Platzwechsel by the two black battery pieces in each solution

h≠3 (4+11)
 2.1...

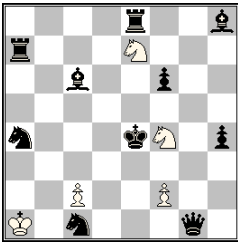
E047



- a)
 1. c3 ♜b6 2. ♔c4 ♜xb5 3. ♞d4+ ♜b2+
 b)
 1. ♔f4 ♞c8 2. ♞e5 ♞xf5 3. ♞e3+ ♞c2+

h≠3 (4+11)
 b) ♔d4 → e5

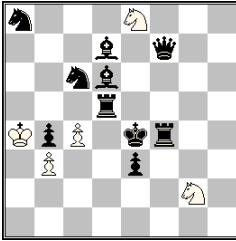
E048



- a)
 1. ♞c5+ ♔b2 2. ♞d3+ cxd3+ 3. ♞d4 ♞xc6+
 b)
 1. ♞d3+ ♔a2 2. f5 ♞eg6 3. ♞d4 cxd3+
 c)
 1. f5+ ♔b1 2. ♞d4 ♞ed5 3. ♜e5 f3+

h≠3 (5+10)
 b) ♞c6 → f3
 c) ♞c2 → g2

E049

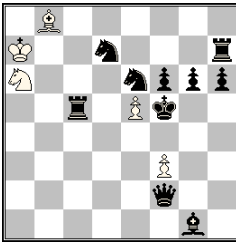


h#3 (5+10)
b) ♖e4 → e6

- a)
 1. ♖e5? ♜e1 2. ♜d4 ♜xd6#? white is in mate
 1. ♜c8? ♜e1 2. ♜d4?? 3. ♖e5 ♜d6#, but White is in zugzwang
 1. ♜d4? ♜e1 2. ♜e5+ ♖a5 3.?? ♜d6#? 4. ♜xd6!
 1. ♜c5! ♜e1 2. ♜d4+ ♖xb4 3. ♖e5+ ♜xd6#
- b)
 1. ♜e7? ♜xe3 2. ♜e5 cxd5#? white is in mate
 1. ♖e7? ♜xe3 2. ♜f7?? 3. ♜e5 cxd5#, but White is in zugzwang
 1. ♜e5? ♜xe3 2. ♜e7+ ♖xb4 3.?? cxd5#? 4. ♜xd5!
 1. ♜c5! ♜xe3 2. ♜e5+ ♖a5 3. ♜e7+ cxd5#

Two cross checks in each solution, zugzwang tries, black Grimshaw, and Zig-Zag (♜d6-c5-e7 and ♜d5-c5-e5)

E050

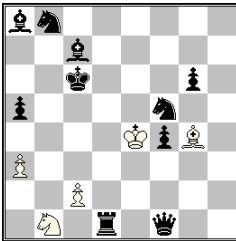


h#3 (5+10)
2.1...

1. ♜xe5+ ♜c5 2. ♜e3 (♜c5?) ♜b3 3. ♜g5 (g5?) ♜d4#
 1. ♜xe5+ ♜c7 2. ♜f7 (♜d7?) ♜d5 3.g5 (♜g5?) ♜e7#

Different battery checks on e5
 Pin and unpin of W♜ and mates on the pin-line (after black interference) by the same knight
 Dual avoidance in B2 and B3 moves
 Self interference of black by the thematic checking pieces
 Line clearances for W♜
 Different self-blocks on g5

E051

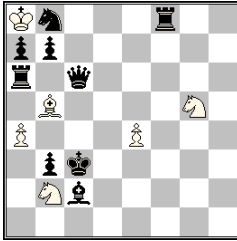


h#3 (5+10)
b) ♜b1 → e3

- a)
 1. ♖a6 ♜xd1 2. ♖b5+ ♖d3 3. ♖a4+ c4#
 b)
 1. ♜d8 ♜xf5 2. ♖d7+ ♖d4 3. ♖c8+ ♜d6#

Black Indian, cross-checks, royal battery, black batteries, white battery, model mates & critical moves
 The black royal batteries fire twice in each phase. The first battery is set in the diagram position, but the second is built during the solution, with long critical moves by the pieces that will become the rear pieces of the subsequent batteries
 Cross-check mates are given by the white batteries that are also created during the solution

E052

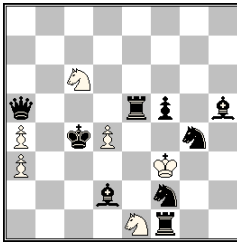


h≠3 (6+9)
2.1...

1. ♖xa4 ♜f3 2. ♜a6+ ♖xa7 3. ♜b4+ ♜xa4#
1. ♜xe4 ♜d3 2. ♜c6+ ♖xb7 3. ♜d4+ ♜xe4#

Fourfold rendering of the theme
Umnov moves
Enabling white king moves by line closings

E053

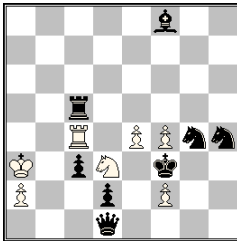


h≠3 (6+9)
b) ♜e1 → b7

- a)
1. ♜e3+ (1 ♜f6+? ♖f4?) ♖f4 2. ♜d5++ (2. ♜ed1+? ♖xe5?) ♖xe5
3. ♜c3+ (3. ♜b4+? ♜c3?) ♜xa5#
b)
1. ♜e4+ (1. ♜d1+? ♖e2?) ♖e2 2. ♜c3++ (2. ♜ef6+? ♖xd2?) ♖xd2
3. ♜d5+ (3. ♜b5+? ♜d5?) ♜bxa5#

6 cross checks, 6 line closures and 4 batteries are created and executed during the solutions. Two 2-direction line closure: in a) the move 2. ♜d5+ closes a5-e5 and allows capture of b♖ (♖xe5) and in b) the move 3. ♜d5+ closes e5-a5 and allows capture of b♖. Similar strategy appears on the line d2-a5

E054

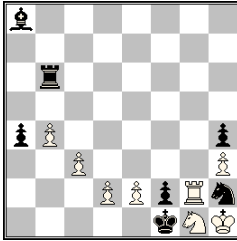


h≠3 (7+8)
2.1...

1. ♜f5+ ♜c5 2. ♖xe4 ♜b4 3. ♜f3 (♜f3?) ♜c4#
1. ♜g5+ ♜c5 2. ♖xf4 ♜b4 3. ♜f3 (♜f3?) ♜d3#

Distant self-blocks on guarded squares (B1)
Umnov on the same squares c5 (W1)
Exchanged roles of WPs (B2)
Unpins on the same square b4 (W2)
Anti-dual self-blocks on the same square f3 (B3)
Switchback
Model mates (W3)
Checks determining pin-unpin strategy

E055

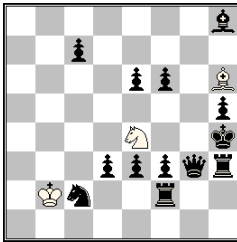


h#3 (8+7)
3.1...

- 1. ♖f3 ♜g5 2. ♘xd2+ ♜d5 3. ♘e4 ♜d1+
- 1. ♜b7 ♜g7 2. ♜xb4+ ♜b7 3. ♜e4 ♜b1+
- 1. ♜c6 ♜g6 2. ♜xc3+ ♜c6 3. ♜f3 ♜c1+

Unpin-Pin-Unpin combination

E056

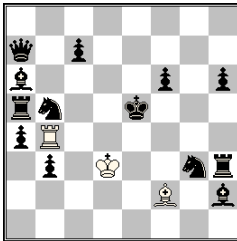


h#3 (3+13)
b) ♔g3 ↔ ♜h5

- a) 1. ♙g7 ♘g5 2. ♜xg5+ ♙xg7 3. ♙g4 ♙f6+
- b) 1. ♜d2 ♙xe3 2. ♘xe3+ ♘xd2 3. ♘g4 ♘xf3+

Zilahi
Exchanged functions of white pieces

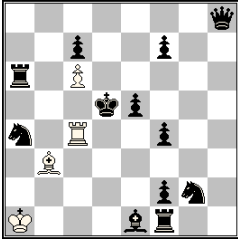
E057



h#3 (3+13)
b) ♜f6 → e6

- a) 1. ♙b7 ♜f4 2. ♘f5+ ♙g3 3. ♙d5 ♜e4+
- b) 1. ♜h4 ♙c5 2. ♘d6+ ♜b5 3. ♜f4 ♙d4+

E058

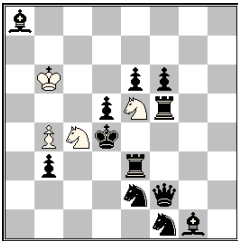


- 1. ♖c5+ ♔b2 2. ♙c3+ ♖xc3 3. ♜xc6 ♜d4‡
- 1. ♙b4+ ♙d1 2. ♘e1 ♙h5 3. ♙d6 ♙xf7‡
- 1. e4+ ♜d4+ 2. ♖e5 ♙xf7 3. ♗f6 ♜d5‡

White and black batteries
 Self-blocks by the first or by both the battery pieces
 Black sacrifices
 Model mates
 Chernous

h‡3 (4+12)
 3.1...

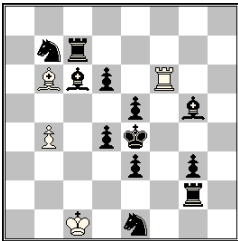
E059



- 1. ♜c3 ♘d3 2. ♙xc4+ ♔a5 3. ♗d4 (♘d4?) ♘b2‡
- 1. ♜e4 ♘b2 2. ♙xe5+ ♔c7 3. ♘d4 (♗d4?) ♘d3‡

h‡3 (4+12)
 2.1...

E060

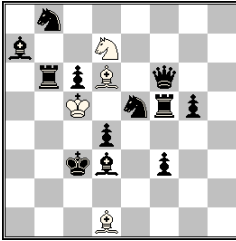


- a) 1. e2+ ♜f4+ 2. ♖e3 ♜xd4 3. ♙f2+ ♜f4‡
- b) 1. ♙b5+ ♙c5 2. ♖c6 ♙xd6 3. ♙b6+ ♙c5‡

In each phase a set battery fires so that Black can replace the firing unit with his ♙, which then moves to fire the battery again

h‡3 (4+12)
 b) ♖e4 → d5

E061

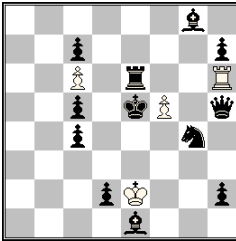


1. ♖c4+ ♙e5 2. ♗d2 ♗xf6 3. ♖xf6 ♙xd4#
 1. ♜b2+ ♗b6 2. ♖d2 ♙xb8 3. ♙xb8 ♗a4#

Decoy

h#3 (4+12)
 2.1...

E062

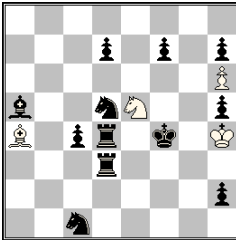


- a)
 1. ♖d6+ ♙f3 2. ♗e5++ ♙e4 3. ♗f7+ ♜xe6#
 b)
 1. ♗h3+ ♙e3 2. ♗g4++ ♙f3 3. ♗f2+ ♜xh5#

Task: only thematic black moves
 Thematic twins

h#3 (4+12)
 b) ♙e5 ↔ ♞g4

E063

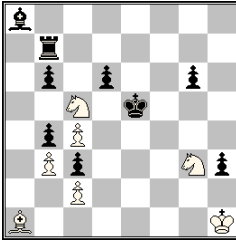


- a) Diagram
 1. ♗f5+ ♗g4 2. ♙g6 ♙xd7 3. f5 ♙e8#
 b) ♗e5 → c5
 1. ♗e3+ ♙g3 2. ♗d2+ ♙f2 3. ♖e4 ♗xe4#
 c) =b) ♜d3 ↔ ♞d5
 1. ♗e5+ ♙g5 2. ♗d6+ ♙f6 3. ♙c7 ♗b7#
 d) =c) ♙a5 → g1
 1. ♗f3+ ♗e4 2. ♗g2 ♙d1 3. ♙h1 ♙f3#

h#3 (4+12)
 See solution

Helpmate of the future with 2 connected pairs of solutions **a+d/b+c**

E064



h#3 (7+9)

b) ♖d6 → f4

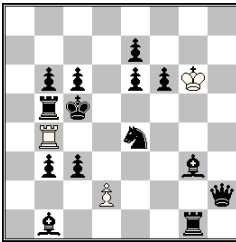
a)

1. ♜f7+ ♗ge4 (♗e2?) 2. ♞f3! (♞f5?) ♗xc3 3. ♜f5+ ♗d5# (♗e2??)

b)

1. ♜c7+ (♜e7+?) ♗ce4 (♗a4?) 2. ♞c6 ♗xc3 3. ♜e6+ ♗ce4# (♗b5??)

E065



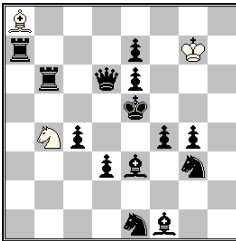
h#3 (3+14)

2.1...

1. ♗d6+ ♖g7 2. ♗e4 ♜a4 3. ♗d5 d4#

1. ♗d6+ ♖f7 2. ♞g5 d3 3. ♞d5 ♜c4#

E066



h#3 (3+14)

b) ♖e6 → c5

a)

1. ♞d4 ♗d5 2. ♗e4+ ♖g6 3. e5+ ♗f6#

b)

1. ♗d4 ♗c6+ 2. ♗d5+ ♖f7 3. e5+ ♗e7#

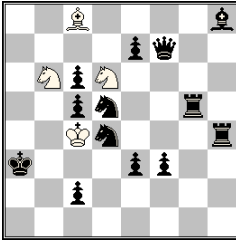
Black & White battery creation

Two pairs of self-blocks on d4&e5

Cross-check

2 pairs of thematic moves

E067

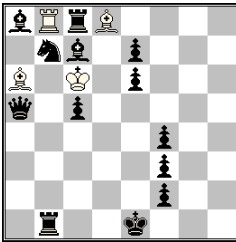


h#3 (4+13)
 b) ♖d6 → c1

- a)
 1. ♗f6+ (1... ♘5~+?) ♙c3 2. ♚a2 ♜g4 (♜~?) 3. ♘b3 ♘dc4#
 b)
 1. ♗f5+ (1... ♘4~+?) ♙xc5 2. ♚a4 ♜e6 (♜~?) 3. ♘b4 ♘c4#

First black moves show theme + "anti-theme" - anticipatory battery destruction in order to avoid cross-check in the last move
 Critical black moves
 Anticipatory line closures in W2

E068

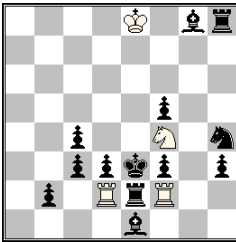


h#3 (4+13)
 2.1...

1. ♗d6+ ♙d7 2. ♚d1 ♜b1 3. ♜b8 ♜xa5#
 1. ♜d6+ ♙d7 2. ♚d2 ♜a5 3. ♘d8 ♜xb1#

Exchange of functions between the following piece pairs:
 B♙ and B♜b1, B♘ and B♜c7, W♚ and W♜d8
 Umnov moves
 Pin mates

E069

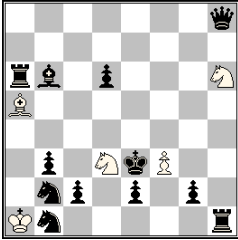


h#3 (4+13)
 3.1...

1. ♚xd2+ ♘xe2 2. ♙c2 ♜f1 3. ♜d2 ♘d4#
 1. ♙xf2+ ♜xe2+ 2. ♙f1 ♜h2 3.f2 ♜h1#
 1. ♙xf4+ ♜fxe2 2. ♙g3 ♜e5 3.f4 ♜g5#

Cyclic Zilahi, line opening, black-black FML, no white pawns

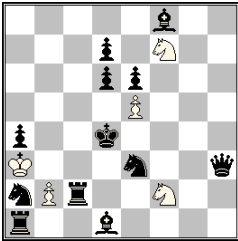
E070



h#3 (5+12)
 b) ♖b1 → e1

- a)
 1. ♖a3+ ♜e1 (♜e5?) 2. ♜d3+ ♙c3 3. ♜f4 ♜g4#
 b)
 1. ♜a4+ ♜e5 2. ♜d3+ ♙e1 (♙c3?) 3. ♜f4 ♜f5#

E071

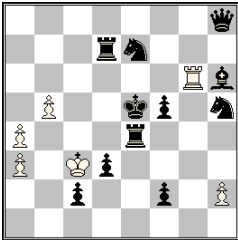


h#3 (5+12)
 3.1...

1. ♖c5 exd6 2. ♜c3+ ♙b4 3. ♙d5 bxc3#
 1. dxe5+ b4 2. d5 ♜d6 3. ♖c4 ♜b5#
 1. ♜f5+ b3 2. ♙c3 ♜g5 3. ♜d4 ♜ge4#

Model mates

E072

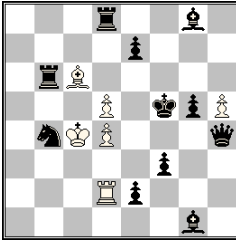


h#3 (6+11)
 2.1...

1. ♜f4+ ♙d2 (1... ♖g7?) 2. ♜f3+ ♙g5 3. ♜f4 ♖g3#
 1. ♜d5+ ♙xd3 (1... ♖f6?) 2. ♜c5+ ♙d6 3. ♜d5 ♖c6#

Black-black Umnov on f4/d5

E073

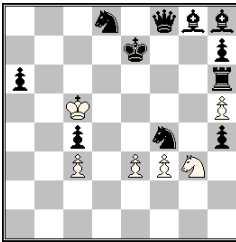


1. ♖xd5 ♜d3 2. ♗f6+ ♙d5 3. ♗g4 ♜xf3+
 1. ♙xd4 ♙e8 2. ♙f6+ ♜d4 3. e5 ♙g6+

Black batteries are set up through the capture of pinned pawns occupying squares needed for white guard-pieces; each black capturing unit later makes a line-closing selfblock

h#3 (6+11)
 2.1...

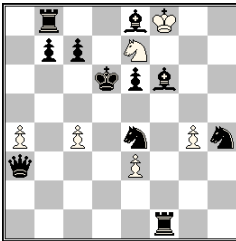
E074



- a)
 1. ♜f6+ ♙d4 2. ♜g5+ ♙e4 3. ♙f6 exf4+
 b)
 1. ♜e6+ ♙b6 2. ♜d5+ ♙c7 3. ♙e6 e4+
 c)
 1. ♜f7+ ♙xc4 2. ♜g7+ ♙d4 3. ♗f7 ♗f5+

h#3 (6+11)
 b) ♙f3 → d4
 c) ♙f3 → g5

E075

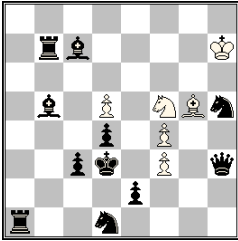


1. ♙d4+ ♗f5+ 2. ♜e5+ ♙g7 3. ♜f4 exd4+
 1. ♙b5+ ♗c8+ 2. ♜c6+ ♙e8 3. ♗c5 axb5+

2x2 thematic moves

h#3 (6+11)
 2.1...

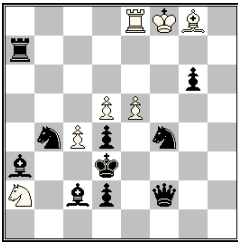
E076



- a)
 1. ♖xf4+ ♜h4 2. ♜h5 ♜g2 3. ♙c4 ♜e1#
 1. ♙xf4+? ♜e7 2. ♙c7 ♜c6 3. ♙c4 ♜b4 4. ♖xb4
- b)
 1. ♙xf4+ ♜e7 2. ♙c7 ♜c6 3. ♜c3 ♜b4#
 1. ♜xf4+? ♜h4 2. ♜h5 ♜g2 3. ♜c3 ♜e1 4. ♖xe1

h#3 (6+11)
 b) ♜c3 → c4

E077

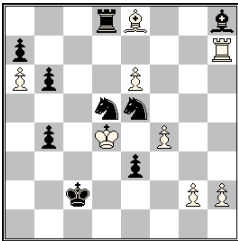


- a)
 1. ♜bxd5+ (1. ♜fxd5+?) ♖e7 2. ♙d6 exd6 3. ♜c3 ♜b4#
- b)
 1. ♜fxd5+ (1. ♜bxd5+?) ♙f7 2. ♖f6 exf6 3. ♜c3 ♜f4#

Delayed Umnov
 Dual avoidance

h#3 (7+10)
 b) ♜a2 → e2

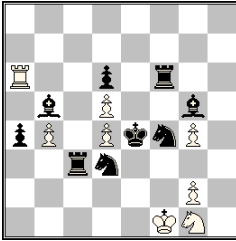
E078



- a)
 1. ♜f6+ ♜xe5 2. ♖d2 ♖c7+ 3. ♜d3 ♙b5#
- b)
 1. ♜d7+ ♜xd5 2. ♙b2 ♙g6+ 3. ♜c3 ♖h3#

h#3 (8+9)
 b) ♜e3 → d2

E079

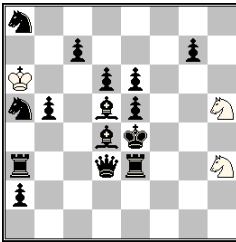


h#3 (8+9)
2.1...

1. ♖xb4+ ♗e2 (1... ♗f3??, 1... ♖xa4??) 2. ♖e3 ♖xa4 3. ♗bd3 ♗c3#
1. ♗xd5+ ♗f3 (1... ♗e2??, 1... ♖xd6??) 2. ♗e3 ♖xd6 3. ♗5f4 ♗g5#

Self-pin after battery check and unpin of the self-pinned W ♗ by B ♗ switchback after allowing a black line piece to pass across the switchback square (Klasinc theme) in order to self-block e3, annihilation of W ♗b4 or W ♗d5 by the respective B ♗, ambush by W ♖, mates on a square vacated by a black piece at B2 move (delayed Umnov effect)

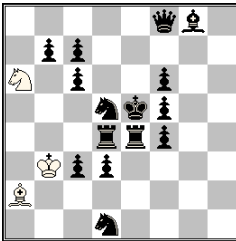
E080



h#3 (3+15)
2.1...

1. ♗c4+ ♖xb5 2. ♗d2+ ♖b4 3. ♗f3 ♗g3#
1. ♗c6+ ♖b7 2. ♗e7+ ♖b8 3. ♗f5 ♗g5#

E081

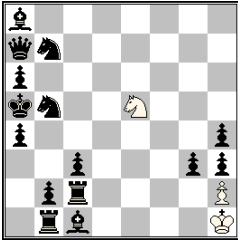


h#3 (3+15)
b) ♖d4 → d6

- a)
1. ♗e7+ ♖a3 2. ♗c8+ ♗c5 3. ♗d6 ♗d7#
b)
1. ♗b4+ ♖a4 2. ♗c2+ ♗b4 3. ♗d4 ♗xd3#

Two thematic battery checks in each phase
The white Knight is pinned and unpinned in the course of the play

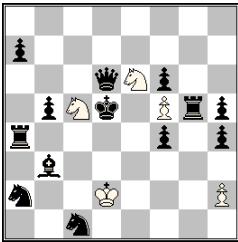
E082



- a)
1. ♖c5+ ♔g1 **2. ♜d3+** ♔f1 **3. ♜b4** ♜c4#
 b)
1. ♜d2+ ♔xh2 **2. ♜e3+** ♔xh3 **3. ♜b6** ♜c6#
 2x2 thematic moves

h#3 (3+15)
 b) ♜g3 → h2

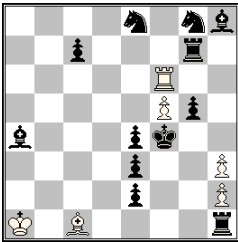
E083



- 1. ♖c4+** ♜d4 **2. ♖b4** ♜d3+ **3. ♖a3** ♜xb5#
1. ♖e5+ ♜d3+ **2. ♖xf5** ♜d4+ **3. ♖g4** ♜f2#
1. ♖xf5 ♜xf4+ **2. ♖e5+** ♔e3 **3. ♜d5** ♜g6#
1. ♖b4 ♜xb3 **2. ♖c4+** ♔c2 **3. ♖d5** ♜a5#
 3-move HOTF with 4 thematic solutions

h#3 (5+13)
 4.1...

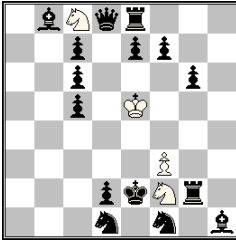
E084



- 1.e1** ♜ ♜d2 **2. ♜f3+** ♜e1 **3. ♜d1** ♜g3#
1.e1 ♜ ♜b6 **2. ♜e7+** ♜b2 **3. ♜e5** ♜f2#
 Minor promotions

h#3 (6+12)
 2.1...

E085

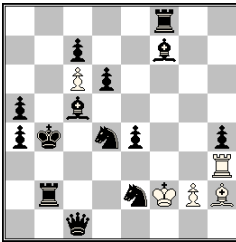


- a)
 1. ♖e1 ♞d6 **2.exd6+** ♜f4 3. ♚e2 ♞d3#
 b)
 1. ♖g1 ♞b6 **2.cxb6+** ♜e4 3. ♙h2 ♞h3#

Sacrifices of the W ♞c8, bicolor line opening and model mates

h#3 (4+15)
 b) ♜e2 → h2

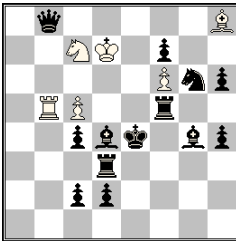
E086



- a)
 1. ♙a2+ ♙f4 **2.♞f5+** ♙e3 3. ♚a3 ♙xc5#
 b)
 1. ♞xc6+ ♚e3 **2.♞ed4+** ♚e2 3. ♚b5 ♚xb2#

h#3 (5+14)
 b) ♙h2 → f1

E087

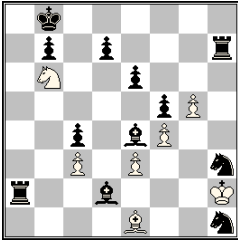


- 1.♙xf6+** ♞d5 2. ♚d4 ♞xf6 **3.♚c3+** ♞d5#
1. ♚xc5+ ♞e6 2. ♚f5 ♞xc5 **3. ♚g5+** ♞e6#

Creation of white and black batteries
 Play of two black batteries and a white one in each of the solutions
 Switchback of the W ♞
 Diagonal-orthogonal echoed play

h#3 (6+13)
 2.1...

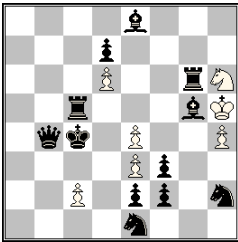
E088



h#3 (7+12)
3.1...

- 1. ♖xg5+ ♜h4 2. ♗h3 ♜e7 3. ♜a7 ♜d6#
- 1. ♜xc3+ ♜d2 2. ♜b2 ♜b4 3. ♜a7 ♜d6#
- 1. ♜xe3+ ♜f2 2. ♜d2 ♜c5 3. ♜a7 ♜d6#

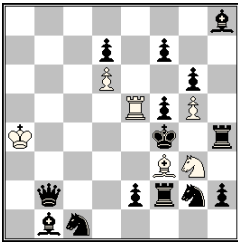
E089



h#3 (7+12)
b) ♔c4 → f1

- a) 1. ♜xd6+ ♗f7 2. ♜f6+ ♔h6 3. ♜c3+ ♗xd6#
- b) 1. ♜xe3+ ♗f5 2. ♜g5+ ♔h6 3. ♜g1+ ♗xe3#

E090

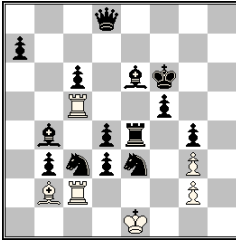


h#3 (6+14)
3.1...

- 1. ♔xf3+ ♜e4 2. ♔e5 ♗f1 3. ♔g3 ♗d2#
- 1. ♔xg3+ ♜e4 2. ♜ff4 ♜xf5 3. ♜fg4 ♜f3#
- 1. ♔xe5+ ♗e4 2. ♔e6 ♜xe2 3. ♜e5 ♜c4#

Cyclic interchange of functions involving three white pieces
Cyclic Zilahi
Three white pieces playing to the same square e4

E091

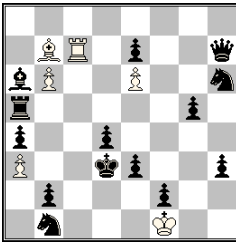


- a)
 1. ♖ed5+ ♜e2 2. ♙e5 ♜c1 3. ♚f6 ♜f4#
 b)
 1. ♖b5+ ♜c3 2. ♙a5 ♜c1 3. ♚b6 ♜a1#

Two anticipatory self-pins and double pinmate in each solution
 Model mates
 White moves to the same square c1

h#3 (6+14)
 b) ♚f6 → b6

E092

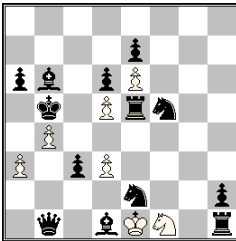


- a)
 1. ♜b5 ♜c6 2. ♙c3 ♙e2 3. ♚b3+ ♜b5#
 b)
 1. ♜b5 ♜c6 2. ♙e4 ♙xg5 3. ♜d3+ ♜c5#

White and black Grimshaw

h#3 (6+14)
 b) ♙f1 → h5

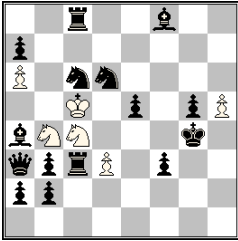
E093



1. ♖g1+ ♜e3 2. ♜e2+ ♜d1 3. ♚a2 ♜xc3#
 1. ♜e3 ♙f2 2. ♜c4+ ♜e3 3. ♜a4 dxc4#

h#3 (7+13)
 2.1...

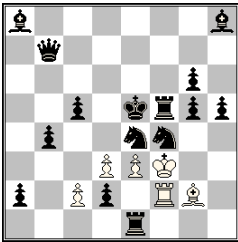
E094



h≠3 (6+15)
b) ♖c8 → g3

- a)
1. ♖e7+ ♕xd6 2. ♖c5 ♖d5 A 3. ♕f5 ♖ce3# B
b)
1. ♖b5+ ♕xc6 2. ♖c5 ♖e3+ B 3. ♕f4 ♖bd5# A

E095

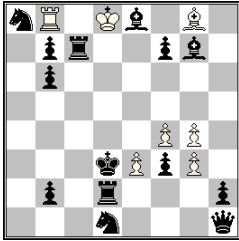


h≠3 (6+15)
See solution

- a) Diagram
1. ♖d6+ ♕g3 2. ♖e6 ♖f3 3. ♕d5 ♖xf5#
b) ♜c5 → h4
1. ♖f6 ♖h3 2. ♖d5+ ♕g2 3. ♖d6 d4#
c) =b) ♕b7 → b2
1. ♖xf2+ ♕xf2 2. ♖f3 d4+ 3. ♕e4 ♖xf3#
d) =c) ♜d2 → d4
1. h3 ♖e2 2. ♖d6+ ♕g3 3. ♖f6 exf4#
e) =d) ♜d3 → h3
1. ♖xg2+ ♕xg2 2. ♖f3 exd4+ 3. ♕f4 ♖xf3#
f) =e) ♜c2 → c5
1. ♕b3 ♖d2 2. ♖f6+ ♕f2 3. ♕e6 exd4#

B ♖e4, ♖f4 unguard g3/g2/f2: W ♕ arrives on those squares in solutions a+d/b+e/c+f. W ♖f2 - WPe3/W ♖g2 - WPd3 change their role (guarding-mating) in solutions e+f/b+c, White battery and double check in solutions a+d

E096

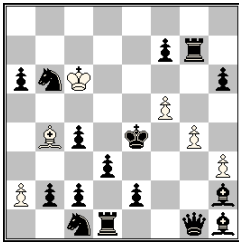


h#3 (7+14)
 2.1...
 b) ♖b8 → f3

- a)
 1. ♖c2+ ♕xe8 2. ♖b1 ♖h7+ 3. ♖a1 ♖xa8#
 1.f6 ♖xa8 2. ♖e4+ ♕xc7 3. ♖d3 ♖xe8#
- b)
 1. ♖e7 e4+ 2. ♖xe4+ ♖d3 3. ♖f6 ♖h7#
 1. ♖f1 ♖h7+ 2. ♖e2+ ♖d3+ 3. ♖e1 ♖xf1#

Four thematic checks by B♖. In a) W♖ escapes, in b) W♖/♖ interfere on B♖'s initial square d3
 Pickabish on f6

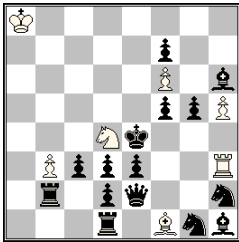
E097



h#3 (6+16)
 See solution

- a) Diagram
 1. ♖e5+ ♕c7 2. ♖f6+ ♕d8 3. ♖e5 ♖e7#
- b) ♖b4 → c3
 1. ♖f4+ ♕d6 2. ♖g5+ ♕e7 3. ♖f4 ♖f6#
- c) ♖b4 → f6
 1. ♖e3+ ♕c5 2. ♖d2+ ♕b4 3. ♖e3 ♖c3#
- d) ♖b4 → e7
 1. ♖d4+ ♕xb6 2. ♖c3+ ♕a5 3. ♖d4 ♖b4#

E098

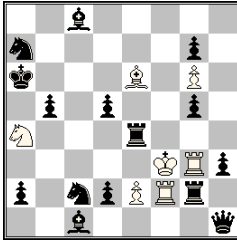


h#3 (7+15)
 b) ♖e2 → h7
 c) ♖b2 → f4

- a)
 1. ♖xh5 ♖xf5 **A** 2. ♖xf5+ ♖f3+ 3. ♖g6 ♖xd3# **B**
- b)
 1.c2 ♖xd3+ **B** 2. ♖xd3+ ♖c6 3. ♖c3 ♖xe3# **C**
- c)
 1. ♖f2 ♖xe3+ **C** 2. ♖xe3+ ♖g2 3.f4 ♖f5# **A**

Active cyclic Zilahi
 Cyclic interchange of functions between three white pieces
 (♖d4, ♖f1, ♖h3)
 Cycle of W1/W3 moves
 Distant self-blocks

E099

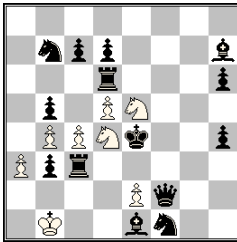


1. ♖xf2++ ♗xf2 2. ♖xe6 ♖a3 3. ♖b6 ♗c5#
 1. ♖xg3++ ♗xg3 2. ♖xa4 ♖f6 3. ♖a5 ♗xc8#

Double Zilahi
 Double check to white king
 Double check on mating move

h#3 (7+15)
 2.1...

E100

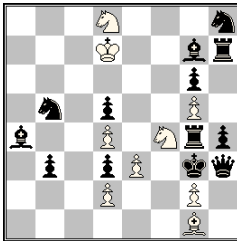


1. ♖e3+ ♗c2+ 2. ♖xe2 ♗c1 3. ♖e3 ♗d4#
 1. ♖xd4+ ♗d3 2. ♖xc4 e4 3. ♖d4 ♗b2#
 1. ♖xe5+ e4 2. ♖g6 ♗c6+ 3. ♖d6 e5#

Cyclic Zilahi
 The variety of pins and unpins

h#3 (8+14)
 3.1...

E101

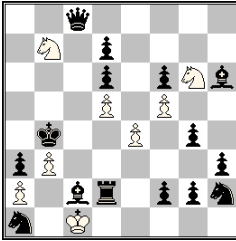


- a)
 1. ♗xd4+ ♗f7 2. ♗g7 ♗d6 3.d4 ♗e4#
 b)
 1. ♖xg5+ ♗de6 2. ♖g4 ♗xd4 3.g5 ♗f5#
 c)
 1. ♗xd4+ ♗c6 2. ♗b5 ♗d4 3.d2 ♗de2#

Three battery checks, triple self-pin of the W ♗d8 and three unpinning switchbacks

h#3 (9+13)
 b) ♗d4
 c) ♗d2 → e5

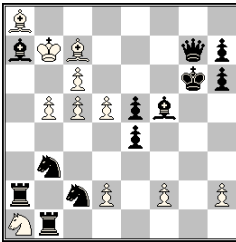
E102



h#3 (8+15)
 b) ♔b4 → g3

- a)
 1. ♖xd5+ ♜f4 2. ♙d3+ ♚d1 3. ♙b5+ ♜xd5#
 b)
 1. ♙xe4+ ♜c5 2. ♖d3+ ♚b1 3. ♖f3+ ♜xe4#

E103

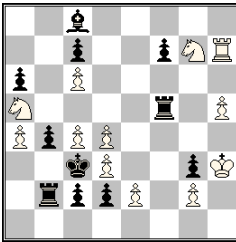


h#3 (11+12)
 b) ♔g6 → a3
 c) ♔b7 → g2

- a)
 1. ♔f7 ♙d6 2. ♔e8+ c7 3. ♔d7 c8♚#
 b)
 1. ♜c1 ♚a6 2. ♔b2+ ♙a5 3. ♜a3 ♙c3#
 c)
 1. h5 ♙xe5 2. ♔h6+ ♙g3 3. ♙g6 ♙f4#

Three times a black battery with B♜ as front piece gives check

E104



h#3 (12+11)
 2.1...

1. ♖c5+ ♜f5 (♜e6?) 2. ♖xc4 ♜h6 3. ♖xc6 ♜xc6#
 1. ♖f3+ ♜e6 (♜f5?) 2. ♖xd3 ♜xf7 3. ♖f3 ♜xf3#