



**WORLD FEDERATION
FOR CHESS COMPOSITION**

**10th WORLD CHESS COMPOSITION
TOURNAMENT 2016-2017**

ENTRIES
SECTION B: THREEMOVERS

July 2016

Judging countries

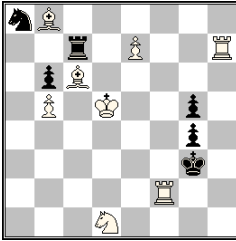
Belarus, Croatia, India, Sweden, Switzerland
(France as reserve)

Theme

In a directmate in 3 moves in the same variation the black defensive motive and the white response are of the same tactical nature. For example, if Black is making a square evacuation defence then White is making a square evacuation on second move. Black unpin is replied by white unpin, black flight provision (unblock, capture or interference) is replied by a flight provision on W2 move.

Purely geometrical unity (like in magnet or monkey theme) is not considered thematic. Zugzwang problems are not thematic for this section. It is allowed to have different tactical motives in different variations.

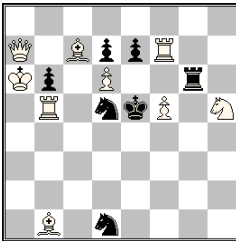
B001



±3 (8+6)

1. ♖d6! [2. ♖g2+ ♕f4 3. ♖f7#]
 1... ♖xc6+ 2. ♗xc6+ ♜c7 3. ♗xc7#
 1... ♖d7+ 2. ♗xd7+ ♜c7 3. ♗xc7#
 1... ♖xe7 2. ♗xe7+ ♜c7 3. ♗xc7#

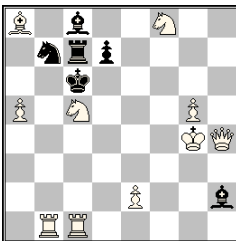
B002



±3 (9+7)

- 1... ♖xd6 2. ♗xb6 (selfpin) [3. ♖xe7+] e6 3. ♗xd6#
 1... exd6 2. ♗xb6 [3. ♗d4#] ♖g4 3. ♖e7#
 1. ♗xb6! [2. ♗d4+ ♕xd6 3. ♗c5#]
 1... ♖xd6 2. ♗b8 (pin) [3. ♖xe7+] e6 3. ♗h8#
 1... ♕xd6 2. ♗b8+ ♜c7+ (check) 3. ♗xc7#
 2... ♕c6 3. ♖c5#
 1... ♖g4 2. ♖xe7+ ♕xd6 3. ♗xd7#

B003

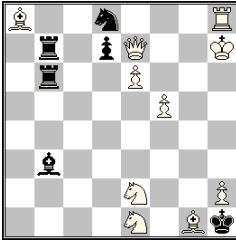


±3 (10+6)

1. ♗h7? [2. ♖b6+ ♕d5 a 3. ♗e4# P]
 1... d6+ 2. ♜cd7+ B ♕d5 a 3. ♗d3# Q
 1... d5+ 2. ♜ce6+ A ♕d6 b 3. ♗xc7# R
 but 1... ♕d6!
 1. ♗h8! [2. ♖b6+ ♕d5 a 3.e4# X]
 1... d6+ 2. ♜ce6+ A ♕d5 a 3. ♗d4# Y
 1... d5+ 2. ♜cd7+ B ♕d6 b 3. ♗f6# Z
 1... ♕d6 2. ♗f6+ ♕d5 3.e4#

Black battery check vs. White battery check
 Reciprocal change of W2 moves (for 1...d5/d6) after the try & key
 4 different mates after 2... ♕d5
 Changed mates after 2... ♕d5/♕d6 in the try-play and post-key play

B004

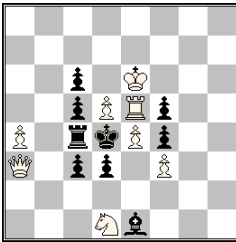


- 1.♗d4! [2.♘g3+ ♖xh2 3.♖h4♠]
 1...d6 2.♖g6 [3.♘g3♠]
 1...d5 2.♗g8 [3.♘g3♠]
 1...dxe6 2.♗g7 [3.♘g3♠]

Rook line opening

♠3 (10+6)

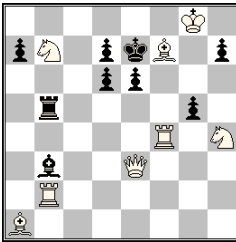
B005



- 1...fxe4 2.♖xe4♠ A
 1...cxd5 2.♖xd5♠ B
 1.exf5? x [2.♖e4♠] A
 1...cxd5 2.♖xd5♠ B
 1...d2 a 2.dxc6 y [3.♖d5♠] B, 2...♖b4 b 3.♖xc3♠
 but 2...♗d3!
 1.dxc6! y [2.♖d5♠] B
 1...♖b4 b 2.exf5 x [3.♖e4♠] A ♗c4 3.♖e4♠
 2...d2 a 3.♖xc3♠
 2...c4 3.♖d5♠ B

♠3 (8+9)

B006

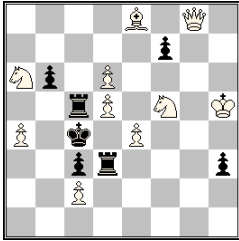


- 1.♖h2? [2.♗f6♠]
 1...e5 2.♗f5+ ♖f6 3.♖h6♠
 but 1...gxf4!
 1.♖bf2! [2.♗f6♠]
 1...♖e5 2.♖f5 [3.♖xg5♠]
 2...♖xf5 3.♗xf5♠, 2...h6 3.♗g6♠, 2...♖xe3 3.♗f6♠
 1...e5 2.♖c4 [3.♖xg5♠]
 2...e4 3.♗f6♠, 2...h6 3.♗g6♠
 1...gxf4 2.♖xf4 [♖xd6♠/♖f6♠/3.♗f6♠]
 2...♖g5+ 3.♖xg5♠

♠3 (8+9)

Line-closings vs. line-closings combined with line-openings

B007

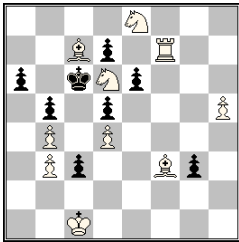


≠3 (10+7)

- 1. ♖g7! [2. ♗d4+ ♜xd4 3. ♘e3#]
- 1... ♜xd5 2. ♙xf7 [3. ♗d4#]
- 1... ♜xd5 2. ♗xf7 [3. ♙b5#]
- 1... ♗f6 2. ♗c7 [3. ♙b5#] ♜c6 3. ♗xc6#

Pinnings

B008



≠3 (10+8)

- 1. ♙e2? [2. ♜f3 [3. ♜xc3#]]
- 1... e5 2. ♙g4 [3. ♙xd7#]
- but 1... g2!

- 1. ♙g4? [2. ♜f3 [3. ♜xc3#]]
- 1... a5 2. ♙e2 [3. ♙xb5#]
- but 1... g2!

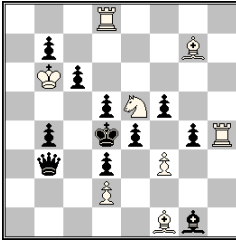
- 1. ♙d1? [2. ♜f3 [3. ♜xc3#]]
- 1... a5 2. ♙e2 [3. ♙xb5#]
- 1... e5 2. ♙g4 [3. ♙xd7#]
- but 1... c2!

- 1. ♙g2! [2. ♜f3 [3. ♜xc3#]]
- 1... a5 2. ♙f1 [3. ♙xb5#]
- 1... e5 2. ♙h3 [3. ♙xd7#]

Anticipatory guard of the mate square vs. Anticipatory guard of the mate square (or sequential approaching the mate square vs. sequential approaching the mate square)

2 thematic phases with changed play, quiet second moves
 Reciprocal exchange of 1st and 2nd move (1. ♙g4? and 1. ♙e2?)
 14 moves of W ♙ - task!

B009

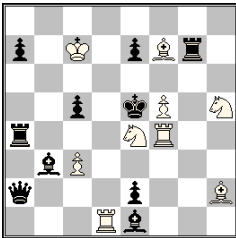


±3 (8+11)

- 1. ♖c8!** [2. ♗xc6+ ♔c4+ 3. ♘d4#]
 1... ♕a4 2. ♘d3+ ♔c4+ 3. ♘c5#
 1... exf3 2. ♘g4+ ♔c4+ 3. ♘e3#
2... ♔e4+ 3. ♘f2#

Black ♔/♕ battery play with checks at B2 moves is met by the same effect of battery play at W3 moves. Triple white battery creation at W2 moves, triple play by the white Siers battery at W2 and W3 moves and triple change of mate after 2... ♔c4

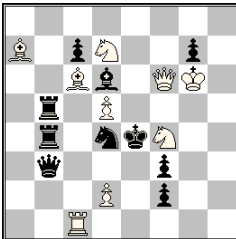
B010



±3 (9+10)

- 1. ♘ef6?** [2. ♘d7#]
 1... exd1 ♕/♖d2 2. ♖e4+ ♔xf5 3. ♖e5#
 1... exf6 2. ♖c4+ ~ 3. ♖d5#
 but 1... ♖xf4!
1. ♘d6! [2. ♖e4#]
1... ♖g3 2. ♖c4!
1... ♖g3 2.c4!
 1... exd6 2. ♖c4+!

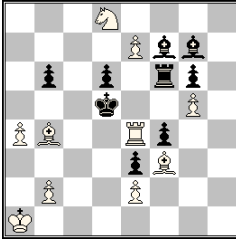
B011



±3 (9+10)

- 1. ♔g5!** [2. ♖g6+ ♗f5 3. ♖xf5#]
 1... ♖xd5+ 2. ♖f5+ ♗xf5 3. d3#
 1... ♖xd5+ 2. ♖e5+ ♗xe5 3. ♖c5#
 Checks with selfpins
 1... gxf6+ 2. ♘xf6+ ♔e5 3. ♗g6#
 1... ♖xf4+ 2. ♖xf4+ ♔d3 3. ♖e3#
 Checks with captures

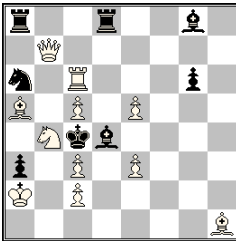
B012



±3 (10+9)

1.b3! [2. ♖e6+ ♔d4 3. ♘c6#]
1... ♜e6+ 2. ♜d4+ ♔xd4 3. ♘c6#, 2... ♔e5 3. ♜d5#
1... ♜f5+ 2. ♜e5+ ♔d4 3. ♘c6#, 2... ♔e5 3. ♘c3#
1... ♘e8 2. ♘c3 [3. ♜c4# / ♜e5#]

B013

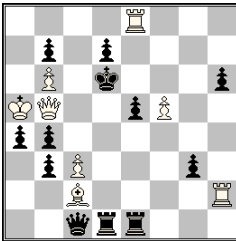


±3 (11+8)

1... ♔xc3+ 2. ♘d5+ ♔xc2 3. ♖b1#, 2... ♔c4 3. ♖b3#
1. ♙e4! [2. ♙d3+ ♔xc3+ 3. ♘d5#]
1... ♙xe3 2. ♘d5 [3. ♘xe3#, ♖b3#] ♜b8 3. ♘e3#, 2... ♘b4+ 3. ♖xb4#
1... ♙xe5 2. ♘d3 [3. ♘xe5#, ♖b3#] ♜b8 3. ♘e5#, 2... ♘b4+ 3. ♖xb4#
1... ♙xc5 2. ♘xa6 [3. ♜xc5#, ♖b3#, ♖b4#] ♜b8 3. ♜xc5#
 1... ♙xc3 2. ♙d3+ ♜xd3 3. cxd3#

Line opening by Black and White
 Bishop star in B1

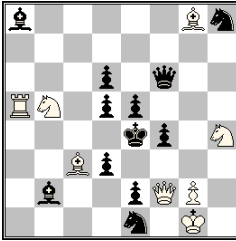
B014



±3 (8+12)

1.c4! [2. ♖xb4+ ♔c6 3. ♜c8#]
1... ♖e3 2. ♙e4 [3. ♖xe5#] ♖xe4 3. ♜xh6#
 2... ♜d5 3. ♖xd5#
 2... ♖xb6+ 3. ♖xb6#
 2... ♖c5 / ♖d4 / ♖c3 3. ♜xh6#
1... ♖d2 2. ♙d3 [3. ♖d5#] ♖xd3 / ♖g2 3. ♜xh6#

B015

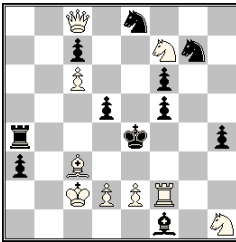


♯3 (8+12)

1. ♖d2! [2. ♖f3+ C ♗xf3+ 3.gxf3♯ D]
 1... ♗d4 2. ♖a4 [3. ♗c3♯ A] ♗f3+ 3.gxf3♯ D (3. ♖xf3+?? C)
 2... ♖xh4 3. ♗xd6♯ B
 1... ♖g6 2. ♗h7 [3. ♗xd6♯ B] ♗f3+ 3. ♖xf3♯ C (3.gxf3+?? D)
 2... ♗a3 3. ♗c3♯ A
 2... ♗f7 3. ♗xg6♯

Pinning vs. pinning

B016

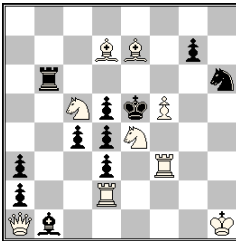


♯3 (9+11)

1. ♖d7! [2. ♖e7+ ♗e6 3. ♖xe6♯]
 1... d4 2.d3+ ♗e3 3. ♗d2♯
 1... f4 2. ♖xf1 [3. ♗f2♯] ♗e6 3. ♖xe6♯
 2... f3 3. ♖g4♯

Square vacations

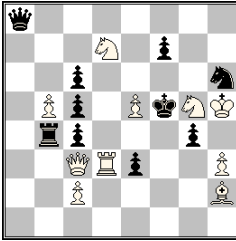
B017



♯3 (9+11)

- 1... ♗xf5 2. ♖xf5X, 1... ♖b~ 2. ♗d6X.
 1. ♗f2? [2. ♖e3+ ♗f4 3. ♖xd4♯]
 1... ♖b2 2. ♗b5, 1... ♖e6 2. ♗xe6, 1...c3 2. ♖c2
 but 1... ♖f6!
 1. ♗d6? [2. ♖e3+ ♗f4 3. ♖xd4♯]
 but 1...c3!
 1. ♗g5! [2. ♖e3+ ♗f4 3. ♖xd4♯]
 1... ♖b2 2. ♗b5 [3. ♗d7♯]
 1... ♖f6 2. ♗e6 [3. ♗d7♯] (1... ♖e6 2. ♗xe6)
 1...c3 2. ♖c2 [3. ♗xd3♯] ♗xc2 3. ♖e1♯

B018



±3 (10+10)

1...cxd3 2. ♖xd3+ ♜e4 3. ♖xe4±

1. ♖e1? [2. ♖f1±]

1...cxd3 2. ♖f1+ ♜f4 3. ♖xf4±

but 1... ♖a1! a, cxb5! b

1. ♜d1! [2. ♜f1±]

1... ♖a1 a 2. ♜d6 [3. ♜f6±] ♜g8 3.hxg4± (direct attack on thematic squares)

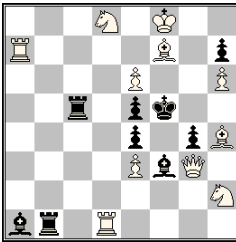
1...cxb5 b 2.e6 [3. ♖e5±/♖f6±] ♖a1 3. ♜d5±, 2... ♖h8 3. ♜f1± (line openings)

1...e2 2.hxg4+ ♜xg4 3. ♖f3±

1... ♜b1 2. ♖xe3 cxb5 3. ♖f4±

Two refutations of a try show up as thematic defences in solution

B019



±3 (11+9)

1... ♜c3 2. ♖f4+ exf4 3. ♜d5±

1. ♜h5? [2. ♜f7±]

1... ♜c7 2. ♜d5 [3. ♖f4±] ♜f7+ 3. ♜xf7±

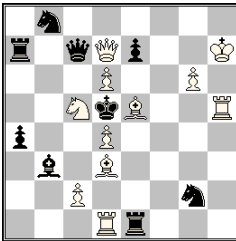
but 1... ♜b7! (2. ♜f1?! [3. ♖xg4±] ♜f7+ 3. ♜xf7±, but 2... ♜g7!)

1. ♜g7! [2. ♜g6+ hxg6 3. ♜f7±]

1... ♜b7 2. ♜f1 [3. ♖xg4±] ♜xf7+ 3. ♜xf7±

1... ♜c7 2. ♜d5 [3. ♖f4±] ♜xf7+ 3. ♜xf7±

B020



±3 (11+9)

1. ♖b5! [2.c4+ ♜xc4 3. ♜xc4±]

1...e6+ 2. ♜d7+ ♖c5 3. ♖xc5±

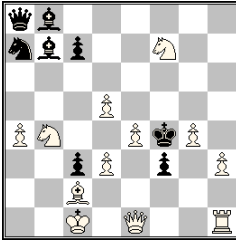
1...exd6+ 2. ♜g7+ ♜e5 3. ♜e4±

1... ♜xe5 2. ♜e4+ ♜xd6 3.dxe5±

1... ♖xc5 2. ♖xc5+ ♜e6 3. ♜f5±

Battery check vs. battery check

B021

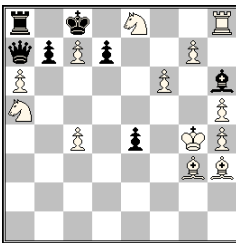


±3 (12+8)

- 1. ♖g1! [2. ♖b1 [3. ♖c1#] f2 3. ♖xf2#]
- 1... ♖b5 2.d4 [3. ♖d3#] f2 3. ♖xf2#
- 1... ♖c6 2.e5 [3. ♖e4#]
- 1... ♖c8 2.g5 [3. ♖g4#] f2 3. ♖xf2#
- 1... ♖xd5 2.exd5 [3. ♖e4#/♖e5#] ♖xd5 3. ♖xd5#

3 times square vacation

B022

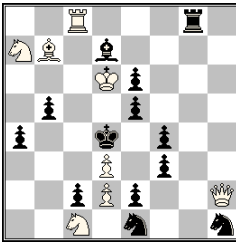


±3 (13+7)

- 1.c5! [2. ♖d6+ ♖xc7 3. ♖b5#]
- 1...d6 2.♙e5 [3. ♖g3#] ♙f4 3. ♖xf4#
- 1...d5 2.♙d6 [3. ♖g3#] ♙f4 3. ♖xf4#

Both sides vacate a flight square for their Kings

B023



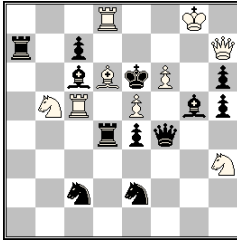
±3 (8+13)

- 1. ♖c3? [2. ♖xe2 [3. ♖e4#, ♖xe5#] fxe2 3. ♖xe2#]
- 1... ♖g2 a 2. ♖c6 A (2. ♙c6? B ♖b8!) [3. ♖xb5#] ♙xc6 3. ♖xc6#
- 1... ♖g2 b 2. ♖c6 B (2. ♙c6? A ♖xd3!) [3. ♖xb5#] ♙xc6 3. ♖xc6#
- 1... ♖c8/♖d8 2. ♖g1+ ♖f2 3. ♖xf2#, 2...f2 3. ♖xe2#
- but 1... ♖xd3!

- 1. ♙xf3! [2. ♖xe2 ♖g5 3. ♖e4#]
- 1... ♖g2 a 2. ♖c6 B (2. ♙c6? A ♖b8!) [3. ♖xb5#] ♙xc6 3. ♖xc6#
- 1... ♖g2 b 2. ♖c6 A (2. ♙c6? B ♖xd3!) [3. ♖xb5#] ♙xc6 3. ♖xc6#
- 1... ♖xc8/♖d8 2. ♖g1+ ♖f2 3. ♖xf2#

Reciprocal change with interference, critical moves, anticritical moves

B024

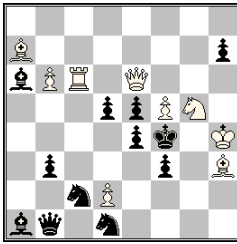


≠3 (9+12)

- 1. ♖g6!** [2.f7+ ♜f6 / ♖f6 3.f8 ♜+]
1... ♗xf6 2. ♜xg5+ hxg5 3. ♗xf6♯
1... ♜xf6 2. ♜xf4+ ♜xf4 3. ♗xf6♯
1... cxd6 2. ♜xd4+ ♜cxd4/ ♜exd4 3. ♗xd6♯
1... ♜xd6 2. ♜xc7+ ♜xc7 3. ♗xd6♯

Capture as a thematic black defensive effect at B1 moves and a thematic white attacking effect at W2 moves. In addition, capture also features as a harmful effect: black pieces are captured at W3 moves on the junction point f6 or d6; white pieces are captured after sacrifice at B2 moves

B025

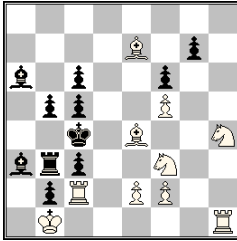


≠3 (9+12)

- 1. ♜b8?** [2. ♗xd5/ ♗xe5+] ♜c8!
1. ♗xd5? [2. ♗xe4+/ ♜e6♯] ♜d4!
1.f6? [2. ♗f5+/ ♗g4♯] ♜de3/ ♜ce3!
1. ♜g4? [2. ♜h3♯]
1... ♜f1 2. ♜h3+
1... e3 2. ♗xd5
but 1... ♜f2!
- 1.b7!** [2. ♗xe5+ ♜xe5 3.b8 ♗♯, 2... ♜xe5 3. ♜e6♯
 2. ♜g1 [3. ♜h2♯]]
1... d4 2. ♗d5 ♜c~ (♜d4??) 3. ♜e6♯ (2. ♗xe5+? ♜xe5 3. b8 ♗+ ♜d5!)
1... e3 2.f6 h5 (♜e3??) 3. ♗f5♯ (2. ♗xe5+? ♜xe5 3. ♜e6+ ♜e4!)
1... f2 2. ♜g2 ~ (♜f2??) 3. ♜h3♯ (2. ♗xe5+? ♜xe5 3. ♜e6+ ♜f3!)

Square vacation for another black piece vs. square vacation for another white piece
 Three thematic tries. Refutation of thematic try is unplayable after the key due to the motive antimform: square occupation
 Black defensive moves are doubly motivated, by square vacation and closing of a diagonal, to cope with both threats, but only the former motive is thematic

B026

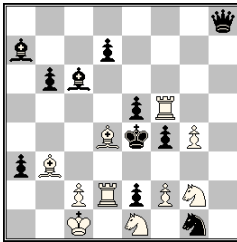


±3 (10+11)

1. ♖d1! [2. ♖d4+ cxd4 3. ♘d2#]
 1... b4 (for 2... ♖b5) 2. ♙d3+ ♖d5 3. e4#
 1... ♗b4 (for 2... ♖b3) 2. ♘d2+ ♖d4 3. ♘hf3#
 1... ♖b4 2. ♖d4+ ♖a5 3. ♙d8#

Black square vacation vs. white square vacation
 Black square vacation to provide a flight to the King. White square vacation to liberate that square for the mating piece.
 Three black pieces move to the same square.

B027

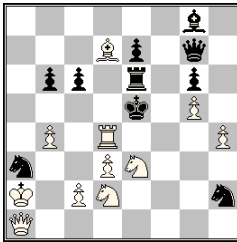


±3 (10+11)

- 1... exd4 2. f3+ ♘xf3 3. ♖xe2#
 1.c3? ♙b5!
 1.c4? ♙a4!
 1. ♙c3? f3!/b5!
 1. ♙a1! [2. f3+ ♘xf3 3. ♖xe2#]
 (2.c3? ♗h3!, 2.c4? ♙a4!)
 1... f3 2.c3 [3. ♙c2#] ♙a4/ ♙b5 3. ♙d5#
 1... b5 2.c4 [3. ♙c2#] ♗h3 3. ♖xe5#

Interference vs. Interference

B028

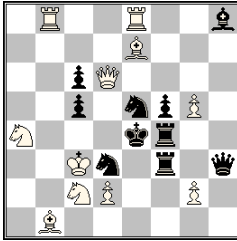


±3 (11+10)

1. ♖c3? [2. ♖e4+ ♖d6 3. ♗xc6#]
 1... ♖d6+ 2. ♖c4+ ♖d4 3. ♗xd4#
 1... ♖f6+ 2. ♖d5+ ♖f4 3. ♗e5#
 but 1...c5!
 1. ♖e1! [2. ♘f5+ ♖xf5 3. ♗e4#]
 1... ♖d6+ 2. ♘d5+ ♖xd4 3. ♗e4#
 1... ♖f6+ 2. ♘ec4+ ♖xd4 3. ♗e5#
 1... ♖xd4 2. ♘b3+ ♖e5 3. ♗g3#
 1... ♘xc2 2. ♘xc2+ ♖f5 3. ♗e4#
 1... ♘c4 2. ♘dxc4+ ♖xd4 3. ♗a1# - switchback

Thematic variations in try and solution with changed play
 Flight giving key

B029

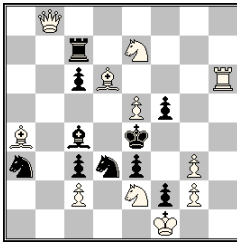


±3 (11+10)

1. ♖b8! [2. ♕d4+ cxd4+ 3. ♖xd4#]
1... ♗d~+ 2. ♗e3+ A ♗ed3+ 3. ♜f6# B, 2... ♗c2/d3 3. ♗xc5#
1... ♗e~+ 2. ♜f6+ B ♗de5+ 3. ♗e3# A, 2... ♗e7/e5 3. ♖xc6#

Consecutive crosschecks, reciprocal exchange of W2/W3, exchange of places and switchback of both B ♗

B030

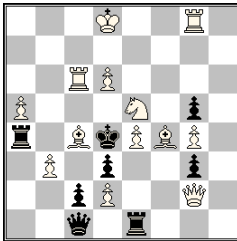


±3 (11+10)

1. ♖b4! [2. ♗xc3+ ♔d4 3. ♗xf5#]
1... ♗d~ 2. ♖h4+ f4 3. ♖xf4#
1... ♗xe5 2. ♖e6 [3. ♖xe5#] ♖xe7 3. ♗xc6#, 2... ♗xc2 3. ♗xc2#
1... ♗f4 2. ♖h4 [3. ♖xf4#] ♖xe7 3. ♗xc6#, 2... ♗xc2 3. ♗xc2#

Pin vs. Pin; pinning key

B031

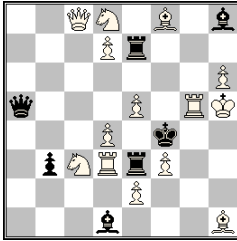


±3 (13+8)

1. ♖c8! [2. ♗c6+ A ♗c5 3. ♖xg5# B]
1... gxf4 2. ♗f3+ C ♗xe4 3. ♖e8# D
1... ♖a1 2. ♖xg5 B [3. ♗c6# A] ♖xc4 3. ♖xc4#
1... ♖b2 2. ♖e8 D [3. ♗f3# C] ♖e3/♖f1 3. ♗e3#
1... ♖xa5 2. ♗d5 [3. ♗f3#/♖c4#] ♖xe4 3. ♖xe4#

Battery creation of black is answered by battery creation of white
 Transfer of the thematic white moves into mates
 Four variations showing two reciprocal systems of 2nd/3rd move exchange

B032

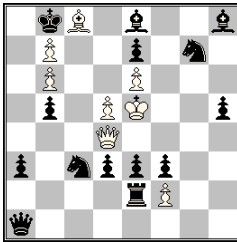


±3 (14+7)

- 1. ♖c6! [2. ♖g4+ ♕f5 3. ♖g6♯]
- 1... ♗7xe5 2. ♜d6 [3. ♜e6♯ A] (2. ♖d6? ♗Rxd3! 2. ♖c7? ♖xc7!)
2... ♖d5/♖xd8 3. ♜d5♯ B, 2... ♗xd3 3. ♖e4♯
- 1... ♗3xe5 2. ♖d6 [3.e3♯] (2. ♖c7? ♖xc7!)
2... ♜xe2 3. ♜xe2♯
- 1... ♖xe5 2. ♖c7 [3. ♜d5♯ B] (2. ♖d6? ♖xd6!)
2... ♗xd7 3. ♜e6♯ A, 2... ♗xf3 3. ♗xf3♯

Black pinning vs. White pinning
 Three different Black defences pinning W ♖g5. In reply Three different white moves pin the black pieces which pin W ♖g5!
 Dual avoidance play on W2 move, Pseudo Le Grand
 Two pinmates including threat in each variation

B033

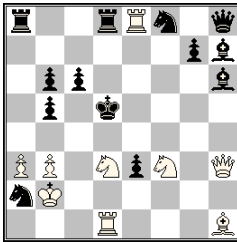


±3 (8+14)

- 1. ♖f4! [2. ♕d4♯]
- 1... ♜xe6+ 2. ♜xe6+ ♜e5 3. ♖xe5♯
- 1... ♜f5+ 2. ♜xf5+ ♜e5 3. ♖xe5♯
- 1... ♜xd5+ 2. ♜xd5+ ♖e5+ 3. ♖xe5♯
- 1... ♜e4+ 2. ♜xe4+ ♖e5+ 3. ♖xe5♯
- 1... exf2+ 2. ♜d4+ ♗e5 3. ♖xe5♯

Three variations with a king on e5 and a queen on d4. The queen is pinned to the king by the black rook on f5. White sacrifices the queen to open the f-file and attack the king.

B034

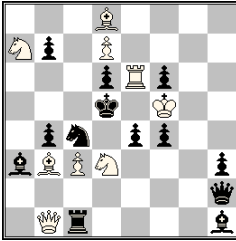


±3 (9+13)

- 1. ♖c8! [2. ♜b4+ ♕c5 3. ♖xc6♯]
- 1... ♖g6+ 2. ♜fe5+ (♜de5+?) ♕d6 3. ♖xc6♯, 2... ♕d4 3. ♜xc6♯
- 1... ♖g5+ 2. ♜de5+ (♜fe5+?) ♕c5/♜d3 3. ♖xc6♯, 2... ♕e4 3. ♖g4♯
- Two thematic variations with battery checks plus Bi-Valve
- 1... ♗xa3 2. ♖xd8+ (♗xd8+?) ♜d7 3. ♖xd7♯
- 1... ♜e4 2. ♗xd8+ (♖xd8+?) ♜d7 3. ♖xd7♯
- Adabashev system
- (1... ♜xd3 2. ♗e5+ ♕d6 3. ♗xd3♯
- 1... ♗axc8 2. ♜b4+ ♕c5 3. ♜a6♯ - changed mate from threat

Doubling of the theme in both variations.
 Dual avoidance in Abadashev system
 Good, long range key with Queen sacrifice

B035

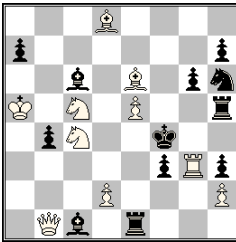


1. ♖b6! [2. ♖xd6+ ♕xd6 3. d8 ♖#]
 1... bxc3 2. ♗xc4+ ♕xc4 3. ♖b5#
 1... f3 2. ♘xb4+ ♗xb4 3. ♖xe4#

Line-openings vs. line-openings

♠3 (9+13)

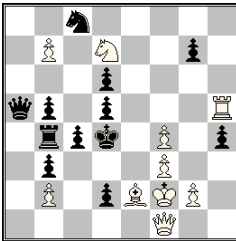
B036



1. ♖d3! [2. ♖d4+ ♗e4/♖e4 3. ♘d3#]
 1... ♗hx5 2. ♖d6 [3. ♗g5#] ♘f7 3. ♖g4#
 1... ♗ex5 2. ♗c7 [3. ♖e3#] ♘f5 3. ♗xe5#, 2... ♘g4 3. ♖xg4#

♠3 (10+12)

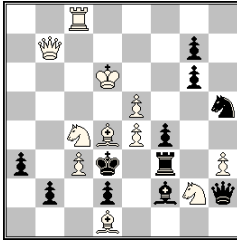
B037



1. ♖xh4? [2. f5#] ♖d8!
 1. ♖g1? [2. ♖f1#] ♖a1!
 1. ♖b1! [2. ♖xd5+ ♕xd5 3. ♖e4#]
 1... ♖a7 2. ♖xh4 [3. f5#] d1 ♘+ 3. ♖xd1#, 2... g5 3. f5g5#
 1... ♖b6 2. ♖g1 [3. ♖f1#] d1 ♖/d1 ♘+ 3. ♖xd1#
 1... g5 2. f5g5
 (1. ♖d1? c3, 1. b8 ♘? ♘a7!)

♠3 (10+12) Double white battery formation against black battery formation in a logical setting

B038



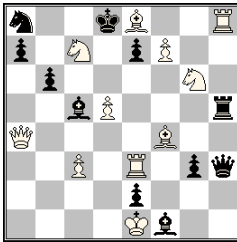
1... ♗g3 2.e6
1... ♗e3 2. ♖b3

1. ♖b5! [2. ♗ce3+ ♗xe4 3. ♗c2#]
1... ♗e3 2. ♗c5 [3. ♗d6#] b1 ♖ 3. ♖xb1#
1... ♗g3 2. ♗e7 [3. ♗d6#] b1 ♖ 3. ♖xb1#
1... ♗xh3 2. ♗e6 [3. ♗d6#] b1 ♖ 3. ♖xb1#
 1... ♗xe4 2. ♗xd2+ ♗f5 3.e6#

Flight giving key, threefold theme (unblock of f3 vs. unblock of d6)

♣3 (11+11)

B039

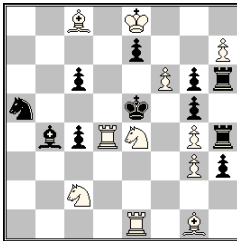


1. ♖xa7? ♖c8!

1. ♖c6! [2. ♖xa8+ ♖c8 3. ♗e6#]
1... ♗d6 2. ♗e6 [3. ♖d7#] ♖xe6 3. ♗xe6#, 2... ♗c8 3. ♗d7#
1... e5 2. dxe6 e.p. [3. ♖xa8#/♖d7#] ♖xe6 3. ♗xe6#
1... ♗e5 2. ♗e6+ ♖xe6 3. ♗d7#, 2... ♗xe6 3. ♖xa8#/♖d7#
 1... ♖c8 2. ♗d7+ ♗xh8 3. ♗e6#

♣3 (11+11)

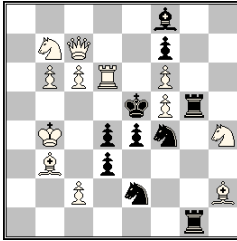
B040



1. ♗f8! [2. ♗d2+/2. ♗c3+ ♗xf6 a 3. ♗e6# A
1... exf6+ 2. ♗d6+ ♗xe1 b 3. ♗f7# B
1... e6+ 2. ♗c5+ ♗xf6 a 3. ♗e6# A
 2... ♗xe1 b 3. ♗d7# C
1... ♗xg4 2. ♗f2+ ♗xf6 a, ♗xe1 b, ♗e4 3. ♗g4# D
 1... ♗xe1 2. ♗xe1 [3. ♗f3#]

♣3 (11+11)

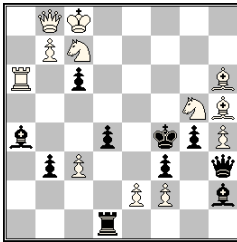
B041



1. ♖b5? [2. ♜e6♠] ♗c3+!
 1. ♖a5? [2. ♜e6♠] ♜a1+!
 1. ♖c4? [2. ♜e6♠] ♞xf5!
1. ♜b8! [2. ♜e8+ ♜e7 3. ♜xe7♠]
1... ♗g3 2. ♖b5 [3. ♜e6♠] ♜xd6 3. ♜xd6♠
1... ♞g3 2. ♖a5 [3. ♜e6♠] ♜xd6 3. ♜xd6♠
1... ♜5g3 2. ♖c4 [3. ♜e6♠] ♜xd6 3. ♜xd6♠
 (1... ♜e7 2.fxe7 ♞g8 3. ♞e6♠)

♠3 (12+10) Unpin by Black of a black piece on the first move, unpin by White of a white piece on the second move

B042

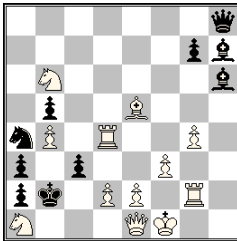


- 1. ♖d7!** [2. ♜f8+ ♖e5 3. ♜g7♠]
1... g3+ 2. ♗ce6+ ♖f5 3. ♜f4♠
1... c5+ 2. ♗b5+ ♖f5 3. ♜g6♠
1... dxc3+ 2. ♗d5+ ♖f5 3.e4♠
 1.e4? dxe3 e.p.!

In three variations White replies with battery check to the battery check

♠3 (12+10)

B043

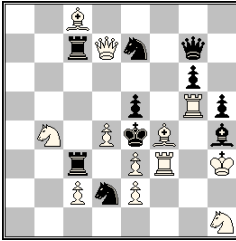


1. ♜c4? [2. ♗xa4+ bxa4 3. ♜xc3♠]
 but 1... ♜xd2!
1. ♞d8! [2. ♗xa4+ bxa4 3. ♜xc3♠]
1... g6 2.e3 ♜xe3 3.dxe3♠, 2... ♜xe5 3.dxc3♠, 2... g5 3.d3♠
1... g5 2.e4 ♜xe5 3.dxc3♠, 2... ♜xe4 3.d3♠
 1... ♜xd2 2. ♞xd2+ ♜c2 3. ♞xc2♠

Black opens a black line vs. White opens a white line
 Reciprocal closure of black lines (when Black closes the line of a bishop,
 White closes the line of the other bishop).
 Reciprocal moves: single-step black Pawn vs. single-step white Pawn
 (g6/e3) and double-step black Pawn vs. double-step white Pawn (g5/e4)

♠3 (12+10)

B044

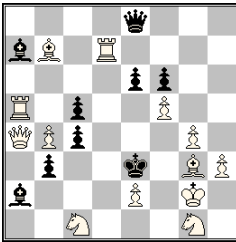


1. ♖a6! [2. ♙d3+ ♜xd3 3.cxd3#]
 1... ♜7c4 2. ♜gg3 [3. ♗f2#] ♙xg3 3. ♗xg3#
 1... ♜3c4 2. ♜fg3 [3. ♗f2#] ♙xg3 3. ♗xg3#
 1... ♗c4 2. ♙g3 [3. ♗f2#] ♙xg3 3. ♗xg3#

Three variations showing line closing of a white bishop on the same square answered by line closing of a black bishop on the same square

±3 (12+10)

B045

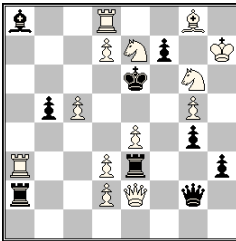


1. ♗f3! [2. ♙f2+ ♔f4 3.e3#]
 1... ♜xb4 2. ♜e5+ ♟fxe5 3. ♙xa7#
 1... ♟xf5 2. ♜d3+ ♜xd3 3. ♙xe8#

Line-opening twice. On the mating move White exploits the black line-opening

±3 (13+9)

B046

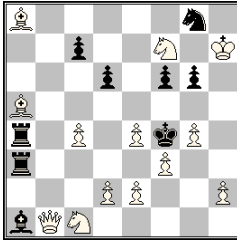


1. d4! [2. ♗f8+ ♔xe7 3. ♜e8#]
 1... ♙xe4 2. ♙xe3 (2. ♜xe3?) [3.d5#] ♜xd2 3. ♜a6#, 2... ♙xd2 3. ♙xe4#
 1... ♙xe4 2. ♜xe3 (2. ♙xe3?) [3. ♙xg4#]

Pin vs pin and also capture vs capture
 Dual avoidance

±3 (13+9)

B047



±3 (13+9)

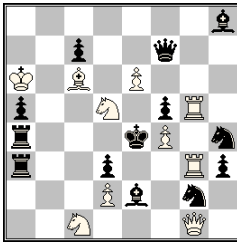
1... ♖c3 2. ♗xc3, 1... ♜b3 2. ♖xb3, 1...g5 2.e5

1. ♗c3? [2. ♘d3♯] ♜xc3!

1.e5? [2. ♖e4♯]
1...d5/ ♜xc4 2. ♖xg6
but 1...f5!

1. ♖d3! [2.e3+ ♗xf3 3. ♖e2♯]
1...c6 2. ♗c3 [3. ♖e3♯/ ♖xd6♯]
1...d5 2. ♖c3 [3. ♘d3♯/ ♗xc7♯]
1... ♗d4 2.e5 [3. ♖xd4♯/ ♖e4♯] ♜xd3 3. ♘xd3♯

B048

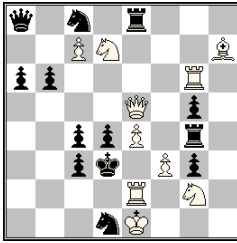


±3 (10+13)

1. ♖c5! [2. ♜e3+ ♘xe3 3. ♖xe3♯]
1... ♗f3 (line-closing for ♜g3) **2. ♗f6+** (line-closing for ♖f7) ♗xf4
3. ♖xf5♯
1... ♗f3 (line-closing for ♜g3) **2. ♗c3+** (line-closing for ♜a3) ♗xf4
3. ♘d3♯
1... ♗d4 (line-closing for ♖c5) **2. ♗f6+** (line-closing for ♗h8) ♗xf4
3. ♖xd4♯
1... ♗d4 (line-closing for ♖c5) **2. ♗b4+** (line-closing for ♜a4) ♗xf4
3. ♖xd4♯

Two pairs of variations. In the defences Black close the lines for W ♜g3 and W ♖c5. On the second move, white battery plays, closing lines for four different black pieces

B049

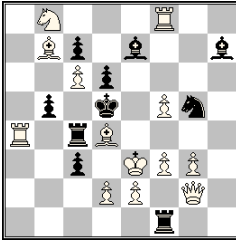


±3 (10+13)

1. ♖a5! [2. ♜d2+ cxd2+ 3. ♖xd2♯]
1... ♖xe4 2. ♜xb6 [3. ♗c5♯] ♜e5 3. ♗xe5♯
1... ♜gxe4 2. ♜xg5 [3. ♗f4♯] ♜f8 3. ♗e5♯
1... ♜exe4 2. ♜c6 [3. ♗e5♯]

Black pins the w ♜e2 by three line pieces on the e4-square; then these pieces are pinned by White on the second move

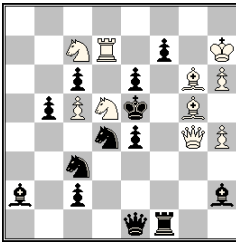
B050



♯3 (13+10)

1. ♖d3! [2.e4+ ♜xe4 3.fxe4♯]
 1... ♜xf5+ 2. ♜xf5+ ♙e6 3. ♜c8♯
 1... ♜xf3+ 2. ♜xf3+ ♜xf3 3.e4♯, 2... ♜e4 3. ♜xe4♯
 1... ♜xd4+ 2. ♜xd4+ ♙c5/♙e5 3. ♜d7♯
 1... ♜e1 2.f4+ ♜f3 3. ♜xf3♯, 2... ♜e4 3. ♜xe4♯

B051

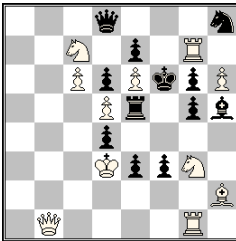


♯3 (10+13)

1. ♜f6! [2. ♜d5+ ~xd5 3. ♜d7♯]
 1... ♜f3 2. ♜f4+ ♜xf4 3. ♜g4♯
 1... ♜de2 2. ♜xe4+ ♜xe4 3. ♜g4♯
 1... ♜b3 2. ♜xe6+ fxe6 3. ♜g4♯
 1... ♜f5 2. ♜d3 [3. ♜d7♯]
 1... ♜xf6 2. ♜xf6+ ♜xf6 3. ♜g5♯

Unblock vs. unblock. The key and threat are also unblocks

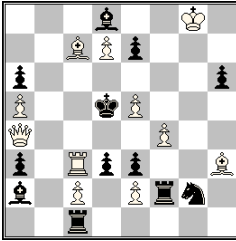
B052



♯3 (11+12)

1. ♜c4? [2. ♜f5+ ♜xf5 3. ♜e4♯, 2...gxf5 3. ♜xh5♯]
 1... ♜e4 2. ♜xe4+ ♜f5 3. ♜xg5♯
 or 2. ♜xe4 [3. ♜xd4♯] ♜f7 3. ♜xf7♯, 2...g4 3. ♜f4♯
 1... ♜g4 2. ♜xg6+ ♜xg6 3. ♜f7♯
 but 1...d3!
 1. ♜xd4! [2. ♜f5+ ♜xf5 3. ♜e4♯
 2...gxf5 3. ♜xh5♯]
 1... ♜e4+ 2. ♜xe4+ ♜f5 3. ♜xg5♯
 1... ♜xd5+ 2. ♜xd5+ ♜xe6 3. ♜e4♯
 1... ♜g4 2. ♜xg6+ ♜xg6 3. ♜f7♯

B053

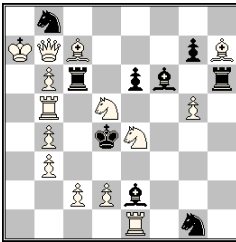


- 1. ♖b4? [2. ♜c5♯] ♜xc2!
- 1. ♙f5? [2. ♖e4♯] ♜xf4!
- 1. ♜c6? [2. ♙e6♯] ♗xf4!
- 1. ♙h7!** [2. ♖c6+ ♗d4 3. ♜xd3♯]
- 1... ♗d1 2. ♖b4 [3. ♜c5♯] **ABC**
- 1... ♗xf4 2. ♙f5 [3. ♖e4♯] **BCA**
- 1... ♗e1 2. ♜c6 [3. ♙e6♯] **CAB**

♣3 (11+12)

Direct guard of mate square vs. Direct guard of mate square
 Cycle of white pieces ♖♜♙ (**ABC**): **A** - guards own thematic square and another thematic square, **B** - mates, **C** - guards only own thematic square (e4 for ♖, c5 for ♜, e6 for ♙)

B054



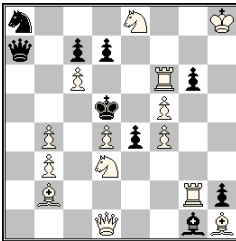
- 1. ♗f4!** [2. ♗xe6+ **A** ♜xe6 3. ♖d5♯/3. ♜d5♯]
- 1... ♙xb5 2.c3+ **B** ♜xc3 3.dxc3♯
- 1...g6 2. ♗d6** [3. ♗xe6♯ **A**]
- 2... ♜xd6 **a** 3.c3♯ **B**
- 2... ♜c5 b** 3. ♖e4♯ **C**
- 2... ♙g4 3. ♜e4♯
- 1... ♜g6 2. ♗c5** [3.c3♯ **B**]
- 2... ♜d6 a** 3. ♖e4♯ **C**
- 2... ♜xc5 **b** 3. ♗xe6♯ **A**
- 2... ♜xc7 3. ♗cxe6♯

♣3 (14+9)

Theme F interferences vs. interferences, Shedyey cycle

- 1... ♜xc2 2. ♖d5/ ♜d5+ exd5 3. ♜xd5♯/♖xd5♯

B055

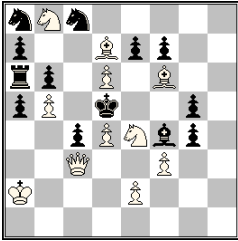


- 1. ♜gxf6? [2. ♜d6+ cxd6 3. ♜xd6♯]
- 1... ♙xd4 a** 2. ♗f2 **A** [3. ♙xe4♯]
- 1... ♖xd4 b** 2. ♗c5 **B** [3. ♙xe4♯]
- but 1... ♖b8!
- 1. ♜c2!** [2. ♜d6+ cxd6 3. ♗f6♯]
- 1... ♙xd4 a** 2. ♗c5 **B** ♖xc5 3. ♜xc5♯
- 1... ♖xd4 b** 2. ♗f2 **A** ♙xf2 3. ♜c5♯
- 1... gxf5 2. ♖h5 ♙xd4/ ♖xd4 3. ♖f7♯

♣3 (14+9)

Reciprocal change with pins

B056



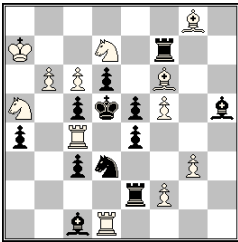
♠3 (11+13)

1. ♖a3? e5!
1. ♙xe7? ♜xe7!

1. ♜c6! (gxf3) [2. ♜d8 [3. ♙c6♠] ♜xe4 3. ♖xf3♠]
(2. ♖a3? ♙d2!, 2. ♙xe7? ♙e5!)
1... exd6 2. ♜d2 - 2... ♙xd2 **3. e4♠**, 2... ♙e3 3. ♖xc4♠
(2. ♜e~? ♙e3!, 2. ♖e3? c3!)
1... e6 2. ♜e5 - 2... ♙xe5 **3. ♙c6♠**, 2... ♜e7 3. ♖xc4♠
1... exf6 2. ♖a3 - 2... ♙e5 **3. ♜c3♠**, 2... ♙d2 3. ♜xf6♠ (2... c3 3. ♖b3♠)
1... e5 2. ♙e7 - **3. ♜f6♠**, 2... ♜xe7 3. ♜xe7♠, 2... exd4 3. ♖xd4♠
(2. dx e5? 3. ♖d4♠, 2... ♙e3!)

Fourfold vacation of the square e7 (Pickaninny) is answered with vacation of four different squares

B057

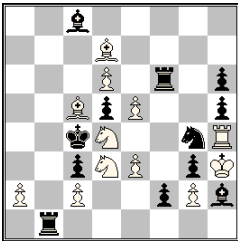


♠3 (12+12)

1. b7? [2. ♜b6♠] ♜b2!
1. ♙e7? [2. ♜f6♠] ♙g5!

1. g4! [2. gxh5 [3. ♙xf7♠]]
1... ♙d2 2. b7 [3. ♜b6♠]
1... ♜d2 2. ♙e7 [3. ♜f6♠]
1... ♙g6 2. fxg6 [3. ♙xf7♠]

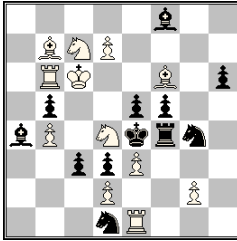
B058



♠3 (12+12)

1. ♙a4! [2. ♙b3+ ♜xb3 3. axb3♠]
1... ♜xe3+ 2. ♜f5+ ♜g4 3. ♜e3♠
2... d4 3. ♜xd4♠
1... ♜xe5+ 2. ♜e6+ ♜g4 3. ♜e5♠
2... ♜f4 3. ♜xe5♠
2... d4 3. ♜xd4♠

B059

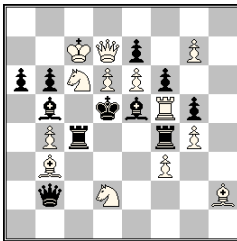


±3 (12+12)

1. ♖de6! [2. ♗c5+ ♜xc5 3. ♘xc5#]
 1... ♗dxe3 (2. ♗c5+? ♘d4!) 2. ♗xb5 [3. ♘c7#] (2. ♗:b5? ♜b3)
 2... ♜b3 3. ♗xc3#, 2... ♜d6 3. ♗xd6#, 2... ♜xb5+ 3. ♗xb5# A,
 2... ♗xf6 3. ♗xe3#
 1... ♗gxe3 (2. ♗c5+? ♘d4!) 2. ♗xb5 [3. ♘b6#] (2. ♗:b5? ♜b3)
 2... ♜b3 3. ♗xe5#, 2... ♜c5 3. ♗xc5#, 2... ♜xb5+ 3. ♗xb5# A
 1... ♜b3 2. ♗xb5+ A ♜d5 3. ♜xd5#
 1... ♗xf6 2. exf4+ ♗e3 3. ♗xe3#
 1. ♗ce6? [2. ♘c7#]
 1... ♗xf6 2. exf4+ ♗e3 3. ♗xe3#
 but 1... ♜b3!
 1. d8 ♗? [2. ♗d5#/2. ♘d7#] ♗xf6!

Black defends by releasing d4 for the B♖'s arrival (2. ♗c5+? ♘d4!); White attacks by releasing c7 or b6 for the W♗'s arrival. The harmful effect of the defences is also matched: the black-self-pin is utilized for royal battery pin mates (including the W♗'s cross); the white self-pin is utilized to prevent mate until the unpinning defence 1... ♜b3. Reciprocal dual avoidance at W2 moves

B060

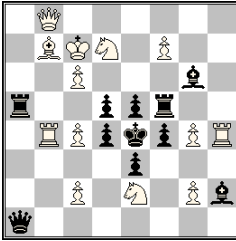


±3 (13+11)

1. g8 ♗? ♜xc6!
 1. ♗xe5+? ♗xe5!
 1. ♜xc4+? ♗xc4!
 1. ♜g1! [2. g8 ♗ [3. ♗gxe7#]]
 1... ♗xb3 2. ♗xe5+ fxe5 3. dxe7#
 1... ♗xf5 2. ♜xc4+ ♜xc4 3. ♗xe7#
 1... ♜xc6 2. ♗xc6+ ♗xe6 3. g8 ♗/♜#

In two thematic variations capture-unpins are answered by capture-unpins; e7 is occupied by 3 different pieces on White's 3rd move in these variations and the threat

B061

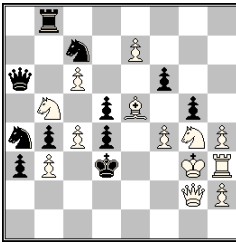


1. ♖d8? [2. ♜xe5+ ♜xe5 3. ♜f6#]
 1...d3 2.c5+ ♜d4 3. ♜c3#, 2...d4 3.c7#
 1...f3 2.g5+ ♜f4 3. ♜g3#, 2... ♜f4 3. ♜xe5#
 but 1...dxc4!

1. ♖c8! [2. ♜xe5+ ♜xe5 3. ♜f6#]
1...d3 2.c5+ ♜d4 3. ♜c3#, 2...d4 3.c7#
1...f3 2.g5+ ♜f4 3. ♜g3#, 2... ♜f4 3. ♜xe5#
1...dxc4 2.c7+ ♜d5 3. ♜c5#

≠3 (13+11) White line openings against black openings
 Pin mates in each variation
 3-fold setting of the required theme

B062



1... ♜xb5 2. ♜xf6 [3. ♜g4#] gxf4+ 3. ♜xf4#, 2... ♜c3/♜e3 3. ♜g4#
 1...fxe5 2. ♜xe5+ ♜e3 3. ♜g4#

1. ♜xf6! [2. ♜e5+ ♜e3 3. ♜g4#]
1... ♜xb5 2.hxg5 [3. ♜h4# **A**] ♜c3 3. ♜h4# (2. ♜e5? ♜c3!)
1... ♜xb5 2.fxg5 [3. ♜f4# **B**] ♜c3 3. ♜f4# (2. ♜e5? ♜c3!)
1... ♜xb5 2. ♜h6 [3. ♜g4# **C**] ♜c3/♜e3 3. ♜g4# (2. ♜e5? ♜c3!)

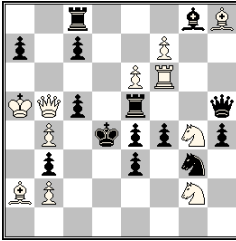
Black provides a flight square for his king is answered by white providing a flight square for his king

≠3 (13+11)

1... ♜c8 2. ♜xd4 [3. ♜c2#]
 2...gxh4+ 3. ♜xh4# **A**
 2...gxf4+ 3. ♜xf4# **B**
 2... ♜xg4+ 3. ♜xg4# **C**
 2... ♜c3 3. ♜c2#

All thematic white king moves appear again in an extra variation

B063

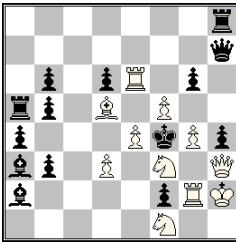


♣3 (11+14)

1. ♖e1! [2. ♘c2+ ♙d5 3. ♖xc5♠; 2...bxc2 3. ♖c4♠]
 1...c4 2. ♖h6 [3. ♖c5♠] c5 3. ♖d7♠
 1...cxb4 2. ♖xf4 [3. ♘f3♠] ♖xg4 3. ♙xe5♠, 2...c5 3. ♖d3♠

Pins vs. pins

B064

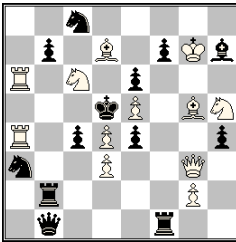


♣3 (11+14)

1. ♘d4? ♙c1!
 1. ♘3d2? ♙c5!
 1.g5? ♖h5!
 1. ♖h1! [2.e5 [3. ♖h2♠]]
 1...b2 2. ♘d4 [3. ♖e3♠]
 1...b4 2. ♘3d2 [3. ♖e3♠]
 (1... ♖b7 2.g5 [3. ♖g4♠/♖g4♠] gx5 3. ♖xf5♠)
 1.e5? [2. ♙h1 [3. ♖h2♠] e4 3. ♖:e4♠] ♖b7!

White threatens with line opening - black defends with line opening - white replies with line opening. Mutual closing of black lines unite the play

B065

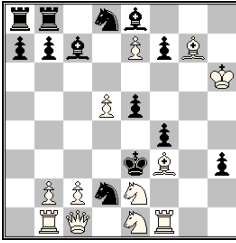


♣3 (12+13)

1. ♙e3? [2. ♘e7+ ♘xe7 3. ♖d6♠]
 1... ♖b6 a 2. ♖f4 A [3. ♘f6♠] ♖xf4 3. ♘xf4♠
 1...b6 b 2. ♙f4 B [3. ♘f6♠] ♖xf4 3. ♘xf4♠
 but 1...exd3!
 1. ♖e3! [2. ♘e7+ ♘xe7 3. ♖d6♠]
 1... ♖b6 a 2. ♙f4 B [3. ♘f6♠] ♖xf4 3. ♘xf4♠
 1...b6 b 2. ♖f4 A [3. ♘f6♠] ♖xf4 3. ♘xf4♠

Reciprocal change with interference

B066

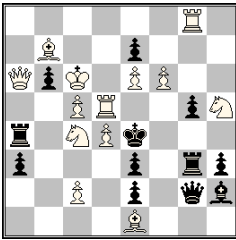


- 1.b4? [2. ♖b3#] ♙a4!
 1.c4? [2. ♖c3#] ♙a5!
1. ♙f6! [2. ♙h4 [3. ♙f2#]]
1...a5 2.c4 [3. ♖c3#]
1...b5 2.b4 [3. ♖b3#]
 1. ♖a1? [2. ♖a3#] ♙d6!

Two pairs of pawn Bristols

≠3 (12+13)

B067

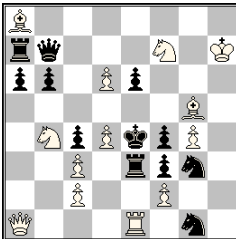


1. ♖gd8? **A** [2. ♙c7 **B** ♖f3+/♖g4+ 3. ♖e5#]
1... ♖f3 2. ♗d6+ exd6 3. ♖d3# (2. ♗d2+?)
1... ♖g4 2. ♗d2+ exd2 3. ♖d3# (2. ♗d6+?)
 1... ♙f3 2. ♗e5+ ♙e4 3. ♖d3#
 but 1... ♖xc4 2. ♙c7 ♖xd4!
1. ♙c7! **B** [2. ♖gd8 **A** ♖f3+/♖g4+ 3. ♖e5#]
1... ♖f3+ 2. ♖e5+ ♙xd4 3. ♖d8# **A**
1... ♖g4+ 2. ♖d6+ ♙f5 3. ♗xe3#
 1... ♖f3 2. ♗d6+ exd6 3. ♖d3#, 1... ♖xc4 2. ♖xc4 ♙f3 3. ♖d8#

Thematic variations in try and solution with changed play. Changed tactical motives: line activations in try vs. battery checks in solution. Reversal 2 in specific threemover form with quiet threat

≠3 (13+12)

B068

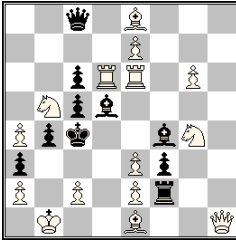


- 1. ♖d1!** [2. ♖d3+ cxd3 3.cxd3#]
1... ♗1e2 2. ♙e7 [3. ♗g5#] ♗xd4 3. ♖xd4#
1... ♗3e2 2.d7 [3. ♗d6#] ♗xd4 3. ♖xd4#

Unpin twice

≠3 (13+12)

B069

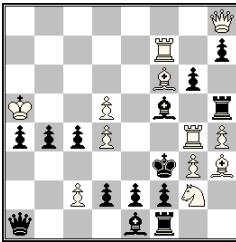


♠3 (15+10)

1. ♖h8! [2. ♘xa3+ bxa3 3. ♖c3#]
1... ♜b7 2. ♖h4 [3. ♘e5# **A**] ♙e4 3. ♚xe4# **B** (2. ♖g8? ♜xe7!)
1... ♜b8 2. ♖g8 [3. ♚e4# **B**] ♙e5 3. ♘xe5# **A**, 2... ♙xe6 3. ♖xe6#
 (2. ♖h4? ♖xd6!, 2. ♙f7? ♖xh8!)

The black ♜ sets up two direct masked batteries, and White replies by also setting up two direct masked batteries with his ♖, leading to dual avoidance and pseudo le Grand

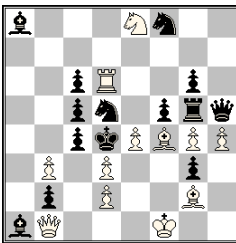
B070



♠3 (12+14)

1.d6! [2. ♖a8+ ♙e4+ 3. ♙g5#]
1... ♙xg4+ 2. ♙e5+ ♙f5/♚f5/♙e4 3. ♖a8#
1... ♙e6+ 2. ♙g5+ ♙f5 3. ♖a8#, 2... ♙xf7 3. ♖f6#
1... ♙f~ 2. ♙g5+ ♙f5 3. ♖a8#
1... ♖xd4 2. ♙xd4 [3. ♖a8#]
 1. ♖a8? ♖:d4 2. ♙:d4 ~ 3.d6#
 but 1... ♙e6! ♙g5+ ♙:f7!
 1. ♖b8? ♖:d4 2. ♙:d4 g5 3. ♚:f5#
 but 1...g5!
 1. ♖e8? ♖:d4 2. ♙:d4 d1 ♘ 3. ♖e4#
 but 1...d1 ♘!

B071

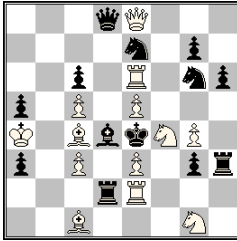


♠3 (12+14)

1. ♘c7! [2. ♚xd5+ cxd5 3. ♘b5#]
1... ♜xe4 2. dxc4 [3. ♖xe4#] ♚e5 3. ♙e3#
1... ♜xg4 2. ♙e2 [3. ♖g1#] cxd3+ 3. ♖xd3#

Line openings vs. line openings with quiet continuations

B072



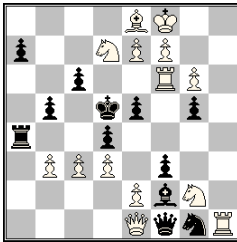
±3 (13+13)

- 1. ♖f7! [2.exd4+ ♜xe2 3. ♗d3#]
- 1... ♗xe3 2. ♖g2 [3. ♜xe3#, ♖f3#] ♖f8 3. ♜xe3#, 2... ♗f5 3. ♖xf5#
- 1... ♗xe5 2. ♖xg6 [3. ♖f3#, ♖f4#, ♜xe5#] ♖f8 3. ♜xe5#
- 1... ♗xc5 2. ♖d3 [3. ♖f3#, ♖xc5#] ♖f8 3. ♖xc5#
- 1... ♗xc3 2. ♖d5 [3. ♖f3#, ♖xc3#] ♖f8 3. ♖xc3#
- 1... ♗h2 2. ♖h5 [3. ♖f3# 3. ♖xg3#] ♖f8 3. ♖xg3#, 2... ♗f5 3. ♖xf5#
- 1... g2 2. ♖fxh3 [3. ♖f3#, 3. ♖f2#] ♖f8 3. ♖f2#, 2... ♜xe2 3. ♖f3#

Line opening by Black and White
Bishop star in B1

In all 6 variations W ♖f4 opens the f-file for W ♖

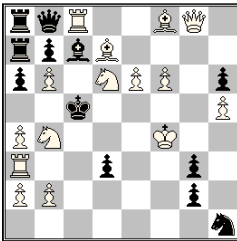
B073



±3 (14+12)

- 1.g7? [2. ♜hh6 [3. ♜d6#]]
but 1... ♖h3!
- 1. ♜h6! [2.g7 [3. ♜d6#]]
- 1... dxc3 2.e4+ ♜xe4 3. ♖xe4#, 2... ♗d4 3. ♜d6#
- 1... c5 2. ♖b6+ axb6 3. ♗c6#
- 1... e4 2. ♖f4+ gxf4 3. ♜h5#
- 1... ♜a6 2.c4+ bxc4 3.bxc4#
- 1... ♗g3 2.e4+ dxe3 e.p. 3. ♖xe3#

B074



±3 (15+12)

- 1. ♖g4! [2. ♖f5+ ♗xb6 3.a5#, 2... ♗xb4 3. ♜b3#, 2... ♗d4 3. ♜xd3#/♖d5#/♖e5#]
- 1... ♗xb4 2. ♗e3+ (2. ♗f3?/♗f5?) (2. ♖f5? [3. ♜b3#] ♗xd6+!) 2... ♗a5 3. ♖c4#, 2... ♗c5 3. ♖d4#
- 1... ♗d4 2. ♖f3+ (2. ♗e3?/♗f5?) (2. ♖f5? [3. ♖d5#/♖e5#] ♗xd6+!) 2... ♗e5 3. ♖f4#, 2... ♗c5 3. ♖c4#
- 1... ♗xb6 2. ♖f5 [3. ♖c4#] (2. ♗e3? g1 ♖+!, 2. ♗f3? g1 ♖+!) (2. ♖f5? [3.a5#] ♗xd6+!) 2... ♗xd6 3.a5#

Black self-unpin vs. white self-unpin: three unpins of ♗c7 by B ♗ answered by three different unpins of W ♖ by W ♗
Cyclic dual avoidance on W2 move.
Black King vs. White King duel