



**WORLD FEDERATION  
FOR CHESS COMPOSITION**

**10<sup>th</sup> WORLD CHESS COMPOSITION  
TOURNAMENT 2015-2017**

# **REPLIES to CLAIMS**

**February 2017**

---

**The following CLAIMS are not included in this document.**

1. Claims mentioning the thematic contents.
2. Claims mentioning technical details and quality of implementation.
3. Claims stating the opinion (like “good/bad”, “acceptable/unacceptable”).
4. Claims without variation support (like “many duals” without details).
5. Claims concerning positions beyond author’s intention (mainly studies section).
6. Anticipation claims mentioning problems published after this tournament was announced.
7. Claims discussing the original comments.

---

There is no specific order of anticipations to the same problem – they appear as they were added to this document.

## Section A

### A010 - Reply

The claim is unfounded. Changed mates produced by key/try piece guarding a black king square is a common tactic used in many twomovers. But, in **A010**, the try 1. ♖b8? and key 1. ♗e5! both provide extra guard for c6, but still produce different mates for thematic black moves. This *correction play of white knight and closing the same prospective black line twice*, with *anticipatory unpin of the white queen* doubles the required theme and is entirely original. **A010** has a flight-giving key (which none of the quoted examples in the claims have) producing the changed mates.

---

### A019 - Reply

**A019/a** has only 2 phases, **A019** has three. Moreover, new phase 1.e5! is a solution and determines the 10 WCCT theme, and Zagoruiko and Salazar themes.

---

### A031 - Reply

The only similarity between **A031** and **A031/a** consists of partially the same combination of themes. But the scheme and the play are completely different. Under such logic many compositions showing some known combination of themes could be considered anticipated. This is unreasonable. Moreover, **A031/a** lacks of reciprocal dual avoidance because the move 2. ♗xe4? does not exist in the solution, thus the thematic correspondence is very limited. In addition, **A031/a** has several constructional defects: an unprovided flight, flight-taking try and white ♕e1 unused in the try, a weak use of white ♖a5 and ♗f7 in both try and solution.

---

### A047 - Reply

**A047/a** has only 2 thematic variants (1... ♗xd4; 1... ♖xd4). **A047/b** has differences in position, tries and solution and doesn't fulfill the required theme.

---

### A055 - Reply

The claim is unfounded. This remark seems to be a mistake, having no thematic relation to the content of **A055**. Both **A055/a** and **A055/b** are not thematic for 10 WCCT, having no variations with anticipatory unpinning. Both **A055/a** and **A055/b** don't present the Secondary Dombrovskis theme. The mechanisms of both **A055/a** and **A055/b** are completely different from A055.

---

### A057 - Reply

The try threat is a random move, which is clearly not defeated by 1... ♗c2. Hence there is no dual.

### A082 - Reply

The try 1. ♖c5? is not thematic and was not mentioned in the original solution. Therefore, the dual in this try is irrelevant.

## Section B

### B003- Reply

The claim is unfounded. There are major differences between **B003** and **B003/a**. The W♙ is on different sides of the black king flights. In **B003** the *white queen is on the nearer side of the black king flights*. In **B003/a** the white queen is on the farther side of the king flights.

The *motivation for change after 1...d5+ is entirely new in B003* - after 1. ♙h8! d5+, the reply 2. ♘ce6 is avoided *only* because of interference with the mate line d6-f6, whereas in **B003/a** the motivation for change after 1...exd5+ is entirely different. Because of the different position of white queen in **B003** (see item 1) the white queen mates - especially the distant mates 3. ♙d3 and 3. ♙f6 are quite distinct and not present in **B003/a**. Considering the other differences: different threats, battery rook not being *en prise*, good economy (3 units less), and black pawn one-two step - **B003** is entirely original and is different from **B003/a**. *The only common feature is the reciprocal change after black checks, which is only a theme and cannot be basis for anticipation.*

---

### B029 - Reply

The matrix of **B029/a** is somewhat similar, however the realisation is different in main aspects.

---

### B054- Reply

The duals mentioned after 1... ♙g4 and 2... ♙c4, ♙xb5 are minor duals in non-thematic byplay. Stronger defences are indicated in the original submission.

---

### B055- Reply

The remark 1... ♙xd4 2. ♘f2! [3. ♖c5≠/3. ♙xd4≠/3. ♙xe4≠] does not make sense, because after 1... ♙xd4 2. ♘f2! ♙xf2 (correcting black move) 3. ♖c5≠ is the only possible mating move for white.

---

### B056- Reply

The duals and popular "double threat" device should not be confused. Otherwise, for example, almost all problems with quiet Novotny interference should be considered dualistic.

### **B072 - Reply**

The mentioned white moves (which occur after double/threefold threats imminent for the theme) will be parried by the thematic defenses or differentiated by the strongest black moves without any dual.

## **Section C**

### **C030 - Reply**

Defense 1... ♔f1 is unthematic.

---

### **C037 - Reply**

The claim is unfounded. Threat is not the part of contents. After Mate in 5 moves is only possible after 2. ♖d5+.

---

### **C041 - Reply**

According to the International Code author has the right to manage the solution (threat), so the move 1... ♖a1 corrects threat. In the solution 1. ♔c7! ♖a1 (corrective black move) [2. ♗xe3 + (threat) ♔d4 3. ♗3f5+ ♔e5 4. ♗xb7+ ♔e4 5. ♗xc5#] everything is clean and there are no duals.

## **Section D**

### **D001- Director's comment**

The country informed Director about the objective reason why no reply was provided.

---

### **D008 - Reply**

Claimed dual shows only a worse line of play of white king to achieve the same position in four moves instead in two moves and cannot be considered as dual. Many endgames would be dualistic in such manner. **D008/a** shows only some similarity, but cannot be considered as anticipation. It is itself dualistic: 10. ♔e3! ♖b3+ 11. ♔f4! etc. or 10... ♖b1 11. ♔e2/♔f2 ♖b2+ 12. ♔f3 etc.

---

### **D010 - Reply**

Black duals shouldn't be considered, because it isn't necessary to have single move from black. Anticipation claim is unfounded. The main idea of **D010** is refusal to capture opponent's piece.

### D017 - Reply

In comparison with **D017/a**, **D017** has a rich introductory play, with thematic try that includes a model mate.

---

### D024 - Reply

Tries in endgames are not as exact as in directmovers. In the try the move 4... ♖e2 itself does not defend against white promotion, but the promotion is defended by the move 6... ♖f5 which is unique.

---

### D026 - Reply

Speaking about the final of **D026/a** from 9. ♖c2 ♗f3 10. ♖e2 ♗xe2 11. ♘g2#, we can only speak about partial anticipation. **D026** is a development of the idea of **D026/a** where the queen becomes a hindrance. **D026** has a right to exist, taking into account all its subtleties.

---

### D029- Reply

The claim is unfounded. **D029/a** does not anticipate **D029**. The two studies only share some thematic resemblance. Both show clearance of the long diagonal to allow a Queen skewer. All particulars are different. The play and material used are different. The mechanisms to clear the diagonal are completely different. Even the final skewer positions have only the two Queens on the same squares.

---

### D032- Reply

In thematic try I there is only a different black defence, mentioned in the solution. In thematic try II the so called "black dual" shows only that black in various ways easily holds this position.

**D032/a** shows a similar method of winning, but only in the very last part of **D032**. Besides, **D032/a** has a dual 4. ♖h6! which is a systematic one in this type of position. There are also significant differences with **D032/b**, like the different thematic try 2. a4? ♗f7! Similar to **D032/a**, **D032/c** only shows a typical method to win in the very last part of **D032**. In general, **D032** is more complex than the listed examples, especially taking into account having two thematic tries.

---

### D033- Misprint in claims

The remark belongs to **D034**.

---

### D037- Reply

The possibility to refute the try by drawing, instead of winning for black, does not change the logic of the tryplay & solution.

**D039- Reply**

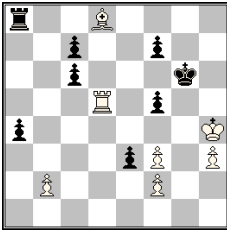
**D039/c** contains no thematic try, it is rather a sketch. The presence of thematic try 7. ♖g3?! and the preceding struggle between the sides give **D039** the right to exist, even if partially anticipated.

**D040- Reply**

**D040/a**

J. Timman  
The Problemist, 2009

**Position provided with replies**



+ (7+8)

1. ♖d1 a3 (1...exf2 2. ♙xc7 ♜e8 3. ♙g3 ♜e2 4. ♜f1) 2.bxa3 ♜a4+ 3.f4! (3. ♖g3? ♜d4! 4. ♜g1 ♜xd8 5.fxe3 ♜a8) ♜xf4+
4. ♖g3 ♜d4 5. ♜xd4 e2 6. ♜d6+! (6...cxd6 7. ♙a5, 6... ♖h5
7. ♜h6+ ♖h7 7. ♜h6+! ♖xh6 (7... ♖g8 8. ♙f6 e1 ♜ 9. ♜h8#)
8. ♙g5+ ♖xg5 9.f4+ ♖h5 10. ♖f2\_1-0

**D040/a** and **D040** do not share any thematic similarities.

After 4... ♜b7 5. ♜e1 ♜c7 6. ♜c1 a3 7.d4 a2 8.f5 a1 ♜ 9. ♜xa1 c1 ♜ 10. ♜xc1 ♜xc1 11. ♖g4 ♜c4 12. ♙e3 ♖f7 13. ♖f4 ♖xf6, white can win by 14. ♖e4 ♜c1 15.d5 ♖e7 16. ♖e5 ♜f1 17.f6+ ♖d7 18.d6 ♜f3 19. ♙f4 ♖e8 20. ♙g5 ♖d7 21. ♙h6 ♜f1 22. ♙e3 ♜f3 23. ♙f4 ♖e8 24.d4 ♜f1 25. ♙g3 ♖d7 26.d5 ♜f3 27. ♙f4 ♖e8 28.f7+ ♖xf7 29. ♙g5 +-

**D043 - Reply**

That kind of dual in studies is not generally considered to be a flaw.

**D049 - Reply**

The study is correct. After 3...a4! 4.d8 ♜ c2! 5.d5 e5 6.dxe6 ♜e2 7. ♖d4 ♜d2+, white plays 8. ♖e5! (not 8. ♖c4) ♜xd8 9. ♖xg6 a3 10.e7 ♜d2 11.e8 ♜ a2 and wins, for example ♙xb6, ♜b8 etc.

**D056 - Reply**

In comparison to the declared anticipations the black king plays an active role by restricting the bishop on h7.

**D060 - Reply**

The study is correct. So called "black dual" in thematic try II does not have the influence on white play.

### D061 - Reply

Study **D061/a** was excluded from the tourney due to a defect (*the copy of final award of the JT "Vlasenko-70" was provided to the Director*). Therefore, it should be considered as non-existing and **D061** is original.

---

### D063 - Reply

The main idea of **D063** is that there are two lines which lead exactly to the same position, one with a possible en-passant and another without this possibility. The declared anticipation doesn't show this idea.

---

### D064 - Reply

The mating picture is in no way a central element of the study.

---

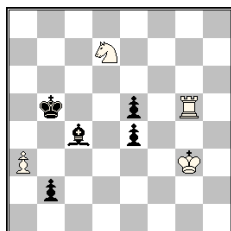
### D066 - Reply

#### D066/a

F. Fischer

L'Echiquier de Paris  
1950

Position provided with replies



1. ♖g6 ♔a5 2. ♜b6 ♙b5 3. a4 ♕xa4 4. ♗c5 + ♕a5 5. ♜xb5+ ♕xb5 6. ♗xe4 ♕b4 7. ♗d2 ♕c3 8. ♗b1+ ♕c2 9. ♗a3+ ½

+ (4+5)

**D066/a** cannot even be considered as partial anticipation of contents of **D066**.

**D066** presents a struggle of white pieces against passed black pawns with clean logic sacrifice of W ♗a3 (vacating square for yet nonexistent knight) with effect of 13 moves foresight.

---

### D070 - Reply

The claim is unfounded. Study **D070** is not partially anticipated by **D070/a**, because contents of **D070** is very different and final position speaks nothing about study quality. Stalemate in **D070** is only the termination of solution, but main idea is losing of white pawn by original maneuver.



## Section E

### **E015 - Reply**

The construction of the problems is different; first moves of solutions have different functions.

---

### **E054 - Reply**

In comparison to **E054/a**, **E054** has following additional elements: two distant self-blocks on guarded squares f5&g5 (B1); two Umnov effects on the same square c5 (W1); exchanged roles of  $W \triangleleft s e4\&f4$  (B2); two unpins on the same square b4 (W2); two anti-dual self-blocks on the same square f3 (B3); no repetition of white moves; no twins.

---

### **E090 - Reply**

The claim is unfounded. None of the mentioned problems (**E090/a** – **E090/e**) are in line with the 10 WCCT theme. Problem **E090** is absolutely original, since it presents for the first time ever a complex of themes: 10 WCCT, cyclic Zilahi, and self-pinning of three different pieces on the same square e4 (same-square mechanism) in response to thematic royal battery play.

---

### **E098 - Reply**

The claim is unfounded. The problems **E098/a** and **E098/b** have different tactical contents. No black battery plays in these problems, that is, 10 WCCT helpmate theme is totally missing. The concept of **E098** consists of an original cyclic interchange of functions of white pieces: W1 – active sacrifice, W2 – defense against thematic king battery check by moves of three different pieces to three different empty squares on the same line, W3 – mate. Problem **E098** is more sophisticated than **E098/a** and **E098/b** in terms of contents, demonstrating a new, hitherto non-existent, unique complex of themes.

---

## Section F

### **F030 – Reply**

**F030** extends the number of thematic mates and number of  $W \triangleleft$  battery checks from 3 to 4.

---

### **F039 - Reply**

There are some technical similarities to the example **F4** from the announcement. However due to the generally limited possibilities to realize the given theme **F039** should be deemed an independent problem.

### F045 - Reply

F045 shows the record use of the matrix, with 5 thematic mates after W♔ battery checks.

## Section G

### G008 - Reply

The claim is unfounded. The similarity of a single move in the course of solution can not be considered as anticipation.

---

### G032 - Reply

The claim is unfounded. G032 has at least two new elements: ♖b7 and ♔b4 only open line for the black king, on the first move black queen plays to become a "target" - it twice opens the lines for bishop and rook and arrives to the square where it is captured on mating move. Thus, the declared anticipation is at most partial.

---

### G048 - Reply

There are some similarities with G008/a (destruction of black piece to allow black king to reach square where it will be mated).

---

### G070 - Reply

G070/a and G070/b look more like comparison examples than anticipations.

---

### G075 - Reply

The claim is unfounded. The only similarity is the initial checks on lateral and diagonal lines, which is a common feature in many problems. Further, the prescribed theme itself being "Invisible Capture", W♔ move to c6 and w♖ move to d6, on the same line, after making a capture cannot be claimed as anticipation. The highlight of G075 is the 'battery formation and mate by the white king in a single move'. The white King has to choose the mating square carefully anticipating the potential 'Take&Make' defence by black, *closing the prospective line of black rook or bishop*. These *virtual black defences and king mates with dual avoidance* are highly original and were never shown before. Further, G075/a has double check mates while G075 has pin-mates.

## Section H

### H001 - Reply

**H001** achieves the theme (switching King & Knight and Rook & Bishop) much faster and with fewer captures than **H001/a**.

---

### H004 - Reply

The claim is unfounded. The given stipulation means that the position has to be reached with *black to play*. Reaching that position in 8 moves with *white to play* does not fulfil the stipulation 'PG.8.5'.

---

### H017 - Reply

**H017** contains mutual rook sacrifices. The main advantage is white's indirect ♔-selfpin by long castling and B♔'s immediate unpin.

---

### H019 - Reply

The claim is unfounded. **H019** and **H019/a** contain different solutions (**H019/a** is not less than 5 moves longer), different positions, different cycles.

In **H019** there are exchanges: ♔d1 → ♙c1 → ♚e1 → ♘g1 → ♖h1 → ♙f1 → ♔d1, ♖a1 ↔ ♘b1, and Phoenix. In **H019/a**: ♘g1 → ♖a1 → ♘b1 → ♔d1 → ♙c1 → ♚e1 → ♙♘g1, ♖h1 ↔ ♙f1.

---

### H022 - Reply

As the side to play is the position is determines by stipulation, the solution in 13,0 moves should not be acceptable.

---

### H026 – Director's comment

The misprint correction of cycle's record in claims is only mentioned to provide unity of descriptions. It has no influence on the content of the problem.

## H029 – Director’s comment

Multiple comparison examples with simultaneous exchanges ♖d1↔ ♖d8 and ♜e1↔ ♜e8 easily available in databases were not presented in claims document by mistake.

### Reply

**H029** is clearly not anticipated by **H010/a**, since in **H010/a** white and black kings do not exchange their positions. **H010/b** does show the same theme as **H029**, however the play is completely different. The main points in **H029** are three exchanges of places of both kings which are not realized in **H010/b**. **H029** should therefore not be considered as anticipated.

---

## H045 - Reply

The final position of black pieces at the 8th row in **H045/a** is only optically the same as in **H045**. **H045** shows two 4-fold exchanges, where all black pieces move two squares to the right, which is not the case in **H045/a**. In **H045/a** ♖b8 came from a8, ♜c8 came from h8, ♘a8 came from b8 and ♘d8 came from g8. In both **H045** and **H060** problems ♖b8 came from h8, ♜c8 came from a8, ♘a8 came from g8 and ♘d8 came from b8. The thematic cycles are different in **H045/a**: exchange of ♖a8 and ♘b8 and cycle ♜c8 → ♜e8 → ♘g8 → ♘d8 → ♜f8 → ♖h8 → ♜c8, which are not equal to the shift of all pieces two squares right. Therefore, **H045** is not anticipated by **H045/a**, since the exchanges, presented in these two problems, are completely different.

---

## H058 - Reply

**H058** presents the theme by exchanging homebase places of five white and five black pieces. The mentioned **H010/a** and **H010/b** are not anticipations as they have a different set of thematic pieces (including no knights) and different play. In line with this, the latter one (**H010/b**) has apparently not been considered to be an anticipation of the earlier one (**H010/a**).

---

## H060 - Reply

There is only optical similarity of diagram position between **H045/a** and both **H045** and **H060**. Actually, black rooks and black knights are not the same. In **H045/a** ♖b8 came from a8, ♜c8 came from h8, ♘a8 came from b8 and ♘d8 came from g8. In both **H045** and **H060** problems ♖b8 came from h8, ♜c8 came from a8, ♘a8 came from g8 and ♘d8 came from b8. The thematic cycles are different in **H045/a**: exchange of ♖a8 and ♘b8 and cycle ♜c8 → ♜e8 → ♘g8 → ♘d8 → ♜f8 → ♖h8 → ♜c8, which are not equal to the shift of all pieces two squares right.