



WORLD FEDERATION  
FOR CHESS COMPOSITION

11<sup>th</sup> WORLD CHESS  
COMPOSITION TOURNAMENT

FIRST CIRCULAR LETTER  
LIST OF REGISTERED COUNTRIES  
ERRATA IN THE ANNOUNCEMENT  
QUESTIONS & ANSWERS

September 2020

List of registered countries (38): Argentina, Armenia, Azerbaijan, Belarus, Belgium, Brazil, Canada, Croatia, Czech Republic, Denmark, Finland, France, Georgia, Germany, Great Britain, Greece, Hungary, India, Israel, Italy, Japan, Lithuania, Moldova, Mongolia, Morocco, Netherlands, North Macedonia, Poland, Romania, Russia, Serbia, Slovakia, Slovenia, Spain, Sweden, Switzerland, Ukraine, United States.

Errata in the announcement document:

1. Correct source of the example D4: Sergiy Didukh & Sergiy Ivanovich Tkachenko, 1. Prize Olimpiya Dünyasi 2012.
2. Correct source of the example F1: Aleksandr Feoktistov & Valery Gurov, 12. Place 6. WCCT 1998-2000.

### Questions and Answers

A1) Q: The same white unit plays in try and in the solution. In the try one black unit occupies the thematic square, while in the solution another black unit occupies the thematic square. Is it thematic?

A: It is not thematic. In each phase, there must be at least two black units occupying the thematic square.

A2) Q: May the two (as a minimum) required black units being shared to two different tries or must at least two black units appear in each thematic phase?

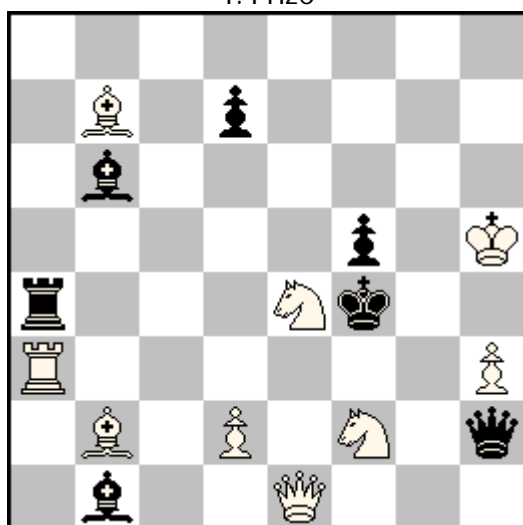
A: Refer to the previous Q&A.

A3) Q: Does set play count as a thematic phase?

A: No, set play does not (in fact, cannot) count as a thematic phase.

A4) Q: Is the following twomover thematic?

Jacques Rotenberg  
Thèmes-64 1983  
1. Prize



†2

(9+7) C+

1.Sd6? [2.Qe5,Be5,Rf3†] 1...Be4!,Re4!

1.Sg3? [2.Qe5,Be5,Rf3,Se2†] 1...Re4!

1.Sg5? [2.Qe5,Be5,Rf3†] 1...Be4!

1.Sc5? [2.Qe5,Be5,Rf3,Qe3†] 1...Re4!

1.Sf6? [2.Qe5,Be5,Rf3,Sd5†] 1...Be4!

1.Sc3! [2.Se2,Sd5†]

1...Be4 2.Se2†, 1...Re4 2.Sd5†

(1...Bd3 2.S×d3†, 1...Rd4 2.Qe3†,

1...Q×h3+ 2.S×h3†, 1...Kg3 2.Se2†)

A: This twomover is not thematic. In the solution, the moves 1...Be4 and 1...Re4 are not true defences, they only separate the two threats (the black moves as variations have no weakening effect.)

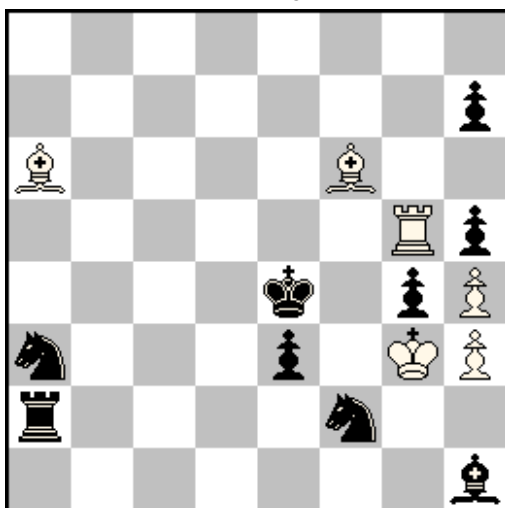
C1) Q: Let us consider a position in which black move A later refutes the original plan (as described in the definition). At the same time, it enables another white continuation (i.e. A is not a refutation). Is it thematic?

A: Yes, it is thematic. This is allowed by the following statement in the theme definition: "In the solution White overcomes this obstacle by any means." It is not required to present the theme in logical form.

C2) Q: In our opinion, also the example C4 is thematic. The weak move A is Sd3, and the preliminary sequence of moves is B = Sc4 and Ra5. Is this interpretation correct?

A: Yes, this interpretation is acceptable. The solution to example C4 may be written as below, which means that the problem is indeed thematic.

Hans Peter Rehm  
Stephan Eisert  
64 1977  
1. Prize



†8

(6+9) C+

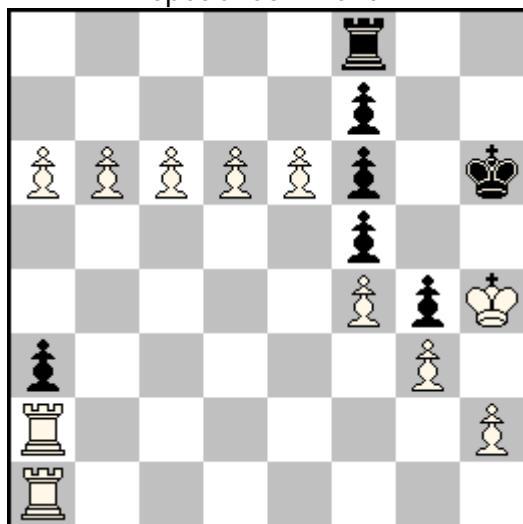
Example C4

1.Bc3? [2.Re5#] Sd3? A 2.Bb7†  
but 1...Sc4! B1 2.Bxc4 Ra5! B2 3.Rxa5 Sd3 A 4.Bd5+ Kf5!

1.Re5+! Kd4 2.Rxh5+ Ke4 3.Bc3 Sc4 4.Bxc4 Ra5 5.Rxa5 Sd3  
6.Bd5+ Kf5 7.hxg4+ Kg6 8.Ra6†

D1) Q: All white pawns on the 6th rank promote to rook. Promotions to queen do not work, for example 2.e8=Q? Kg6+! 3.Qxh8 stalemate. Are all promotions to rook (2nd, 4th, 6th, 8th, 10th move) thematic?

Mikhail Zinar  
Shakhmaty (Riga) TT 1985  
Special Commend



+ (11+7)

1.e7 Rh8! 2.e8=R! Rxe8 3.d7 Rh8! 4.d8=R! Rxd8  
5.c7 Rh8! 6.c8=R! Rxc8 7.b7 Rh8! 8.b8=R! Rxb8  
9.a7 Rh8! 10.a8=R! Rxa8 11.Rxa3 Rh8 12.Ra8 Rh7  
13.Rg8 +-

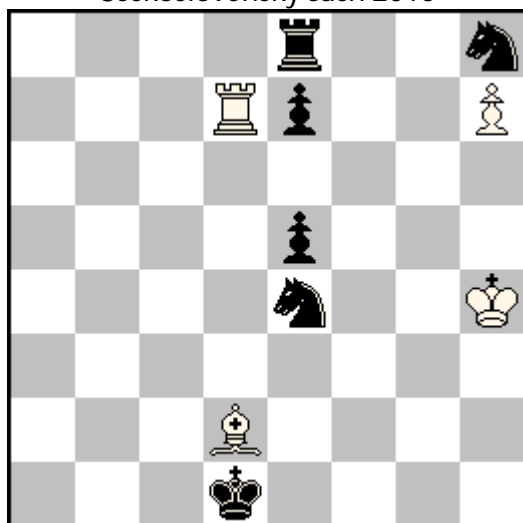
Answer: Yes, they are thematic.

D2) Q: In a try a white pawn promotes to piece X, and in the solution the same pawn promotes to piece Y. Are such promotion-sacrifices thematic?

A: Refer to the previous Q&A.

D3) Q: Is the move 6.Bc3+ thematic?

Pavel Arestov & Michal Hlinka  
Československý šach 2015



+ (4+6)

Try: 6.Bf4+? Ke1! 7.Bxe5 Sg6+ 8.Kh5 Sxe5 9.Rxe7  
Rxe7 10.h8=Q Ke2 = ZZ

Solution: 6.Bc3+! Ke2 7.Bxe5 Sg6+ 8.Kh5 Sxe5  
9.Rxe7 Rxe7 10.h8=Q +- ZZ

Answer: No, it is not thematic. The moves Bc3/Bf4+ by the white bishop are not sacrifices, as Black is never able to capture the bishop there.

E1) Q: A set play shows the required delayed capture of a white unit, but is shorter than 3,5 moves. Is such a set play considered thematic?

A: No, it is not thematic as it is shorter than 3,5 moves.

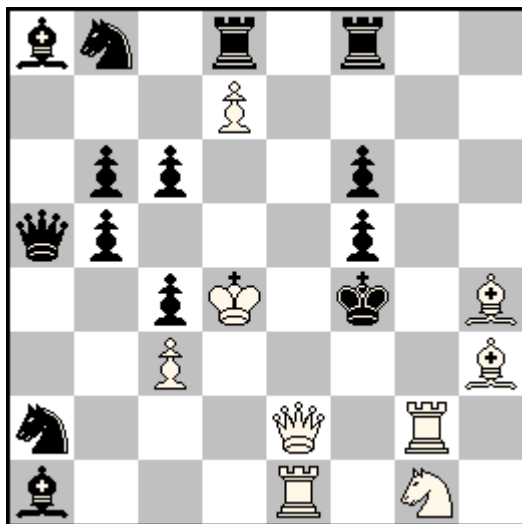
F1) Q: Is the variation 1...Sxd7 2.Bg5+ f×g5 3.Qe5+ S×e5‡ thematic?

The aim of 1...Sxd7 is guarding the e5 square against the threat. The battery itself has no effect in the black defensive strategy (1...Sxd7, 2...S×e5 would refute even without Rd8).

Frank Richter

Dedicated to Kieler Problemschachrunde

Die Schwalbe 2016



s‡3

(9+14) C+

1.Qe6! [2.Re4+ f×e4 3.Qe5+ f×e5‡]

1...S×c3 2.Rg4+ f×g4 3.Re4+ S×e4‡

1...Sxd7 2.Bg5+ f×g5 3.Qe5+ S×e5‡

1...b4 2.Q×f5+ Q×f5 3.Re4+ Q×e4‡

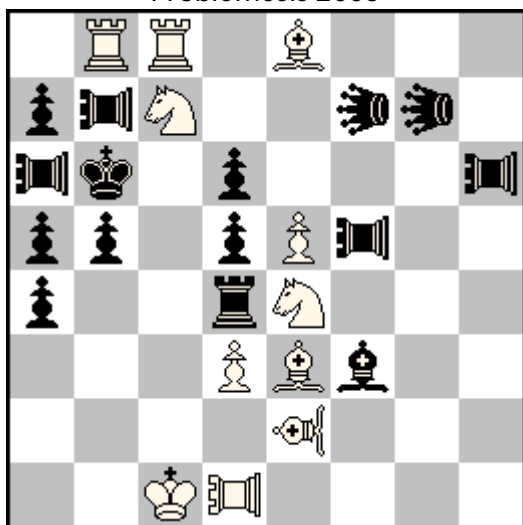
A: Yes, it is thematic.

F2) Q: Should the direct battery, created by Black on the first move, be standard? Or may also another type of battery be considered, for example half-battery or a masked battery? (which of course in the solution will turn into a standard battery and can give check to the white king when White tries to continue with the threat.)

A: If Black creates the half-battery (third-battery, etc.) by playing the rear piece on the line is not in accordance with the theme requirement "On his first move Black creates a battery aimed at the white king". The real battery appears only when one of the forward pieces leaves the battery line (that is, not on the first move as required by the theme.) However if the half-battery already exists in the diagram position and Black creates the battery by playing one of the forward pieces on his first move, it is thematic. The presence of white pieces on the battery line (masked battery) is allowed.

G1) Q: Is the below problem thematic?

Jean-Marc Loustau  
 Reto Aschwanden  
 Problemesis 2005



♠3 (11+15) C+

♠=Lion

♠=Bishop-Lion

♠♠=Rook-Lion

1...Lld7 2.Sxd5+ Lldxd5 a,RLxd5 3.Bxd4♠ A  
 1...RLf1+ 2.RLb1+ RLxb1 b,Llb3 3.Sxd5♠ B  
 1...Llf4+ 2.Bxd4+ Llfxd4 c,Llgxd4 3.RLb1♠ C

1.e6! [2.Sa8+ RLxa8 3.Rc6♠]  
 1...Lld7 2.Sxd5+ Lldxd5 a,Llfxd5 3.RLb1♠ C  
 1...RLf1+ 2.RLb1+ RLxb1 b,Llb2 3.Bxd4♠ A  
 1...Llf4+ 2.Bxd4+ Lldxd4 c,RLc5 3.Sxd5♠ B

A: The setplay is not thematic. The solution is (the thematic defensive lines are deactivated by the key.)