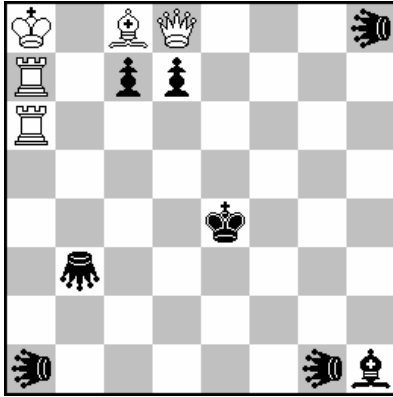


For WCCI -2019-2021 section G - FAIRIES 6 problems

№1. PETKO A.PETKOV
TZUICA- 2021 T.T.
1st prize



hs#3 (5+8)

(C+ WinChloe 3,52, Py 4,87)

b) Gb3→g4

c) Gb3→c5

♙ = Grasshopper

♚ = Lion

Solutions:

- a) 1.Ra2! Kf3 2.R7a4! Gg3 3.Qf8+! Ke3#!
b) 1.Ra3! Gd4 2.R7a5! Gf4 3.Qe8+! Kd4#!
c) 1.Ra4+! Kd5 2.R7a6! Ge5 3.Qg8+! Kc5#!

Thematic complex:

1. Here we have **THREE-TIME WHITE BRISTOL R-R BY THE PINNED WHITE ROOKS Ra7/Ra6**, + **PELLE** on the vertical "a" and **THREE-TIME PEELE-MOVES OF THE PINNED WHITE QUEEN** on the 8th horizon!

2. For the first time, a record (task) with a total of **9 Pelle-moves in the three phases** was demonstrated here!

4. The mates are realized after play of the K/B battery: the bK opens the black Bh1, but at the same time the bK creates an indirect black anti-battery using the black Llg1 with goal to keep a7 square!

5. Also interesting are the three blocks of the black king, demonstrated by the black Grasshopper, who at the same time guards the field "b8".

6. IT IS PARADOX THAT IN THIS PROBLEM WE HAVE MODEL - MATES WITH 4 PINNED WHITE FIGURES ON THE BOARD AND 9 PELLE-MOVES!

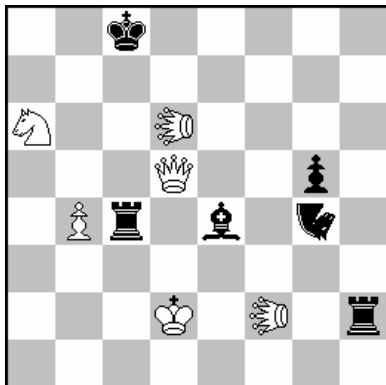
(Control notation : White : Ka8 Qd8 Ra7a6 Bc8 (5), Black : Ke4 Bh1 Pc7d7 Gb3 Llh8 LI a1 Llg1(8) - HS#3 b) Gb3→g4, c) Gb3→c5)

№2. PETKO A.PETKOV

Julia's Fairies 2019(I)

1st prize

In memoriam my father Andon Petkov



hs#3,5 (6+6)

(C+ WinChloe 3,52, Py 4,87)

b) ♠g5→e7

c) ♠g5→a5

♞=Nightrider

♞=LEO

Solutions:

a) 1...Na1 2.LEe6 Bc2 3.Ke3 g4 4.LEf5+ Bxf5#

♞ ♞ battery

b) 1...Bb1 2.LEc7 Rc2+ 3.Kd3 e5 4.LEc5+ Rxc5#

♞ ♞ battery

c) 1...Rc1 2.LEd8 Nc2 3.Kc3 a4 4.LEf8+ Nxf8#

♞ ♞ battery

Thematic complex:

1.Cyclic black Indian theme realized with Rook, Nightrider and Bishop who create the batteries B/N (a), R/B(b) and N/R(c) with play of the black battery-pieces on the same field - c2 + **Cyclic interchange of functions!**

2.Active white king, unpin of the LEf2 with subsequent opening of the black Rook's line.

3.The white LEd6 opens a line for the white Queen and creates hurdles for the subsequent action - CREATION OF WHITE ANTI - BATTERIES G/G in which the rear anti-battery piece(LEf2) opens simultaneously line for Rh2.

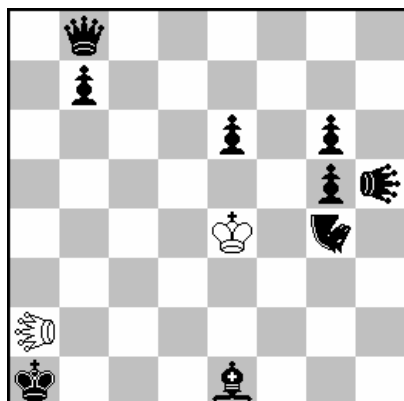
4.Meredith.

5.Such a complex is presented for the first time without using of Fairy condition!

(Control notation : **White** : Kd2 Qd5 Sa6 LEd6 LEf2 Pb4 (6), **Black** : Kc8 Rc4, Rh2, Be4, Ng4,Pg4 (6) - HS#3.5 b) Pg5→ e7, c) Pg5→ a5)

№3. PETKO A.PETKOV
StrateGems 2021

published in No 96(X-XII,2021)



h#2 (2+9)

(C+ WinChloe 3,52, Py 4,87)

b) Ke4→d7

c) Pb7→c2

Take & Make

Immun Chess Rex Inclusive

♞=Nightrider

♚=Lion

♙=LEO

Solutions:

a) 1.Qe5! LEf2 2.Nxf2 - f7 Kxe5 - b2 # - *sacrifice of Q, N closes LI*

b) 1.Nc6! LEa5 2.LIxa5 - d8 Kxc6 - a2 # - *sacrifice of N, LI closes Q*

c) 1.LIf5! LEb2 2.Qxb2 - f6 Kxf5-b1# - *sacrifice of LI, Q closes N*

Thematic complex:

1. **Cyclical change of the functions of three black pieces - Q, N, LI**, which control the square "e8". This control must be eliminated so that the same field e8 of the cited black figures cannot be blocked.

2. **Three sacrifices of the white LEO on f2, a5, b2** with the idea to attract the concealing black figures, respectively on N♞7, LId8, Qf6 on the zited fields through captures of the Take & Make type.

3. **Three MODEL MATES**, which the white king gives to the black king, playing on the fields b2 (a position), a2 (b), b1 (c).

4. **White Minimal** (only with white C and LI) - Meredith!

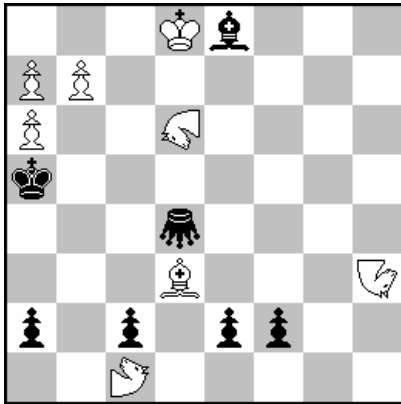
(Control notation : White: Ke4, LEa2 (2), Black: Ka1 Qb8, Ng4, LIh5, Be1, Pb7, Pe6, Bg5, Pg6 (9) - H#2 Take&Make, Immun RI; b) Ke4→ d7, c) Pb7→ c2)

№4. PETKO A.PETKOV

TZUICA- 2020

1st prize

(section B- Fairy)



hs#3,5 2 solutions (8+7)
Circe + Anti-Andernach

(C+ WinChloe 3,52, Py 4,87)

♣ = Grasshopper (G)
♞ = Chamel - Hopper (CH)
♝ = Camel (CA)
♞ = Nightrider (N)

Solutions:

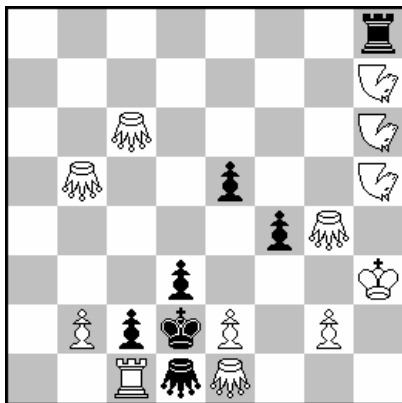
I. 1...e1=R=w 2.b8=B=b f2xe1=CH [+wRa1] 3.Rb1=b Bc6=w
(3...Bb5?) 4.a7xb8=CA [+bBf8] + Rxb8 #.
II. 1...f1=Q=w 2.a8=S=b e2xf1=N [+wQd1] 3.Qf3=b Bb5=w
(3...Bc6?) 4.b7xa8=G [+bSg8] + Qxa8 #

Thematic complex

1. **Reciprocal play(promotions) with change of functions of two duets of pieces:** White duet: w.Pa7,Pb7; Black duet: Pe2, Pf2.
2. **Double Schnoebelen** after the successive reciprocal promotions & captures of the white pawns and the captures (with mates) on the fields a8 and b8.
3. **Reciprocal promotions "A la Schnoebelen" of the black pawns.**
4. **Thematic Anti-dual tries of the black Be8 (3...Bb5? - I sol. and 3...Bc6? - II sol), which closes the black Rook on b5(I) and the black Queen on c6(II).**
5. **SUPER AUW with 8 PROMOTIONS AND MODEL MATES!!**
(This is the first problem in the world from the HS# genre, in which the SUPER AUW with 8 promotions is realized with 15 figures only!)

(Control notation : White: Kd8, Bd3, Nh3, CAc1, CHd6, Pa6, Pa7, Pb7 (8); Black: Ka5, Be8, Gd4, Pa2,Pc2,Pe2,Pf2 (7) - HS#3.5, 2 solutions, Circe+ Anti-Andernach

№5. PETKO A.PETKOV
17° T.T. PHENIX - 2021
1st prize



HS#2,5 3 solutions (12+7)

Anti-Andernach

(C+ WinChloe 3,52, Py 4,87)

Breton adverse

 =Nightrider

 = Grasshopper

SOLUTIONS:

I. 1...Gd1-f3=w 2.Nh6-d4=b Nd4xf3[-wGb5] 3.Nh7xf3 + Rh8xh5[-wNf3] #.

Dual-avoidance tries: 2...(Nd4xf3[-wGc6]? and 2...(Nd4xf3[-wGe1]?)

II. 1...Gd1-b3=w 2.Nh5-d7=b Nd7xb3[-wGc6] 3.Nh6xb3 + Rh8xh7[-wNb3] #

Dual-avoidance tries: 2...(Nd4xf3[-wGe1]? and 2...(Nd4xf3[-wGb5]?)

III. 1...Gd1-f1=w 2.Nh7-d5=b Nd5xf1[-wGe1] 3.Nh5xf1 + Rh8xh6[-wNf1] #

Dual-avoidance tries: 2...(Nd4xf3[-wGb5]? and 2...(Nd4xf3[-wGc6]?)

THEMATICAL COMPLEX

1. Cyclic interchange of functions in play of three white Nightriders with following cyclic order: first N changes its color and captures w.G; second N captures the first N and gives "check"; third N is captured from the b.R and the second N is eliminated etc. With other words: here we have combination of changes of colors, and multiple thematic captures with Annihilation/ Breton adverse and Anti- Andernach elements.

2. For the first time here is demonstrated a cycle of Breton adverse elimination of three white Grasshoppers: Gb5, Gc6, Ge1 with dual-avoidance tries!

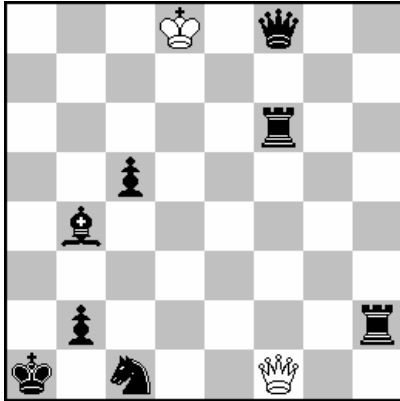
3. As a "conductor" of this play is the black Gd1 which demonstrates change of color & sacrifice.

4. MODEL MATES!

(Control notation : White: Kh3, Rc1, Nh5, Nh6,Nh7, Gb5,Gc6,Ge1,Gg4, Pb2,Pe2,Pg2 (12); Black: Kd2,Rh8,Gd1,Pc2,Pd3,Pe5,Pf4(7)- HS#2.5 3 sol., Anti_Andernach + Breton adverse.

№6.PETKO A.PETKOV

Münchner Märchen-Turnier 2020
1st Prize



h#2 (2+8)
2 solutions
Point Reflection

(C+ WinChloe 3,52, Py 4,87)

The Award is published in
Mpk-Blätter
Sonderausgabe, Januar 2021

Solutions:

I.1.Rh4 Qe1! 2.Sg5+ Ka5#.
II.1.Rh3 Kc8! 2.Sc3+ Ka6#.

THEMATICAL COMPLEX:

1.The first black moves have a Preliminary Point Reflection effect - they prepare the future mechanisms **Ka5 <-> Rh4 (I sol.)** and **Ka6 <-> Rh3 (II sol.)** in which the white king gets the role of a Rook and the bRook - of a King.

2. Thematic formation of two Point-Reflection Ecto - batteries **Kd8/Qe1 (I sol.)** and **Kc8/Qf1 (II sol.)** combined with unpins of the black Sc1.

3. After the moves 1 ... Qe1 (I sol.) and 1 ... Kc8 (II sol.), the **black Sc1 is unpinned** and follows a play of the **black Sc1/Qf8 ecto - battery** with cross - checks and pre-opening of the first horizontal for the white Queen.

4. **MODEL MATES WITH DOUBLE CHECKS** after the play of the **Kd8/Qe1** and **Kc8/Qf1 Ecto-batteries** . using the activation of the white king in the R - function.

5. Each half - move of the problem is thematic! Therefore - **WE HAVE HERE THE MAXIMAL NUMBER OF 8 THEMATIC HALF-MOVES!**

6.For the first time this difficult complex is presented in the form "Minimal" (whie K+Q only) & "**Gravure**" - with only 10 pieces!

(Control notation : **White:** Kd8, Qf1 (2); **Black:** Ka1,Qf8,Rf6,Rh2,Bb4,Sc1,Pb2, Pc5 (8)- H#2 2 solutions, Point Reflection.

Author: PETKO A.PETKOV, Bulgaria,1504 Sofia, Janko Sakazov 38, wh. W
E-Mail address: ppetkov2702@gmail.com

