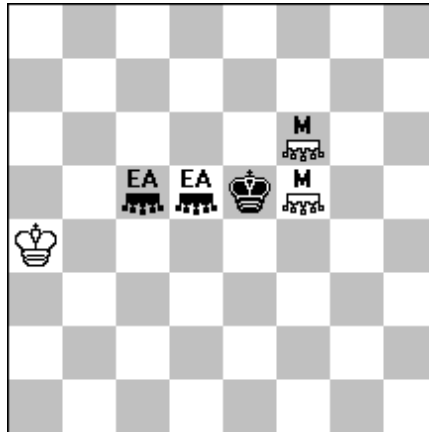


Entry N.1

Daniel Novomesky

F1300 Probleemblad Nr.2 april-juni 2020



H#5.5 FunctionaryChess 0.2.1... C+ (3+3)

Moose f5,f6; Eagle c5,d5

b) Twin move a4 d1

**Solutions:**

a)

1...Mf5-d4 2.EAd5-e6 Mf6-d5 3.EAe6-e4 Md5-b4 4.Ke5-d5 Md4-a3 5.Kd5-c4 Mb4-d3 6.EAe4-c3 Md3-b2#

1...Mf6-e4 2.EAc5-d4 Me4-c3 3.EAd4-a5 Ka4-b4 4.EAa5-c5 Mf5-d4 5.EAc5-d3 Md4-c6 6.Ke5-d4 Mc3-b5#

b) wKa4-->d1

1...Mf5-e7 2.EAd5-c1 Kd1-c2 3.EAc1-b2 Mf6-d7 4.EAb2-d6 Me7-d5 5.Ke5-d4 Md5-c7+ 6.Kd4-c4 Md7-b6#

1...Mf5-d6 2.EAd5-c1+ Kd1-d2 3.EAc5-e6 Md6-f5 4.EAc1-e1 Mf5-e7 5.EAe1-d5 Mf6-d7+ 6.Ke5-d4 Me7-c6#

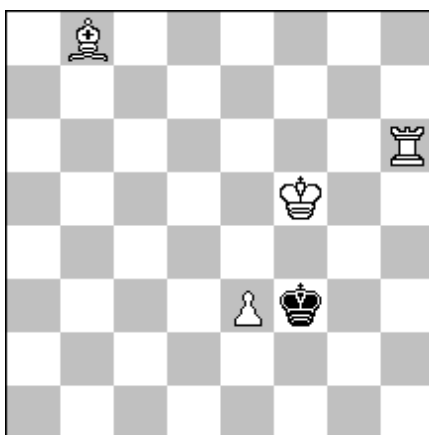
**Two pairs of double chameleon echo finals: each pair consists of two absolutely identical mates, but each pair has a different structure.**

Computer tested C+ Popeye v.4.83

Entry N.2

Daniel Novomesky

1660 Julia's Fairies October 2021



H#2 PointReflection C+ (4+1)

a) Dia

b) wPe3-->e4

c) wPe3-->b3

d) wPe3-->g1

**Solutions:**

a)

1.Kf3-e2 Rh6-d6 + 2.Ke2-d2 e3-e7 #

b) wPe3-->e4

1.Kf3-e3 Rh6-h3 + 2.Ke3-d4 e4-e5 #

c) wPe3-->b3

1.Kf3-f2 Rh6-g6 2.Kf2-g2 b3-b7 #

d) wPe3-->g1

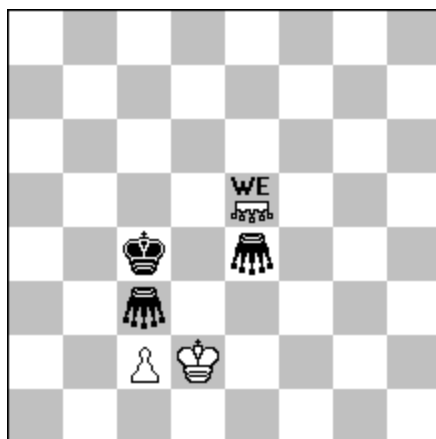
1.Kf3-g2 Rh6-h2 + 2.Kg2-g3 g1-b6 #

Computer tested C+ Popeye 4.87

Entry N.3

**Daniel Novomesky**

G243 SuperProblem October 2019



H#4 3.1..... C+ (3+3)

Wazir e5, Grasshoppers c3,e4

**Solutions:**

1.Ge1 Kc1 2.Kc3 WEd5 3.Gb4 WEd4 4.Gc4 WEd3#

1.Gb1 WEe4 2.Gc5 c3 3.Gf5 Kc2 4.Gb5 WE-d4#

1.Kc5 Kd3 2.Gc6 c4 3.Ge6 Kc3 4.Gb6 WEd5#

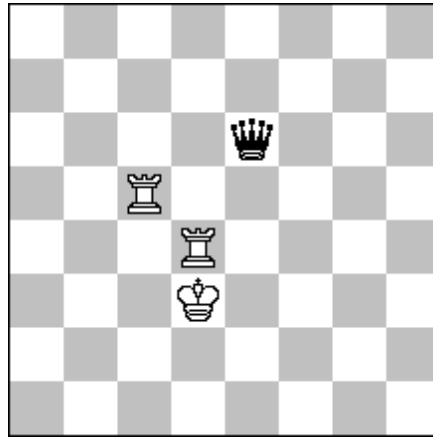
**Triple chameleon echo.**

Computer tested C+ Popeye v.4.83

Entry N.4

Daniel Novomesky

G257 SuperProblem December 2019



HS#3 Maximummer Koeko 2.1.1.. C+ (3+1)

- b) Twin move c5 c1
- c) Twin move d4 a3
- d) Twin move d3 b5

**Solutions:**

a)

1.Rd4-d6 Qe6-e2 2.Kd3-d4 Qe2-e7 3.Kd4-d5 Qe7-e4 #

1.Rd4-e4 Qe6-b6 2.Re4-b4 Qb6-d6 3.Kd3-c4 Qd6-d3 #

b) wRc5-->c1

1.Kd3-d2 Qe6-e1 + 2.Kd2-d3 Qe1-e5 3.Rc1-c3 Qe5-e2 #

1.Rd4-d5 Qe6-e2 2.Kd3-d4 Qe2-e6 3.Rc1-c4 Qe6-e3 #

c) wRd4-->a3

1.Rc5-c2 Qe6-a2 2.Ra3-b3 Qa2-a4 3.Kd3-c3 Qa4-d4 #

1.Rc5-c4 Qe6-e2 + 2.Kd3-c3 Qe2-a2 3.Ra3-b3 Qa2-d2 #

d) wKd3-->b5

1.Rc5-c6 Qe6-e3 2.Rc6-c3 Qe3-e5 3.Kb5-c4 Qe5-b5 #

1.Rc5-e5 Qe6-a6 2.Kb5-c5 Qa6-f6 3.Kc5-d5 Qf6-c6 #

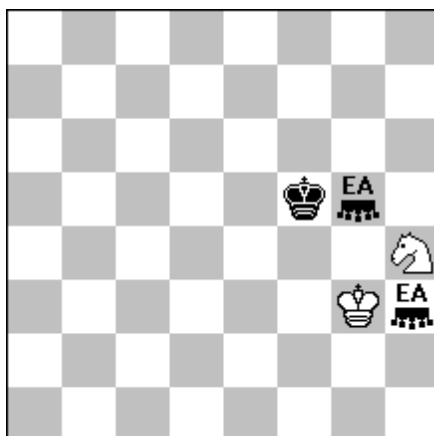
**4 times twins, 4 times 2 Solutions, 8 times Echo**

Computer tested C+ Popeye v.4.83

Entry N.5

**Daniel Novomesky**

G266 SuperProblem January 2020



H#9.5 0.2.1.. C+ (2+3)

FunctionaryChess

Eagle h3,g5

**Solutions:**

1...Kg3-f2 2.Kf5-g4 Sh4-f3 3.EAg5-h4 Kf2-e1 4.EAh4-d2 Sf3-h2 5.Kg4-g3 Sh2-f1 6.EAd2-f2 + Ke1-e2  
7.Kg3-g2 Sf1-e3 + 8.Kg2-h1 Se3-f1 9.EAf2-e3 Ke2-f2 10.EAe3-h2 Sf1-g3 #

1...Kg3-h2 2.EAh3-g2 Kh2-g3 3.Kf5-g6 Kg3-f4 4.EAg2-f5 + Kf4-g3 5.EAf5-f7 Kg3-g4 + 6.Kg6-g7 Sh4-f5  
7.EAg5-h7 Kg4-g5 8.Kg7-h8 Kg5-g6 9.EAh7-f8 Sf5-h6 10.EAf7-g8 Sh6-f7 #

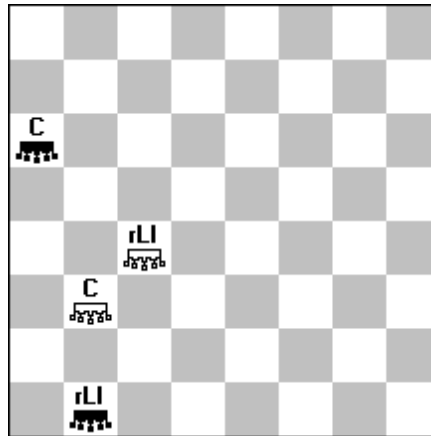
**Twice echo. Mates on the corner h1, h8.**

Computer tested C+ Popeye v.4.83

Entry N.6

Daniel Novomesky

FB 1829 StrateGems July-September 2019 SG87



hs==5 4.1.1.... C+ (2+2)

Royal c4, c1

Koeko

Lions c4,c1

Cardinal b3,a6

**Solutions:**

- 1.rLIc4-a2 rLIb1-b4 2.rLIa2-a7 Ca6-c4 3.Cb3-a5 + rLIb4-d4 4.Ca5-b4 Cc4-b3 5.Cb4-c5 + Cb3-b6 ==  
1.Cb3-a1 Ca6-c3 2.rLIc4-c1 + rLIb1-d1 3.rLIc1-c4 Cc3-b4 4.rLIc4-a4 Cb4-a2 5.Ca1-c2 + Ca2-b3 ==  
1.Cb3-c2 Ca6-b4 2.rLIc4-a4 rLIb1-d3 3.Cc2-b3 Cb4-a5 + 4.rLIa4-a6 Ca5-a4 5.Cb3-c4 + Ca4-b5 ==  
1.Cb3-b6 Ca6-c3 2.Cb6-d4 Cc3-b2 3.rLIc4-e4 Cb2-f3 + 4.Cd4-f2 Cf3-e2 5.Cf2-c2 + Ce2-d3 ==

**Helpself double stalemate. The final position (exactly fourfold echo without twin) includes pin of both cardinals on the line segment between two royal lions.**

Computer tested C+ Popeye 4.79