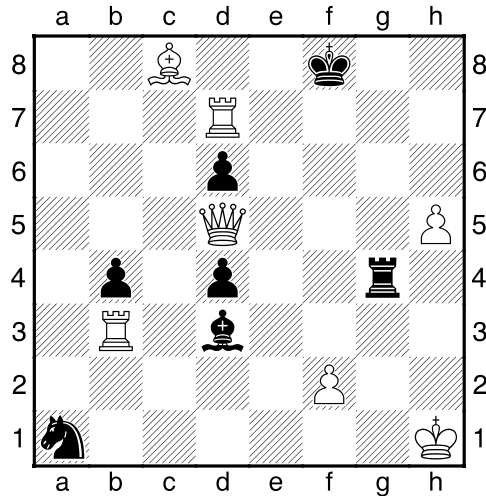


617335- Podoleni, str. Sfânta Treime, nr. 57, jud. Neamț
 e-mail: mihaiu.cioflanca@yahoo.com, Mihaiu Cioflâncă (România)

WCCI 2019-2021, Section G, Fairy
 The diagram number 1

GAUDIUM, nr. 231, 30 September 2020 (2076)



Ser-h11= (7+7)

White: Kh1, Qd5, Rb3, Rd7, Bc8, pf2, ph5 (7)

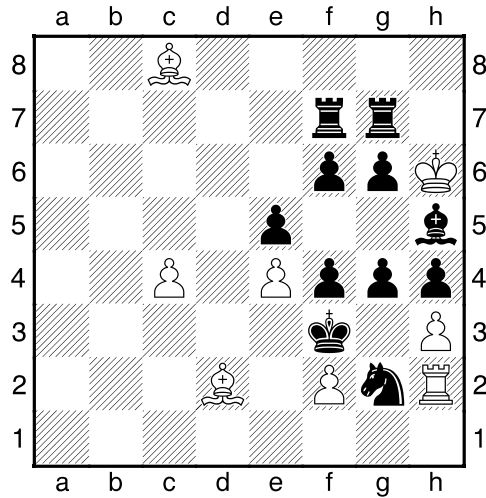
Black : Kf8, Rg4, Bd3, Sa1, pb4, pd4, pd6 (7)

1.Sc2 2.Se3 3.Sf5 4.Se7 5.Kg7 6.Kh6 7.Sf5 8.Kxh5 9.Kh4 10.Kh3 11.Sh4 Rh7=

Comment: Serial moves to protect the black KING from a rescue lane.

WCCI 2019-2021, Section G, Fairy
The diagram number 2

PHENIX, nr. 310-311, septembre-octobre 2020 (8859)



hs#4.5 2 solutions (8+11)

White: Kh6, Rh2, Bc8, Bd2, pc4, pe4, pf2, ph3 (8)

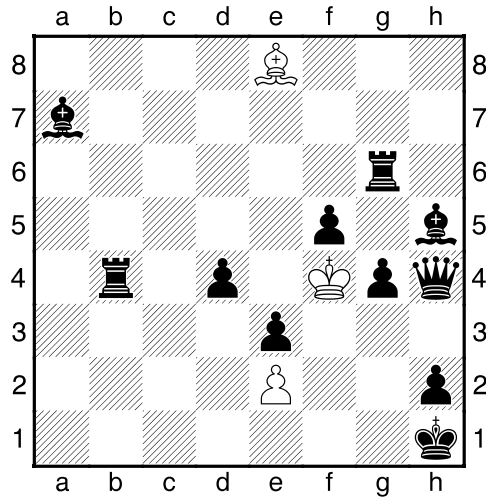
Black : Kf3, Rf7, Rg7, Bh5, Sg2, pe5, pf4, pf6, pg4, pg6, ph4 (11)

1...Kxe4 2.hxg4 Bxg4 3.Be3 Rh7+ 4.Kxg6 f3 5.Bf5+ Bxf5#

1...f5 2.Bxf5 Rg8 3.Bxg6 Rf5 4.hxg4 Kxg4 5.Bxh5+ Rxh5#

WCCI 2019-2021, Section G, Fairy
The diagram number 3

PROBLEM PARADISE, nr. 96, October-December 2021 (H1245)



hs#5 2 solutions (3+11)

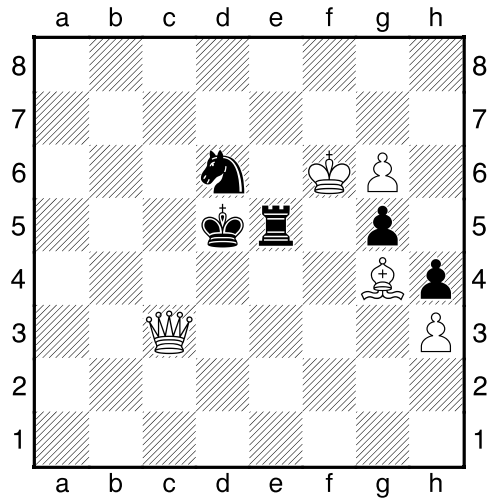
White: Kf4, Be8, pe2 (3)

Black : Kh1, Qh4, Rb3, Rg6, Ba7, Bh5, pd4, pe3, pf5, pg4, ph2 (11)

1.Ba4 Rb5 2.Bd1 d3 3.exd3 e2 4.Bxe2 Bg1 5.Bf3+ gxf3#

1.Bd7 Qe1 2.Bxf5 g3 3.Bh3 Rg4+ 4.Kf3 Qg1 5.Bg2+ Qxg2#

WCCI 2019-2021, Section G, Fairy
 The diagram number 4
 SACHOVA SKLADBA, nr. 150, II, 2021 (2485)



hs=4.5 2 solutions (5+5)

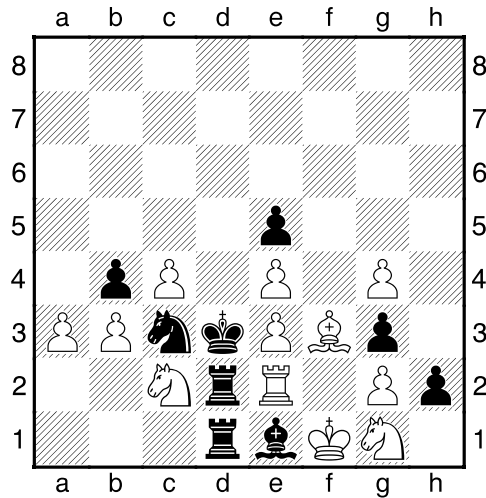
White: Kf6, Qc3, Bg4, pg6, ph3 (5)

Black : Kd5, Re5, Sd6, pg5, ph4 (5)

1...Ke4 2.Bf5+ Nxf5 3.Kxg5 Ng7+ 4.Kxh4 Kf4 5.Qf3+ Kxf3=

1...Rf5+ 2.Ke7 Rf7+ 3.Kd8 Rg7 4.Be6+ Kxe6 5.Qe5+ Kxe5=

WCCI 2019-2021, Section G, Fairy
 The diagram number 5
 SACHMATIJA, nr. 4m, 2019 (4020)



Ser-s#8 2 solutions (12+9)

White: Kf1, Re2, Bf3, Sc2, Sg1, pa3, pb3, pc4, pe3, pe4, pg2, pg4 (12)

Black : Kd3, Rd1, Rd2, Be1, Sc3, pb4, pe5, pg3, ph2 (9)

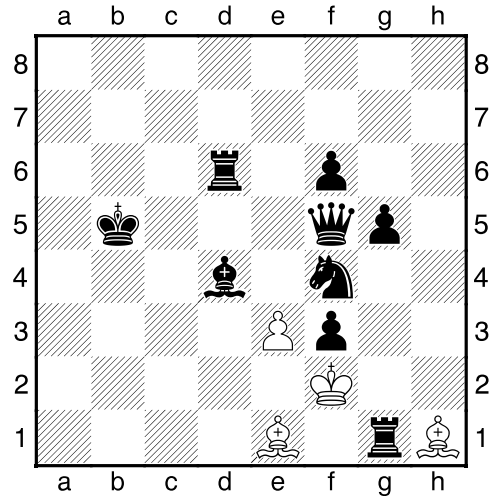
1.axb4 2.Sa3 3.Sb1 4.Sxd2 5.Sb1 6.Rc2 7.Se2 8.Rxc3+ Bxc3#

1.Rf2 2.Se2 3.Sxg3 4.Sf5 5.g3 6.Rxh2 7.Kg1 8.Sxe1+ Rxe1#

Comment: A different connection between R and B, in a limited space and complicated maneuvers. The dual forced me to increase the number of white pieces.

WCCI 2019-2021, Section G, Fairy
The diagram number 6

PROBLEM-SKAK, nr. 51, the cover, (2488)



Ser-#9 2 solutions (4+9)

White: Kf2, Be1, Bh1, pe3 (4)

Black : Kb5, Qf5, Rd6, Rg1, Bd4, Sf4, pf3, pf6, pg5 (9)

1.Kxf3 2.exf4 3.Ke2 4.fxg5 5.gxf6 6.f7 7.f8Q 8.Qxd6 9.Qc6#

1.Bxf3 2.Bd5 3.Kf3 4.e4 5.e5 6.exd6 7.d7 8.d8Q 9.Qa5#

Comment: Two routes chosen for the white pawn for transformation and the realization of two distinct mates-echou.