

WCCI 2019 - 2021 FAIRIES

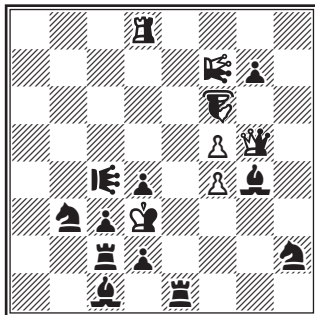
№ 1

Lev Grolman

Приз (1 место)

Шахматная композиция 2019

Задача №G23



Грольман Лев Владимирович

Россия, 420102, г. Казань, а/я 60

e-mail: levgrolman@gmail.com

C+ WinChloe 3.47

h#2,5 2 solutions 2+11+5n

AntiCirce+Circe

♖♗ - Lion (LI, nLI)

♜ - Nao (nNA)

1....nRa8! 2. nQ:f4 (nQd8, f2) nNA:h2 (nNAh8, Sb8)

3. nLlh7+! nQ:h8 (nQd1, nNAh1)#

1....nRh8! 2. nQ:f5 (nQd8, f2) nLI:b3 (nLIb8, Sg8)

3. nNAh5+! nQ:b8 (nQd1, nLIb1)#

An original fairy strategy in two harmonic phases with an interchange of functions of neutral pieces of Lion and Nao with a formation of mates of two checks to the black king from their complex activity. The neutral rook is found in the opposite corners of the chessboard in the isolation beyond the barrier of the black knight overlap in the final stage of both solutions.

WCCI 2019 - 2021 FAIRIES

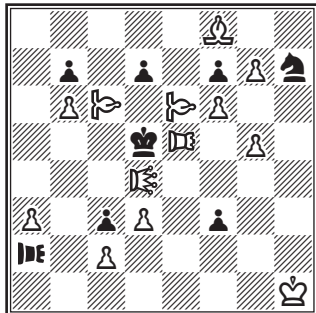
№ 4

Lev Grolman

1 - 3 приз

SuperProblem 2020

Задача №G319



Грольман Лев Владимирович
 Россия, 420102, г. Казань, а/я 60
 e-mail: levgrolman@gmail.com

C+ WinChloe 3.47

h#2* 4 solutions 13+8
 Patrol chess

 - Lion (LI)

 - Rook-Lion (RLI)

 - Bishop-Lion (BLI)

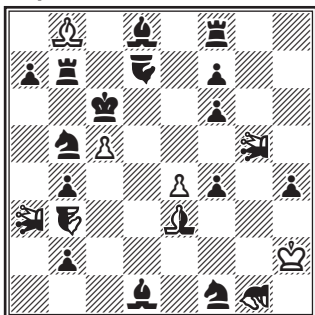
- | | | | |
|----------|--------|----------|---------|
| 1. ... | BLIe4 | 2.RLI f2 | BLI g2# |
| | A | | B |
| 1.RLI e2 | BLI b3 | 2.RLI e6 | LId1# |
| | B | | C |
| 1.RLI d2 | Ll a1 | 2.RLI d4 | BLI a8# |
| | C | | D |
| 1.RLI a6 | BLI e8 | 2.RLI c6 | RLI h5# |
| | D | | A |
| 1.RLI a5 | RLI e8 | 2.RLI e5 | BLI g8# |

The four-phase cyclic quartet of the identical solutions of the fairy pieces was supplemented with the phase of the illusory game. There are four uniform mates when playing the formed mating tandems when changing the functions of the white fairy pieces A, B, C, D at the closed cycle, when each of them was in the role of the front mating and the rear patrol piece. The black rook Lion blocks the fields near the black king that are left by the white fairy pieces by turns in «leave away - come» style in four phases. It is also involved in the illusory game as a blocking and a locking piece. The nine - way plot of the black rook Lion.

№ 5
 Lev Grolman
 1 приз
 SuperProblem 2021

WCCI 2019 - 2021 FAIRIES

Задача №G369



Грольман Лев Владимирович
 Россия, 420102, г. Казань, а/я 60
 e-mail: levgrolman@gmail.com

C+ WinChloe 3.47

h#2,5 4+15+5n
 Anti-Circe type Cheylan
 b)Pf4→e2, c)Pf7→f5, d)Pf6→c2
 neutral pieces:
 a3, b3, e3, g1, g5
 ♞♞ - Nightrider (N, nN)

♁ - Leo (nLE)
 ♂ - Rose (nRO)

- a) 1. ...nNh6! 2.nLE:c5(nLEc1) nRO:c1(nROc8) 3.nLEg2! nRO:h6(nROh8)#
- b) 1. ...nLEa6! 2.nNb:c5(nNc1) nLE:c1(nLEc8) 3.nROa1! nLE:a6(nLEa8)#
- c) 1. ...nROe6! 2.nLEg:c5(nLEc1) nLE:c1(nLEc8) 3.nNa5! nLE:e6(nLEe8)#
- d) 1. ...nLEg6! 2.nRO:c5(nROc1) nN:c1(nNc8) 3.nLEa4! nN:g6(nNg8)#

The four-phase fairy strategy of the game with a cyclic change of the functions of four fairy neutral pieces A, B, C, D with a change of their sequence of moves and with a mutual double taking of these pieces in each phase. The mating tandems are made of two pairs of the fairy neutral pieces in the course of the cyclic game. The each pair mates twice with a different sequence of its formation. The cyclogram is an original one in all phases of the middle of the game at three points of the same file.

The mates are correct in the fairy performance in the final positions of all twins on the condition of AntiCirce that the neutral fairy pieces beat only one field, on which the black king is located.

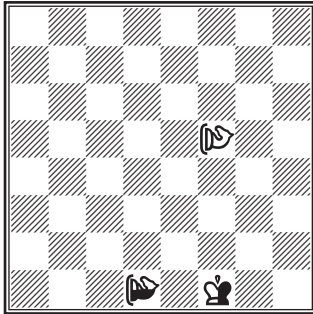
Harmonic, classic complex.

WCCI 2019 - 2021 FAIRIES

№ 6

Lev Grolman
PAT a MAT 2021

Задача №1368



Грольман Лев Владимирович
Россия, 420102, г. Казань, а/я 60
e-mail: levgrolman@gmail.com

C+ Poreye 4.85

h#2 **1+0+2n**

b) nGld1→h4, c)nKf1→c7

Take&Make, CirceParrain

neutral pieces: f1,d1

  - Giraffe (Gl, nGl)

a) 1. nGlc5 Gle1 2.nK:e1-d5 nK:c5 - g6(Glh2)#

b) 1. nGld3 Glg1 2.nK:g1-c2 nK:d3- c7(Glg6)#

c) 1. nGle5 Glb6 2.nK:b6 - f5 nK:e5 - f1(Glb2)#

Royal dance with two giraffes. Tactical analogy of three-piece fairytale and two twins with identical three-phase play, the same combined effects under two fairytale conditions, and ideal mirror mates. In «c» twin neutral king is repositioned on a square where it has been previously chekmated. King's escapade through almost the whole board is finished on «f1» square of its original position.