

**ENTRIES FOR WORLD CHAMPIONSHIP IN  
COMPOSING FOR INDIVIDUALS  
(WCCI) 2019-21**

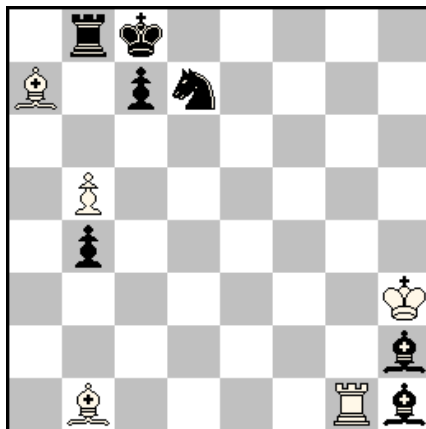
**(G: FAIRIES SECTION)**

**FROM S. K. BALASUBRAMANIAN (INDIA)**

**(E-Mail: [skbala\\_bh2002@yahoo.co.in](mailto:skbala_bh2002@yahoo.co.in))**

Note:

1. Problems have been arranged in chronological order of their publication.
2. All Problems have been computer tested using Popeye Version 4.85.
3. Theme/Gist of the theme for formal tourneys have also been given wherever applicable.

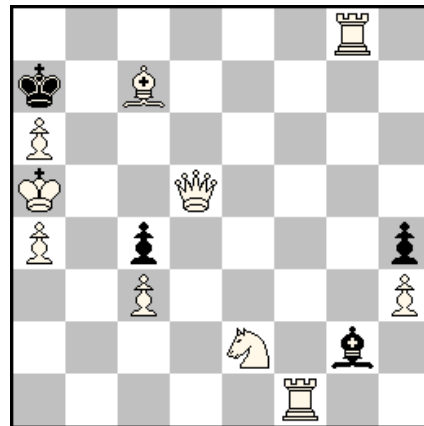
**ENTRY No.1****S. K. Balasubramanian (India)**Quick Composing Thematic Tourney  
**TT-220 : "Four pieces - four corners"****2<sup>nd</sup> Honorary Mention**Award Date : **05.06.2019****(C+ Popeye 4.85)****(5+7)****HS#5**

1.Bb1-f5 **Bh1-a8** 2.**Rg1-a1** Kc8-b7 3.Kh3-g2 **Rb8-h8**  
 4.**Kg2-h1** Sd7-f8 5.Bf5-c8+ Kb7\*c8 #

**Theme :** In the same variation (solution) of real play of problem, four different pieces execute the moves in four different corners with or without capture. Promotions on corner squares are non-thematic on their own but these promotions may precede thematic captures on corner squares.

**Features:**

- Line opening by both white & black (W1, B2, B4, B5).
- Line Closing by black (B2, B4).
- Formation & firing of black's active royal battery with switchback effect.
- Model Mate.
- Meredith.

**ENTRY No.2****S. K. Balasubramanian (India)****Quick Composing Thematic Tourney****TT-244: "Monochrome sacrifices"****3rd PRIZE****Award Date: 05.12.2020****(C+ Popeye 4.85) (10+4)****HS#4****(a) Diagram (b) wSe2 → e1**

- (a) 1. **Bg3** (A) (*Sg3?*) **h\*g3** 2. **Rf2** (B) **g\*f2** 3. **Sg1** (C) **f\*g1=Q** 4. **Qc5+**(D) **Q\*c5 #**  
 (b) 1. **Qd3** (D) (*Sd3?*) **c\*d3** 2. **Sc2** (C) **d\*c2** 3. **Rb1** (B) **c\*b1=Q** 4. **Bb6+** (A) **Q\*b6 #**

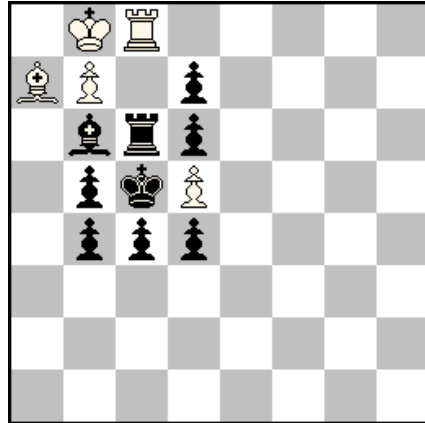
**Theme : hs#3-7:** : in the same solution of helpselfmate, the same side actively sacrifices at least three pieces (not Pawns) and an opposite side accepts these sacrifices (immediately or later). Sacrificial move can be with capture by Pawn (but not officer).

**Features:**

- **FOUR** thematic sacrifices in each solution.
- **Dual Avoidance** on W1.
- Double **Reciprocal Change** of white sacrifices, between Q & B (A/D), Between R & S (B/C).
- **Zilahi**.

**ENTRY No.3****S. K. Balasubramanian (India)**Published in "*The Problemist*" Mar. 2021

(Prob. No. F3639)



(C+ Popye 4.77)

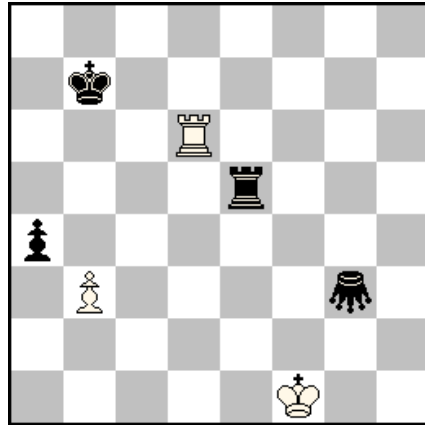
(5+9)

**H#2 (2 Solutions)****Take & Make chess, Kobulkings****1.Bb6\*a7-b6[b8=rB] Rc8\*c6-c8[c5=rR]+ 2.Bb6-c7+ rBb8-a7 #****1.Rc6\*c8-c6[b8=rR] Ba7\*b6-a7[c5=rB]+ 2.Rc6-b6 rRb8-c8 #****Features :**

- Null moves by both black & white on B1 & W1 with T&M effect.
- Mates by white King after conversion.
- Pin mates.

**ENTRY No.4****S. K. Balasubramanian (India)****“Juliafairies.com” JF-2021-II**

(Prob No. 1641)

**6<sup>th</sup> Honorable Mention**

(c+ Popeye 4.85)

(3+4)

**G3 = Grasshopper****HS#3\*\* (3 Solutions)****(Take & Make + Kobul Kings + Madrasi (Rex Inclusive))**

1...Gxd6-f6 [f1=rR] 2.rRxf6-d4 [b7=rG] Ra5 3.rRb4+ Rb5 #

1...Gxd6-d2 [f1=rR] 2.rRd1 Re2 3.rRxd2-f2 [b7=rG] rGb2 #

**1.Kf2(tempo) Gxd6-f6 [f2=rR] (Gxd6-d2?) 2.rRxf6-d4 [b7=rG] Ra5(R~?) 3.rRb4+ Rb5 #****1.Kg1(tempo) Gxd6-d2 [g1=rR] (Gxd6-f6?) 2.rRd1 Re2 3.rRxd2-f2 [b7=rG] rGb2 #****1.Rc6 Kxc6-c4(Kxc6-c3?) [f1=rR] 2.rRa1 Ga3 3.rRxa3-a5 [c4=rG] rGa2 #**

- **wK tempo** in two solutions **eliminate one each of the set play mates**.
- Converted **wrR** is **mated by THREE different mates, all by converted Royal black Grasshopper**, First **ONE** is a **forced mate** and the other **Two** are **zz mates**.
- Dual avoidance.
- Miniature.