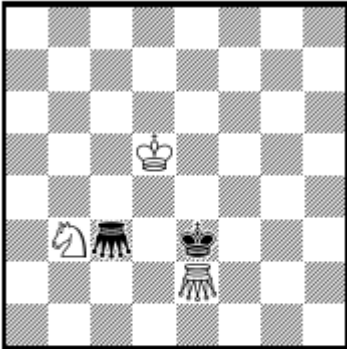


1. WCCI 2019-21. Niels Danstrup

DieSchwalbe HEFT 310, BAND XXXV – August 2021

18676 Niels Danstrup
DK-Aarhus



h#5 (3+2)

- b) ♜e2 → f2
- c) ferner ♞b3 → e6
- d) ferner ♜c3 → a7
- ♞♞ = Grasshüpfer

It is a HOTF

It is a h#5 with 2 Grasshoppers

There are 2 solutions with Knight-Mate (direct) and 2 solutions with Grasshopper-Mate (anti-battery)

In connection with HOTF there is an additional facility: There is a connection between solution A and C as well as B and D: You just have to rotate and move the white pieces in the mated picture.

There are echo chameleons

The 40 (2*4*5) individual moves are all different.

Solutions:

A)

- 1.Ke3-f4 Sb3-d4 2.Kf4-g5 Kd5-e4 3.Gc3-e5 Ke4-f3 4.Ge5-h5 Kf3-g2 5.Kg5-h4 Sd4-f3 #

B) wGe2-->f2

- 1.Gc3-a3 Gf2-d4 2.Ke3-d3 Gd4-d6 3.Kd3-c3 Kd5-c6 4.Kc3-b4 Kc6-b6 5.Kb4-a4 Sb3-c5 #

C) wGe2-->f2 wSb3-->e6

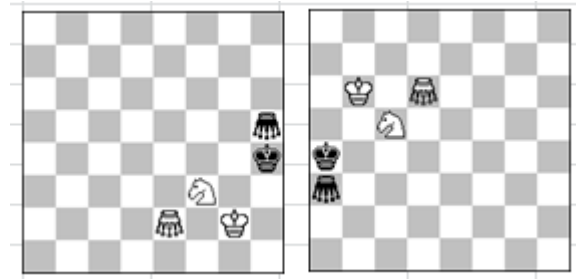
- 1.Ke3-f3 Kd5-e5 2.Kf3-g3 Ke5-f5 3.Gc3-h3 Gf2-f6 4.Kg3-h4 Kf5-f4 5.Gh3-h5 Se6-g5 #

D) wGe2-->f2 wSb3-->e6 sGc3-->a7

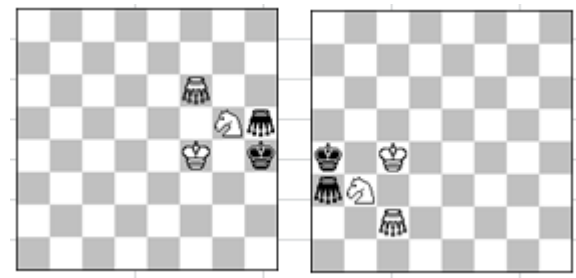
- 1.Ke3-d2 Gf2-c2 2.Kd2-c3 Kd5-c5 3.Kc3-b3 Se6-d4 + 4.Kb3-a4 Kc5-c4 5.Ga7-a3 Sd4-b3 #

End-positions

A and B



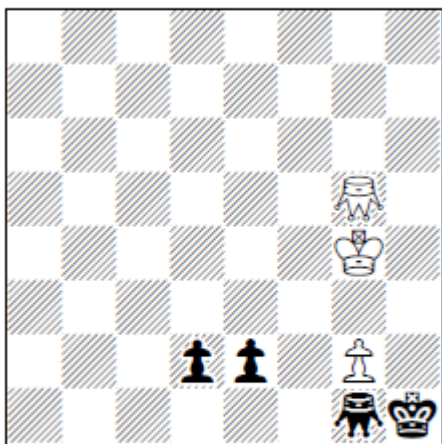
C and D



2. WCCI 2019-21. Niels Danstrup

The Problemist, Vol 28 No 2 MARCH 2021

F3642 Niels Danstrup
(Denmark)



H#3 3 solutions
(b) Gg5→c4 2 solutions
♞♟ Grasshoppers

It is a helpmate in 3 moves with two Grasshoppers

It is a twin and

- There are promotions respectively to Queen, Knight, Rook and Bishop, Grasshopper
- an AUW including Grasshopper-promotion
- The final mate-positions are different, and the Grasshopper who mates are on 5 different places: Gc6, Gd5, Ge4, Gf3 and Gf1
- All the promotions are on e1 (from the Pawn on e2)

Solutions:

A)

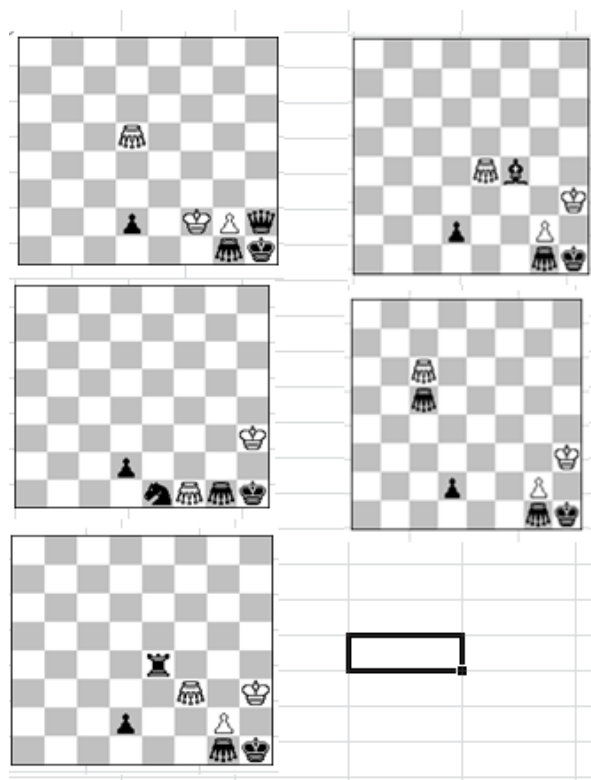
1. e2-e1=D Kg4-f3 2. De1-e5 Gg5-d5 3. De5-h2 Kf3-f2 #
1. e2-e1=S Kg4-h3 2. Se1*g2 Gg5-c1+ 3. Sg2-e1 Gc1-f1 #
1. e2-e1=T Kg4-h3 2. Te1-e5 Gg5-d5+ 3. Te5-e4 Gd5-f3 #

B) wGg5-->c4

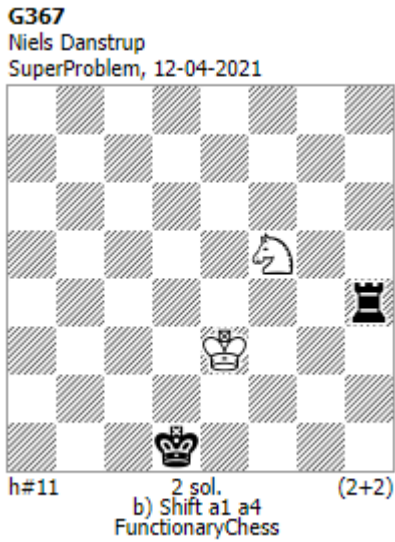
1. e2-e1=L Gc4-h4 2. Le1-g3 Kg4-h3 3. Lg3-f4 Gh4-e4 #
1. e2-e1=G Kg4-h4 2. Ge1-c3 Kh4-h3 3. Gc3-c5 Gc4-c6 #

A)

B)



3. WCCI 2019-21. Niels Danstrup
SuperProblem 12-04-2021



It is a h#11 and
BeamtenSchach/FunctionaryChess

- It is a twin with 2*2 solutions
- The twin occurs by moving the position 3 rows up
- The 88 single moves are all different.
- In other words: no similar moves
- The mate positions are in the four corners of the board (Four echo-chameleon mates)

PDB-number: P1389016

Solutions:

a) **diagram:**

1.Rh4-e4+ Ke3-f3 2.Re4-e5 Sf5-e3+ 3.Kd1-e1
Se3-g2 4.Ke1-f1 Sg2-e3+ 5.Kf1-g1 Se3-g4
6.Re5-e4 Sg4-f2 7.Re4-e2 Sf2-h3 8.Re2-e3+
Kf3-g3 9.Kg1-h1 Kg3-f2 10.Re3-e2+ Kf2-f1
11.Re2-h2 Sh3-f2#

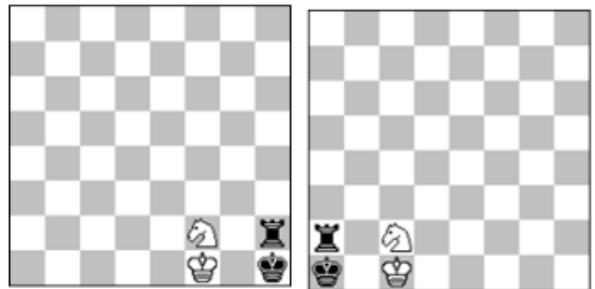
1.Rh4-f4 Sf5-d4 2.Rf4-e4+ Ke3-d3 3.Re4-f4
Sd4-e2 4.Rf4-c4 Se2-c3+ 5.Kd1-c1 Sc3-a2
6.Kc1-b1 Sa2-c3+ 7.Kb1-a1 Sc3-b5 8.Rc4-
d4+ Kd3-c2 9.Rd4-d2+ Kc2-c1 10.Rd2-b2
Sb5-a3 11.Rb2-a2 Sa3-c2#

b) **shift a1 a4:**

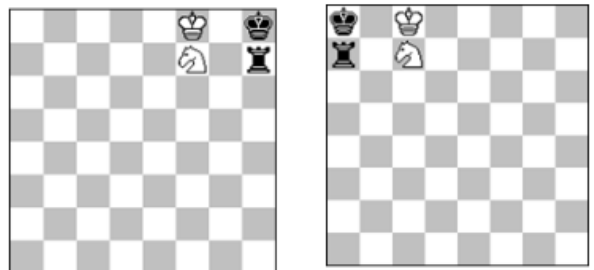
1.Rh7-e7+ Ke6-d6 2.Re7-e6+ Kd6-d7 3.Re6-
e8 Sf8-e6+ 4.Kd4-e5 Se6-f4 5.Re8-g8 Sf4-
g6+ 6.Ke5-f6 Sg6-e7 7.Rg8-g7 Se7-g8+
8.Kf6-f7 Sg8-h6 9.Kf7-g8 Kd7-e7 10.Kg8-h8
Ke7-f8 11.Rg7-h7 Sh6-f7#

1.Rh7-f7 Sf8-d7 2.Rf7-f6+ Ke6-e7 3.Rf6-d6
Sd7-c5 4.Rd6-b6 Sc5-e6+ 5.Kd4-d5 Se6-c7
6.Kd5-c6 Sc7-d5 7.Rb6-b7 Sd5-b4+ 8.Kc6-c7
Sb4-a6 9.Kc7-b8 Ke7-d7 10.Kb8-a8 Kd7-c8
11.Rb7-a7 Sa6-c7#

The mate positions are:

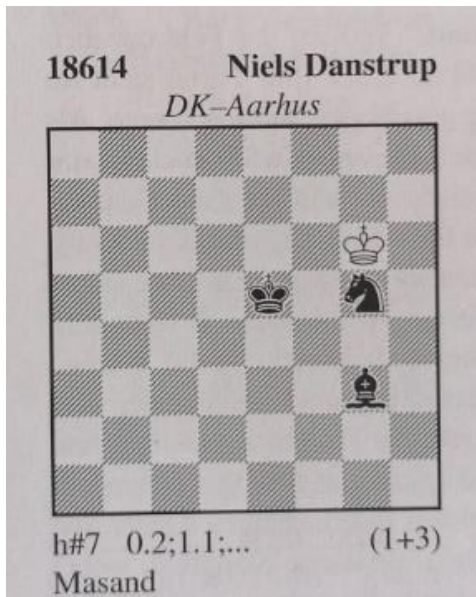


b)



4. WCCI 2019-21. Niels Danstrup

Die Schwalbe, HEFT 309. BAND XXXV. Juni 2021

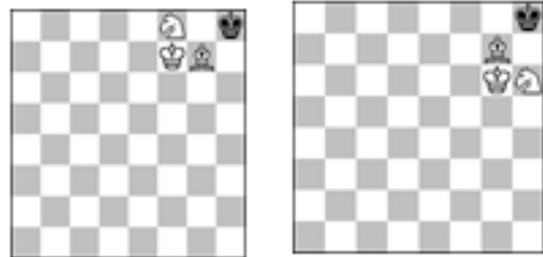


Solutions:

1... Kg6-g7 2. Lg3-f4 Kg7-g8 3. Ke5-f6
Kg8-f8 4. Sg5-e6[f4=w] + Kf8-e8 5. Kf6-g7
Lf4-h6 + 6. Kg7-h8 Ke8-f7 7. Se6-f8 Lh6-
g7[f8=w] #

1... Kg6-h6 2. Ke5-f6 Kh6-h5 3. Lg3-d6
Kh5-h6 4. Sg5-f7[d6=w] + Kh6-h5 5. Kf6-g7
Ld6-f8 + 6. Kg7-h8 Kh5-g6 7. Sf7-h6 Lf8-
g7[h6=w] #

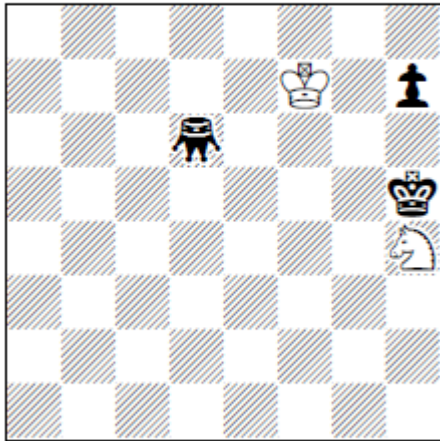
The mate-positions are:



- It is a twin and h#6,5 and Masand
- The two end positions are mirrored in a1-h8 diagonal
- Both black pieces change color

5. WCCI 2019-21. Niels Danstrup
The Problemist, Vol 28 No 4 JULY 2021

F3669 Niels Danstrup
(Denmark)



H#4 ♜ G (b) wK→e4
(c) = (b) + Sh4→f1

It is a helpmate in 4 moves with one Grasshopper

It is a trilling,

- with echo chameleon, and
- In the three endpositions the black pawn
 - stands on h7,
 - has moved from h7 to h6,
 - has moved from h7 to h5
- Different play in the three solutions. For example in solution a), the black king goes to h6 more than once - also with switzback.

Solutions:

a) 1.Kh5-h6 Kf7-f6 2.Gd6-g6 Kf6-f5 3.Kh6-g7 Kf5-g4 4.Kg7-h6 Sh4-f5 #

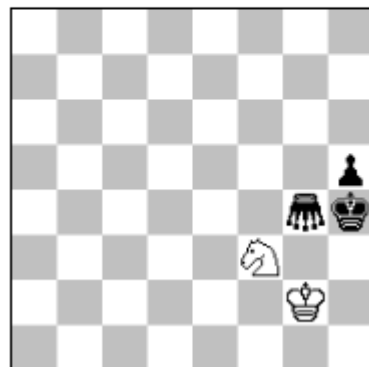
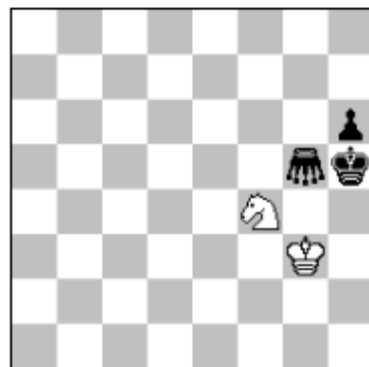
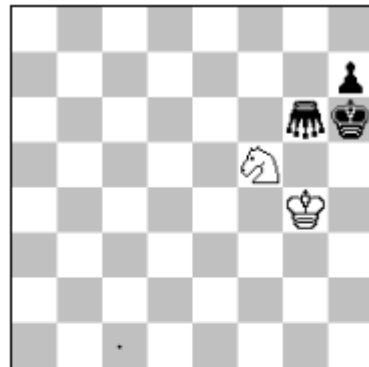
b) wKf7-->e4

1.h7-h6 Ke4-f4 2.Gd6-g3 Sh4-g6 3.Gg3-g7 Kf4-g3 4.Gg7-g5 Sg6-f4 #

c) wKf7-->e4 wSh4-->f1

1.Kh5-h4 Sf1-d2 2.Gd6-d1 Ke4-f3 3.Gd1-g4 Kf3-g2 4.h7-h5 Sd2-f3 #

The end positions are:

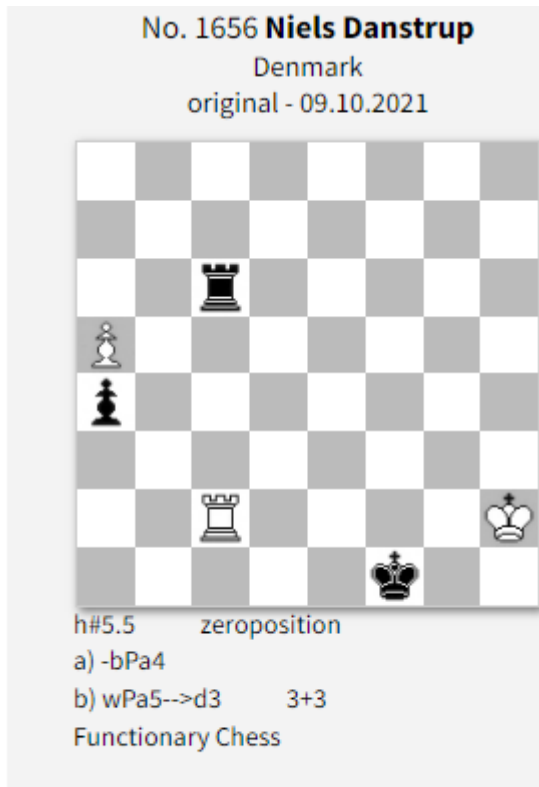


6. WCCI 2019-21. Niels Danstrup

Original Fairy problems

JF-2021-II:

01.07.2021 - 31.12.2021



It is a h#5,5 and
BeamtenSchach/FunctionaryChess

In the first solution the black Rook helps
the white Pawn up the board.

In the second solution it is opposite: The
white Rook helps the Black pawn down
the board.

Link to the problem:

<https://juliasfairies.com/problems/no-1656/>

Solutions:

a) 1...Rc3 2.Rc5 a6 3.Rc6 a7 4.Rc7 a8=Q
5.Rc8 Re3 6.Re8 Qg2#

b) 1...Rc4 2.a3 Rc3 3.a2 Rc2 4.Rc4 Rb2
5.Rc2+ Kg3 6.Re2 Rb1#

The mate-positions are:

