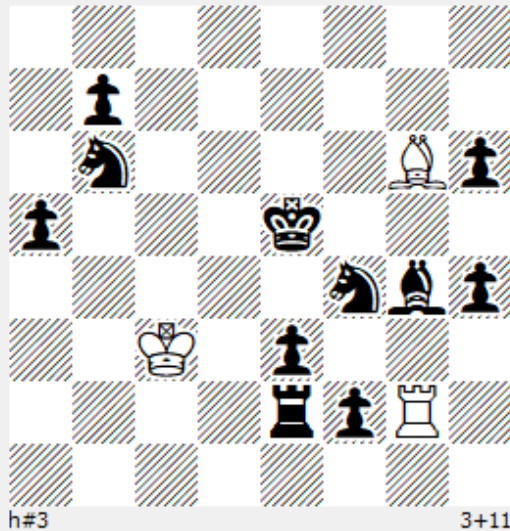


8/1p6/1n4Bp/p3k3/5nbp/2K1p3/4rpR1/8



ParrainCirce

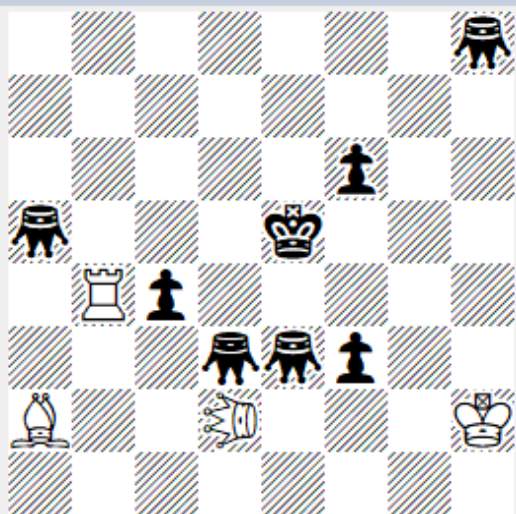
Решение:

Тюнин Александр Дмитриевич  
(Tyunin Aleksandr Dm.)  
Julia s Faries 2019

Tema Zilahi  
№1

1.Re2-d2 Rg2\*f2  
2.Rd2-d6 [+bPf6] Bg6-f5  
3.e3\*f2 Bf5-e6 [+wRe3] #  
1.Sf4\*g2 Bg6-e8 [+wRe4] +  
2.Ke5-d5 Be8-c6 +  
3.b7\*c6 Re4-e5 [+wBc7] #  
1.Sf4\*g6 Kc3-b3 [+wBf6] +  
2.Ke5-e4 Rg2\*g4 +  
3.Ke4-d3 [+bBf3] Rg4-d4 #  
1.Bg4-f3 Bg6-e4  
2.Ke5\*e4 Rg2-g3 [+wBe5]  
3.h4\*g3 Be5-c7 [+wRe5] #

7(q2)/8/5p2/(q2)3k3/1Rp5/3(q2)(q2)p2/B2(Q3)3K/8



h#2

4+8

e3, d3, a5, h8: Grasshopper  
d2: Leo

Решение:

Тюнин Александр Дмитриевич  
(Tyunin Aleksandr Dm.)  
Julia s Faries 2019

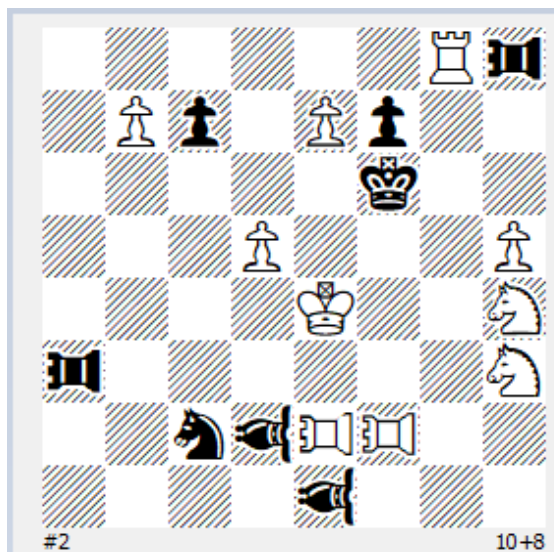
AB -BA

№2

- 1.Gd3-b5 LEd2\*a5 +
- 2.Ke5-f4 Rb4\*c4 # (A)
- 1.Ga5-f5 Rb4\*c4 (A)
- 2.Ke5-e6 Rc4-e4 #
- 1.Ke5-e6 Rb4-b5
- 2.Ge3-e7 Ba2\*c4 # (B)
- 1.Ke5-e4 Ba2\*c4 (B)
- 2.Gh8-e5 Bc4-e6 #



6R(r3)/1Pp1Pp2/5k2/3P3P/4K2N/(r3)6N/2n(b3)(R3)(R3)2/4(b3)3



Try

f2, e2, a3, h8: Pao  
e1, d2: Vao

Решение:

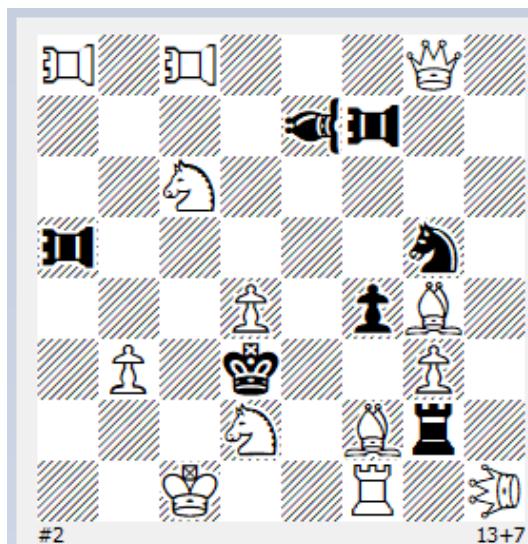
Тюнин Александр Дмитриевич  
(Tyunin Aleksandr Dm.)  
Superproblem 2019  
Тема Fleka  
№4

1.Sh3-g5 ! threat:  
2.Sg5-h7 #  
1...Sc2-e3  
2.Sh4-f5 #  
1...VAd2-e3  
2.Ke4-f4 #  
1...PAa3-e3  
2.Ke4-f3 #  
1...PAh8\*h4  
2.e7-e8=S #

1.PAe2-e3 ? threat: (A B C)  
2.Sh4-f3 #  
2.Sh4-f5 #  
2.Sh3-f4 #  
1...VAe1\*h4  
2.Sh3-f4 # (C)  
1...Sc2\*e3  
2.Sh4-f5 # (B)  
1...PAa3\*h3  
2.Sh4-f3 # (A)  
1...PAh8\*h4  
2.e7-e8=S #

but  
1...Sc2-d4 !

(R3)1(R3)3Q1/4(b3)(r3)2/2N5/(r3)5n1/3P1pB1/1P1k2P1/3N1Br1/2K2R1(Q3)



a5, f7, c8, a8: Pao  
e7: Vao  
h1: Leo

Решение:

Тюнин Александр Дмитриевич  
(Tyunin Aleksandr Dm.)  
Superproblem 2019

№5

1.Rf1-e1 ! threat:  
2.Bg4-e2 #

1...f4-f3  
2.Re1-e3 #

1...Rg2\*f2  
2.Lh1-d5 #

1...PAa5-a2  
2.PAa8-a3 #

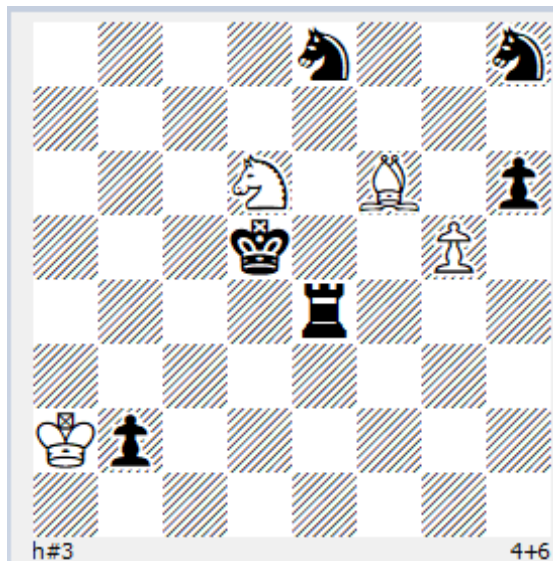
1...PAa5-c5  
2.Sc6-e5 #

1...Sg5-f3  
2.Bg4-f5 #

1...VAe7-c5  
2.Sc6-b4 #

1...PAf7\*f2  
2.Qg8-c4 #

4n2n/8/3N1B1p/3k2P1/4r3/8/Kp6/8



ParrainCirce

Решение:

Тюнин Александр Дмитриевич  
(Tyunin Aleksandr Dm.)  
Best problems 2019

Tema Zilahi  
№6

- 1.Re4-d4 g5-g6
- 2.Sh8\*g6 Sd6-b7 [+wPe7]
- 3.Se8\*f6 e7-e8=Q [+wBf7] #
- 1.Kd5\*d6 Bf6-d4 [+wSb4]
- 2.Re4-e6 Bd4-g1
- 3.h6\*g5 Bg1-d4 [+wPd8=wQ] #
- 1.Kd5-c5 Ka2\*b2
- 2.Re4-e7 [+bPb5] Kb2-c3
- 3.Se8\*d6 Bf6-d4 [+wSb4] #
- 1.h6\*g5 Bf6-e7 [+wPf6]
- 2.Se8\*f6 Sd6-c8 [+wPe8=wQ]
- 3.Sf6\*e8 Sc8-b6 [+wQd6] #

