

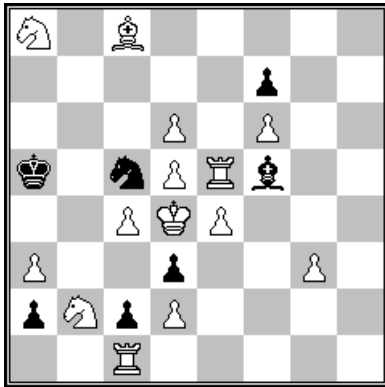
Entry No 1

Kıvanç Çefle

İstanbul, Turkey

Pat a Mat, 2021

Issue No 117, Problem No 1265



HS#3.5

14+7

C+ (Popeye)

FEN: N1B5/5p2/3P1P2/k1nPRb2/2PKP3/P2p2P1/pNpP4/2R5

Two Solutions

Solutions:

1...a2-a1=B 2.Re5*f5 Sc5-e6 + 3.Kd4-e5 Se6-f4 4.g3*f4 Ba1*b2 #

1...Bf5-d7 2.Kd4*c5 Bd7-c6 3.d5*c6 a2-a1=S 4.Re5-d5 Sa1-b3 #

Content:

- *Underpromotion*
- *In the first solution white captures the static bishop and the knight after it moves. In the second solution roles of the black pieces are reversed, the Knight is static and the bishop is captured after moving. The capturing pawns constitute selfbocks to the white king.*
- *Zugzwang*

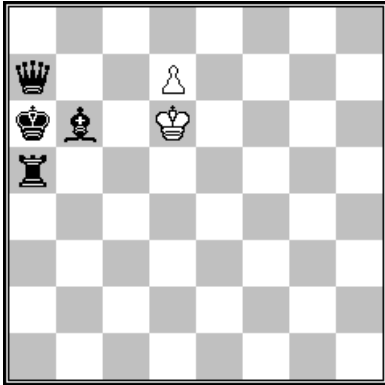
Entry No 2

Kıvanç Çefle

İstanbul, Turkey

Pat a Mat, 2021

Issue No: 118, Problem No: 1373



Ser-#5

2+4

C+(Popeye)

FEN: 8/q2P4/kb1K4/r7/8/8/8/8

Fairy condition: Sentinelles

Two solutions

Solutions:

1.d7-d8=S 2.Sd8-c6 3.Sc6-d4[+wPc6] 4.Sd4-b5[+wPd4] 5.Sb5-c7[+wPb5] #

1.d7-d8=R 2.Rd8-c8 3.Rc8-c5 4.Rc5-b5[+wPc5] 5.Rb5*b6[+wPb5] #

Content:

- *Unusual model mates which are possible only thanks to the double checks. One of the checks are given by the pawn left behind after the Knight/ Rook moves. Another newly appearing pawn controls a square adjacent to the black king, completing the mating net*
- *Analogy between solutions*
- *Miniature*
- *Underpromotion*

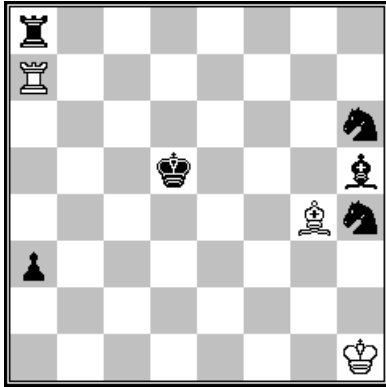
Entry No 3

Kıvanç Çefle

İstanbul, Turkey

The Problemist, 2021

Volume: 28, issue no: 5, Problem no: F3677



H#2

3+6

C+(Popeye)

FEN: r7/R7/7n/3k3b/6Bn/p7/8/7K

Fairy conditions: Platzwechsel Circe, Transmuting Kings

Two solutions

Solutions:

1.Bh5*g4[+wBh5] Ra7-a5 + 2.Kd5*h5[+wBd5] Bd5-f7 #

1.Ra8*a7[+wRa8] Bg4-f3 + 2.Kd5*a8[+wRd5] Rd5-d8 #

Content:

- *White batteries constructed by an unusual mechanism*

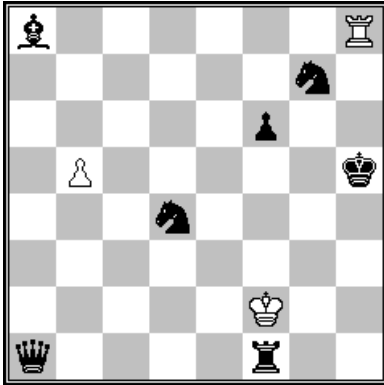
Entry No 4

Kıvanç Çefle

İstanbul, Turkey

The Hopper (<https://www.thehoppermagazine.com>), 2021

Problem No: SS025



Ser-#34

3+7

C+(Popeye)

FEN: b6R/6n1/5p2/1P5k/3n4/8/5K2/q4r2

Fairy condition: Functionary Chess

Solution:

1.Kf2-e2 2.Ke2-d1 3.Kd1-c2 4.Kc2-b3 5.Kb3-a4 6.Ka4-a5 7.Ka5-a6 8.Ka6-a7 9.Ka7*a8 10.Ka8-a7
11.Ka7-a6 12.Ka6-a5 13.Ka5-a4 14.Ka4-b3 15.Kb3-c2 16.Kc2-d1 17.Kd1-e2 18.Ke2-f3 19.Kf3-f4 20.Kf4-
f5 21.Kf5*f6 22.Kf6-f5 23.Kf5-f4 24.Kf4-f3 25.Kf3-e2 26.Ke2-d1 27.Kd1-c2 28.Kc2-c3 29.Kc3*d4
30.Kd4-e5 31.Ke5-f6 32.Kf6*g7 33.Kg7-f6 34.Kf6-f5 #

Content:

- *Only king moves, including the checkmate move.*
- *The white king can and must move only on squares observed by enemy pieces, thanks to the fairy condition.*
- *Unusual checkmate move , made possible by the fairy condition.*

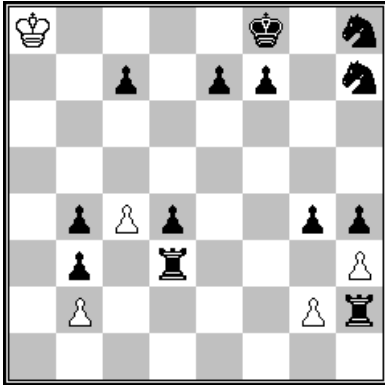
Entry No 5

Kıvanç Çefle

İstanbul, Turkey

Julia's Fairies (<https://julfairies.com/>), 2021

Problem No: 1687



Ser-#40

5+13

C+(Popeye)

FEN: K4k1n/2p1pp1n/8/8/1pPp2pp/1p1r3P/1P4Pr/8

Fairy condition: White Maximummer

Solution:

1. Ka8-b7 2. Kb7-c6 3. Kc6-d5 4. Kd5-e4 5. Ke4*d3 6. Kd3-e4 7. Ke4-d5 8. Kd5-c6 9. Kc6-b5 10. Kb5-a4
11. Ka4*b3 12. Kb3-c2 13. Kc2-d3 14. Kd3-e4 15. Ke4-f5 16. Kf5*g4 17. Kg4-h5 18. g2-g4 19. Kh5-h6
20. Kh6*h7 21. Kh7*h8 22. Kh8-h7 23. Kh7-h6 24. Kh6-g5 25. Kg5*h4 26. Kh4-g3 27. Kg3*h2 28. Kh2-g3
29. Kg3-f4 30. Kf4-e5 31. Ke5*d4 32. Kd4-c5 33. Kc5*b4 34. Kb4-a5 35. b2-b4 36. h3-h4 37. h4-h5 38. h5-h6
39. h6-h7 40. h7-h8=D #

Content

- *Long king walk.*
- *With the use of double pawn push twice (18.g2-g4 and 35.b2-b4), the king changes the color of the squares on which he moves and enables the h3 pawn to move.*

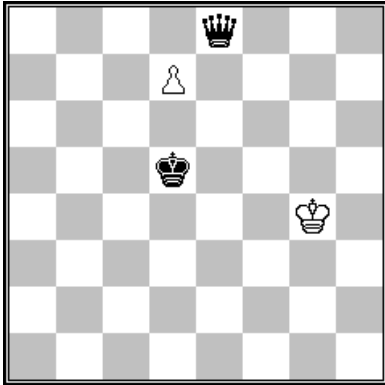
Entry No 6

Kıvanç Çefle

İstanbul, Turkey

feenschach, 2021

Issue no: 246, Problem No: 12638



H#2 2+2 C+(Popeye)

FEN: 4q3/3P4/8/3k4/6K1/8/8/8

Fairy conditions: Platzwechsel Circe, Transmuting Kings

a)Diagram; +b) bQe8-->c8 ; +c) wKg4-->e2; +d) +bNa5 (all continued twinning)

Solutions

- 1.Kd5-e6 d7-d8=S + 2.Ke6-g7 Sd8-e6 #
- 1.Qc8*d7[+wPc8=B] + Kg4-b4 2.Kd5-c6 Bc8-b7 #
- 1.Kd5-d4 d7*c8=R[+bQd7] 2.Qd7-d5 Rc8-c4 #
- 1.Qc8*d7[+wPc8=Q] Qc8*d7[+bQc8] + 2.Kd5-a8 Qd7-b7 #

Content:

- Allumwandlung
- Unusual mating positions
- Malyutka