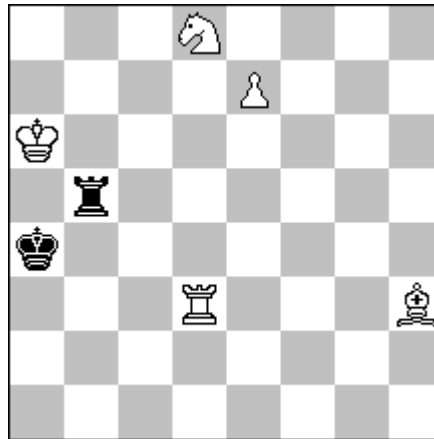


Entry N.1

Daniel Novomesky

18332 Die Schwalbe Heft 305 Oktober 2020



s#14 C+ (5+2)

3S4/4P3/K7/1r6/k7/3R3B/8/8

Solution:

1.e8Q Kb4 2.Qe4+ Kc5 3.Qc6+ (3.Qe5+? Kb4??, but 3.....Kc4!) Kb4 4.Qc3+ Ka4 5.Qc4+ Rb4 6.Qc6+ Rb5 7.Bg4 Kb4 8.Qe4+ Kc5 9.Qd5+ Kb4 10.Qb3+ Kc5 11.Se6+ Kc6 12.Qc4+ Rc5 13.Bd1 R*c4 14.Ba4+ R*a4#

Promotion, model mate.

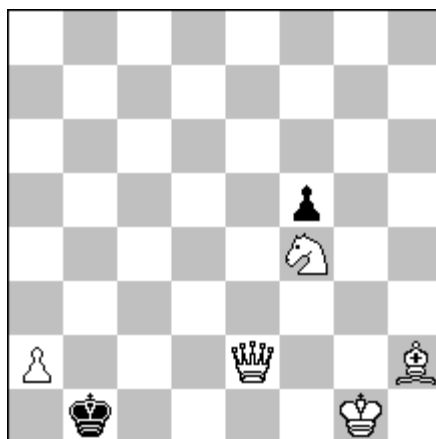
„Klarer Schlüsselzug, danach wird's aber deutlich interessanter. Tempomanöver, um im 7. Zug eine Stellungsverbesserung des Läufers zu erreichen, dann erneutes Tempomanöver mit nochmaligem stillem Läuferzug unter Damenopfer und im Anschluss das entscheidende Abschluss-Schachgebot durch den Läufer, wobei es durchaus überrascht, dass am Ende wT/wS alleine den schwarzen König stoppen können. Eine insgesamt sehr hübsche Miniatur.“ (JI)

Computer tested C+ Gustav 4.1a BruteForce

Entry N.2

Daniel Novomesky

1036 KOBULChess.com April 30th 2020



s#9

C+ (5+2)

8/8/8/5p2/5N2/8/P3Q2B/1k4K1

Solution:

1.Kh1 (ZZ) Ka1,Kc1 2.**Bg1** (ZZ) Kb1 3.**Bd4** (ZZ) Kc1 4.Qb2+ Kd1 5.**Bg1** (ZZ) Ke1 6.Qc2 (ZZ) Kf1 7.Sd3 (ZZ) f4 8.**Bh2** (ZZ) f3 9.Qg2+ f*g2#

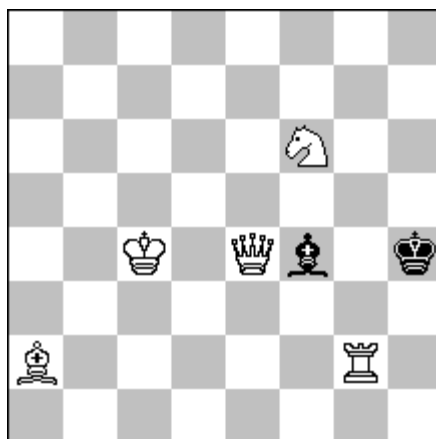
Return of the white Bishop (Bh2-g1-d4-g1-h2), 7 times Zug Zwangs.

Computer tested C+ Gustav 4.1a BruteForce

Entry N.3

Daniel Novomesky

Z644 Probleemblad Nr.2 April-Juni 2020



s#12

C+ (5+2)

8/8/5N2/8/2K1Qb1k/8/B5R1/8

Solution:

1.Rg7 Kh3 2.Qg2+ Kh4 3.Rh7+ Bh6 4.Se4 Kh5 5.Kd5 (ZZ) Kh4 6.Ke6 (ZZ) Kh5 7.Kf7 (ZZ) Kh4 8.Kg8 (ZZ) Kh5 9.Kh8 (ZZ) Kh4 10.Bg8 (ZZ) Kh5 11.Qh3+ Kg6 12.Rg7+ B*g7#

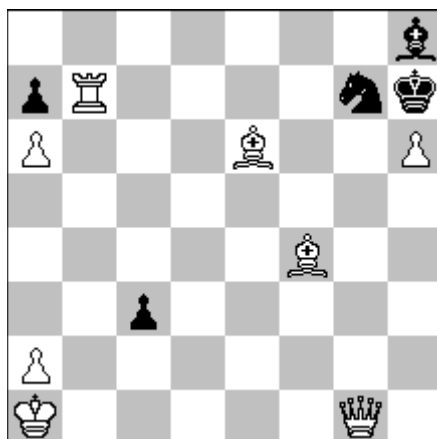
March of the white King (Kc4-d5-e6-f7-g8-h8), six times ZuckZwangs.

Computer tested C+ Gustav 4.1a BruteForce

Entry N.4

Daniel Novomesky

F180 SuperProblem October 9th 2019



S#10 C+ (8+5)

7b/pR4nk/P3B2P/8/5B2/2p5/P7/K5Q1

Solution:

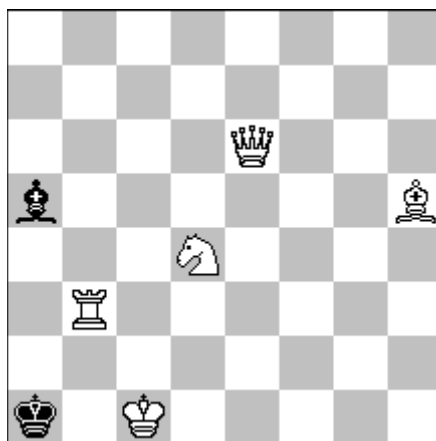
1.Be3 c2 2.Bf5+ Kg8 3.h7+ Kf8 4.Bc5+ Ke8 5.Qg6+ Kd8 6.Bb6+ a:b6 7.Qg5+ Ke8 8.Bg6+ Kf8 9.Rb8+ Se8+ 10.Qf6+ B:f6#

Computer tested C+ Gustav 4.0 BruteForce

Entry N.5

Daniel Novomesky

505 PAT a MAT December 110/2019



S#9

C+

(5+2)

8/8/4Q3/b6B/3N4/1R6/8/k1K5

Solution:

1.Qa6! (ZZ) Ka2 2.Rb1 Ka3 3.Rb2 (ZZ) Ka4 4.Bd1+ Ka3 5.Qd3+ Bc3 6.Rd2 (ZZ) Kb4 7.Qb5+ Ka3
8.Sc2+ Ka2 9.Qb2+ B*b2#

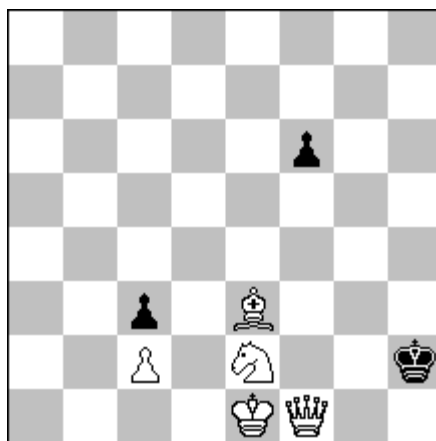
Miniature with ideal mate.

Computer tested C+ Gustav 4.0 BruteForce

Entry N.6

Daniel Novomesky

МОСКОВСКИЙ КОНКУРС – 2020 (F13)



s#8

C+ (5+3)

8/8/5p2/8/8/2p1B3/2P1N2k/4KQ2

Solution:

1.Bh6 f5 2.Sf4 Kg3 3.Qh1 (ZZ) Kg4 4.Kd1 (ZZ) Kg3 5.Qh3+ Kf2 6.Se2 (ZZ) f4 7.Bg5 (ZZ) f3
8.Bc1 f:e2#

Four times Zug Zwangs.

Computer tested C+ Gustav 4.1a BruteForce