

12th European Chess Solving Championship, Glyfada (Athens), 16–17 April 2016

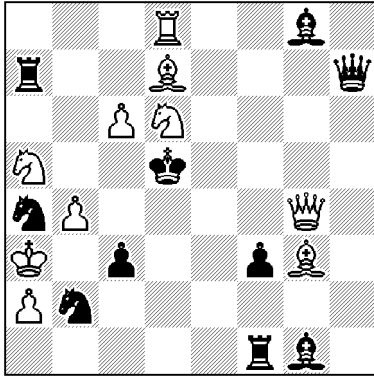
Name:

Country:



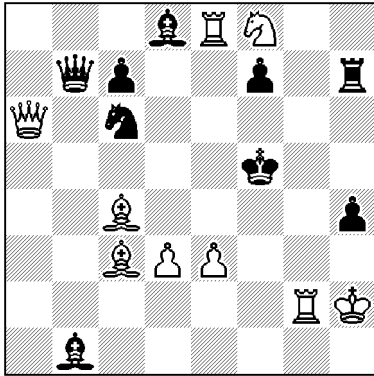
1st round: twomovers (20 minutes)

1



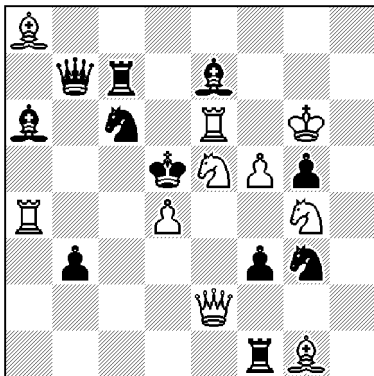
≠2 (10+10)

2



≠2 (9+9)

3



≠2 (10+11)

12th European Chess Solving Championship, Glyfada (Athens), 16–17 April 2016

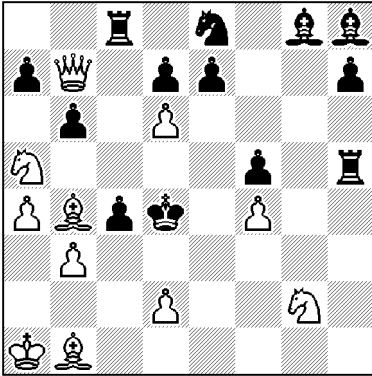
Name:

Country:



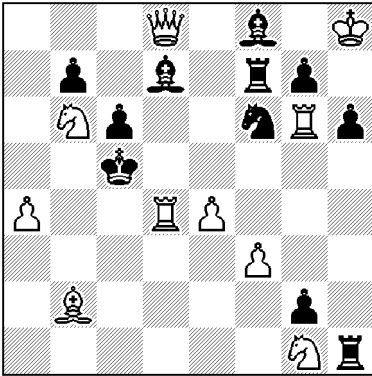
2nd round: threemovers (60 minutes)

4



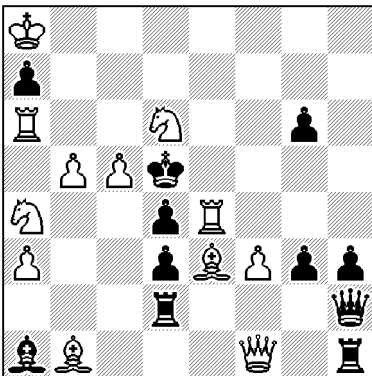
$\neq 3$ (11+13)

5



$\neq 3$ (10+11)

6



$\neq 3$ (12+11)

12th European Chess Solving Championship, Glyfada (Athens), 16–17 April 2016

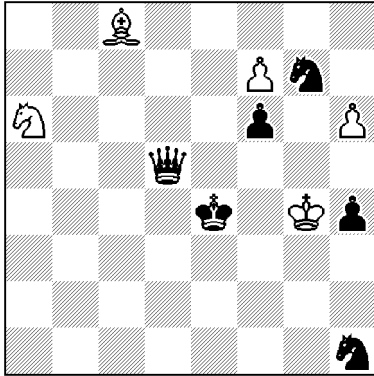
Name:

Country:



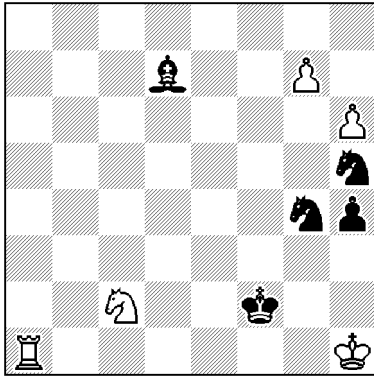
3rd round: endgames (100 minutes)

7



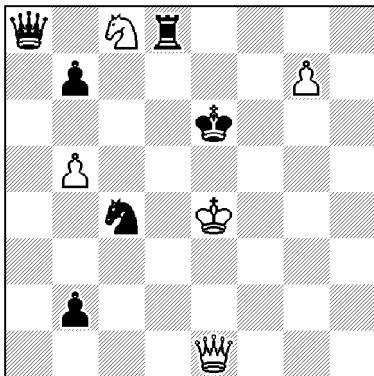
+ (5+6)

8



= (5+5)

9

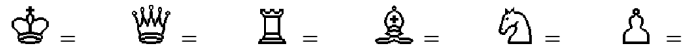


= (5+6)

12th European Chess Solving Championship, Glyfada (Athens), 16–17 April 2016

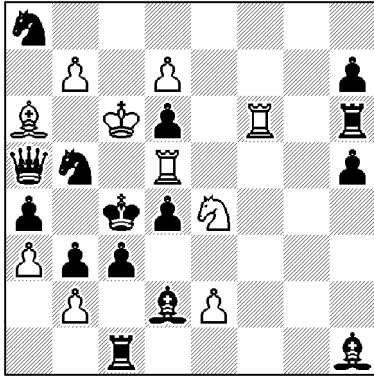
Name:

Country:



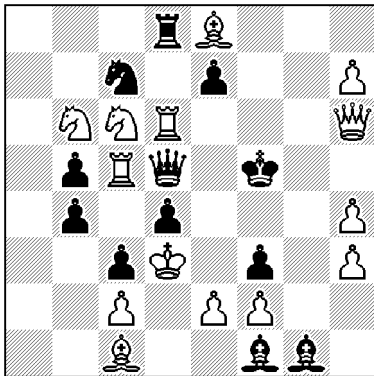
4th round: selfmates (50 minutes)

10



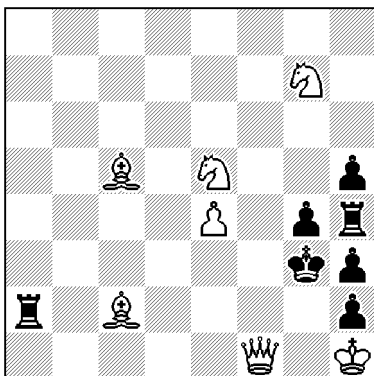
s≠2 (10+15)

11



s≠3 (14+12)

12



s≠5 (7+7)

12th European Chess Solving Championship, Glyfada (Athens), 16–17 April 2016

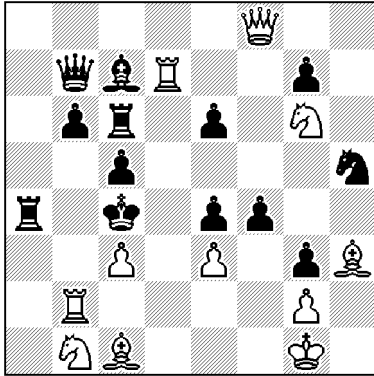
Name:

Country:



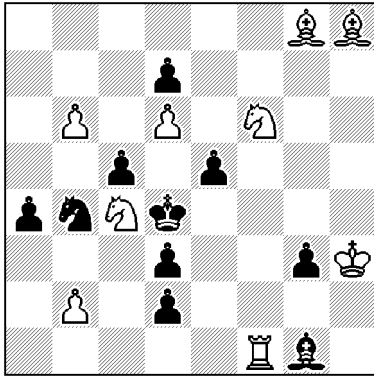
5th round: moremovers (80 minutes)

13



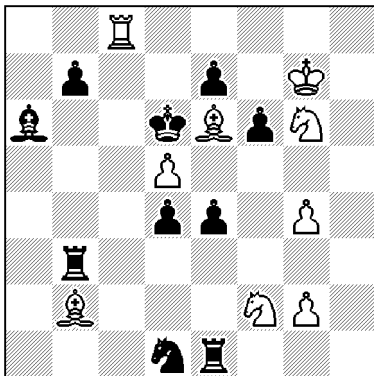
≠4 (11+13)

14



≠5 (9+10)

15



≠6 (9+10)

12th European Chess Solving Championship, Glyfada (Athens), 16–17 April 2016

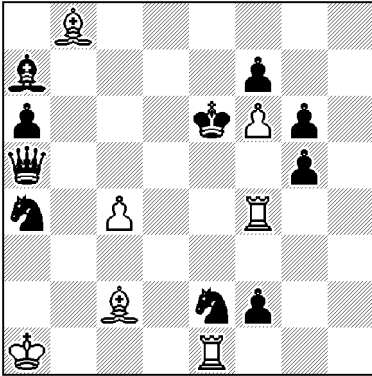
Name:

Country:



6th round: helpmates (50 minutes)

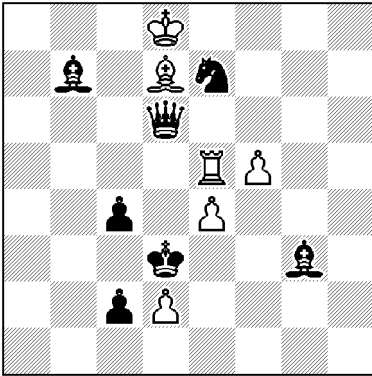
16



@@@ = 1,5 / 3,25 / 5

h≠2 3 sol. (7+10)

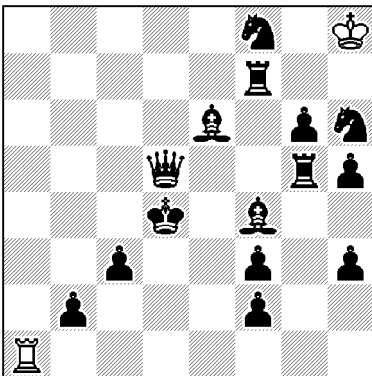
17



@@ = 2,5 / 5

h≠3 2 sol. (6+7)

18



@@ = 2,5 / 5

h≠5,5 2 sol. (2+15)