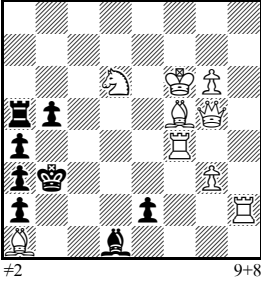


ECSC: PROBLEMS

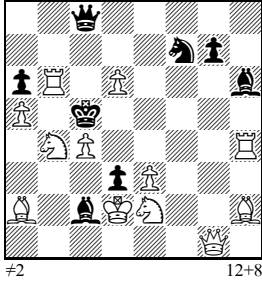
1. T. H. BWEE

1. Pr. Problemblad 1970-II (mirrored)



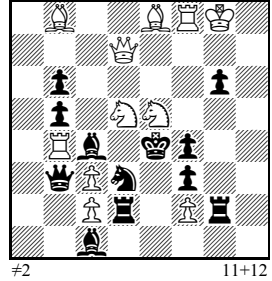
2. A. ZARUR

3. Pr. MT A. Ellerman-100 1993-95 (mirrored)



3. F. PACHL

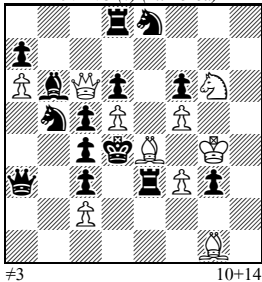
2. Pr. Die Schwalbe 1993-II (mirrored)



5. V. F. RUDENKO V. CHEPIZHNY

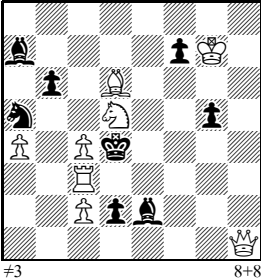
4. Pr. TT British Chess Federation 1972-73 (v) (mirrored)

4. Pr. TT British Chess Federation 1972-73 (v) (mirrored)



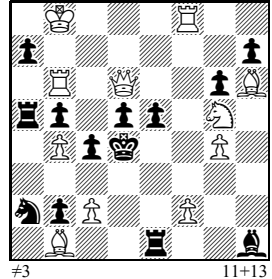
4. J. FRIDLIZIUS

1. Pr. St. Petersburger Zeitung 1898



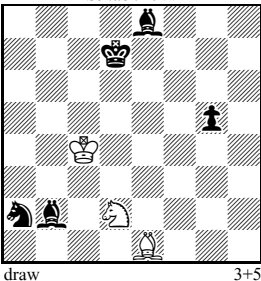
6. M. VLASOV

2. Pr. Problemblad 1999 (mirrored)



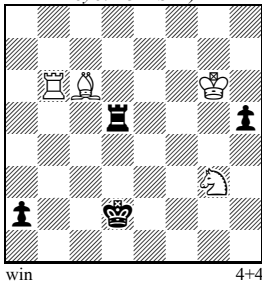
7. V. NOVIKOV

Schach 1977



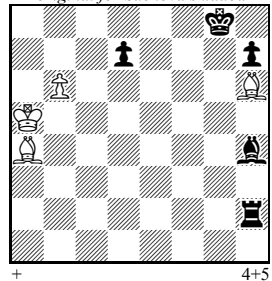
8. A. SOCHNIEV

1. HM Chavchavadze MT 1987 (version by J. POLASEK)



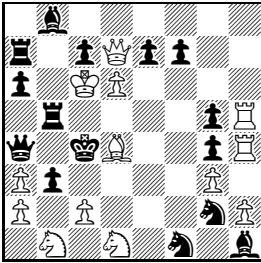
9. J. POLASEK

original for Sachova skladba



10. J.-P. BOYER

15. pl. 2. Match de l'Amitié
1967-70

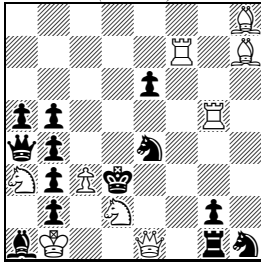


s#2

13+15

11. Ch. POISSON

HM e.a. Boletim da UBP 1992-93
(mirrored)

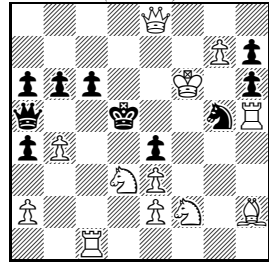


s#3

9+13

12. P. A. PETKOV

3. Pr. feenschach 1987 (v)
(mirrored)

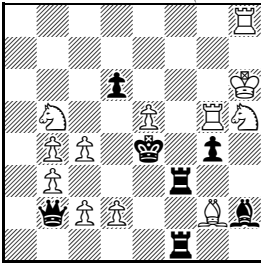


s#5

12+10

13. T. AMIROV

2. Pr. Probleemblad 1976 (mirrored)

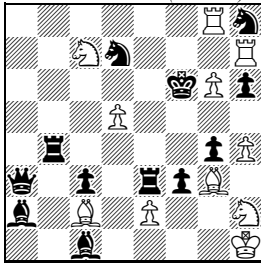


#4

12+7

14. C. GOUMONDY

1. Pr. Schach 1977 (mirrored)

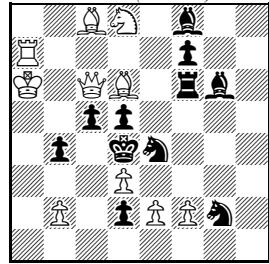


#5

11+12

15. MARANDYUK

1. pl. 11. Championship SSSR
1981-82 (mirrored)

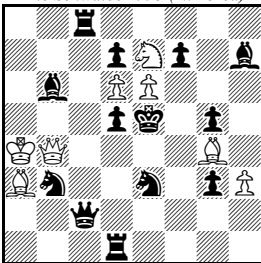


#6

10+11

16. R. VIEIRA

F. A. SONNENFELD
Die Schwalbe 1993 (mirrored)



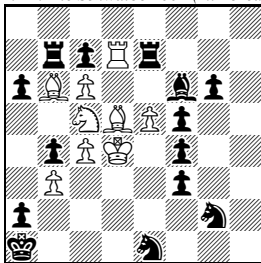
h#2 (4 solutions)

8+13

17. J. GORDIAN

E. ORLOV

1. Pr. Die Schwalbe 2002 (mirrored)

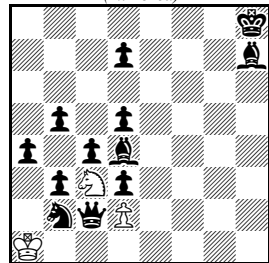


h#3 (2 solutions)

9+14

18. M. PEVSNER

1. Comm. diagrammes 1996
(mirrored)



h#6 (2 solutions)

3+12