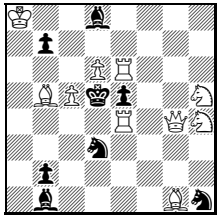


OPEN SOLVING TOURNEY: PROBLEMS

1.

**R. ZALOKOCKIJ +
G. SINKARENKO**

2.-7. *Comm. JT Melnichenko
60 1999*

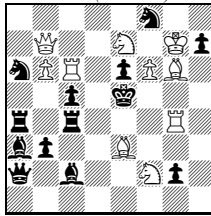


≠2 10+8

2.

**ZHELTONOZHKO
V. M. SHAVYRIN**

2. *Pr. TT Saint-Petersbourg
1998 (mirrored)*

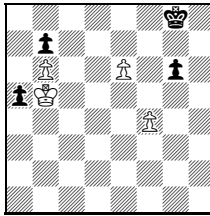


≠3 10+13

3.

E. MELNICHENKO

*Sinfonie Scacchistiche
1981*

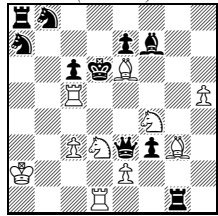


+ 4+4

4.

Ch. FEATHER

1. *Pr. The Problemist 1979
(mirrored)*

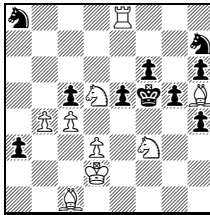


h≠2 (4 solutions) 10+10

5.

B. D. STEPHENSON

3. *HM The Problemist 1996*

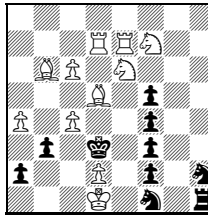


≠4 9+10

6.

V. ALAIKOV

3. *HM Phenix 1998*

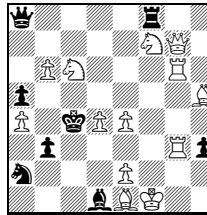


s≠6 11+10

7.

J. SAVOURNIN

59. *pl. 2. Match de Initie
1967-70*



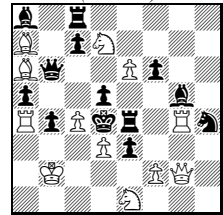
≠2 13+8

8.

H. le GRAND

J. van GOOL

1. *HM Probleemblad 1983
(mirrored)*

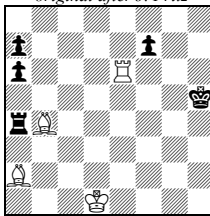


≠3 12+13

9.

J. POLASEK

original after J. Fritz

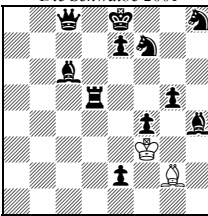


+ 4+5

10.

M. YLIJOKI

Die Schwalbe 2001



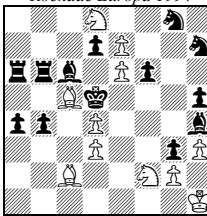
h≠5 (2 solutions) 2+11

11.

G. ETTL

B. SCHAUER

Rochade Europa 1994

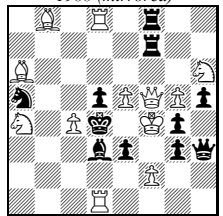


≠5 11+13

12.

M. MANOLESCU

2. *Pr. Memorial J.P. Boyer
1988 (mirrored)*



s≠3 12+11