

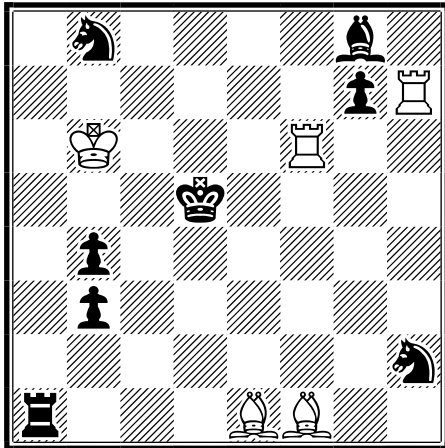
The problems are ordered according to the number of moves and pieces.

№1

Валерий ГУРОВ (Valery GUROV)

5 Prize 7 World Cup, 2019

1n4b1/6pR/1K3R2/3k4/1p6/1p6/7n/r3BB2



h#2

4.1.1.1

5+8

1.Rxe1 Rh4 **A** 2.Re5 Bc4# **B**

1.gxf6 Bc4+ **B** 2.Kd6 Bg3# **C**

1.Bxh7 Bg3 **C** 2.Be4 Rd6# **D**

1.Sxf1 Rd6+ **D** 2.Kc4 Rh4# **A**

Four step cyclic Zilahi.

Four step cycle of white moves **ABCD**.

HOTF (Two pairs of tactically identical solutions 1&3, 2&4).

The first and only implementation of this complex.

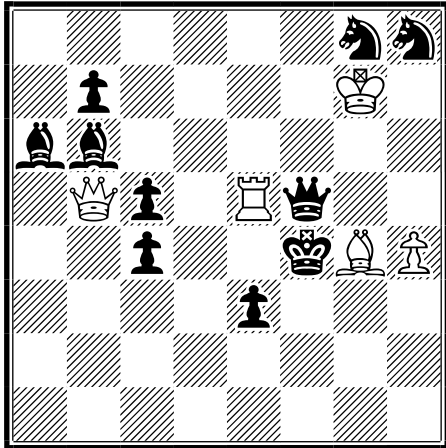
The problems are ordered according to the number of moves and pieces.

№2

Валерий ГУРОВ (Valery GUROV)

1-2 Prize MT Lobusov, 2021

6nn/1p4K1/bb6/1Qp1Rq2/2p2kBP/4p3/8/8



h#2

4.1.1.1

5+10

1.Sf6! Qc6 2.Qxe5 Qf3#

1.Sg6! Qb3 2.Qxg4 Qxe3#

1.Kxe5 Qxc5+ 2.Ke6 Bxf5#

1.Kxg4 Qxc4+ 2.Kh5 Rxf5#

HOTF.

Preliminary line closing against the check.

Zilahi.

Two Chumakov theme effects in the play of the black queen.

The pairs of solutions are connected by the active play of the white queen and by the thematic squares e5 and g4.

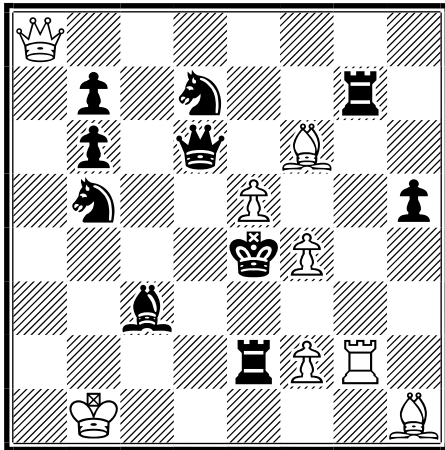
The problems are ordered according to the number of moves and pieces.

№3

Валерий ГУРОВ (Valery GUROV)

1-2 Prize "The Macedonian Problemist" (2537), 2021

Q7/1p1n2r1/1p1q1B2/1n2P2p/4kP2/2b5/4rPR1/1K5B



h#2

3.1.1.1

8+10

1.Q:e5 (Qe6?) Qb8 2.Qf5 Rg3# (1... Qa3? 2.Qf5 Rg4#??)

1.S:e5 (Sc5?) Qc8 2.Sd3 Rg4# (1... Qb8? 2.Sd3 Rg5#??)

1.B:e5 (Bd2?) Qa3 2.B:f4 Rg5# (1... Qc8? 2.B:f4 Rg3#??)

Cyclic change of control of flights d3, f4, f5: (selfblock, W1, W2).

Black antidual play, based on the the opening of the file for the white bishop.

Unsuccessful ambush by Ambush fails in try play.

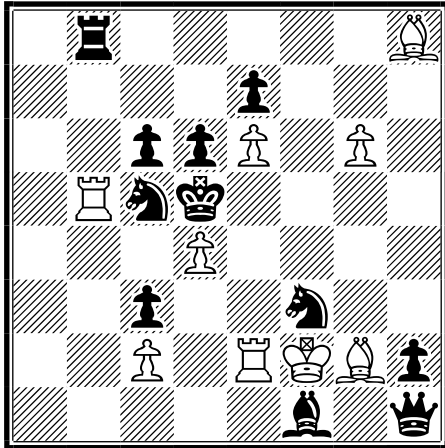
The problems are ordered according to the number of moves and pieces.

№4

Валерий ГУРОВ (Valery GUROV)

1 Prize 7 FRME, 2021

1r5B/4p3/2ppP1P1/1Rnk4/3P4/2p2n2/2P1RKBp/5b1q



h#2

4.1.1.1

9+11

1.Bxg2! Rb4 2.Sxd4 Rxd4#

1.Rxb5! Bh3 2.Sxe6 Bxe6#

1.Bxe2! Rxc5+ 2.Kxe6 Bh3#

1.Rxh8! Bxf3+ 2.Kxd4 Rb4#

HOTF.

Zilahi.

Change of functions of white and black pieces. The play of white and black on the same squares d4 and e6.

Chumakov theme.

The solutions are also united by black captures by bishop and rook.

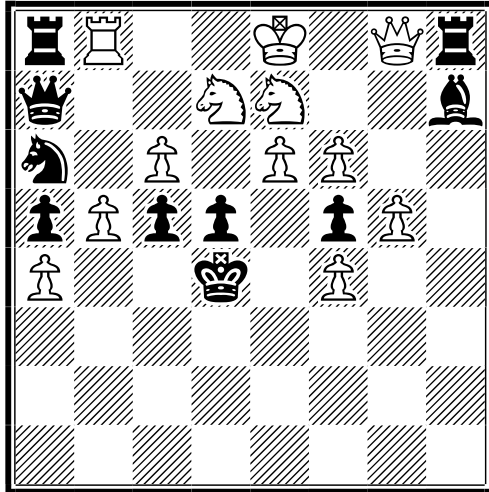
The problems are ordered according to the number of moves and pieces.

№5

Валерий ГУРОВ (Valery GUROV)

Special Prize 7 FRME, 2021

rR2K1Qr/q2NN2b/n1P1PP2/pPpp1pP1/P2k1P2/8/8/8



h#3 2.1.1.1.1.1 12+10

1. S:b8! S:c5 2.K:c5 Qf8! 3.Kb6 S:d5#

1.B:g8! S:d5 2.K:d5 Rd8! 3.K:e6 Sf8#

Zilahi

Mates by indirect battery (Change of functions - two pieces are captured and other two create the indirect battery and vice versa).

Preliminary removal of guard from squares b6 and e6.

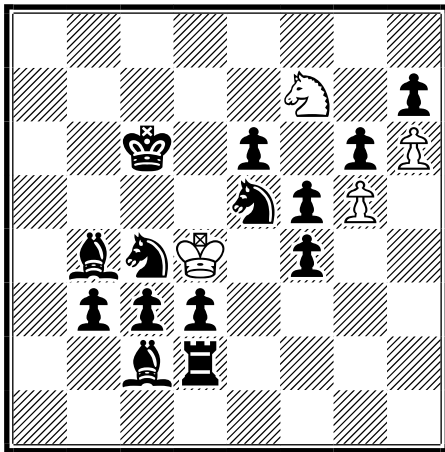
The problems are ordered according to the number of moves and pieces.

№6

Валерий ГУРОВ (Valery GUROV)

2 Prize (Silver medal) 9 World Cup, 2021

8/5N1p/2k1p1pP/4npP1/1bnK1p2/1ppp4/2br4/8



h#4,5

set play

4+14

1... ... 2.Sd7 **K:c4!** 3.Sc5 Kd4 4.Kb5 **Ke5** 5.**Kc4** Sd6 #

1...Sh8! (S~?) 2. Sd6 **K:e5!** 3.Se4 Kd4 4.Kd6 **Kc4** 5.**Ke5** Sf7# !

White Kniest theme.

Chumakov theme.

Play of wK&bK to squares c4 and e5.

wS hideaway and switchback.

Chameleon echo model mates.