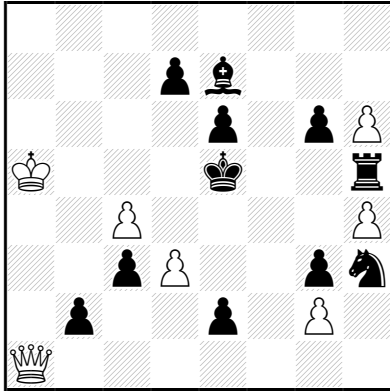


For WCCI -2019-2021 section E - HELPMATES 6 problems

**№1. PETKO A.PETKOV**  
MAT PLUS 2021

Published in Mat Plus  
on July 28<sup>th</sup> 2021



**h#2**    b) Pe6→f7    (7+11)  
          c) Pe6→e3  
          d) Pe6→c7

(C+ WinChloe 3,52, Py 4,87)

If we assume that: the square **f6** = field **A**, **f4** = field **B**, **d4** = field **C** and **d6** = field **D**, we see in the 4 twins the following **cyclic dependence** between the moves of the black king and the white Queen, respectively: **AB-BC-CD-DA**.

**Solutions:**

- a) 1.Sg5 Qc1 2.Kf6 (A) Qf4# (B);
- b) 1.f5 Qg1 2.Kf4 (B) Qd4# (C);
- c) 1.Bg5 Qa3 2.Kd4 (C) Qd6#(D);
- d) 1.Bc5 Qf1 2.Kd6 (D) Qf6# (A).

**Thematic complex:**

**1). MAXIMUM ACTIVITY OF THE wQ IN A H#2 - 8 Q MOVES - TASK!!**

DEFINITION OF THIS NEW THEME IN ITS "IDEAL FORM::" In a H#2 with "n" phases ("n" solutions, "n" twins, set + "n-1" solutions, etc.) the white Queen that is **not pinned** in the starting position, realizes all white moves **without checks, without repetitions of moves and without captures of enemy pieces**. The number of white Queen's moves will be  $X = "n" \times 2$  where "n" is the number of the phases." **THEREFORE - HERE WE HAVE A TASK WITH 8 Q - MOVES!**

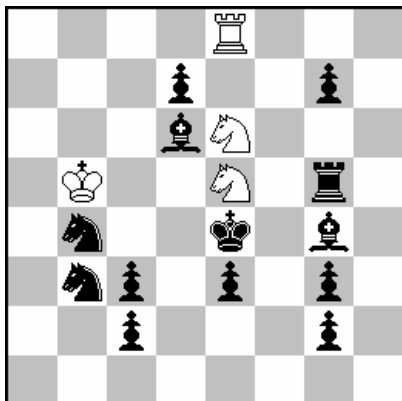
2). **A cyclical duel between the wQ and the black King**, which step in a cyclic order on four squares demonstrating a **"King`s Star"**): **AB-BC-CD-DA**.

3). **Preventive closing (deactivation ) of the black battery Kingt/Rook , built on the fifth horizontal. All squares around the black King in the starting position are free.**

**THIS COMPLEX IS SHOWN FOR THE FIRST THEME!**

**№2. PETKO A.PETKOV**  
TT-255; H# SuperProblem -2021  
**1<sup>st</sup> Prize**

Published in Super Problem  
on July 29<sup>th</sup> 2021



**h#2 4 solutions (4+13)**

**C+ WinChloe 3.52, Popeye 4,87**

**Theme of 255 T.T :** *In one phase a mating move is a move of White piece on the same square on which in final position of another phase Black King stands. Set play as a thematic phase is allowed. Zero-positions and any kinds of twins are allowed. Additional non-thematic phases are not allowed. Fairy pieces and conditions are not allowed.*

**Solutions:**

**Thematic squares:** (a) = f3 (b) = d4, (c) = d3, (d) = f4

- |                                      |              |
|--------------------------------------|--------------|
| I. 1.Sc5 Sd3(c) 2.Kf3 (a) Sd4# (b)   | <b>c a b</b> |
| II. 1.Bf5 Sf4(d) 2.Kd4 (b) Sf3# (a)  | <b>d b a</b> |
| III.1.Bc5 Sf3 (a) 2.Kd3 (c) Sf4# (d) | <b>a c d</b> |
| IV.1.Sd5 Sd4 (b) 2.Kf4 (d) Sd3# (c)  | <b>b d c</b> |

**Thematic complex:**

1. Two pairs of solutions in which the theme is implemented twice - in solutions I and II - on squares **a** and **b**, and in solutions III and IV - on squares **c** and **d**.

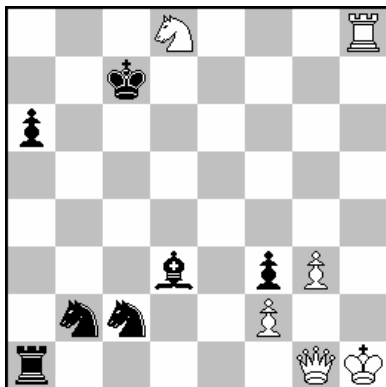
2. Two pairs of solutions are connected by an additional cyclic motif, since the thematic first move of White from the other pair appears in the solution of each pair: **c a b - d b a - a c d - b d c**.

3. Additional strategy: white half-battery play; four times unpins of the white Se5 on the first move.

**4. THIS COMPLEX IS SHOWN FOR THE FIRST THEME!**

**№3. PETKO A.PETKOV**  
TT-255; H# Super Problem -2021  
 8th Honorable mention

Published in Super Problem  
 on July 29<sup>th</sup> 2021



h#2 (6+7)  
 b) Sd8→a4  
 c) Sd8→f5

C+ WinChloe 3.52, Popeye 4,87

Solutions:

Thematic squares: (a) = c8 (b) = b7, (c) = d7

- a) 1.Kc8 (a) Qb1! 2.Sd1 Qb7# (b) -> (a) (b) 1.Sd1? but not 2.Qb1  
 b) 1.Kb7 (b) Qd1! 2.Bf1 Qd7# (c) -> (b) (c) 1.Bf1? but not 2.Qd1  
 c) 1.Kd7 (c) Qc1! 2.Se1 Qc8# (a) -> (c) (a) 1.Se1? but not 2.Qc1

Thematic complex:

1. The theme of the 255 T.T of Super Problem -2021 is presented in 3 solutions with a cycle of fields a-b, b-c, c-a, on which play the black King and the white Queen.

**2. TOTAL - TASK WITH 6 QUEEN MOVES on 6 different squares, which is not pinned, without captures, and checks to the bKing, combined with BIVALVE!**

Additional strategy:

**3. Anti-critical moves of the white queen which demonstrates the PELLE theme, followed by unpins of the white queen.**

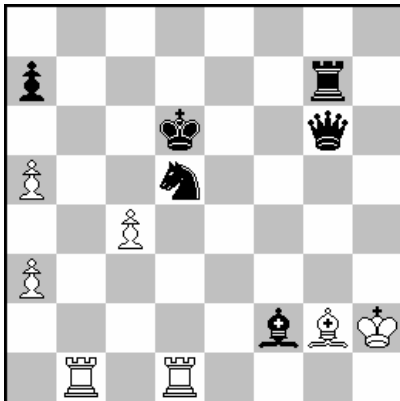
4. **BIVALVE theme** in the play of three black pieces: Sb2, Bd3, Sc2 and white Q - a black piece closes thr 1<sup>st</sup> horizontal for the bQ but opens a vertical for the same Q!

5. Thematic tries on the first move for black: [1.Sd1? 2.Qb1?? (position a), 1.Bf1? 2.Qd1?? (position b), 1.Se1? 2.Qc1?? (position c)] in with there are closings of the white Q

**This thematic synthesis is presented for the first time in the H# genre!**

**№4. PETKO A.PETKOV**  
TT-255; H# Super Problem -2021  
 6th Honorable mention

Published in Super Problem  
 on July 29<sup>th</sup> 2021



**h#2 (7+6)**

**C+ WinChloe 3.52, Popeye 4,87**

- b) Bg2→d8
- c) Qg6→b8

Solutions:

Thematic squares: (a) = c5 (b) = c6, (c) = c7

- a) 1.Kc5 (a) Rb6 2.Sf6 Rc6# (b) -> (a) (b)
- b) 1.Kc6 (b) Rb7 2.Se7 Rc7# (c) -> (b) (c)
- c) 1.Kc7 (c) Rb5 2.Se3 Rc5# (a) -> (c) (a)

Thematic complex:

1. MAXIMUM ACTIVITY OF THE w. ROOK in a H#2 - 6 R - MOVES without checks, captures and pinned Rook in the starting position!

2.The theme of the 255 T.T of Super Problem -2021 is presented in 3 solutions with a cycle of fields a-b, b-c, c-a, on which play the black King and the white Rook!

Additional strategy:

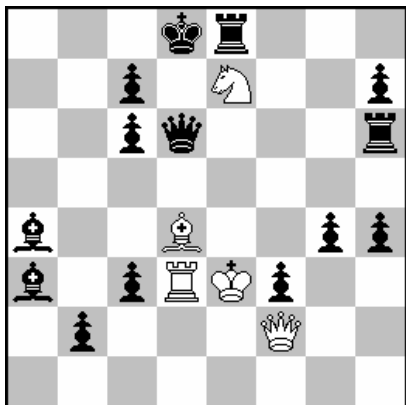
3. After the unpin of the black Sd5 by the black King follows the BIVALVE theme in the play of the black Sd5 which opens a white line and closes and closes black pieces in three phases - Q,R,B on f6,e7 and e3 respectively.

**This thematic synthesis is presented for the first time in the H# genre!**

## №5. PETKO A.PETKOV

St-Germain-au-Mont-d'Or T.T. 2019

1<sup>st</sup> Prize



h#2 2 solutions (5+14)

C+ WinChloe 3.52, Popeye 4,87

### Solutions:

- I. 1.Qc5! Qxh4! 2.Rxh4 Bxc5#
- II. 1.Qf6! Qxb2! 2.Bxb2 Bxf6#

The theme of this T.T. was: Mates assists of all lengths, with active sacrifice of black or white queen. (Judge: Yves Tallec)

**Judge Yves Tallec's comment:** *"With its joint sacrifices of the two white and black Queens, this problem is a clear realization both in form and in substance. The Black Queen unmasks a white Bishop - Rook battery that she masked in the diagram and which gives model mates. Black rook and black Bishop provoked gaps and two-color reciprocal interruptions to free the file d. A good theme complex!"*

### **Additional author's comment:**

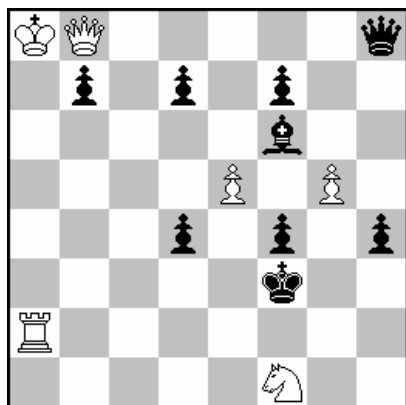
1. This is a double realization of the theme with **two Queens who are not pinned in the starting position** and demonstrate active sacrifices!

2. Here the sacrifices of the black Queen of the fields c5 and f6 have "BIVALVE" - effect: the vertical "d" is opened for the white battery but the diagonal a3-f8 for Ba3 (I sol.) is closed; analogical: the 6<sup>th</sup> horizontal is closed for Rh6 (II sol). The sacrifices of the white Queen of the fields h4 and b2 demonstrate the theme ANNIHILATION of the black pawns with goal to to make possible the moves 2.Rxh4 (I sol) and 2.Bxb2(II sol) with the kidnapping of the black R and B..

**THIS EXTREMELY COMPLEX CONTENT WITH MODEL MATES IS PRESENTED HERE FOR THE FIRST TIME!**

**№6. PETKO A.PETKOV**  
 7° Azemmour, Vilnius 2019  
 10°-11° Honorable Mention

Published in Congress bulletin  
 Vilnius, 2019



**h#2 4 solutions (6+9)**

**C+ WinChloe 3.52, Popeye 4,87**

7° Azemmour theme: In each phase, only two pieces play, one white and one black. Several special cases can be distinguished. If the same piece of some side plays in all phases, such case is called White or Black Monopoly. If pieces of some side are different in all phases, such case is called White or Black Anti-monopoly. Mixed forms are also possible. At least two phases and two moves are required.

Solutions:

HOTF - PROBLEM WITH TWO DUETS:

**I DUET:** I.1.Bxe5! Qe8 2.Bb8 Qe2#  
 II.1.Bxg5! Qg8 2.Bd8 Qg2#

Thematic complex (I Duet): Annihilation - captures with the black Bishop of e5 / g5 in order to open lines for the white Queen. Anti-critical PELLE - moves of the white Queen on the 8th horizontal. Unpins of the white Queen after BIVALVE - moves of the black Bishop, who open a way for the white Q vertically (it stands in ambush!), but closes the way for the black lady on the 8th horizontal with unpins. In this Duo I we have echo-mates after 4 Bishop`s moves + 4 Q`s moves(4B+4Q)!

**II DUET:** III.1.Qh5! Qd6 2.Qg4 Qd5#  
 IV.1.Qh7! Qh8 2.Qe4 Qh5#

Thematic complex (II Duet): Duel between the white and the black Queens. In this Duo II we see 8 different Queen`s moves (4+4=8 Q!) - this is a paradoxical and very difficult idea! The black Q unpins the white Q, then bQ blocks a field next to the black king, and the white Q gives echo-mates of d5/h5.

**THIS EXTREMELY COMPLEX CONTENT WITH ECHOMATS IN BOTH PHASES IS PRESENTED HERE FOR THE FIRST TIME!**

