

ENTRIES FOR WORLD CHAMPIONSHIP IN COMPOSING FOR INDIVIDUALS (WCCI) 2019-21

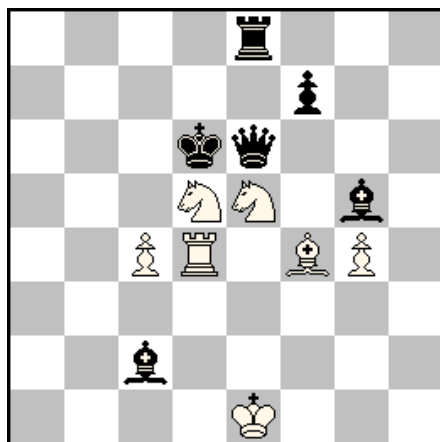
(E : Helpmates)

FROM S. K. BALASUBRAMANIAN (INDIA)

(E-Mail: skbala_bhu2002@yahoo.co.in)

Note:

1. Problems have been arranged in chronological order of their publication.
2. All Problems have been computer tested using Popeye Version 4.85.
3. Theme/Gist of the theme for formal tourneys have also been given wherever applicable.

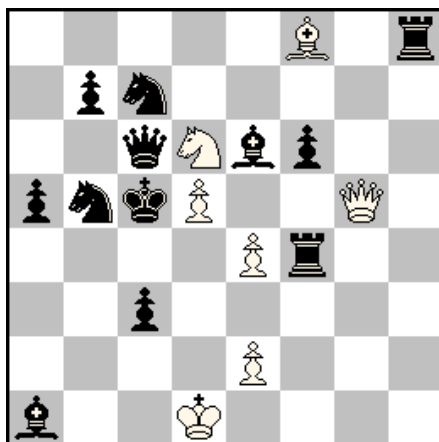
ENTRY No.1**S. K. Balasubramanian (India)**Published in “*Sinfonie Scacchistiche Apr. 2019*”
(Prob. No. 847)

(C+ Popeye 4.85)

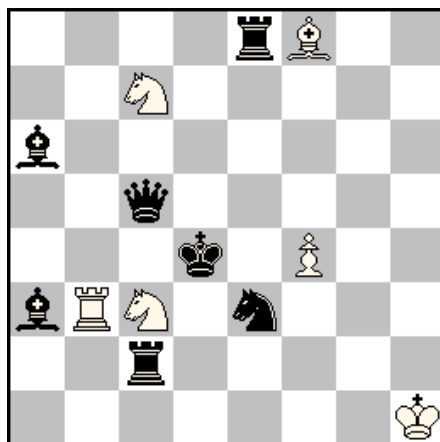
(7+6)

H#2 (2 Solutions)**1.Kd6-c5 Bf4-e3 2.Qe6-d6 Rd4-f4 #****1.Qe6-d7 Rd4-e4 2.Kd6-e6 Se5-d3 #****Features:**

- Formation of new battery after the original battery is destroyed.
- Interference mates.

ENTRY No.2**S. K. Balasubramanian (India)**Published in “*Sinfonie Scacchistiche Sept. 2019*”
(Prob. No. 938)**(C+ Popeye 4.85)****(7+12)****H#2 (2 Solutions)****1.Kc5-d4 Bf8-h6 2.Kd4-e3 Qg5-g1 #****1.Qc6-a6 Qg5*f6 2.Kc5-b6 Sd6-c8 #****Features:**

- Rear Battery piece discards the original battery and forms a new masked battery which fires finally effecting pin mate.
- Dynamic formation of masked battery.

ENTRY No.3**S. K. Balasubramanian (India)**Published in “*Sinfonie Scacchistiche Oct-Dec. 2019*”
(Prob. No. 1029)

(C+ Popeye 4.85)

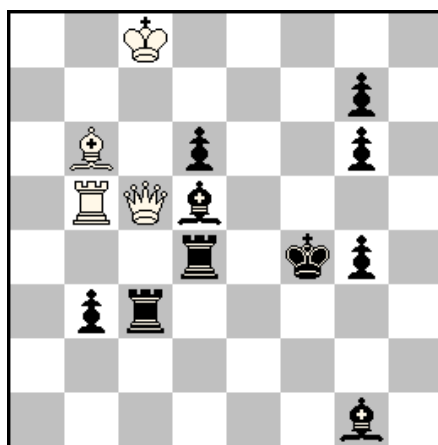
(6+7)

H#2 (a) Diagram (b) Sc3 -> b6**(a) 1.Ba6-d3 Rb3-b4+ 2.Qc5-c4 Sc7-b5 #****(b) 1.Re8-e4 Bf8-g7+ 2.Qc5-e5 Sc7-e6 #****Features:**

- Two self-blocks by bQ with self pin.
- Self-interference by the same line piece (interference of bB & bR both by bQ).
- Critical Play.
- Pin mates.
- ODT.

ENTRY No.4**S. K. Balasubramanian (India)****23rd Sabra Composing Tourney, 2020****Commend**

Award Date 19.10.2020



(c+ Popeye 4.85)

(4+10)

H#2 (2 Solutions)

1. Rc3-g3 **Qc5*d5** 2. **Rd4-e4** Qd5-f7 #
 1. Rc3-f3 **Qc5*d4+** 2. **Bd5-e4** Qd4*d6 #

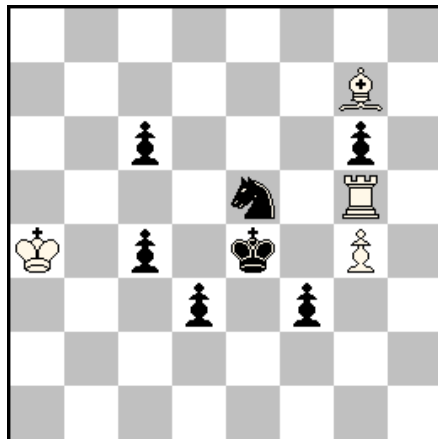
Theme: An orthodox H#2 is required. A black or white piece blocks a white line. In one phase the blocking piece comes out of the line and in the other phase it is removed from the line.

Features:

- **Theme is DOUBLED.** In one solution, bR, which is blocking the line of wB moves away from the line and the bB, which is blocking the line of wR is removed from the line by capture by wQ. In the other solution, the blocking bB moves away from wR line and the blocking bR is removed away from wB line by capture by wQ.
- **Self-block** by both bR & bB on the same square.
- Unpin & selfblock on different squares by Rc3.
- **Interchange of functions** between Rd4 & Bd5.
- Masked white Battery and mates by the middle firing piece.
- **ODT.**

ENTRY No.5**S. K. Balasubramanian (India)****23rd Sabra Composing Tourney, 2020****4th HM**

Award Date 19.10.2020



(c+ Popeye 4.85)

(4+7)

H#2**(a) Diagram (b) Pd3 → d4 (c) Pg6 → c3 (d) – Pc4**(a) 1. Kd4 **R*e5** 2. Kc3 Re2 #(b) 1. Kd5 **B*e5** 2. Kc5 Bc7 #(c) 1. **Sg6** B*c3 2. Sf4 Re5 #(d) 1. **Sc4** Rd5 2. Se3 Rd4 #

Theme: An orthodox H#2 is required. A black or white piece blocks a white line. In one phase the blocking piece comes out of the line and in the other phase it is removed from the line.

Features:

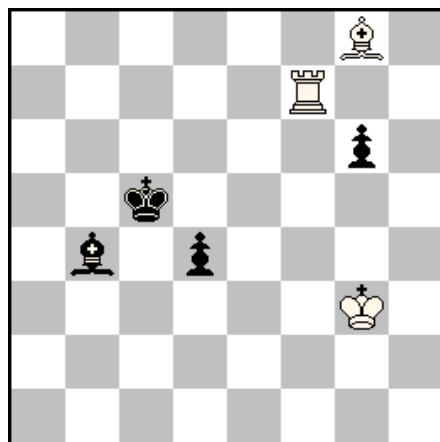
- **Theme is DOUBLED.** Same **bS** is blocking two white lines (**Novel Idea?**), which is removed by capture in (a) & (b) opening the lines for **wB** & **wR** respectively and the thematic **bS** moves by itself in (c) & (d) opening the lines for **wB** & **wR** respectively.

- **HOTF. Two sets of matched solutions.**

In (a), bK moves by two squares along the bishop line and **bR** captures bS to form the white battery. The white battery fires for the final mate by **wB** with the firing wR guarding bK's flights. In (b), bK moves by two squares along the rook line and the functions of **wR** & **wB** are **reversed**.

In (c), the bS moves away to open the line for **wB** and makes a **SELFBLOCK** on its second move. In (d), the bS moves away to open the line for **wR** and makes a **SELFBLOCK** on its second move. In both these phases, on its first move, the bS moves to the square vacated by bP for twinning.

- **Meredith.**

ENTRY No.6**S. K. Balasubramanian (India)****Quick Composing Tourney*****TT-256: "Twin as reincarnation of move"*****Special HM****Award Date: 26.07.2021****(c+ Pop)eye 4.85)****(3+4)****H#2****(a) Diagram (b) Kg3 -> f4 (c) Rf7 -> f6**

Theme: h#2-N: A diagram position – the twin a – has the only solution. Each of at least two twins (b, c and etc) also has the only solution and the twinning method is the following: moving of White or Black unit to another square, herewith **this moving exactly corresponds to a legal move in the diagram position that was executed in the solution of the twin a.**

a) Diagram1.Kc5-d5 **Kg3-f4** 2.Bb4-c5 **Rf7-f6** #**b) Kg3-->f4**1.d4-d3 Rf7-c7+ 2.Kc5-d4 Rc7-c4 #
(1.Kd5? ?? 2.Bc5 Rf6???)**c) Rf7-->f6**1.Kc5-b5 Bg8-c4+ 2.Kb5-a5 Rf6-a6 #
(1.Kd5?? Rf7 2.Bc5 Rf6???)

Features:

- In (a) white mates bK by firing the battery. In (b) & (c) the same mate was not possible for two different reasons. In (b) it was due to lack of white tempo and in (c) white battery was already open and hence the bK cannot move to d5.
- **Miniature with no repeated moves.**