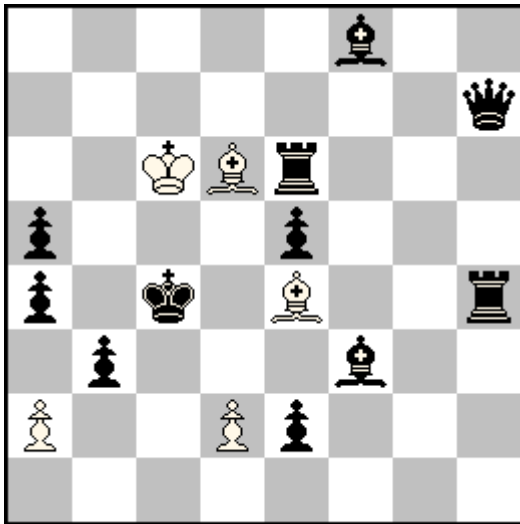


Nr. 1

Francesco SIMONI

SuperProblem 2019

3rd Prize



Published:
E715, SuperProblem (06-01-2019)

Award: 12-03-2021

5b2/7q/2KBr3/p3p3/p1k1B2r/1p3b2/P2Pp3/8

h#2 (5+11) C+

b) ♜a4→e7

c) ♚c4→d4

d) ♛h7→d8

a)

1. ♛e8 (♛e7?) ♙×e5 2. ♜b4 d3‡

b)

1. ♜h5 (♜g4?) ♙c2 2. ♛d4 a×b3‡

c)

1. ♛e7 (♛e8?) ♙d5 2. ♛d3 ♙c5‡

d)

1. ♜g4 (♜h5?) ♚b7 2. ♚b5 ♙d3‡

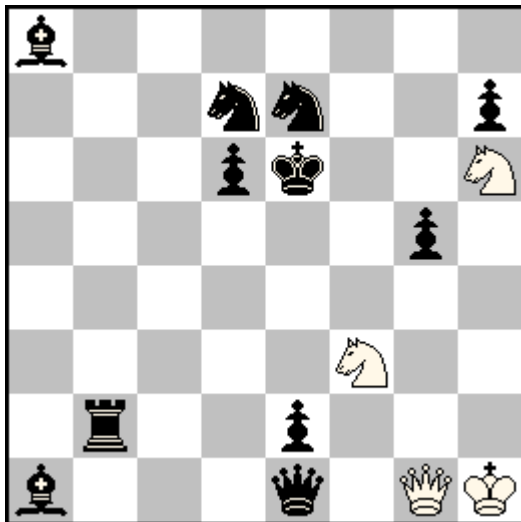
- ✓ HOTF; white direct unpins at B1; two pairs of reciprocal tries: diagonal-orthogonal echo.
- ✓ In a) and b), each unpinned piece moves to open a gate and to take some flights. Both in a) and b), a try fails for anticipatory black interference, preventing the interfered piece to selfblock at B2.
- ✓ In c) and d), vice versa, the unpins are combined with black interference, to allow the unpinned piece mates.

Nr.2

Francesco SIMONI

ASIGC 2019

2nd Prize



Published:
H25, Newsletter ASIGC (May 2019)

Award: 12-12-2020

b7/3nn2p/3pk2N/6p1/8/5N2/1r2p3/b3q1QK

h#2 (4+11) C+

4.1.1.1

Tries: 1. ♔f2? 1. ♔g3? fail due to the interference to a line of the wQ and the guard of one square of mate, in turn. 1. ♖h4+? 1. ♕d2? 1. ♗b4?

- 1. ♔a5! ♖×g5 (♕d4?) 2. ♞d5 (♜b7?) ♘d4‡
- 1. ♔c3! ♜d4 (♕×g5?) 2. ♜b7 (♞d5?) ♘×g5‡
- 1. ♔f6 ♔h2 (♔g2?) 2. ♔g6 ♖×g5‡
- 1. ♔d5 ♔g2 (♔h2?) 2. ♔e4 ♜d4‡

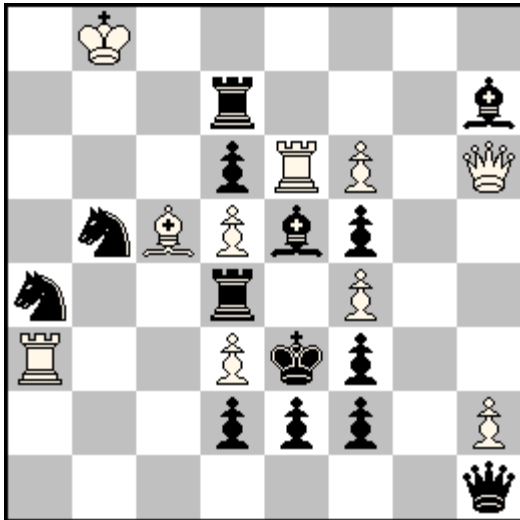
- ✓ HOTF with **four unpins** of the ♕g1.
- ✓ Two solutions with **direct unpin** at B1, followed by the **indirect unpin** of the ♘f3 at B2. **Reversal** of the final positions of ♕g1 and ♘f3, several tries, **reciprocal dual avoidance** at W1 and at B2.
- ✓ The other two solutions with **indirect self-unpin** at W1. The ♔ moves twice and the B1 of the first pair become the mating ones.

Nr.3

Francesco SIMONI

SuperProblem 2020

2nd Prize



Published:
E937, SuperProblem (25-04-2020)

Award: 21-12-2021

1K6/3r3b/3pRP1Q/1nBPbp2/n2r1P2/R2Pkp2/3ppp1P/7q

h#2 (10+14) C+

2.1.1.1

b) ♞a4→c4

a)

1. ♚×h2 f×e5 + 2. ♚f4 e×d6 †

1. ♜c7 ♜×d6 2. ♙×f4 ♜e6 †

b)

1. ♞c3 ♜×e5 + 2. ♞e4 d×c4 †

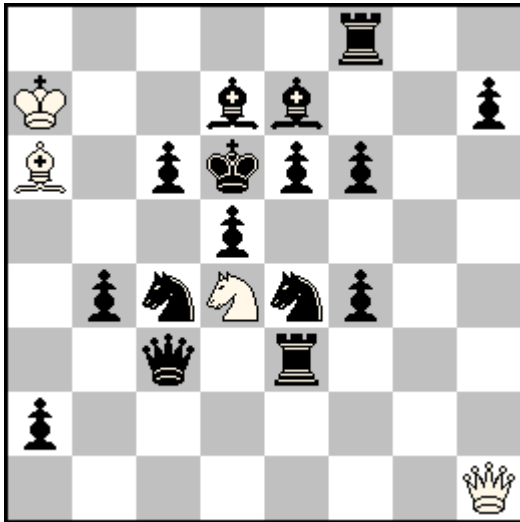
1. ♞c7 ♙×d6 2. ♜×f4 ♙c5 †

- ✓ HOTF. Play on the same squares (W1, 2) x 2, four mates with double pin.
- ✓ In a pair, a black piece moves twice, to self-pin at B2 after a check. Battery mate.
- ✓ In the other, anticipatory white indirect unpin at B1, black direct unpin at W1, self-pin at B2. Exchange of functions (♙c5/♜e6, Passive pin / Switchback mate).

Nr.4

Francesco SIMONI

SuperProblem 2021



Published:
E110, SuperProblem (24-08-2021)

5r2/K2bb2p/B1pkpp2/3p4/1pnNnp2/2q1r3/p7/7Q

h#2 (4+16) C+

2.1.1.1

b) ♔a6→g6

a)

1. ♔c5 ♔c1 2. ♞cd6 ♞b3♯

1. ♔c7 ♔xh7 2. ♞d6 ♞xe6♯

b)

1. ♔e5 ♔e1 2. ♞ed6 ♞f3♯

1. ♞d8 ♔xe4 2. ♔e7 ♞f5♯

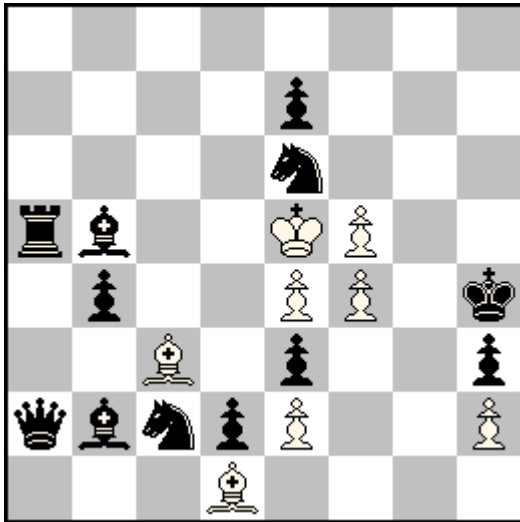
- ✓ ♔-star.
- ✓ 4 x W1 by ♔ (as far away as possible).
- ✓ 4 x self-blocks (3 x B2 self-blocks by different pieces on ♔'s initial square + 1 x B1 distant self-block on a different square).
- ✓ 4 x B-B FML.
- ✓ 4 x pin mates by ♞ (including 3 indirect self-pins at B2), where the ♔ is the pinning unit.

Nr.5

Francesco SIMONI

Pat a Mat 2019

4th Honourable Mention



Published:
43, Pat a Mat 107 (Mar. 2019)

Award: Pat a Mat 111 (Mar. 2020)

8/4p3/4n3/rb2KP2/1p2PP1k/2B1p2p/qbnpP2P/3B4

h#3 (8+12) C+

2.1.1...

1. ♘ed4 ♙×b4 2. ♚×e2+ ♜c5 3. ♚b5 ♙×e7‡

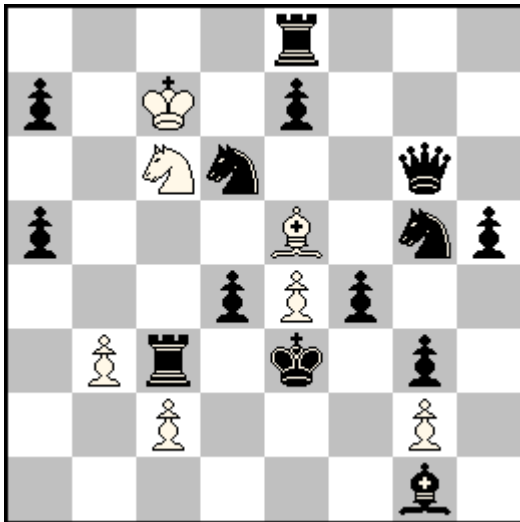
1. ♘cd4 ♙×d2 2. ♘×e2+ ♜c3 3. ♘2d4 ♙e1‡

- ✓ Indirect W/B unpin with guard abandonment to specify W1.
- ✓ Annihilation of a w♙, with battery check to specify W2.
- ✓ W self-pin.
- ✓ W line opening with again W/B indirect unpin and Switchback to specify B3.

Nr.6

Francesco SIMONI

SuperProblem 2021



Published:
E1115, SuperProblem (20/09/2021)

4r3/p1K1p3/2Nn2q1/p3B1np/3pPp2/1Pr1k1p1/2P3P1/6b1

h#3,5 (7+14) C+
b) ♞d6→f6

a)

1... ♔d7 2. ♞6xe4 (♞gxe4?) ♞xd4 (♞b4?) 3. ♚a6 ♞f3 4. ♚e2 ♞d4‡

b)

1... ♔b7 2. ♞gxe4 (♞6xe4?) ♞b4 (♞xd4?) 3. ♚g4 ♞d3 4. ♚e2 ♞xf4‡

- ✓ The ♔ moves to **self-unpin** the ♞.
- ✓ **Reciprocal dual avoidance**: the position taken by ♔ specifies which of the two ♞ moves at B2, to open a ♚ line and self-block.
- ✓ The ♚ would in fact have **two ways** to reach a square at B4 but must be able to move at B3 without giving check.
- ✓ **Reciprocal dual avoidance** also at the moves W2 of ♞, which must not interfere the ♚ at W3, so as not to prevent ♚ to self-block at B4.
- ✓ **Model mates**.