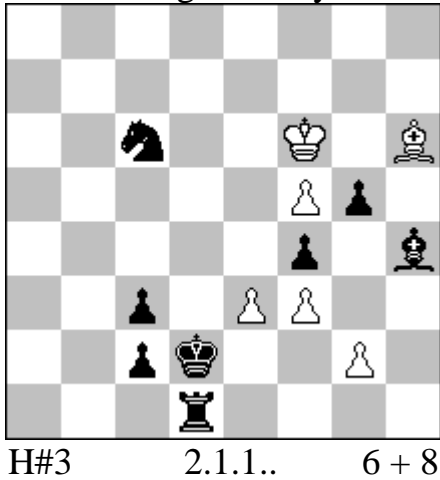


No. 1

Paz Einat
3rd Prize
Israel Ring Tourney 2019



1.Be1 Kxg5 2.fxe3 Kf4 3.e2 Ke4#

1.Bg3 exf4 2.Ke3 fxg5 3.Kf4 g6#

“It is extremely interesting the way the wK relates to the wP (eliminating the masking black pawns of the white battery they fire) and to the bK (moving along the battery in opposite direction).” Judge, Ricardo de Mattos Vieira

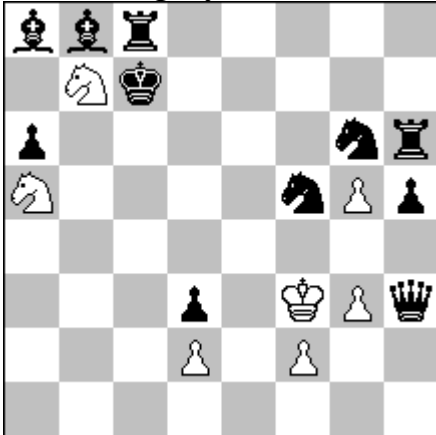
FEN:

8/8/2n2K1B/5Pp1/5p1b/2p1PP2/2pk2P1/3r4

No. 2

Paz Einat
2nd Com

Week-long Ty, Rhodes 2021



H#3 2.1.1.. 7 + 11

1.Se5+ (Sg~?) **Kf4** **2.Kb6** (2.Ba7? Sc5
3.Kb8 Sxa6 4.Rxa6) **Sd6** **3.Ka7** **Sxc8#**

1.Sd4+ (Sf~?) **Ke3** **2.Ba7** (2.Kb6? Sd6
3.Ka7 Sxc8 4.Qxc8) **Sc5** **3.Kb8** **Sxa6#**

In most such schemes the white king moves to the squares not covered by the black bishop (standing on b8 or a7). Here, the white king must go to the squares that bishop covers, so black must make an anticipatory interference to allow this move.

There is an additional layer of dual avoidance by the line opening of the black rook or queen, preventing the mates on a6 or c8, respectively.

- Exchange of places between the BK & BB
- Anticipatory interferences
- Self unpins

FEN:

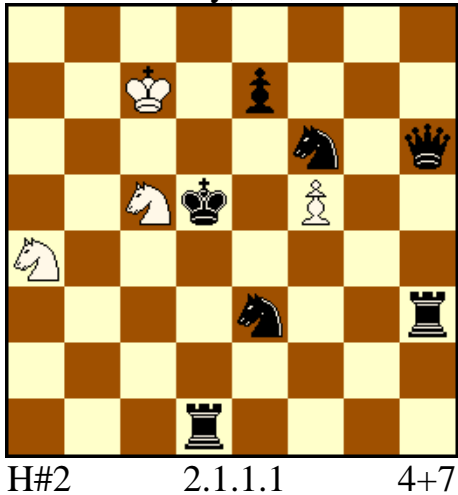
bbr5/1Nk5/p5nr/N4nPp/8/3p1KPq/3P1P2/8

No. 3

Paz Einat

4th HM

22nd Sabra Ty, Vilnius 2019



1.Rd4 (Sc4?) Sd3 (Sd7?) 2.Sc4 (Se4?) Sc3#

1.e5 (Se4?) Se6 (Sb3?) 2.Se4 (Sc4?) Sb6#

Black must make a critical move first as the white knight must make an interference on the critical square (anticipatory interference) to enable the mate.

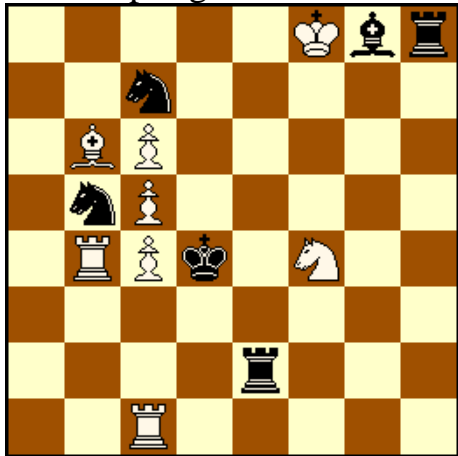
- Anticipatory interferences
- Critical moves
- Dual avoidance on every move before the mate

FEN:

8/2K1p3/5n1q/2Nk1P2/N7/4n2r/8/3r4

No. 4

Paz Einat
Award?
Springaren 2019



1.Sd6 (Re4?) Rb5 2.Re4 cxd6#

1.Sd5 (Re3?) Bc7 2.Re3 cxd5#

- Black anticipatory sacrifices on B1
- Each battery mate involves also indirect battery guarding an essential square
- Umnov

FEN:

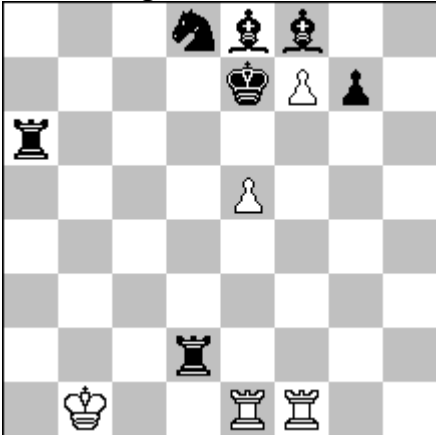
5Kbr/2n5/1BP5/1nP5/1RPk1N2/8/4r3/2R5

No. 5

Paz Einat

Award?

e4-e5 magazine 2020



1.Rd7 (Rad6?) fxe8=S 2.Rad6 exd6 #

1.Rf6 (Rdd6?) fxe8=B 2.Rd6 exf6 #

For black only rooks play

For white only pawns play

- Critical moves
- Minor promotions
- WP battery mates after black sacrifices

H#2 2 solutions 5 + 7

FEN:

3nbb2/4kPp1/r7/4P3/8/8/3r4/1K2RR2

