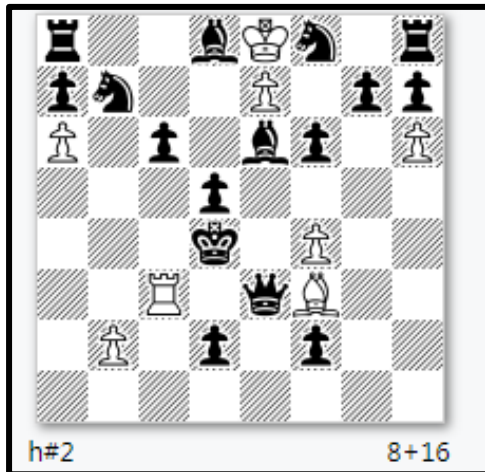


WCCI 2019 – 2021
Emanuel Navon
Israel

Emanuel Navon Arlosorov 108 Holon 5838407 **Israel**
emanuelnavon@gmail.com

Emanuel Navon - IL
 TT 230 Superproblem 2019
 3rd Prize



1.Qxf4 exd8S (exd8Q?) 2.Bc8 Sxc6#

1.Qxf3 exf8Q (exd8S?) 2.Bg8 Qb4#

BBe6 in B2 unpins promoted self-pinned white mating pieces knight and queen. To enable promotions bQe3 in both solutions anticipatory unpins wPe7 and at the same time determine white's line of play. Thematic play with only three pieces wPe7, bQe3 and bBe6. Very complex content.
 Judge: F Abdurahmanović

[Brochettes theme](#)

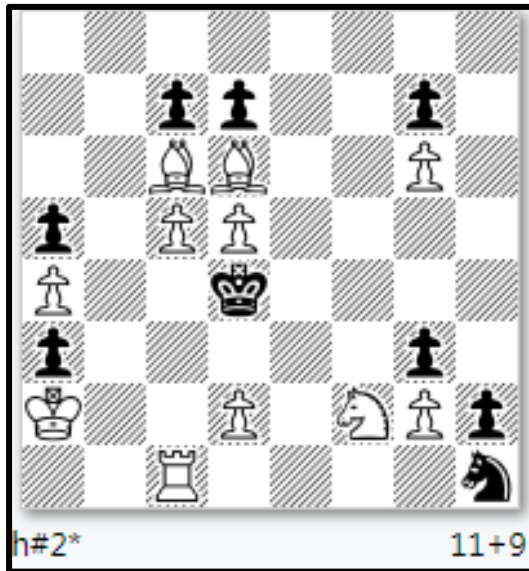
[AntiZielElement](#) (W1, self-pin) × 2

[Check prevention](#) (B-W) × 2

[Hideaway](#) (bQ, capturing) × 2

Theme: In a diagram position none white piece is pinned. In a solution all black moves are unpinning of white thematic pieces – direct or indirect (anticipatory).

Emanuel Navon
Israel
5th Composing Tourney of FRME, 2019
1st Prize



1...Bf8 2.d6 Bxg7#
 1...Re1 2.Kc4 Re4#
 1...Kb3 2.a2 Rc4#

zugswagen

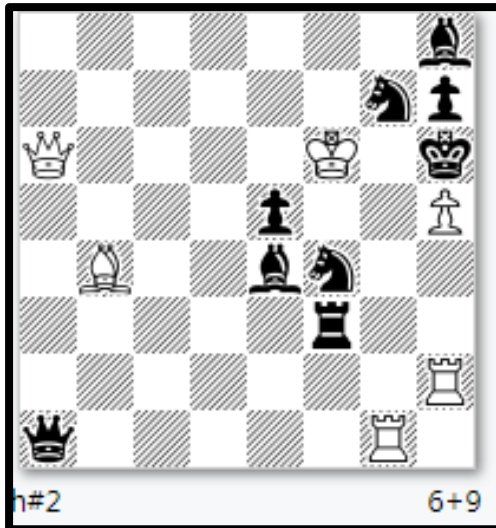
1.dxc6 Bf8 2.cxd5 Bxg7#
 1.cxd6 Re1 2.dxc5 Re4#
 1.Sxf2 Kb3 2.Sd3 Rc4#

[Bukovina theme](#) × 3
[AntiZielElement](#) (B1, flight-unguard) × 3

How the three set mates, in which White gives his opponent a waiting move, can be realized in the solution, even though Black weakens the white position with his first move, this is impressively demonstrated with beautiful dual avoidances. A helpmate that made me enthusiastic from the beginning. There are two comparable examples, but with a completely different structure, which is why the originality of the A54 is secured.

Judge: Franz Pachl

Emanuel Navon
Israel
TT Frem 2020
1st Prize



1.Sfxh5++(Sfe6+?) Ke7+ 2.Rf6 Bd2#

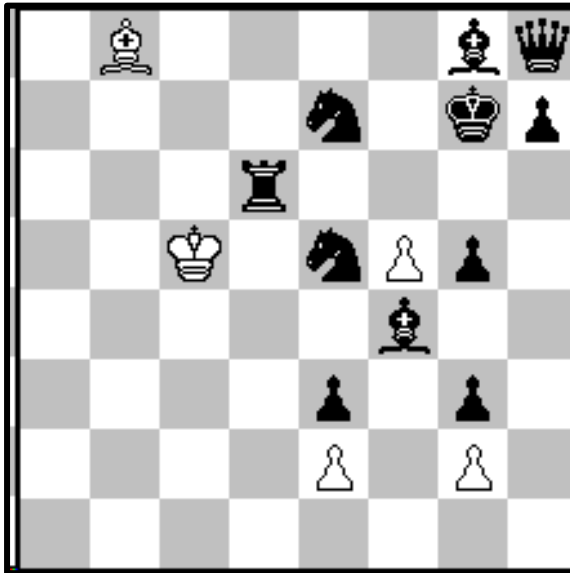
1.Sgxf5++(Sge6+?) Kf7+ 2.Bf6 Bf8#

Cross checks with self-pin of both black battery pieces that play on the same ideas. Umnov to f6. The problem has an abundant content.

Viktor Zaitsev
01/11/2020

- [Exchange of functions](#) (bRf3/bBh8, Passive / Pinned)
- [Exchange of functions](#) (bSf4/bSg7, Passive / Pinned + Line opening)
- [Hideaway](#) (bS, checking self-pinning) × 2
- [Hideaway](#) (wK)
- [Play on the same square](#) (B1, B2 2)

Emanuel Navon - Israel
2nd TT FREM, 2020
2nd prize



1...Kxd6 2.g4 Kxe7 3.Bh6 Bxe5#

1.Rh6 Bd6 2.S7g6 Be7 3.Sf7 f6#

H#3*

5 + 11

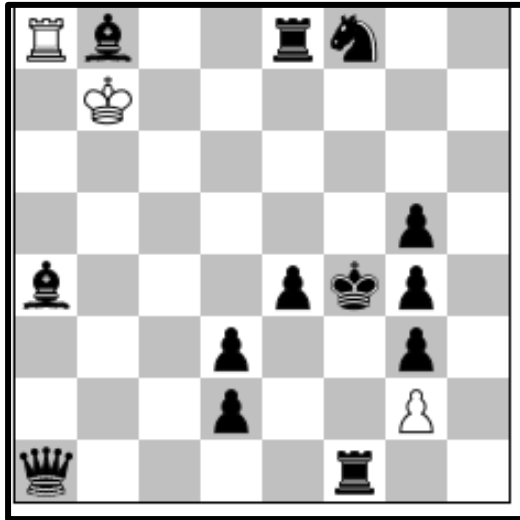
Three elements of the theme are performed when wK and wB moves on the same squares – d6,d7

The nonthematic addition of the composition are model mates, the white bishop and king playing on the same squares d6 and e7 and the exchange of functions of the pawn f5 and bishop.

[Chumakov theme](#) (rss, 3)

Theme: In set play, two or three black officers (not pawns) are captured. The same officers are in the solution used to block the squares around the black king.

Emanuel Navon
 Israel
 TT-251, SuperProblem, 03-03-2021
 2nd Prize



h#3 b) Kf4→e2 3+13

a) 1.e3 Rxa4+ 2.Re4 Rxa1 3.Be5 Rxf1#

b) 1.Rf2 Rxb8 2.Qf1 Rxe8 3.Bd1 Rxe4#

Doubled realization of the theme

Theme:

Chumakov theme for three or more Black pieces : in one phase all thematic pieces are used for square-blocking and in another phase – are captured.

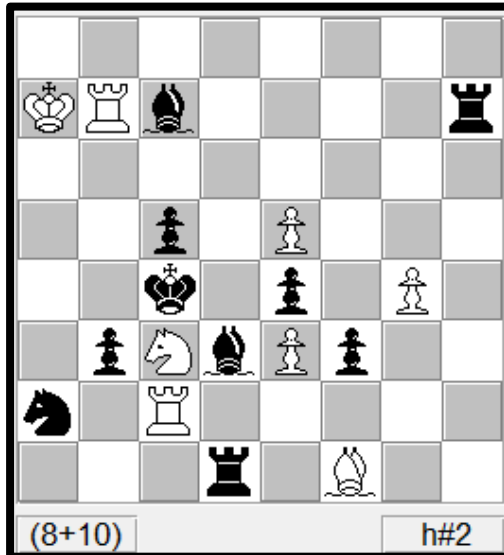
Emanuel Navon

Israel

StragteGems 2018

Vol. 21 January-March 2018 SG81

H2264 **6th Prize**



1. Bxe5 Re7 2. Bc7 Rxe4#

1. Ra1 Re2 2. Bb1 Rc2#

White-Black + Black-White form of the Klasinc theme:

A most original bivalves play .It may Look A Symmetrical but that is the beauty of it. In the first solution the black Bishop makes the switchback while in the second solution the white Rook does the same.