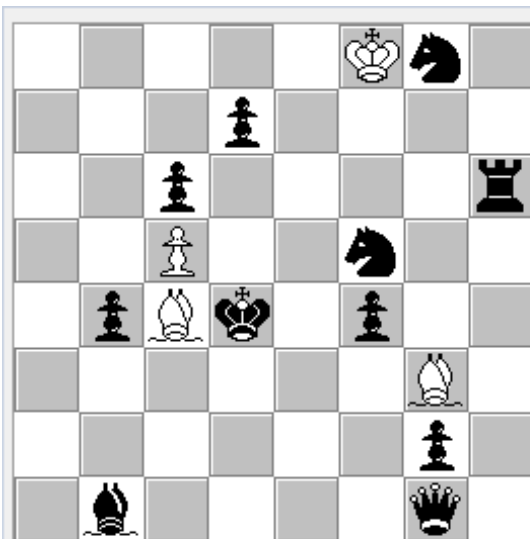


5Kn1/3p4/2p4r/2P2n2/1pBk1p2/6B1/6p1/1b4q1



(4+11)

h#3

Тюнин Александр Дмитриевич
(Tyunin Aleksandr Dm.)

Superproblem TTN^o221 2019

2 PRIZE

N^o1

4 sol

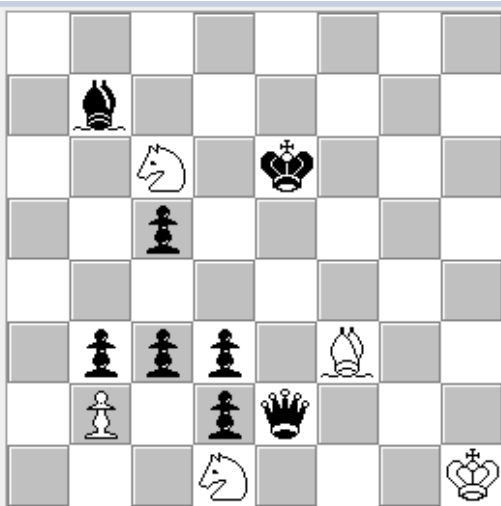
1. Ke3 Ba2
2. Ke2 Bxb1
3. Kf1 Bd3#

1. Kc3 Be1
2. Kb2 Bxb4
3. Ka1 Bc3#

1. Kxc5 Bf2
2. Kd6 Ba7
3. Qc5 Bb8#

1. Ke5 Kxg8
2. Kf6 Bh4
3. Kg6 Bf7#

8/1b6/2N1k3/2p5/8/1ppp1B2/1P1pq3/3N3K



(5+8)

h#3

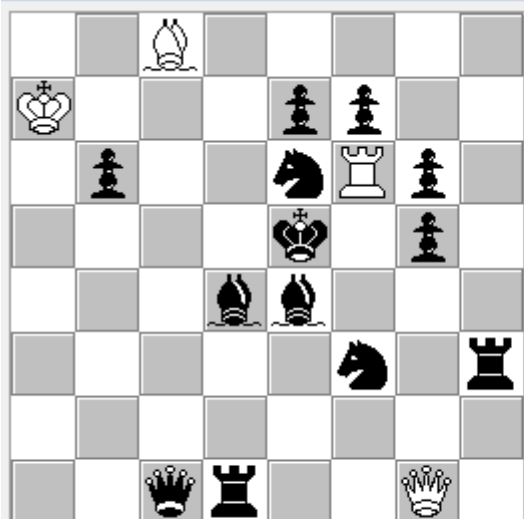
Тюнин Александр Дмитриевич
(Tyunin Aleksandr Dm.)
Superproblem 2019

№2

4 sol

1. c4 Sb8
2. Ke5 Sd7
3. Kd4 bxc3#
1. Qe3 Sxe3
2. Kd7 Sd5
3. Kc8 Bg4#
1. Qe4 Sf2
2. Kd5 Sxe4
3. Kc4 Sd6#
1. Qf2 Bg4
2. Kd5 Sxc3
3. Kc4 Be6#

2B5/K3pp2/1p2nRp1/4k1p1/3bb3/5n1r/8/2qr2Q1



(4+13)

h#2

Тюнин Александр Дмитриевич
(Tyunin Aleksandr Dm.)
Superproblem 2019

№3

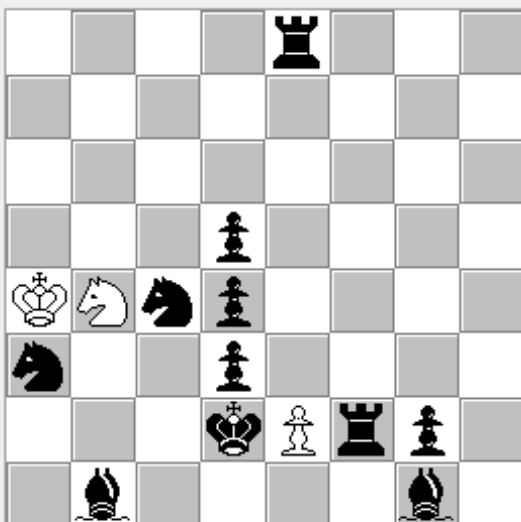
3 sol

1. Sf4 Rd6
2. Sd2 Qxd4#

1. Bc3 Kxb6
2. Kd6 Qc5#

1. Sd2 Rxc6
2. Kf5 Qxc5#

4r3/8/8/3p4/KNnp4/n2p4/3kPrp1/1b4b1



(3+11)

b) Swb4->c2
c) Sba3->c2

h#3

Тюнин Александр Дмитриевич
(Tyunin Aleksandr Dm.)

Superproblem TKN#259 2021

HM

N#4

|

a) Diagram

1. Kc3 Sc2
2. d2 Se3
3. Sc2 Sd1#

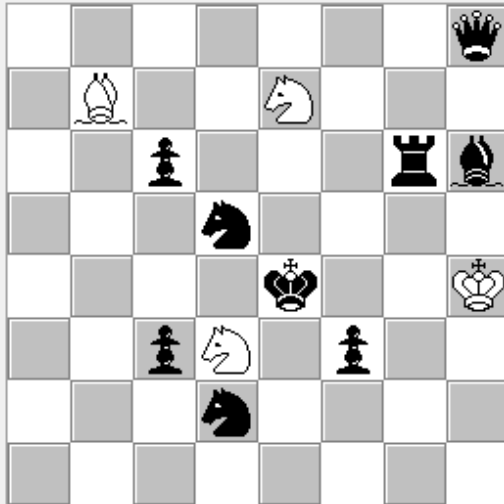
b) Swb4->c2

1. Kxe2 Sxd4
2. Kf1 Sf5
3. Re1 Sg3#

c) Sba3->c2

1. Rb8 Sxd5
2. Rb2 Sf6
3. Kc3 Se4#

7q/1B2N3/2p3rb/3n4/4k2K/2pN1p2/3n4/8



(4+9)

h#2

Тюнин Александр Дмитриевич
(Tyunin Aleksandr Dm.)

Superproblem TKN^o255 2021

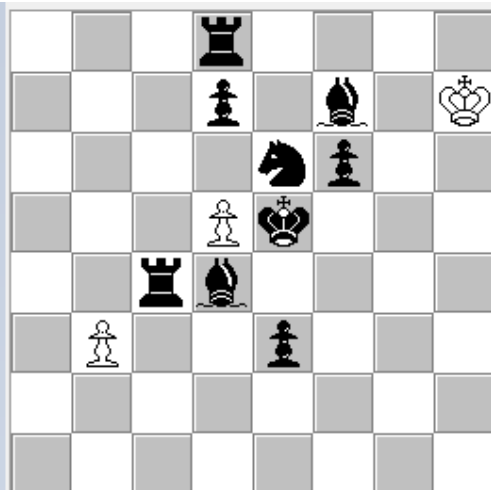
Балтийская тема
№5

1. Qd4 Bc8
2. Be3 Bf5#

1. Sf6 Sxc6
2. Kf5 Sd4#

1. Kd4 Ba6
2. Se4 Sf5#

3r4/3p1b1K/4np2/3Pk3/2rb4/1P2p3/8/8



(3+9)

h # 3,5

Тюнин Александр Дмитриевич
(Tyunin Aleksandr Dm.)

MT Benko 2020

3 HM

Тема Чумакова

№6

2 solutions

1. ... dxe6!
2. Bc3 exf7
3. Re4 f8=Q
4. Kd4 Qd6#

1. ... bxc4!
2. Be8 Kg8
3. Kd6 c5
4. Ke7 d6#

