

Entries by Christopher Jones for Helpmates section of World Championship in Composing for
Individuals 2019-2021

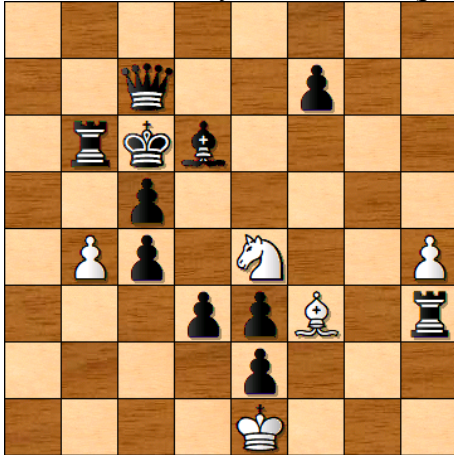
Full Name: Christopher James Austin Jones

Email address: cjajones1@yahoo.co.uk

Postal address: 11 Severn Grange, Ison Hill Road, Bristol BS10 7QA, Great Britain

Christopher Jones

1st Prize, *idee & form* 2018-19 (published in issue 142 in 2019)



H#3.5 0.2;1.1;1.1;1.1 (5+11) C+

1...h5 2.Rxh5 Sxc5+ 3.Rd5 Se4 4.R5b5 Sc5#

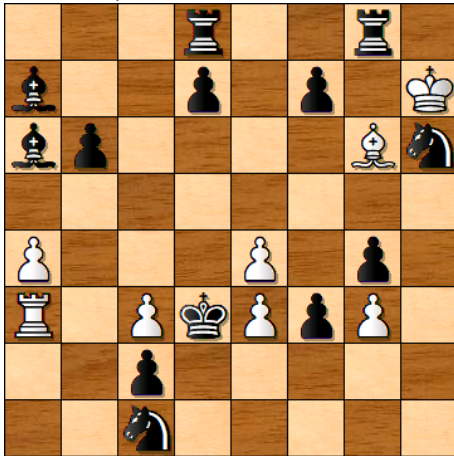
1...Bxe2 2.Rh2 Bf3 3.Rb2 b5+ 4.R2xb5 Sf6#

Switchbacks of wS (e4>c5>e4>c5) and wB (f3>e2>f3); elimination of bPs at c5 and e2 to clear lines for the bRa3; self-pinning and unpinning of bR in 1st solution; sacrificial moves of wPs, on move 1 in 1st solution and on move 3 in 2nd solution to extend lines to facilitate moves of the bR; Many Ways theme: routes from h3 to b5; different firings of the B/S battery on the mating moves

2

Christopher Jones

2nd Prize, Yves Tallec Memorial Tourney 2021



H#3.5 0.2;1.1;1.1;1.1 (8+13) C+

1...Bf5 2.Sb3 Bxd7 3.Kxc3 Be6 4.Rd2 Rxb3#

1...Rb3 2.Sf5 Rxb6 3.Kxe4 Rb5 4.Bxe3 Bxf5#

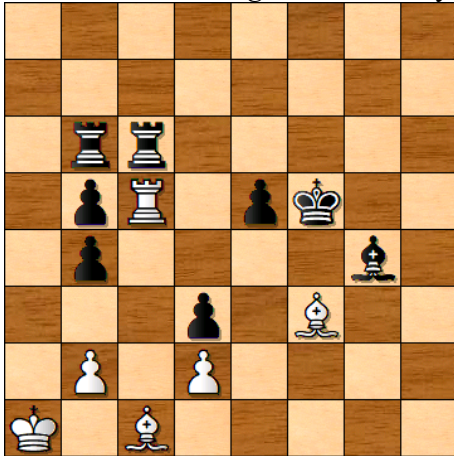
Matching diagonal/orthogonal play and strategy to open the d8-d2 and a7-e3 lines

Alternation of moves W1 and W4

3

Christopher Jones

Schach in Schleswig-Holstein May 2021



H#3 2.1;1.1;1.1 (6+8) C+

1.Rf6 Rc2 2.dxc2 d3 3.Rbe6 Be4#

1.Rg6 Be2 2.dxe2 d4 3.Rbf6 Rxe5#

Zilahi

Both captures by bPd3

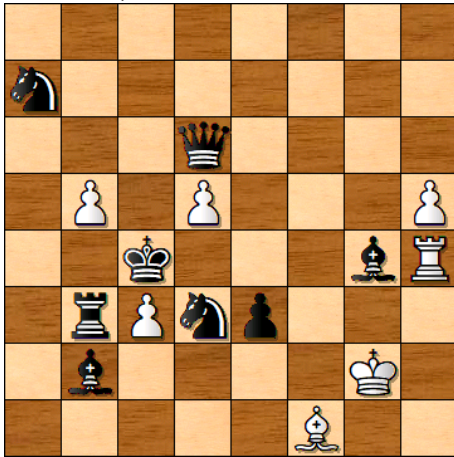
Both moves by wPd2

Black Bristol

4

Christopher Jones

3rd Prize, *Tehtavaniekka* 2020



H#3 (b)Sd3>e2 (7+8) C+

(a) 1.Kxd5 Rxg4 2.Sb4 cxb4 3.Be5 Bc4#

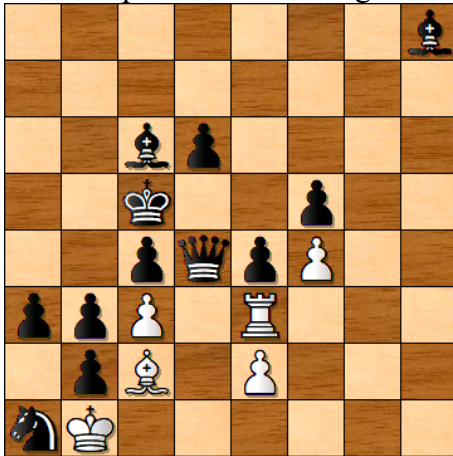
(b) 1.Kxc3 Bxe2 2.Be6 dxe6 3.Qd2 Rc4#

WPs at c3 and d5, captured in one solution, in the other capture bS/bB, thereby opening lines to facilitate self-blocks at e5 and d2

5

Christopher Jones

British Open Online Solving Masters ('BOOM') Championships, 27.12.21



H#3 2.1;1.1;1.1 (6+12) C+

1.Qxc3 Bd3 2.exd3 Re5+ 3.Kd4 e3#

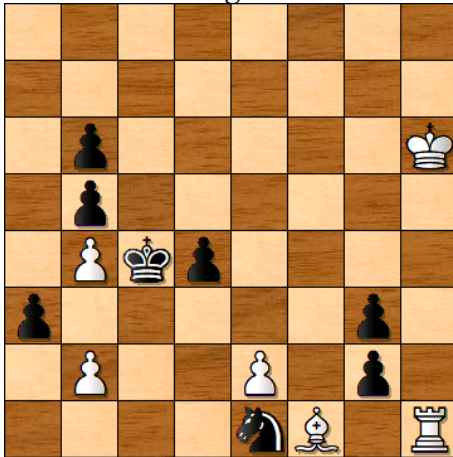
1.Kd5 Rf3 2.exf3 Bxf5 3.Qc5 e4#

Reciprocal sacrifices of wB and wR to facilitate both possible captures by Pe4, each opening a line for move W2; one/two-step moves by e2P for model mates

6

Christopher Jones

British Chess Magazine December 2021



H#3 2.1;1.1;1.1 (6+8) C+

1.gxf1=Q e3 2.Qd3 Rh4 3.Qb3 Rxd4#

1.gxh1=Q+ Bh3 2.Qf3 bxa3 3.Qc3 Be6#

Zilahi

Interchanged active/passive guarding roles of wPb2 and wPe2

2 promotions to bQ followed by echoed diagonal then orthogonal play