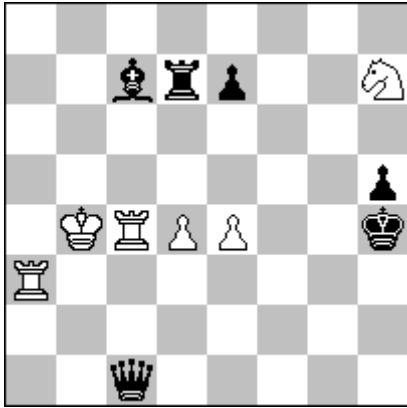


Entry No 1

Kıvanç Çefle (Turkey)

5th Tourney FRME (Federation Royale Marocaine Des Echecs), 2019

3rd Commended



h#2 Two Solutions (6+6)

FEN: 8/2brp2N/8/7p/1KRPP2k/R7/8/2q5

Solutions:

1.Qa1 d5 (A) 2.Qh8 e5 (B) #

1.Qh1 e5 (B) 2.Qa8 d5 (A) #

Content:

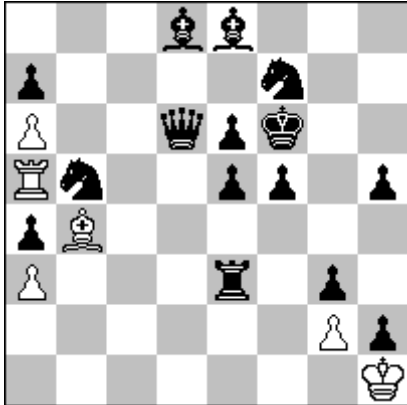
- *Bi-valve*
- *Corner-to-corner (bQ) × 2*
- *Exchange of functions (wPd4/wPe4, Interfering + Line opening / Mating battery firing)*
- *Exchange of moves (AB/BA)*
- *All corner moves by the black queen*
- *Hideaway maneuver (bQ, critical, 2) × 2*
- *Model mate × 2*
- *Battery mate × 2*

Entry No 2

Kıvanç Çefle (Turkey)

Pal Benko 90 JT, 2019

Commendation



h#3 (6+15)

a)Diagram

b) a4-->b6

c) d6-->g5

FEN: 3bb3/p4n2/P2qpk2/Rn2pp1p/pB6/P3r1p1/6Pp/7K

Solutions

a) 1.Qxa6 Rxa6 (Tempo) 2.Kg5 Rxa4 3.Kh4 Be7#

b) 1.Rxa3 Rxa3 (Tempo) 2.Kg5 Ra4 3.Kf4 Bd2#

c) 1.Sxa3 Rc5 2.Ke7 Bxa3 (Tempo) 3.Qf6 Rc7#

Content:

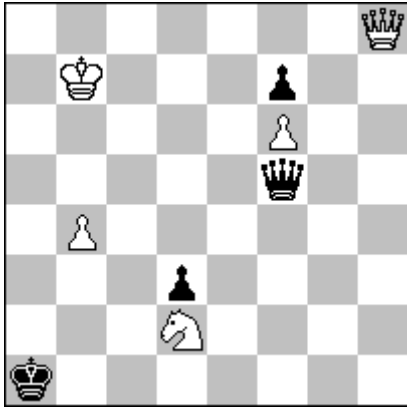
In each solution the first black move opens a line for a white piece and at the same time supplies white with a waiting move.

Enrty No 3

Kıvanç Çefle (Turkey)

“Andrei Lobusov-70” Memorial Torney

2nd Commendation



h#2 Three Solutions (5+4)

FEN: 7Q/1K3p2/5P2/5q2/1P6/3p4/3N4/k7

Solutions:

1.Qf1 Qh1 2.Qb1 Qxb1#
1.Qa5 Qa8 2.Qa3 Qxa3#
1.Qxf6 Sc4 2.Qb2 Qxb2#

Content:

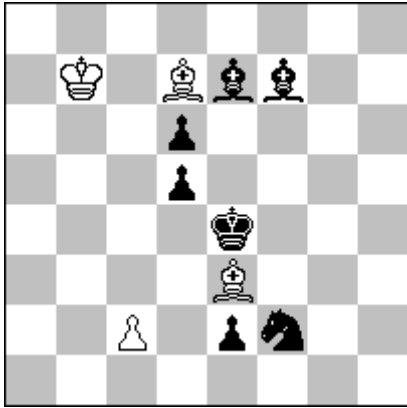
- *Active sacrifice (black) × 3*
- *Pelle move (black) × 3*
- *Sacrificial clearance (B-W) × 3*
- *Model mate × 3*

Entry No 4

Kıvanç Çefle (Turkey)

Probleemblad, 2019

Commendation



h#3 Two Solutions (4+7)

FEN: 8/1K1Bbb2/3p4/3p4/4k3/4B3/2P1pn2/8

Solutions:

1.d4 Bh6 2.Bg5 Bc6+ 3.Ke3 Bxg5#

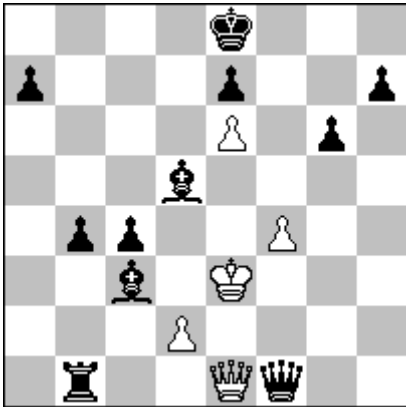
1.Ke5 Bh3 2.Sg4 Bd4+ 3.Ke6 Bxg4#

Content:

- *Active sacrifice (black, delayed) × 2*
- *Chumakov theme (b-s)*
- *Critical move*
- *Exchange of functions (bSf2/bBe7, Active sacrifice / Passive self-block)*
- *Exchange of functions (wBe3/wBd7, Guard / Mate)*
- *Maslar theme × 2*
- *Model mate × 2*

Entry No 5

Kıvanç Çefle (Turkey)



h#2 Two solutions (5+11)

FEN: 4k3/p3p2p/4P1p1/3b4/1pp2P2/2b1K3/3P4/1r2Qq2

Solutions

1.Ra1 Qxa1 2.Bh8 Qxh8#

1.Qh1 Qxh1 2.Ba8 Qxa8#

Content:

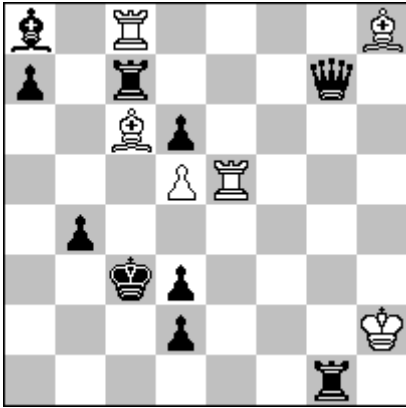
- *Active sacrifice (black) × 4*
- *Exchange of functions (bRb1/bQf1, Active sacrifice + Line opening / Interfered)*
- *Hideaway (bB, sacrificial) × 2*
- *Hideaway (bQ, sacrificial)*
- *Hideaway (bR, sacrificial)*
- *Sacrificial clearance (B-W) × 4*
- *In total, all the moves by both and black are played to corner squares, the maximum number possible (8) in a H#2 with two solutions*

Entrty No 6

Kıvanç Çefle (Turkey)

The Problemist, 2021

(H4434)



h#2

(6+10)

FEN: b1R4B/p1r3q1/2Bp4/3PR3/1p6/2kp4/3p3K/6r1

a) Diagram

b) bPd2-->b3

Solutions:

a) 1.Qg5 Ba4 2.Rc4 Rxc5#

b) 1.Rb7 Re2 2.Qd4 Bxb7#

Content:

- Active sacrifice (black, delayed) × 2
- Analogy (complete)
- Chumakov theme (q-r, simplified, 2, 2)
- Exchange of functions (bRc7/bQg7, Active sacrifice + Line opening / Pinned)
- Exchange of functions (wRc8/wBh8, Passive pin / Rear piece of mating battery)
- Exchange of functions (wRe5/wBc6, Guard + Line opening / Mating battery firing)
- Hideaway (bQ, sacrificial)
- Hideaway (bR, sacrificial)
- Pelle move (black) × 2
- Pin-mate × 2
- Battery mate × 2

