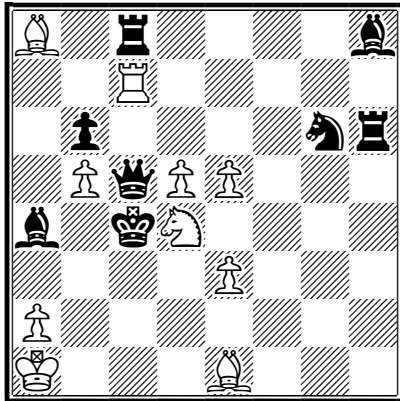


No 1

Labai, Zoltán

2437 Polski Związek Szachowy

24/8/2021



h#2

4.1.1.1

10+8

1. Sxe5 Sc6 2. Qxb5 Sxe5#
1. Sf4 Sc2 2. Sd3 Sa3#
1. Bc2 Sf5 2. Bd3 Sd6#
1. Bxb5 Bc6 2. Qxd5 Bxb5#

2 systems, the first 1.Bc2 and Sf4, the second Bxb5 and Sxe5. Model mate x2

Pin-mate x2

Battery mate x2

Double-check mate x2

Interference x2

Self-block x4

W Capture x4

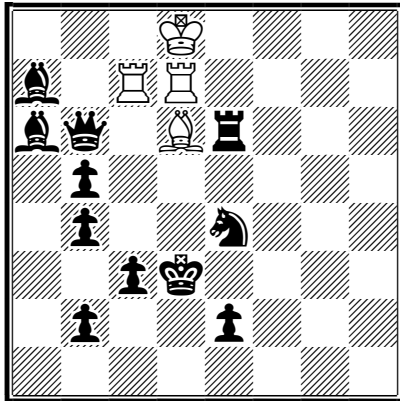
B Capture 2x

Unpin x2

labaizoltan@gmail.com

B1r4b/2R5/1p4sr/1PqPP3/b1kS4/4P3/P7/K3B3

No 2
Labai, Zoltán
 278 *Pat a Mat* 2019
 2nd Prize



h#2 b) Move b5 e5 4+11
 c=b) Move d6
 d5
 d=c) Move b2
 e3

a) Diagram
 1. b3 Bc5 2. Kc4 Rd4#

b) then b5->e5
 1. Bc4 Kc8 2. Kd4 Bc5#

c) then d6->d5
 1. c2 Bc4 2. Kc3 Rd3#

d) then b2->e3
 1. e1=S Rd6 2. Sc2 Bc4#

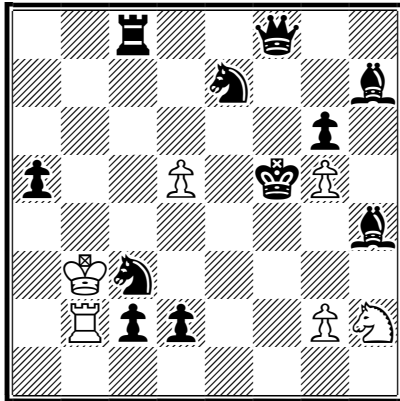
The author represents a hard HOTF-theme in
 economical form. The tempo-moves are very fine.

Jugde Tibor Ersek
 Bi-valve x2
 Battery x4
 Self-block x4
 tempo x2
 Model mate x2
 Double – check mate x2
 Echo x2

labaizoltan@gmail.com

3K4/b1RR4/bq1Br3/1p6/1p2s3/2pk4/1p2p3/8

No 3
Labai, Zoltán
J. Kupper MT 2019
 1st HM



1. Kxg5 Ka3 (Kxc2?) 2. Kh5 Rb6 3. g5 g4#
 1. Bxg5 Kxc2 (Ka3?) 2. Kf6 Rb7 3. Sf5 Sg4#

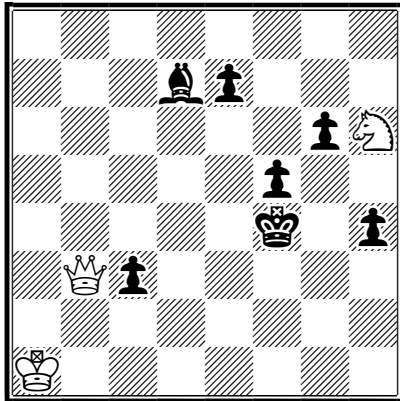
2 Analogy (good) Annihilation
 Hideaway (wK) Hideaway (wK, cap)
 Model mate x2
 Mates on the same square x2
 W-W gate opening x2
 Self-block x3
 W Capture x2
 Square vacation x 2
 Antidual x2

labaizoltan@gmail.com

h#3 2.1.1... 6+11

2r2q2/4s2b/6p1/p2P1kP1/7b/1Ks5/1Rpp2PS/8

No 4
Labai, Zoltán
Pobeda-75 JT 2020
3rd-4th Comm.



h#2 b) Move d7 e4 3+7

a) Diagram
1. Ke5 Qc4 (A) 2. Kd6 Sf7# (B)
1. Kg5 Sf7 (B) 2. Kh5 Qd1# (C)

b) Bbd7->e4
1. Ke3 Qd1 (C) 2. f4 Sg4# (D)
1. Bf3 Sg4 (D) 2. Ke4 Qc4# (A)

Cyclic change of 2 and 3 moves in the form of
AB-BC-CD-DA Gravure
Model mates x4

labaizoltan@gmail.com

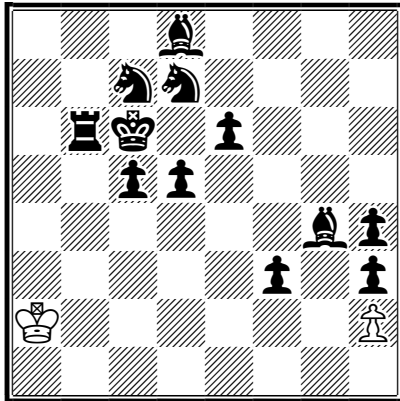
8/3bp3/6pS/5p2/5k1p/1Qp5/8/K7

No 5

Labai, Zoltán

JT Pitkanen-80 26/6/2021

9th Prize



1.f2 Ka3 2.f1S Ka4 3.Sg3 hxg3 4.Bf5 g4 5.h2 gxf5
6.h1Q fxe6 7.Qh2 e7 8.Qd6 exd8S#

Model mates
Promotios x3
Self-block

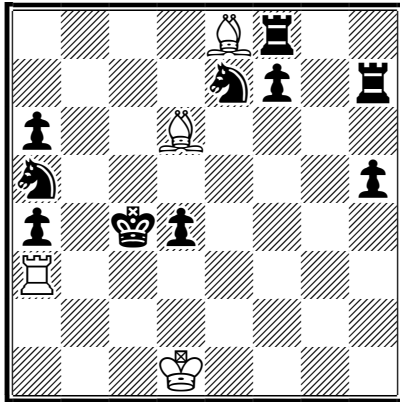
labaizoltan@gmail.com

3b4/2ss4/1rk1p3/2pp4/6bp/5p1p/K6P/8

h#8

2+12

No 6
Labai, Zoltán
 2405 *StrateGems* 2019



h#2 2.1.1.1 4+10
 b) Move a5 e4

a) Diagram
 1. Sec6 Rxa4 2. Kb5 Rb4#
 1. f6 Bg6 2. Sd5 Bd3#

b) Sba5->e4
 1. d3 Bb5 2. Kd4 Rxd3#
 1. Sc5 Kc2 2. Kb4 Rxa4#

2 systéms, the first pin mates, the second mate Bd3
 a Rxd3 on one square.
 HOTF-theme in economical form.
 Model mate x4,
 Pin-mate x2

labaizoltan@gmail.com

4Br2/4sp1r/p2B4/s6p/p1kp4/R7/8/3K4