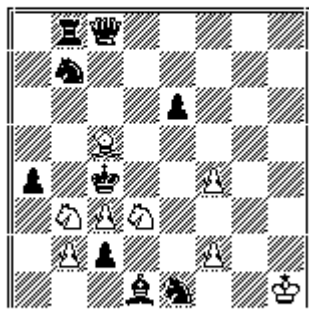


№1. WCCI 2019-2021 section h Kopyl Valery

Valery Kopyl
Buletin Problemistic 2019
aw-d Curierul Problemistic n.7
2^o Prize
(N90-2019, 254, p.43)



(8+9)

h#2

C+

1rq5/1n6/4p3/2B5/p1k2P2/1NPN4/1Pp2P2/3bn2K

5 Sol

- 1) 1.Kd5 Sd2 (A) 2.Qc6 c4# (B)
- 2) 1.Kb5 c4 (B) 2.Ka6 Sb4# (C)
- 3) 1.S:c5 (a) Sb4 (C) 2.Rb5 Sd2# (A) (b)
- 4) 1.K:b3 (b) Ba3 2.Qc4 Sc1# (c)
- 5) 1.K:d3 (c) Sc1 2.Kd2 Be3# (a)

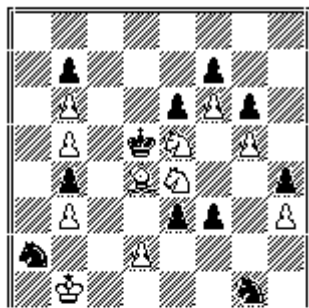
Thematic cycle in the solutions: Cycle of White's 1 and 2 moves

-1, 2, 3 solutions Zilahi Cycle - 3, 4, 5 solutions.

Star of BK - 4, 5, 1, 2 solutions

№2. WCCI 2019-2021 section h Kopyl Valery Award is unknown

Valery Kopyl
The Problemist 2021
(may n3-2021, H4438, p.113)



(11+11) h#3 W

- a) Diagram
- b) Pwq5->q4
- c) Pbe6->d6
- d) Swe5->g7

C+ 8/1p3p2/P2pPp1/P1kN1P1/P1BN2p/P2pp1P/n2P4/1K4n1

a) Diagram 1...B:e3 2.K:e5 d4+ 3.Kf5 Sd6# (MM)

b) Pbg5->g4 1...S:f7 2.K:e4 d3+ 3.Kf4 Be5# (MM)

c) Pbe6->d6 1...Sc3+ 2.K:d4 d:e3+ 3.Kc5 Sd7# (MM)

d) Swe5->g7 1...Sf5 2.Sc3+ d:c3 3.b:c3 S:c3# (MM)

Albino in a synthesis with the change of functions of the pawn of e3 in the pair of twins of a) and b), and the change of functions of the pawn of b4 in the pair of c) and d): sacrifice - blocking of the square.

In the first three solutions - cyclic Zilahi in the play of the white bishop and two knights. In the fourth solution the white pieces of thematic cycle are realized by a mate, and the thematic white pawn of d2 is sacrificed: paradox of Zilahi. Active play by the black king in the solutions, which make a cycle, in a solution underlining the paradox of Zilahi remains on the initial square.

Albino, cyclic Zilahi with a paradox, Chumakov theme:

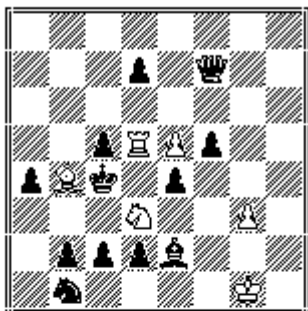
uniting subjects of 4 solutions.

Very interesting twinning showing the Albino theme (SJ). Albino, cyclic Zilahi with a paradox, Chumakov theme uniting the four solutions (V.Kopyl).

Looks a heavy setting for an Albino until one spots the cyclic Zilahi with extras. Impressive! (L.S.Blackstock) Neat Albino with model mates throughout and a super embedded cyclic (passive) Zilahi; surely the most ingenious construction of the year?! (SJGT)

№3. WCCI 2019-2021 section h Kopyl Valery

Valery Kopyl
JK V.Shevchenko 80 2019
Prize
<http://www.chess-kopyl.com.u>



(6+12) h#3 W

C+ 8/3p1q2/8/2pRPP2/pBk1p3/3N2P1/1pppb3/1n4K1

6 solutions

1...S:c5! (A) 2.K:b4 Rd4 3.Ka3 R:a4#
1...R:c5! (B) 2.Kb3 R:c2 3.Qc4 R:b2#
1...B:c5! (C) 2.K:d5 Bd6 3.Ke6 Sf4#

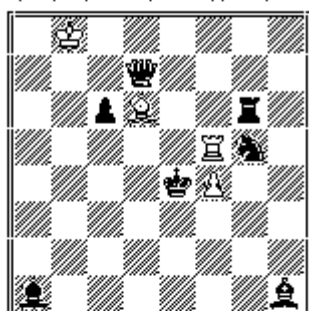
1...R:d7! 2.Kb5 Rb7 3.Ka6 S:c5# (A)
1...Kf2! 2.c:b4 Ke3 3.b3 Rc5# (B)
1...Rd4! 2.K:d4 Se1 3.Ke3 B:c5# (C)

В первой тройке вступительные хода белых тематических фигур на одно поле. (ABC). В второй тройке эти же хода, но на последнем ходу. (если рассматривать в комплексе, то Псевдо Кожакин?). Анниляция пешки "c5" во всех решениях. Эффекты: Чумакова, Зилахи, Hideaway.

In the first three there are introductory moves of white thematic pieces on one square. (ABC). In the other three, there are the same moves, but on the last move. (if considered in complex, there is a Pseudo Kozhakin?). Annihilation of C5 pawn in all solutions. Effects: Chumakov, Zilahi, Hideaway.

№4. WCCI 2019-2021 section h Kopyl Valery

Valery Kopyl
 Problemist of Ukraine 2019
 1st Prize
 (N3(61)-2019, H965, p.60)



(4+7) h#3

C+ 1K6/3q4/2pB2r1/5Rn1/4kP2/8/8/b6b 4 SOL
 I 1.Qe6 Re5+ (A)! (Be5? ... 4.Kd7) 2.K:f4 Re4+ 3.Kf5 Rf4#
 II 1.Re6 Be5 (B)! (Re5? ... 4.Kg6) 2.Kd5 Bd4 3.Kd6 Bc5#

Черный король получит мат на поле где изначально находилась фигура белых, которая дает мат, перемена функций фигур. У черных тематические фигуры активно блокируют поле "e6" в одном из решений, в втором осуществляют пассивный блок полей их начального расположения.

The black king of gets a mate on the square where initially there was a white piece which gives a mate, change of functions of pieces. At the black there are thematic pieces which actively block the square of "e6" in one of the solutions, in the second solution they carry out the passive block of the squares of their initial location.

III 1.Bf3 Bc5 2.Qd3 Be3 3.Be5+ R:e5# (A)

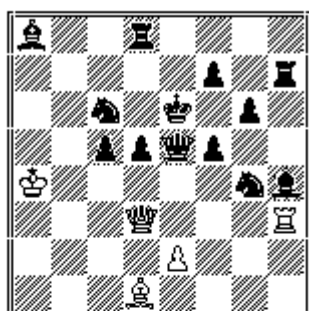
IV 1.Kd4 Rc5 2.Bd5 Rc3 3.Se4 Be5# (B) Перемена функций белых фигур: создание матового финала - мат. У черных двойное активное блокирование в решениях.

The change of functions of white pieces : creation of mating finale - the mate. As for the black there is a double active blocking in solutions.

Игра на трех тематических полях - "e6", "e5", "c5". На поле "e5" удвоенный эффект с чередованием 1-го и 3-го ходов белых. Play on the three thematic squares - "e6", "e5", "c5". On the square of "e5" the doubled effect with reciprocal change of the 1st & 3rd moves of the white.

№5. WCCI 2019-2021 section h Kopyl Valery

Valery Kopyl,
 (dedicated to M.Erenburg)
 SuperPr-m 15.09.2019 E810
 3^o Prize



(5+13) h#3 W

C+ 4 Sol. b2r4/5p1r/2n1k1p1/2ppqp2/K5nb/3Q3R/4P3/3B4

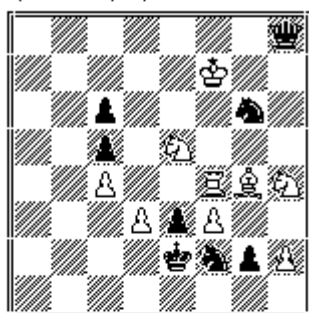
I пара I 1...Q:d5+! (A) 2.K:d5 Rd3+ 3.Kc4 Bb3 (B)#
 (I pair) II 1...Bb3! (B) 2.Qc7 Re3 3.Kd6 Q:d5 (A)#
 II пара III 1...Q:f5! (C) 2.K:f5 e3 3.Ke4 Bc2 (D)#
 (II pair) IV 1...Bc2! (D) 2.Be7 Rh6 3.Qd6 Q:f5 (C)#

Две пары решений. Чередование первых и третьих ходов белых в каждой паре. В каждой паре перемена функций в игре белого ферзя: W1 одного решения - жертва, W3 во втором решении - матующий ход, и все на одном поле. Также, аналогично, перемена функций в игре белого слона в каждой паре: W3 матующий ход в одном решении - и этот же ход - первый в другом решении, (упреждающая поддержка матующего ферзя), игра также на одном поле.

Two pairs of solutions with reciprocal change of W1 W3 in each pair. In each pair, WQ change its functions, playing on the same square: W1 - sacrifice, W3 - mating move. Also, in a similar way, WB change its functions, playing on the same square: W1 - mating move, W3 - anticipatory supporting of mating unit.

№6. WCCI 2019-2021 section h Kopyl Valery

Valery Kopyl
Csak-Majoros-Pasztor-2019
2^o Prize
(Awards p.8)



(9+8) h#3

C+ 7q/5K2/2p3n1/2p1N3/2P2RBN/3PpP2/4knpP/8

2 Sol

1. Q:h4 Bh5 2. S:f4 Sg4 3. K:f3 Se5 (switchback)#

1. Q:e5 Rf6 2. S:q4 Sf5 3. K:f3 Sd4# (MM) (Indian theme)

Образование и игра белых батарей в синтезе с темой Зилахи.
Пара фигур образуют батарею в одном решении, в втором
пассивно жертвуются.

Formation and play of the white batteries in a synthesis with the
Zilahi theme. Pair of pieces form a battery in one solution, in the
second solution they get passively sacrificed.