

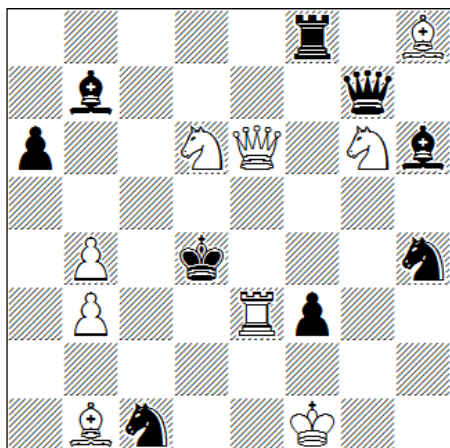
40. Deutsche Meisterschaft im Lösen von Schachproblemen

Dresden Runde 1: #2 – 20 min.

2. – 3. April 2016

Name

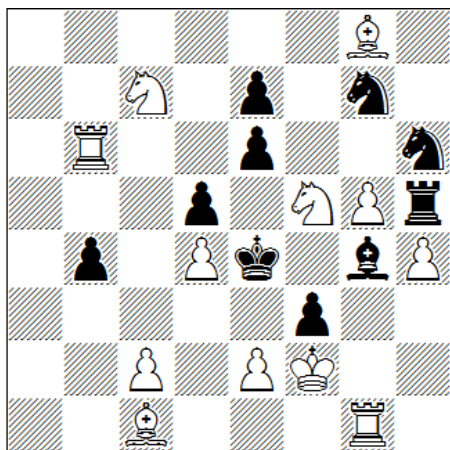
1



#2

9+9

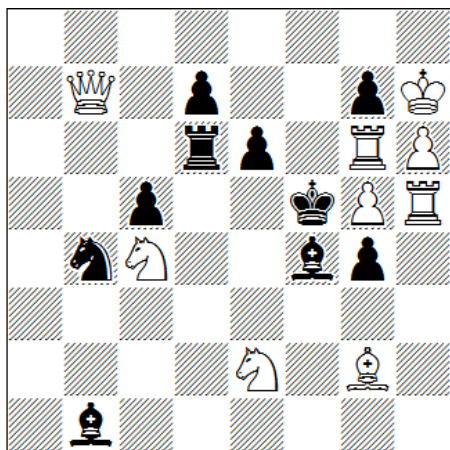
2



#2

12+10

3



#2

9+10

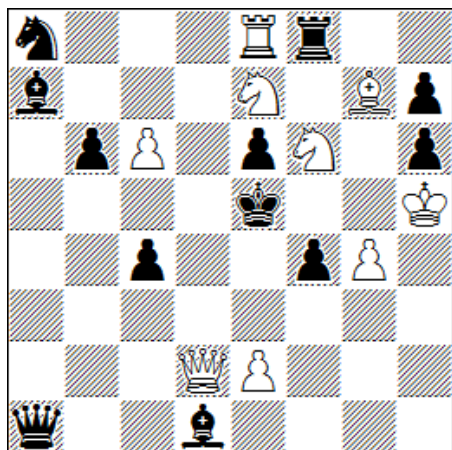
40. Deutsche Meisterschaft im Lösen von Schachproblemen

Dresden Runde 2: #3 – 60 min.

2. – 3. April 2016

Name

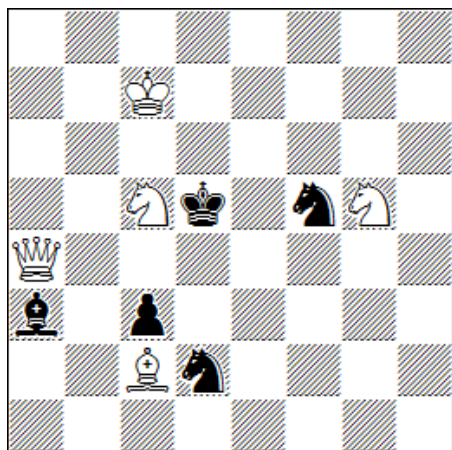
4



#3

9+12

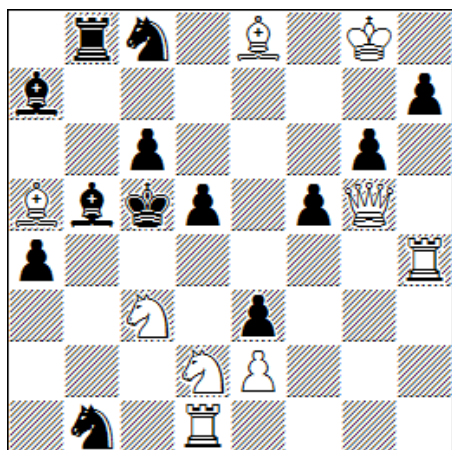
5



#3

5+5

6



#3

9+13

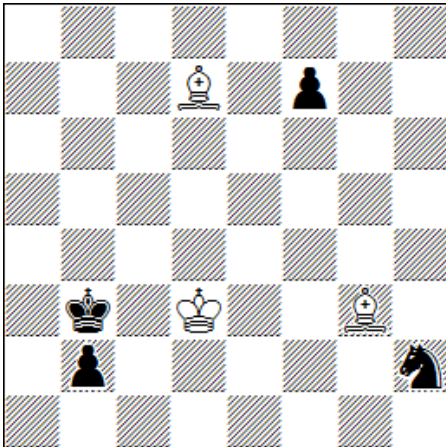
40. Deutsche Meisterschaft im Lösen von Schachproblemen

Dresden Runde 3: e.g. – 100 min.

2. – 3. April 2016

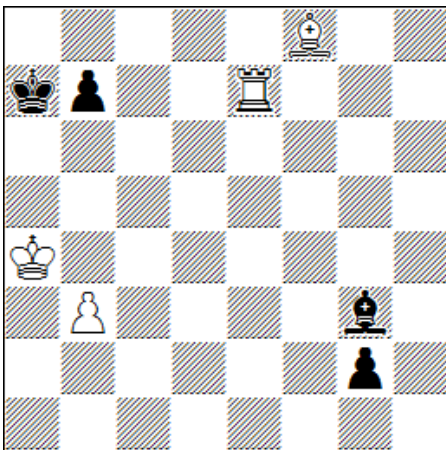
Name

7



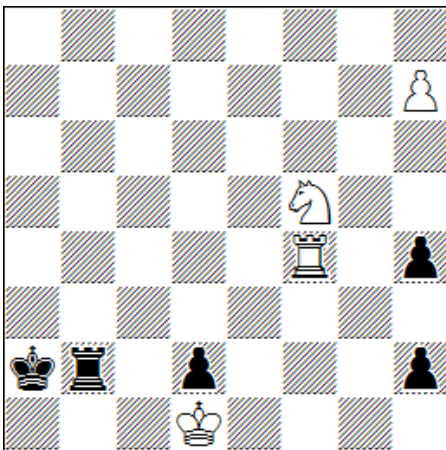
= 3+4

8



+ 4+4

9



+ 4+5

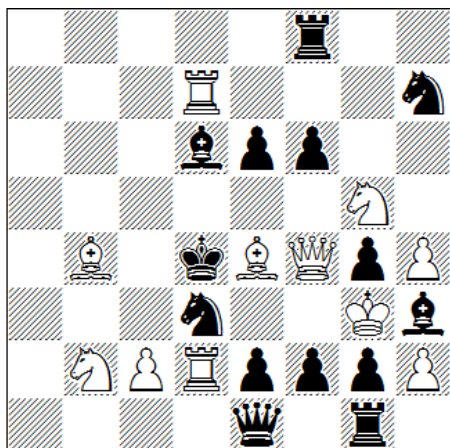
40. Deutsche Meisterschaft im Lösen von Schachproblemen

Dresden Runde 4: S# – 50 min.

2. – 3. April 2016

Name

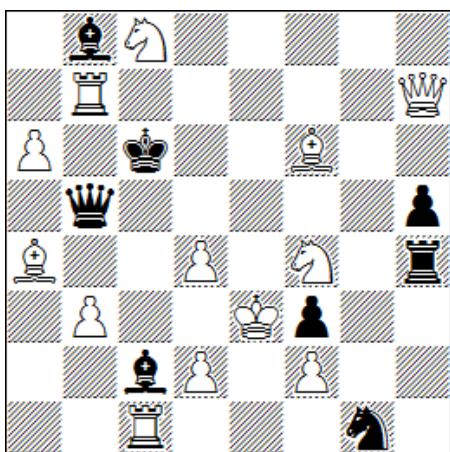
10



S#2

11+14

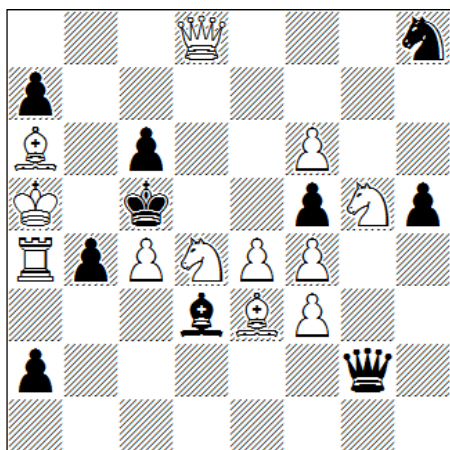
11



S#3

13+8

12



S#5

12+10

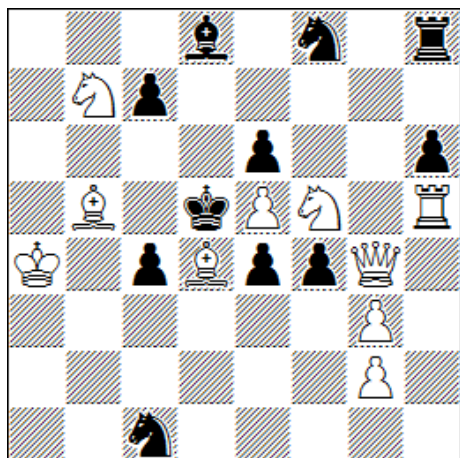
40. Deutsche Meisterschaft im Lösen von Schachproblemen

Dresden Runde 5: n# – 80 min.

2. – 3. April 2016

Name

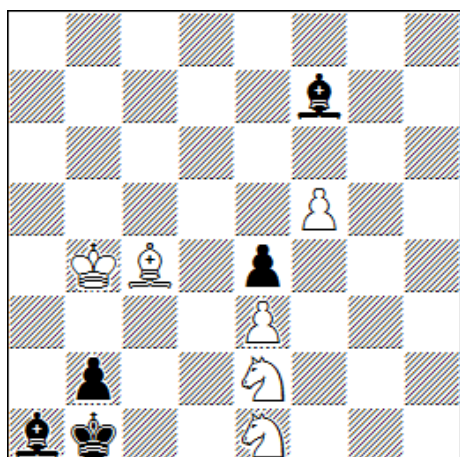
13



#4

10+11

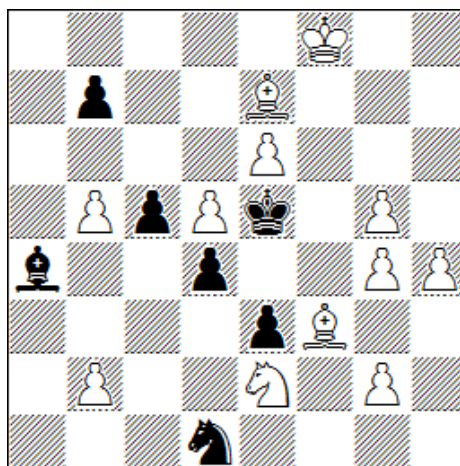
14



#5

6+5

15



#7

12+7

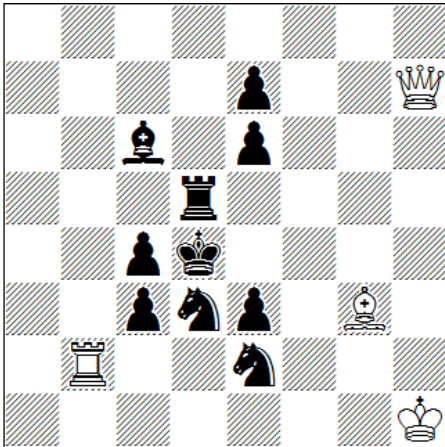
40. Deutsche Meisterschaft im Lösen von Schachproblemen

Dresden Runde 6: H# – 50 min.

2. – 3. April 2016

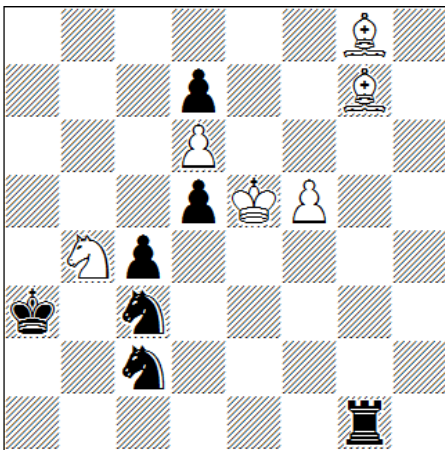
Name

16



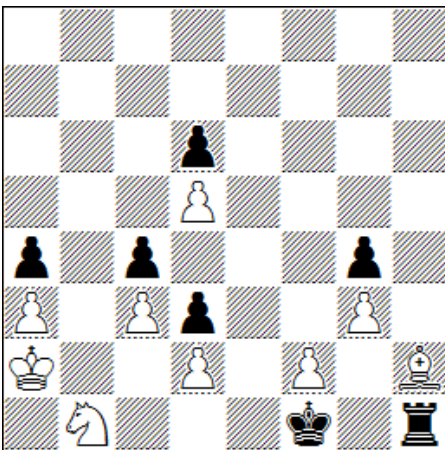
H#2 3 sol 4+10

17



H#3 2 sol 6+7

18



H#5 a) Diagr. 9+7
 b) –wBf2 8+7

@	1	2	3
16	1,5	3	5
17	2,5	5	
18	2,5	5	