

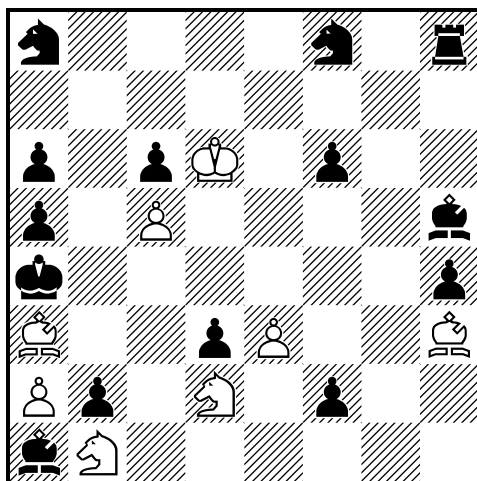
#13 (8 + 13)

C+

1. ♖b3+ ♜b5 2. ♙xd5+? ♜a4 3. ♙xc6+? ♜xc6!/♜xc6!;
 1. ♘f7? too slow;
 1. ♖f5? too slow;
 1. ♖b3+ ♜b5 2. ♙xd5+? ♜a4 3. ♙b3+ ♜b5 4. ♙xc2+ ♜c4
 5. ♖f5 ♜xf5!/dxc2!;

Solution:

1. ♙b3+! ♜b5
 2. ♙xc2+ ♜c4
 3. ♘f7 (4. ♘d6#/♘e5#) 3... ♜xf7
 4. ♙b3+ ♜b5
 5. ♙xd5+ ♜a4
 6. ♙b3+ ♜b5
 7. ♙d1+ ♜c4 (7. ♙c2? ♜c4 8. ♖f5 dxc2!)
 8. ♖f5 (9. ♖c5#) 8... ♜xf5
 (8... ♜e5 9. ♖xe5 ♜d5 10. ♙b3+ ♜b5 11. ♙xd5+ ♜a4 12. ♙b3#)
 9. ♙b3+ ♜b5
 10. ♙d5+ ♜a4
 11. ♙c6+ ♜b5
 12. ♖a2+ ♜b3
 13. ♙d5# model mate



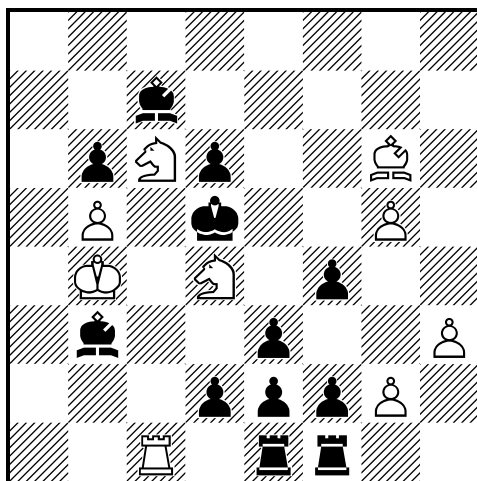
#15 (8 + 14)

C+

1. ♖g2? (2. ♗xc6#) 1... ♜e8?
 2. ♗f3 (3. ♗d1+ ♜b5 3. ♗c3#) 2...f1=♚ 3. ♗xf1 up to 9. ♗c3#),
 but: 1... ♜c7! 2. ♗xc6+ ♜b5+! 3. ♗xb5+ axb5
 4. ♗e4 (5. ♗e-c3#) 4...b4!;
 1. ♗e4 (2. ♗e-c3#) 1... ♜b5 2. ♗g2? too slow;

Solution:

1. ♗e4! (2. ♗e-c3#) 1... ♜b5
 2. ♗e-c3+ ♜c4
 3. ♗a4! (4. ♗d2+ ♜b5 5. ♗c3#) 3... ♜b5
 4. ♗g2 (5. ♗xc6+ ♜c4 6. ♗d2#) 4... ♜e8
 5. ♗a-c3+ ♜c4
 6. ♗e4 (7. ♗d2+ ♜b5 8. ♗c3#) 6... ♜b5
 (6...f1=♚? 7. ♗xf1 a4 8. ♗d2+ ♜b5 9. ♗c3+ ♜a5 10. ♗c4#)
 7. ♗e-d2 (8. ♗c3#) 7... ♜a4
 8. ♗f3 (9. ♗d1+ ♜b5 10. ♗c3#) 8...f1=♚
 9. ♗xf1 (10. ♗f-d2 ~ 11. ♗d1+ ♜b5 12. ♗c3#) 9...f5
 10. ♗d1+ ♜b5
 11. ♗c3+ ♜c4
 12. ♗f-d2+ ♜xc3
 13. ♗b1+ ♜c4
 14. ♗b3+ ♜b5
 15. ♗c3#



#14 (9 + 12)

C+

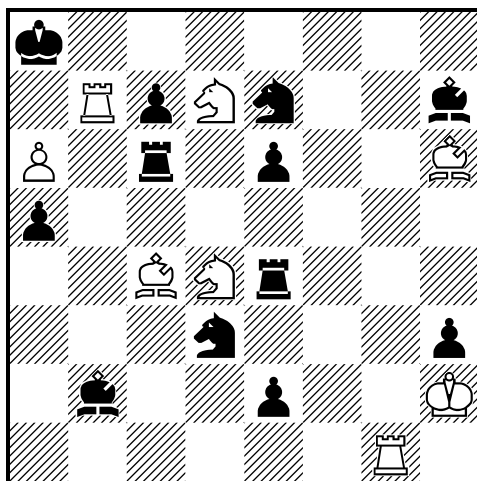
If ♔g6 was on the f5 square, White could play: 1. ♖e6 ~ 2. ♖xf4#;

1. ♖f5? too slow;

It takes a complex manoeuvre to transfer the ♔g6 to the f5 square:

Solution:

1. ♔h5! (2. ♖f3#) 1... ♚c2
 (1... ♜e4? 2. ♖f3+ ♜d3 3. ♖c3#)
2. ♖f7+ ♜e4
3. ♖e6 (4. ♖g6+ ♜d5 5. ♖xc7#/♖xf4#) 3... ♜f5
4. ♖c-d4+ ♜e4/♜e5
5. ♖f3(+) ♜f5
6. ♖e-d4+ ♜e4
7. ♖g6+ ♜d5
8. ♖e8 (9. ♖c6#) 8... ♜e4
9. ♖c6+ ♜d3
 (9...d5? 10. ♖d7 ♜d6 11. ♖c3 d1=♚+ 12. ♖xc2 ~ 13. ♖f5#)
10. ♖d7 (11. ♖f5#) 10... ♜e4
11. ♖f5+ ♜d5
12. ♖e6 (13. ♖xc7#/♖xf4#) 12... ♜xf5
13. ♖xf4+ ♜e4
14. ♖c4#



#17 (8 + 12)

C+

1. ♖b8+ ♜a7 2. ♗b5+ ♜xa6 3. ♖b6+? cxb6!/ ♖xb6!; White must get rid of these two defenders.

1. ♖b8+ ♜a7 2. ♗b5+ ♜xa6 3. ♗xc7+ ♜a7 4. ♗b5+ ♜a6 5. ♗d4+ ♜a7 6. ♗xc6+? ♜xc6!;
 but not: 5... ♖xc4? 6. ♖b6+ ♜a7 7. ♗b5+ ♜a8 8. ♖b8#;

To force this move ♖cxc4, ♜e7 must be deflected away from the cover of ♖c6.

1. ♖g8+? ♜xg8!

Therefore ♜h7 must be first deflected away from the cover of the g8 square.

1. ♖b8+ ♜a7 2. ♗b5+ ♜xa6 3. ♗d4+ ♜a7 4. ♖g5? (5. ♖xa5+) 4... ♜f5?

now White could continue with: 5. ♖g8! ~ 6. ♖a8+ ♜b7 7. ♖g-b8#;

but Black defends with: 4...e1=♚! After 5. ♗b5+ ♜a6 6. ♗c3+ White blocks the diagonal e1-a5,

but Black now defends with 6... ♖exc4! From White's point of view the "wrong" rook captures the bishop!

To prevent the strong defensive move e1=♚, at first ♖e4 must be deflected away.

Solution:

1. ♖b8+! ♜a7 2. ♗b5+ ♜xa6

3. ♗xc7+ ♜a7 4. ♜e3+ ♖xe3 (deflects ♖e4 away)

5. ♗b5+ ♜a6 6. ♗d4+ ♜a7

7. ♖g5! (8. ♖xa5+ ♖a6 9. ♖xa6#) 7... ♜f5

(7...e1=♚? no longer defends!) 8. ♗b5+ ♜a6 9. ♗c3+ ♜a7/ ♖xc4

10. ♖xa5+/ ♖b6+ ♖a6/ ♜a7 11. ♗b5#/ ♖xa5#;

7...e5? 8. ♗b5+ ♜a6 9. ♖g7 up to 14.#)

8. ♗b5+ ♜a6 9. ♗d6+ ♜a7

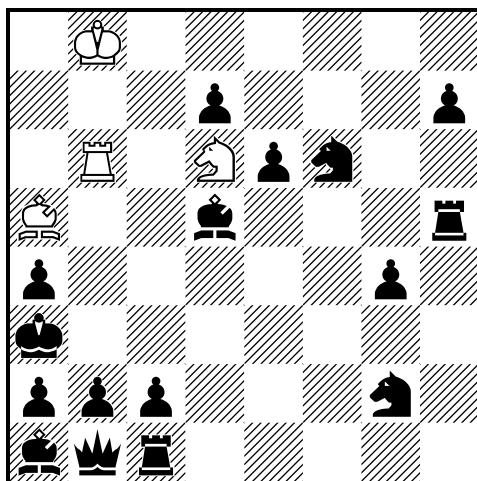
10. ♖b7+ ♜a8 11. ♖g8+! ♜xg8 (deflects ♜e7 away)

12. ♖b8+ ♜a7 13. ♗b5+ ♜a6

14. ♗d4+ ♖xc4 15. ♖b6+ ♜a7

16. ♗b5+ ♜a8

17. ♖b8# model mate



#16 (4 + 16)

C+

1. ♖b4+ ♜b3 2. ♙d2+ ♚a3 3. ♜b4 (4. ♗b5#) 3... ♜b3
4. ♜xg4? (5. ♙b4#) 4... ♜xg4!
1. ♜b4? (2. ♗b5#) 1... ♜b3 2. ♜b5 (3. ♙b4#) 2... ♜d5!
3. ♜b7 (4. ♗b5#) 3... ♜b6! 4. ♜xb6 ♜xa5!

Solution:

1. ♖b4+! ♜b3
2. ♙d2+ ♚a3
3. ♜b4 (4. ♗b5#) 3... ♜b3
4. ♜b5 (5. ♙b4#) 4... ♜d5
(4... ♜b5+? 5. ♗xb5#;
4... ♜d5? 5. ♜b7 ♜c3 6. ♙xc3 ♜d5 7. ♜b4 ♜b3 8. ♜b6 ♜d5
9. ♙f6! ♜f5 10. ♙e7 ♜f8+ 11. ♗c8+ d6 12. ♙xd6#)
5. ♖b4+ ♜b3
6. ♙a5+ ♚a3
7. ♙d8 (8. ♗c4+ ♜xc4 9. ♙e7+ d6 10. ♙xd6+ ♜c5 11. ♙xc5#) 7... ♜g8
8. ♙b6 (9. ♙c5#) 8... ♜b3
9. ♙a5 (10. ♙b4#) 9... ♜d5
10. ♖b4+ ♜b3
11. ♙d2+ ♚a3
12. ♜b4 (13. ♗b5#) 12... ♜b3
13. ♜xg4 (14. ♙b4#) 13... ♜f4
14. ♜xf4 ♜c4
15. ♜f3+ ♜b3 16. ♗c4#
15... ♜d3 16. ♜xd3#
14... ♜d5 15. ♗b5+ ♚b3 16. ♜b4#