

6 Problems for the 2019-2021 WCCI

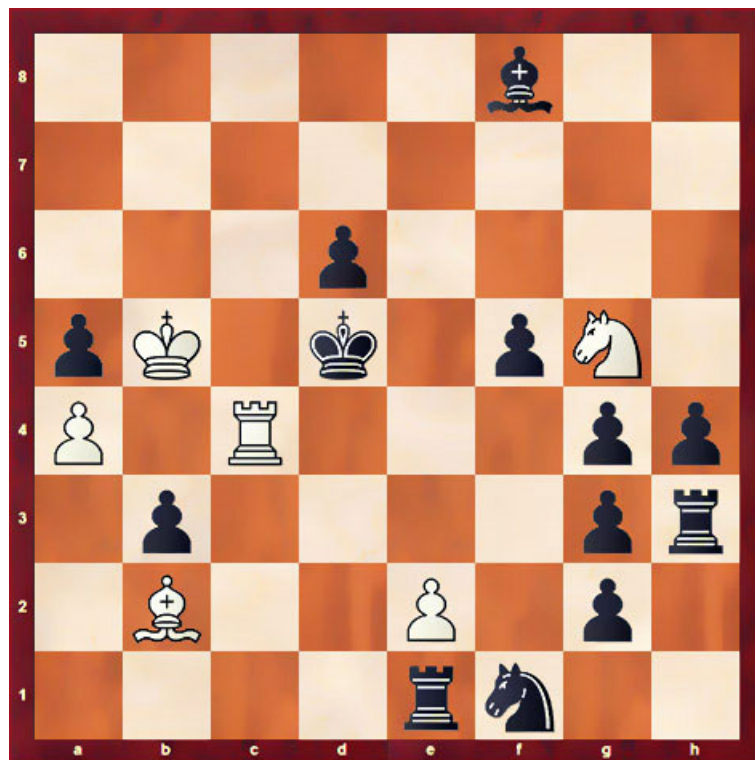
From Olivier SCHMITT

Postal address : 27 rue Jean Louis BALZAC, 83500 LA SEYNE SUR MER (FRANCE)

Email : olsc@orange.fr

Problem n°1 :

STRATEGEMS - 2020



6+13 vvv

#12

N° M1692 - SG 92 - Vol 23

C+

1st/2nd Prize

Tries : 1Tf4 ? (menace 2Txf5 mat) 1..Txe2 ! (1..Ce3 ? 2Ff6 Td1 3Txf5+);

1Ff6 ? (menace 2Td4 mat) 1..Td1 ? 2Tf4 etc. but 1..g1=D refute ; 1Tc3 ? (menace 2Td3 mat) 1..Td1 !

Key : 1Td4+ Re5 2Txc4+ ! Rd5 3Td4+ Re5 4Tc4+ Rd5 then 5Tc3 ! g1=D [now 5..Td1 ? 6Tf3 ! Ce3 (f4) 7Txf5+ (e4+)] 6Td3+ Dd4 7Txd4+ Re5 8Tc4+ Rd5 9Ff6 ! Td1 and 10Tf4 ! Ce3 11Txf5+ ! Cxf5 12e4 model mat

White force a decoy of the rook e1 in the three foreplans with the help of two switchbacks by the active white rook.

(5..Fg7 6Td3+ Fd4 7Fxd4 Td1 8Txd1 Ce3 9Td3 Cc2 10Ff6/h8+ Cd4+ 11Txd4 mat)

Problem n°2 :

STRATEGEMS - 2021



8+13 vv

#15

N° M1728 - SG 94 - Vol 24

Tries : 1Cxf6 ? (menace 2Cf5 mat) 1..Rg3 ? 2Ce4+ Rh4 3f8=D Cxf8 4Fg5 mat but 1..Cxf6+ simply refute also 1Cxd6 ? Rg3 ? 2Ce4+ Rh4 3Txf6 ! Cxf6+ 4Cxf6 etc. but 1..cxd6 ; 1f8=D ? (menace 2Cxf6 or 2Fg5+) 1..Cxf8 ? 2Cxf6 etc. but 1..d1=D or 1..h1=D also refute.

White must first establish a better menace :

Key : 1**Cf2 !** (menace 2Cf5 mat) 1..**Rg3** 2**Ch1+ Rh4** 3**Tb6 !** (menace 4Tb4 mat) 3..**cxb6** 4**Cf2 Rg3** 5**Ce4+ Rh4** 6**Cxd6 Rg3** 7**Ce4+ Rh4** 8**Cf2 ! Rg3** 9**Ch1+ Rh4** then 10**f8=D !** (menacing now 11Db4 mat) 10..**Cxf8** (10..**Fxe2** 11**Db4+ Fg4** 12**Cf5** mat) 11**Cf2 Rg3** 12**Ce4+ Rh4** and 13**Cxf6 Rg3** 14**Ce4+ Rh4** 15**Fg5** model mat

The knight e4 does four switchbacks in a logical form : opening the f8/b4 line in order to force the knight h7 decoy.

3..**c5** 4**Cf2 Rg3** 5**Ce4+ Rh4** 6**Cxd6 Rg3** 7**Ce4+ Rh4** 8**Txf6 !** (menace 9**Tf4** mat) 8..**Cxf6+** 9**Cxf6 Rg3** 10**Ce4+ Rh4** 11**Fg5** mat. It's the opened a6/f6 line which is here exploited.

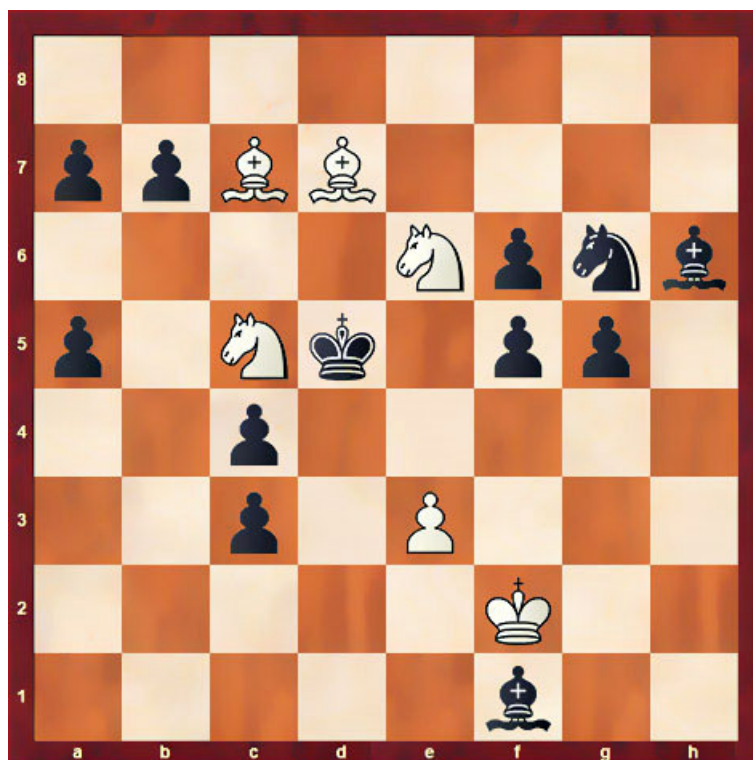
Tested OK with *Gustav* allowing three flight squares maximum for the black king during the solution.

Problem n°3 :

MEMORIAL YVES TALLEC - 2021

PHENIX N°316

1st Prize



6+12 v

#16

Try : 1e4+ ? fxe4 2Ca4 (menace 3Cxc3 mat) 2..e3+ ! with check so 3Cxc3 mat cannot be played.

Key : 1Ca4 Re4 2Cec5+ Rd5 3Cxb7 Re4 4Cbc5+ Rd5 5Ca6 Re4 6C4c5+ Rd5 7Fxf5 !
(menace 8Fe4 mat) 7..Fg2 ! 8Fe6+ Rc6 9Fd7+ Rd5 10Ca4 Re4 11C6c5+ Rd5 12Ce6 Re4
13Cac5+ Rd5 and 14e4+ ! Fxe4 15Ca4 Fe~ (without check !) 16Cxc3 model mat

Four switchbacks allow to force a block of the e4 square while avoiding a white damage in the foreplan.

(7..**Rc6** 8Fe4+ Rb5 9Fc2 Rc6 10e4 ~ 11Fa4 mat ; 7..**Fd3** 8Fe6+ Rc6 9Fd7+ Rd5 10Ca4 Re4 11Cxc3 mat ; 13..**Rf5** 14Ce~ mat)

Tested OK with *Gustav* allowing three flight squares maximum for the black king during the solution.

Problem n°4 :

SCHACH - 2019

N° 19055 - September



7+12 vv

#18

Tries : 1Ff5 ? (menace 2Fg4+ Rg6 3Ch4 mat) 1..e1=D or 1..Cxf6 because the bishop d2 protect the pawn f4 ; 1Fg8 (menace 2Fxf7 mat) 1..Rg6 2Ch4+ Rh5 3Cf3 ? Rg6 4Fh7+ Rh5 5Txb4 (menace 6Cg3+ ! fxg3 7Th4 mat) 5..e1=D ! 6Tb5+ e5 !

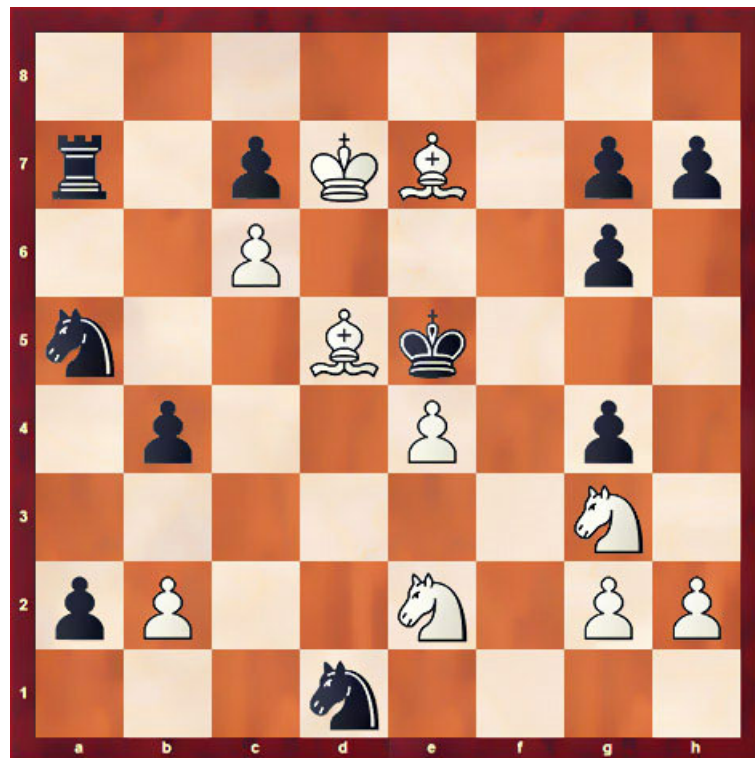
Key : 1Fg8 ! Rg6 2Ch4+ Rh5 3Cf5 Rg6 4Cxe7+ ! Rh5 5Cf5 Rg6 6Ch4+ Rh5 7Cf3 ! Rg6 8Fh7+ Rh5 then 9Txb4 ! (menacing now 10Cg3+ and 10Tb5+) 9..Fxb4 10Fg8 Rg6 11Ch4+ Rh5 12Cg2 ! Rg6 13Fh7+ Rh5 and 14Ff5 ! Cxf6 pre-block (now 14..e1=D 15Fg4+ Rg6 16Cxf4 mat) 15Cxf4+ Rh4 16Cg2+ Rh5 17Cg3+ Rg5 18h4 model mat

White force the bishop d2 to lose control of the f4 square in the two foreplans with the help of three switchbacks.

Tested OK with *Gustav* allowing three flight squares maximum for the black king during the solution.

Problem n°5 :

SCHACH - 2020



N° 19149 - February

2nd Prize

10+11 vv

#14

Tries : 1Fg5 ? (menace 2Ff4+ Rf6 3e5 mat) 1..Cxc6 ! ; 1Ff8 ? (menace 2Fxf7 mat) 1..Rf6 2e5+ Rxe5 3Fe6 (same menace) 3..Rf6 4Ce4+ Re5 5Cd2 Rf6 6Fe7+ Re5 7Fg5 (menacing now 8Ff4+ Rf6 9Ce4 mat) 7..Cf2 8Ff4+ Rf6 9Cf3 (menace 10Fe5 or 10Fg5 mat) 9..gxf3 !

Key : 1Fc5 ! (menace 2Fd4 mat) 1..Rf6 2h4 ! (same menace) 2..gxh3 3Fe7+ Re5 then 4Ff8 ! Rf6 5e5+ ! annihilation 5..Rxe5 6Fe6 ! Rf6 7Ce4+ Re5 8Cd2 ! Rf6 9Fe7+ Re5 and 10Fg5 ! Cf2 11Ff4+ Rf6 12Cf3 g5 13Fxf5+ Rg6 14Cf4 model mat

White force a black decoy in the first foreplan then a white annihilation in the second one. It allows to change the mat menace of the main plan in order to validate it (forcing 10..Cf2 instead of 10..Cxc6). An appropriate replacing of the knight g3 to d2 is also necessary.

(1..Cxc6 2Fxc6 Rf6 3e5+ Rg5 4Fe7+ Rh6 5Ce4 g5 6Re6 ! (menace 7Fxf5+) mate in #3 ; 1..Cb3 2Fxb3 Rf6 3Fe7+ Re5 4Fg5 Ta5 5Re7 ; 2..Cxc6 3Rxc6 Ta6+ 4Rd7 Td6+ 5Fxd6 cxd6 6Rxd6 g5 7h5 g6 8h6 ~ 9e5 mat ; 5..Rg5 6Fe7+ Rh6 7Ce4 g5 8g4 or 8Ff7 mate in #3 ; 10..Cc3 11bxc3 ~ 12Ff4+)

Tested OK with *Gustav* allowing four flight squares maximum for the black king during the solution.

Problem n°6 :

SCHACH - 2020



N° 19199 - May

3rd Prize

6+14 vv

#23

Tries : 1Tb5+ Ra6 2Tb8+ Ra5 3Cc4+ Ra6 4Cxd6+ Ra5 5Tb5+ ? Rxa4 ! (5..Ra6 ? 6Td5+/xg5+ Rb6 7a5 mat) doesn't work because 6Fc2+ can't be played so 1Tb5+ Ra6 2Tb4+ ? Ra5 3c3 (menace 4Cc4+ Ra6 5Cd2+ Ra5 6Cb3 mat) fail because of 3..e1=C ! and 3..d5 !

Key : 1Tb5+ Ra6 2Tb8+ Ra5 3Cc4+ Ra6 4Cxd6+ Ra5 5Cc4+ Ra6 6Cb2+ Ra5 7Tb5+ Ra6 8Tb3+ Ra5 9Fb5 (menace 10Cc4 mat) 9..Rb6 10Fxe2+ Ra5 11Fb5 Rb6 12Fd3+ Ra5 then 13Tb5+ Ra6 14Tb4+ ! Ra5 15c3 ! dxc3 and 16Tb5+ Ra6 17Tb8+ Ra5 18Cc4+ Ra6 19Cd6+ ! Ra5 20Tb5+ Rxa4 21Fc2+ Ra3 22Cc4+ Ra2 23Ta5 mat

The switchbacks of three white pieces allow to unblock the c2 square in the two foreplans.

(3..Rxa4 (or 5..Rxa4) 4c3 Cb7 5Txb7 Tb1 6Fc2+ or 6Txa7+ ; 15..Tb1 16Tb5+ Ra6 17a5 ! (menace 18Tb6+ Rxa5 19Ta6 mat) 17..dxc3 18Tb6+ Rxa5 19Cc4+ Ra4 20Fc2+ Tb3 21Fxb3 mat)

Tested OK with *Gustav* allowing one flight square maximum for the black king during the solution. Also tested with *Stockfish 14* and *ChestUCI*.