

WORLD FEDERATION FOR CHESS COMPOSITION

65th World Congress (WCCC), Batumi, Georgia

2-9 September 2023



AGENDA

1. For the first session (* with documents in Annexes):

- 1.1. Opening address
- 1.2. * Tributes
- 1.3. Verification of attendance and voting rights
- 1.4. Approval of the Minutes of the 64th Meeting (Fujairah, 2022)
- 1.5. * President's review of the year
- 1.6. * Legal and financial matters
- 1.7. Delegates' review of the year on national level
- 1.8. Membership of the standing committees, outline of business for the week from spokesmen, timetable for committee meetings
 - WCCT
 - WCCI
 - Solving
 - Album
 - Qualifications
 - Computer matters
 - Studies
 - Youth
 - Codex

1.9. Proposals and business carried forward

Part I – for committees to discuss

- 1.9.1.* FIDE Album Committee Agenda 2023
- 1.9.2.* Shankar Ram: FIDE Album Errata (proposal)
- 1.9.3.* Andrey Frolikin: Missing sections in FIDE Album (proposal)
- 1.9.4.* Group: WCCT score calculation change (proposal)
- 1.9.5.* Andrew Buchanan: Codex changes (proposal)
- 1.9.6.* Vlaicu Crisan: Synthetics as a new section of YCCC 2024 (proposal)
- 1.9.7.* Presidium: Youth project 2024/25 (proposal)
- 1.9.8.* Brian Cook: Online solving (YCSC) as a new part of YCCC program
- 1.9.9.* Vidmantas Satkus: World Championship for Fairy Solving (proposal)
- 1.9.10.* Vladimir Afromeev: World Solving Championship for Women (proposal)
- 1.9.11. Solving Committee proposals (to be defined)

Part II – for the whole Assembly

- 1.9.11.* Valery Kopyl: 9 Ukrainian proposals/demands, including those related to sanctions
 - 1.9.12.* Dinu-loan Nicula: Solving in the context of FIDE Youth events (information)
 - 1.9.13. Future WCCC, WCSC and ECSC (to discuss)
- 1.10. Miscellaneous
- 1.10.1. Report on the International Solving Contest 2023 (Steinbrink)
 - 1.10.2. Report on the ECSC (Klasinc)
 - 1.10.3. World Chess Solving Championship 2023: introductory announcements (Steinbrink)

2. For subsequent sessions (* with documents in Annexes):

- 2.1. World Solving Cup 2022-23 and 2023-24 (Steinbrink)
- 2.2. Report by the WCSC 2023 Director (Steinbrink)
- 2.3.* Presidium: Statutes changes to allow easier work (proposal)
- 2.4. Election of Auditor and Reserve Auditor for the following year
- 2.5.* Financial report, balance sheet, auditor's report, budget for the following year
- 2.6. Report by the spokesman of each committee on business covered
- 2.7. Discussion of proposals and business listed above
- 2.8. Suggestions of the Qualifications committee re. new titles
- 2.9. Decisions regarding future meetings: WCCC, WCSC & ECSC
- 2.10.* Jiří Jelinek: Chess Composition Day (information to discuss)
- 2.11.* Andrey Frolikin: Overall positions of composers and solvers (to discuss)
- 2.12. Any other business
- 2.13. Closing summary and vote of thanks

WCCC 2023 Commemoration List (Batumi, Georgia)

Jens Künzelmann	Germany	(01.11.1965 – 21.06.2022)
Marco Bonavoglia	Italy	(14.05.1953 – 05.12.2022)
Gijsbert Jan van Breukelen	Netherlands	(27.02.1946 – 21.12.2022)
Ilkka Sarén	Finland	(16.05.1940 – 24.12.2022)
Anna O'Donovan	Great Britain	(17.09.1956 – 26.12.2022)
Paul Kenneth Bissicks	Great Britain	(25.05.1952 – 12.01.2023)
Werner Issler	Switzerland	(20.09.1933 – 02.01.2023)
John Francis Ling	Great Britain	(16.06.1927 – 13.02.2023)
František Korostenski	Czech Republic	(26.03.1949 – 17.02.2023)
Wilhelm Bleeck	Germany	(03.01.1948 – 06.03.2023)
Jordi Breu	Spain	(25.10.1927 – 23.03.2023)
Thomas Ristoja	Finland	(19.09.1949 – 29.03.2023)
Michael Lipton	Great Britain	(13.02.1937 – 01.04.2023)
Evgeny Fomichyov	Russia	(13.04.1964 – 09.05.2023)
Horacio Amy Meylan	Argentina	(01.06.1923 – 12.06.2023)
Vasil Krizhanivsky	Ukraine	(06.07.1972 – 25.06.2023)
Beat Züger	Switzerland	(03.06.1961 – 04.07.2023)
Kauko Virtanen	Finland	(25.12.1931 – 24.07.2023)
Ivan Měchura	Czech Republic	(03.05.1946 – 2023)
Neculai Chivu	Romania	(11.07.1938 – 28.07.2023)

WFCC activities December 2022 – September 2023

1. General problems

In February, Presidium discussed some general problems and approaches to solve them.

1.1 Our human resources are insufficient even for regular activities. We have less and less of composers, judges, organizers, editors, subscribers, volunteers ... When the hostilities in Ukraine started, our small and poor society became two times small and poorer. Volunteers are getting older and exhausted, without a mechanism to replace them. For instance, when the ISC Central Controller Axel Steinbrink decided to step down after 14 years, the Solving Committee couldn't find a replacement during all the year. At the same time, there is general tendency to extend activities, often counting on unknown executors. **We should be concentrating on priorities in the existing program, and accept new projects only when working groups are guaranteed in longer terms.**

1.2. Less of organizers are willing to host WCCC, WCSC & ECSC. They should take care of more and more events, while facing no rise of popularity, neither in number of delegates, nor of solving teams. Both WCSC & ECSC engage about the same national teams, and only few of them can afford competing in both. The prices keep rising, especially on the West, and countries in the East face different kinds of problems. **Do we need two expensive yearly events under any conditions and at any price?**

1.3. The modest WFCC budget leaves no funds for more ambitious program. **Each development project should be based on priority goals and assured sponsorship.**

1.4. Chess composers are in worse position than solvers (see Annex 2.11). Once founded as a body to take care of chess composition (see Annex 2.3), we have only one Committee devoted to development of chess composition – the Studies Committee. **Is it time to establish at least the Fairies Committee, to deal with growing issues in this genre?**

1.5. Media coverage of WFCC activities was more attractive this year, especially reports from the World Solving Cup, directed by Roland Ott, with photo galleries and interesting additional facts. This trend was extended with 11 FIDE reports (now in the new WFCC [Media section](#)), and 42 posts on the WFCC social networks. Attracting new generations asks for an organized work. **It would be good to form a Media Team, including young people with skills and affinities for that.**

2. Achievable projects

2.1. Since solving is where it usually starts, **the highest priority is the project of solving in the context of FIDE Youth events (Annex 1.9.12)**, where more than 1.000 juniors compete during a year.

2.2. Attracting new composers is a much more difficult task. Now, with the help of the Fujairah Government, **we have a chance to make an inviting Youth project (Annex 1.9.7)**. Human resources are not a problem in the large YCCC team of enthusiastic judges and organizers.

3. Regular activities

3.1. Legal and financial matters

Some activities were forced by the change of the Presidium. The most demanding process is to settle legal and financial matters (Annex 1.6). Vice-President Abdulla Ali Aal Barket managed to open WFCC main office in Fujairah and to get a yearly financial support from the Fujairah Government. This sponsorship of 5.000 EUR is planned for more important WFCC projects. Opening a new bank account in the UAE is still under procedure.

3.2. New Treasurer and new Secretary

According to our Statutes (the part we suggest to change, see Annex 2.3), a Treasurer has to be a member of the Presidium. It means that Thomas Maeder, our dedicated Treasurer for more than a decade, had to be replaced by one of the vice-presidents. Until possible changes of Statutes, Vice-President Abdulla Ali Aal Barket accepted this post, and Julia Vysotska accepted to volunteer in preparing the financial report and future budget (Annex 2.5).

A new Secretary had to be appointed. Neal Turner was Secretary since 2018, when he replaced Günter Büsing, and now he is the Finish delegate. Presidium appointed Mohammad Alhallak, the Fujairah Chess & Culture Club director, as the new WFCC Secretary. Mohammad is an experienced international chess organizer, with IT and social skills, currently responsible for all WFCC posts in social networks.

3.3. New WFCC delegates

Finland – Neal Turner replaced Honorary member Hannu Harkola

Italy – Marco Guida replaced Francesco Simoni

Kazakhstan – Sergej Smotrov replaced late Kir Sivertsev

Moldova – Mihail Croitor – filled the vacant post

Mongolia – Bilguun Sumiya replaced Tongon Sumiya

North Macedonia – Zoran Gavrilovski will be deputy for Nikola Stolev in the WFCC online meetings

Russia – Georgy Evseev replaced Andrey Selivanov

3.4. Contacts with inactive delegates and potential new members

The letters I sent to several chess federations and inactive delegates resulted in appointing new delegates of Kazakhstan and Moldova, as well as the deputy delegate of North Macedonia.

The contact with the Croatian Chess Federation brought only one positive effect by now: GM Solver Marko Filipović was supported by CCF to take part in Bratislava ECSC 2023.

Attempts to get in touch with previous delegate from Belarus, or his possible replacement, failed.

The active group of composers from Singapore hasn't accepted initiative to join WFCC, but the communication motivated some proposals by Andrew Buchanan (Annex 1.9.5).

Canadian composers are still not ready to apply for WFCC membership, but they will be represented in the Batumi WCSC.

Many letters were exchanged with Alexey Gasparyan and the officers of Armenian Chess Federation to motivate their presence in WCCC in the neighboring Georgia. In spite of brilliant chess results and tradition, they claimed a lack of funds to support chess composition. Some hopes remained, mostly from the contacts GM Smbat Lputyan.

Delegates from Austria, Brazil and Spain will not be present in Batumi, but they contributed to WCCC with their reports.

3.5. New forces in the WCCI Committee

The members of the WCCI Committee gladly accepted Marco Guida as the spokesman (the post was vacant), and Shankar Ram as the WCCI 2022-24 Director. Both new delegates and new members of the WCCI Committee showed a great enthusiasm. In a hectic daily exchange of emails during four months, they almost finished all the work planned for the next year, and proved the age is not crucial in bringing in a new energy.

3.6. Juniors in the Media team

Two young problemists, Anirudh Daga (born 2008) and Ilija Serafimović (born 2004), have contributed to media promotion. Anirudh created a series called "Learner's Corner", with 11 videos about unorthodox genres. Ilija took the task to coordinate a calendar of chess composing tourneys.

3.7. Updated and extended list of FIDE Album points

The [latest version of the composing title points](#) list has been published and enriched with country names, dates of birth/death, title, year the title was granted and names in native form. The huge effort of migration/integration was done by Bjørn Enemark and checked by Harry Fougiaxis.

3.8. WCCT Archive completed

Thanks to Roland Ott and Julia Vysostka, the WCCT Archive was completed, and final booklets of all 11 WCCTs were posted in PDF on the WFCC [WCCT Section](#).

3.9. Presidium proposed to name Bernd Ellinghoven a Honorary Member. Bernd was a distinguished delegate of Germany for 35 years, with very important roles, such as editing the FIDE Album.

3.10. The Day of Chess Composition

Historical research by Jiří Jelinek, supported by Johan de Boer, brought interesting facts to discuss and consider (Annex 2.10).

4. Cooperation with the FIDE

Several FIDE officers supported new Presidium right from the beginning, starting with the Deputy Chair Dana Reizniece-Ozola. According to her advice, the WFCC Profile was updated in the section of the [FIDE Affiliated organizations](#).

4.1. FIDE financial support

Email contact with FIDE Treasurer Zhu Chen, followed by online meeting with the Executive Director Victor Bologan and the Special Tasks Director Akaki Iashvili, brought some assurance that WFCC should keep receiving the regular budget of 3.000 EUR. This year we couldn't apply for it, having no bank account.

In 2023 the FIDE rewarded three chess composers with the total amount of 7.500 EUR, among 24 deserving chess veterans: [Igor Yarmonov \(Ukraine\)](#), [Yochanan Afek \(Israel\)](#), and [Živko Janevski \(North Macedonia\)](#).

4.2. Promotion on FIDE website

Invitation by the FIDE Press Officer to promote our activities has been intensively used. They gladly published 11 extensive WFCC reports in the first half of 2023. All WFCC members are invited to promote their national competitions and other activities on the FIDE website, with interesting to read materials, obligatory photos of good quality and intriguing diagrams.

4.3. Solving in the context of FIDE events

Thanks to the long lasting efforts of David Gurgendidze and Akaki Iashvili, FIDE gave an official recommendation to all future organizers of the OTB World Youth Championships to include solving competitions during the free day. With rich experience in judging chess and solving competitions, Vice-President Dinu-Ioan Nicula took the task of defining rules (Annex 1.9.12) and logistics. The success of this project may become the most important WFCC step in popularizing chess composition.

Marjan Kovačević

WFCC President

Legal and financial matters

In order to open a new bank account in UAE, a long lasting process started at the beginning of 2023. The first stage was to open the WFCC main office. It asked for approvals from: the office of His Highness the Crown Prince of Fujairah, the UAE Chess Federation, the Ministry of Foreign Affairs, and other relevant authorities. The final approval was obtained from the General Authority of Sports, the highest legislature for sports in the United Arab Emirates.

The WFCC main office will be in the Fujairah Chess and Culture Club. In 2024 the new building of the FCCC will be open, considered to be one of the largest and most attractive chess clubs in the world.

Process of opening the WFCC bank account is currently under procedure. The WFCC bank account is expected to be at the National Bank of Fujairah, with annual support from the Government of Fujairah amounting to 5000 (five thousands) EUR. The annual support for the year 2023 was approved in August 2023.

The ceremony of opening the WFCC main office is planned to be held later this year, on a very high level, and with important guests from the world of chess, to raise the position of WFCC in media and to attract new countries to join WFCC.

Financial support from the Fujairah Government

To improve the unstable financial situation of the WFCC, the Fujairah Government is ready to support the WFCC with yearly income of 5.000 EUR. A larger part of it should be invested in more important projects for the future, where the support from the Fujairah Government would be effective and visible.

The obligations:

- (1) The WFCC would take the obligation of publishing the logo of the FG among the supporters on the WFCC website ;
- (2) The organizers of the FG supported projects would take the obligation to have the logo of FG in the sponsors' part of their banners, booklets or other documents suitable for that.

FIDE ALBUM COMMITTEE WCCC 2023 AGENDA

1. One of the pending topics from the Fujairah meeting had been the suggestion of V. Crişan and N. Shankar Ram to introduce an individual section for help-selfmates (see below). The committee examined it further during the year and also studied the alternative suggestion made by the WCCT committee to introduce instead a section of "light" fairy problems (stalemates, series-play, reflexmates, help-selfmates, all without fairy pieces or conditions).

Eric Huber, the director of the fairy problems section in the current FIDE album cycle (2019-2021), compiled some very useful statistics:

G1 (Problems without fairy CONDITIONS)

Stipulation	W/o fairy elements	With fairy elements	Total	In FA by WCCI	W/o fairy elements in FA by WCCI	With fairy elements in FA by WCCI
Help-self	239	76	315	24	16	8
Series	80	19	99	3	2	1
Reflexmate	5	2	7	1	0	1
Direct	2	117	119	10	0	10
Helpmate	2	105	107	10	0	10
Helpstalemate	69	2	71	7	7	0
Other	5	21	26	5	1	4
Total	402	342	744	60	26	34

G2 (Problems with fairy CONDITIONS)

Stipulation	Total	Percentage	In FA by WCCI	Percentage
Help-self	220	29.22%	38	50.67%
Series	50	6.64%	2	2.67%
Reflexmate	1	0.13%	0	0.00%
Direct	108	14.34%	9	12.00%
Helpmate	310	41.17%	23	30.67%
Helpstalemate	19	2.52%	0	0.00%
Selfmate	34	4.52%	2	2.67%
Other	11	1.46%	1	1.33%
Total	753	100.00%	75	100.00%

In G2 we have more selfmates than in G1, that's why they are counted in a separate line.

In a nutshell, the figures are as follows:

Help-self problems from G1: 315

Help-self problems from G2: 220

Total help-self problems: 535

Rest of G1: 744-315 = 429

Rest of G2: 753-220: 533

The numbers seem pretty convincing. The committee suggests that a new group G3 is established only for help-self problems inside the fairy problems section.

2. Comparison tables between the two albums. Open for discussion.

2019-21

Section	Composers	Submitted	4.5+ points	8+ points	Percentage	WCCI
A	51	1250	1029	233	22.6%	41
B	57	950	797	169	21.2%	65
C	45	849	599	167	27.9%	54
E	98	2380	2054	367	17.9%	97
F	58	994	962	270	28%	65
H	34	375	352	77	21.9%	24

2016-18

Section	Composers	Submitted	4.5+ points	8+ points	Percentage	WCCI
A	69	1446	1236	273	22.1%	55
B	58	1116	969	241	24.9%	58
C	53	914	735	159	21.6%	52
E	92	2544	2228	400	17.9%	142
F	53	1108	1041	215	20.6%	79
H	31	346	313	112	35.8%	30

3. A suggestion for discussion that seems quite useful (after an email received from Kostas Prentos): The spokesman of the committee makes available on the site a PDF file showing the total points of each composition. No individual scores of the judges are shown.

4. Proposal for a section in the Album to be devoted to Mathematical problems, left for discussion in this congress: See below. Please try to make an opinion on it.

5. Planning of the draft list of indexers for the 2019-21 album and of the list of directors and judges for the 2022-24 album.

6. Discussion on a suggestion and a proposal received recently from Igor Yarmonov. The last one is for the WCCI committee of course.

Я ПРЕДЛАГАЮ:

Оставить ограничение посылки 30 композиций в каждом разделе Альбома ФИДЕ касательно личных работ одного автора. Что касается совместных работ, сделать отдельно ограничение на посылку 30 композиций в каждом разделе Альбома ФИДЕ. (Цифры можно изменить после общего обсуждения). С одной стороны, это имеет то основание, что «горе-составители» и плагиаторы обычно составляют в одиночку. С другой стороны, это дает отличный дополнительный стимул для коллективного творчества, что можно только поощрять.

Игорь Ярмонов

I SUGGEST:

Leave the sending limit of 30 compositions in each section of the FIDE Album regarding the personal works of one author. As regards collaborations, make a separate limit on sending 30 compositions in each section of the FIDE Album. (Numbers can be changed after general discussion). On the one hand, this has the basis that "unfortunate compilers" and plagiarists usually compose alone. On the other hand, it provides an excellent additional incentive for collective creativity, which can only be encouraged.

PROPOSAL

I have one more little suggestion. Hold a separate World Championship among collective tasks (etudes). For example, each duo sends 4-5 joint published compositions (in each section). Separately, it can be done for trios and quartets, when the problem has 3 authors (4 authors), etc.

Proposal to set up an errata page for FIDE Albums on the WFCC website
Proposed by: N. Shankar Ram (India)

As most are aware, the published Albums contain a small percentage of mistakes like:

1. Cooks and Duals
2. Complete Anticipations
3. No Solutions
4. Illegal Positions (non-Fairies)
5. Mistakes and omissions in the:
 1. Author names
 2. Source and date
 3. Diagram
 4. Stipulation
 5. Twins
 6. Solutions

A few of these are captured in a page at the end of some of the Albums. But most are discovered later. Currently, sources which have this information for some of the problems are Vaclav Kotesovec's website (<http://www.kotesovec.cz/>) and Christian Poisson's Echecs database.

This proposal suggests setting up a page, called "Errata", on the WFCC website, under the FIDE Albums section, to permanently show this information. To start with, all known cases can be put on it, after being cleared by the Album committee. Later, a form which allows anybody to post further cases can be set up. These can be added after verification.

Such pages exist for many currently published books on the publisher's websites. A good example, which can be used as a basis is: <https://www.oreilly.com/catalog/errata.csp?isbn=0636920030775>
The site superproblem.ru also has such a form for some of its awards.

All this is not to nitpick the hard work put in by the Album team, starting from the directors, judges, indexers and the publisher. The Albums are an official record of our accomplishments. We owe it to future generations to make them more accurate and error free.

N.Shankar Ram
11-Aug-2023

Andrey Frolkin: Missing sections in FIDE Album

All types of compositions (except “joke problems” which have no “formalized” solution) should be provided with an opportunity to be represented in the FIDE Album.

Last year, Eduard Eilazyan asked me to participate in writing an article (which was published in *Problemas*) in support of the “rights” of chess mathematical problems. Some 40 years ago they were part of the section “Retros and Mathematical Problems”; then they were dismissed from the Album without any explanation or announcement. Now there is no Album section to which Eduard can send his mathematical compositions. He sent them to the retro section and was told they did not belong there. He sent them to the fairies section – and again they were dismissed.

Back in 2009, Kostas Prentos and I published a long article in *Phénix* on “synthetic” problems. In these problems, at least two chess composition genres (sections) are combined, e.g. helpmates and proof games. One such problem was a PG with a helpmate in 1.5 moves in the diagram position. The helpmate solution consisted of Valladao moves: e.p. capture, castling and promotion. In the solution to the PG part of the problem, Valladao task was also presented. Such a problem has no chance in the h# section of course – it is too simple as a helpmate. Nor does it have a chance to make it to the FIDE Album as a proof game – because 2 Vallodaos have already been achieved in a PG. But as a synthetic problem, I believe it was “very special” and could have deserved a place in the Album. But there is no section for “Synthetic Problems.”

Ideally, at least one extra Album section should be introduced for compositions of these types. It could be entitled “Other Compositions.” Certainly, two sections would be better: “Mathematical Chess Problems” and “Other Compositions.”

Proposal for WCCT score calculation change

(based on proposals from Marko Klasinc and David Hodge, to be discussed at the Committee meeting first)

Current system has an obvious drawback. When one judge is typically more harsh than the other judges, problems from their country benefit slightly. If a judge is typically more generous than other judges, problems from their country are harmed slightly.

1. The change only concerns the final marks for the problems of judging countries in the corresponding sections.
2. For next stage of calculation only the problems from non-judging countries that have not received zero marks are taken into account.
3. The score for specific problem for the specific judging country is calculated in the following way:
 - a. If the mark is not the lowest, the score is 0.
 - b. If the mark is the single lowest, the country receives the score of 1.
 - c. If two countries have given the lowest mark, the score is 0,5 for each of them.
 - d. If three countries have given the lowest mark, the score is 0,33333 for each of them.
 - e. If four countries have given the lowest mark, the score is 0,25 for each of them.
 - f. If all countries have given the same mark, the score is 0,2 for each of them.
4. The percentage of lowest marks is calculated by dividing the sum of all scores calculated in p.3 for given country by the number of problems considered (the result is further designated as B (“below”)).
5. The percentage of highest marks is calculated in the same way (the result is further designated as A (“Above”)).
6. For the problems of judging countries let us designate the lowest mark as L, sum of two “middle” marks as M and the highest mark as H.
7. The two following methods of further calculations were proposed.

- a. $R = \text{abs}(B - A)$. If $B > A$, the final mark is $R * L + (1,5 - 0,5 * R) * M$. If $B < A$, the final mark is $R * H + (1,5 - 0,5 * R) * M$.
 - b. The final mark is $B * L + A * H + (1,5 - 0,5 * A - 0,5 * B) * M$.
8. The mark calculated according to p.7 is rounded off to one digit after decimal point.

WCCT Committee Spokesman Georgy Evseev.

Suggested changes for WFCC Codex

Andrew Buchanan

7-Aug-2023

(responses received from Michel Caillaud, Werner Keym, Thomas Brand, Thierry Le Gleuher & Thomas Volet. Andrey Frolkin informed.)

I really like the WFCC Codex. It comes from a good place and was well-crafted with an admirable lightness of touch. In particular, it takes us towards a solid retro foundation, which will benefit newcomers together with retro, fairy & engine specialists. However the art is to do this while protecting the interests of prior problemists.

I would like to humbly suggest a few changes for future consideration. Please consider each separately. If there is any doubt, please don't hesitate to contact me - I am very happy to discuss. Marjan has my Whatsapp number.

Originally, the list of points also included a number of retro issues. However we retro folks have decided that we want to discuss these offline, and instead plan to present them to the Codex Committee in 2024.

#	Location	Summary	Stakeholders
1	Footnote 12	Link Codex to latest version of Laws	Codex Committee
2	Footnote 13	Delete as unnecessary	Codex Committee
3	Article 23 & Footnote 29	Discuss joint authorship & rework Codex	Codex Committee
4	New	Discuss how to manage consistency of occasionally changing rules & conventions	Codex Committee
5	ADMIN	Please properly communicate any conclusions	Marjan, Codex Committee

SIMPLE CHANGES

(1) Footnote 12: link Codex to latest version of Laws

"1 Jan 2018 -> 1 Jan 2023"

REASON: Just to stay current. It can become harder to source older versions of FIDE Laws. No significant changes since the last version.

(2) Footnote 13: delete as unnecessary

Delete Footnote 13 which says:

"In this context, the terms orthodox, heterodox, fairy and exo are used."

REASON: The purpose & meaning of these words are lost. Alternative: define heterodox & exo, if these are genuinely important: no-one I know can tell me.

BROADER TOPICS FOR DISCUSSION

(7) Article 23 & Footnote 29: discuss joint authorship & rework Codex

Rework Article 23 (& Footnote 29) as a whole.

REASON: (a) What does "loss of priority date" imply if the author must still be cited as author if someone corrects the problem? It seems meaningless.

(b) Footnote 29 ignores the common situation where the original author(s) is/are deceased.

(c) "AB version CD" & "EF correction GH" are:

- clumsy,
- not scaleable ("AB version CD version EF"),
- not supported by any of the major databases,
- not encouraged by FIDE Album submission policy,
- may not sufficiently reflect the contribution of the corrector/versioner,

- few serious authors use this category.

Only minor changes should fall into this category. Corrections in particular can change the value of an old composition from nearly zero to something substantial.

Because this option is undesirable, there is a hole in the spectrum of attribution.

(d) "CD after EF" is better but:

- still clumsy,

- easy to lose the "after" part of the specification,

- may not sufficiently reflect the contribution of the original author.

(e) In practice for tasks & records in the retro space, authors do share author rights equally with prior authors ("CD, EF & GH"), even if they are deceased. It is a mark of respect and promotes a sense of continuity across time with previous generations of authors. It should be listed as a possible outcome where the original author is deceased.

(8) Discuss how to manage consistency of occasionally changing rules & conventions

REASON: Here is an issue, with my suggested solution.

"The Piran codex is still interesting for the problem chess community since it might be possible that a problem is sound with respect to the Piran codex, but not with respect to the Rotterdam/Portoroz codex, or vice versa."

How to allow the slow evolution of rules & conventions, so we are not stuck in an eternal vagueness? I propose a simple timeline, divided up into periods. During each period the rules & conventions are constant, terminated by some (always relatively minor) set of changes. Almost all problems will have the same interpretation throughout time, but there are some, particularly retro, which will vary.

A problem if sound in any period cannot later be regarded as unsound or be forced to become fairy.

The composer is under no obligation to change the stipulation! If a problem does not follow the most up-to-date set of rules & conventions, I term it "Golden Age". For example, dummy pawn is not really fairy: it's much more special than that. In 1862 it was legal. But it's not legal now, so such problems are Golden Age. **This is not part of the stipulation:** it is a database tag, with a parameter, e.g. Golden Age(Dummy Pawn) or Golden Age(Codex 2015 DP), to indicate the specific point.

There is no shame to Golden Age. James Malcom & I have created many retrospectively. Another situation is where a rule was vague but gradually standardization appears. The nature of e.p. for draw by repetition is one such. I made a PG many years ago which is now on the wrong side of history, and I am totally ok that it is Golden Age. There's another AP problem I made with Ronald Turnbull: really it doesn't work, as we now understand AP more precisely: Golden Age is a happy home. And these castling-resets 50Ms are really trying to be Golden Age.

But the big win is that the latest rules & conventions don't have to support every old idea that was ever conceived. While engines exist for conventional play, problem solving & proof games, there is virtually nothing for retro problems. Retractor 2.0 by Ted Hwa, although it is non-trivial, is still in its infancy, and there is absolutely nothing to help with castling/e.p./50M/3Rep. A first step is to make the conventions clear. I have many more ideas, but they are for later.

ADMIN

(5) Please

- Ensure that all agreed changes to the Codex form part of the minutes of the Congress
- Ensure that new Codex is updated to WFCC site promptly.
- Change the folder name for new Codex, currently "<https://www.wfcc.ch/1999-2012/codex/>" since the date has misled people.
- Ensure that the Handbook always includes the latest version of the Codex (current 2021 edition does not even have the 2015 version of the Codex).

Thanks for all your work!
Andrew Buchanan

Youth Chess Composing Challenge new section – Synthetics

To encourage young solvers become composers, one intermediate step would be to provide them the challenge of re-creating the initial position of a chess composition based on its full solution. This type of reconstruction exercise is known as “Synthetic” and has been popularized by reputed chess composition magazines such as The Problemist, Probleemblad and Problemas.

This proposal suggests the creation of a new challenge within the YCCC, called Synthetics.

The rules of the Synthetics Challenge are the following:

1. The main organizer of the challenge will select the synthetics to be solved.
2. The list of synthetics to be solved will be announced at the same time with the other YCCC sections.
3. A synthetic means a given stipulation and the full solution of a chess composition.
4. The solvers are asked to identify the initial positions of the synthetics.
5. The solvers may submit only one solution for each synthetic.
6. The solvers will be asked to submit their solutions for synthetics in electronic form. It is advised to use a standard submission form (e.g. Mat Plus Forum).
7. The solvers will receive 1 point for retrieving the exact initial position of the piece.
8. The solvers will receive 10 bonus points for providing an initial setting whose solution respects entirely the synthetic requirements.
9. The solvers will get 3 penalty points for each flaw in their reconstruction. Only flaws not present in the original diagram will be penalized.
10. The main organizer may communicate the solvers the discovered flaws, but not the number of awarded points. This communication rule is applicable only for early submissions.
11. The main organizer will provide the classification of solvers, by summing the number of points (including bonuses and penalties).
12. The first three solvers will receive medals and diplomas during the WCCC.

The responsible for running the event for the next 5 years is Vlaicu Crisan.

The success of this competition relies on the submission of good examples, either published or original, by other composers. Ideally the synthetics should not be too long – 2 moves are enough and should not allow alternate placements of many pieces.

For the first edition, the main organizer will select 3 compositions. The number of compositions may be gradually increased to 4-6 based on the feedback of the participants.

Presidium: Youth project 2024/25

While young solvers and adult composers have many more chances and stimuluses to compete, young composers have only symbolic motivation in the context of Youth Chess Composing Challenge.

The quantity and quality of YCCC keeps rising, but more than a half of participants (from around 20 countries) have never appeared in the WFCC live events. This proposal aims to attract them to join our society and prove their skills publically.

At the same time, young solvers would benefit too. The WCSC would get juniors for more countries and the needed quota to be counted as an official competition for juniors.

Proposal

In the budget for 2024/25, a half of the yearly financial support from the Fujairah Government (2.500 EUR) would be allocated for supporting young chess composers, in the following way:

(1) **Five most successful participants** of the Youth Chess Composing Challenge 2024 (among those born 2002 and younger), **from five different countries**, would earn rights on **vouchers of 500 EUR each, for the WCCC 2025**.

(2) Rewarded juniors would be **obliged to take part in the WCSC** (on a supplementary place, if necessary) **and other WCCC solving and composing events**. Those who couldn't use their rewards would be substituted by the next best composer from their country. If there are no more participants from their country, the voucher would be given to the next best participant, etc.

Side effects and logistic

(1) The Youth project would assure **WCSC to have juniors from at least five different countries**, as one of the necessary conditions for junior competition to be official. Since 2018, only Fujairah WCSC had an official World championship for juniors

(2) The allocated **money would be transferred directly to the WCCC organizers**, who would also benefit from that.

(3) The expenses would become active **in the 2nd part of 2025**. This would give us time to stabilize the financial situation and try to develop this as a regular yearly project.

DRAFT PROPOSAL**For****1st Youth Chess Solving Challenge (YCSC) 2024**

At the 64th WCCC in Fujairah, the Youth Committee established a Youth Solving Team, tasking them with the preparation of a proposal for a 1st YCSC using the online solving platform used for the BOOM series of tournaments. The primary objectives of the YCSC are:

1. to provide a fun opportunity for young chess players of all nations to engage with solving
2. at all ages from 6 to 23 years old
3. at all levels from novice to elite solver
4. over a comprehensive range of genres and formats
5. while providing them with sufficient guidance to develop a life-long interest.

The team and contributors to the project since Fujairah are Marjan Kovacevic (SRB), Paz Einat (ISR), Vlaicu Crisan (ROU) and Ian Watson/Brian Cook (GBR).

Documents that you are requested to consider in arriving at your judgement of the proposal are:

- Draft Announcement (see Annex below)
- Demonstrator at web-page <http://www.ihandicap.mobi/ycsc/yc230505.htm>

where you can sample both the classical and blitz formats that we believe will be most attractive for the adventurous young spirits that we need to induct into the problemist fold.

With your support, we will then endeavour to deliver the perfect complement to YCCC edition 8.

DRAFT Announcement

1st Youth Chess Solving Challenge 2024

The Youth Chess Solving Challenge (YCSC) is an individual competition open to young solvers of all countries who were born in the year 2001 or later.

The following programme of events (online @Home) will be organized by WFCC:

Date (Sunday)	Event	Format	Timing (Local)	Director	Assisted by
14/01/2024	Classical Blitz	#2 #4 H#2 #3 += S#n 20 x #2	12:30-13:30 13:40-14:00	Brian Cook	Vlaicu Crisan Ian Watson
04/02/2024	Classical Blitz	#2 += S#2 #3 #n H#n 20 x #2	12:30-13:30 13:40-14:00	Brian Cook	Vlaicu Crisan Ian Watson
10/03/2024	Classical Blitz	#2 #4 H#2 #3 += S#n 20 x #2	12:30-13:30 13:40-14:00	Brian Cook	Vlaicu Crisan Ian Watson
19/05/2024	Classical Blitz	#2 += S#2 #3 #n H#n 20 x #2	12:30-13:30 13:40-14:00	Brian Cook	Vlaicu Crisan Ian Watson
14/07/2024	Classical Blitz	#2 #4 H#2 #3 += S#n 20 x #2	12:30-13:30 13:40-14:00	Brian Cook	Vlaicu Crisan Ian Watson
15/09/2024	Classical Blitz	#2 += S#2 #3 #n H#n 20 x #2	12:30-13:30 13:40-14:00	Brian Cook	Vlaicu Crisan Ian Watson

For the Classical rounds, the first 3 problems will be at Category 2 level with the remaining 3 at Category 1 level. Points for the Classical rounds are awarded according to WCSC guidelines.

Problems for the Blitz rounds are ordered alternately (easy & hard). For the Blitz rounds, 5 points are awarded for a correct answer, 2 points for a move by the correct piece, 1 point for trying and 0 points otherwise.

For each of the 12 events, points will be awarded to the top 10 solvers in each age group as follows:

1 st	2 nd	3 rd	4 th	5 th	6 th	7 th	8 th	9 th	10 th
24	18	15	12	10	8	6	4	2	1

with overall scores updated over the year to decide the Classical and Blitz winners.

The Tournament Director(s) is Brian Cook, assisted by Vlaicu Crisan and Ian Watson. For each round, a webpage will be provided in advance for solvers, providing the appropriate schedule, supporting announcements and the choice of Notation (ie. GER = KDTLSB, etc). www.ihandicap.mobi/ycsc/ is the tournament website and the eMail address is netchex@btinternet.com (for appeals, enquiries, etc). Registration is required (by eMail to netchex@btinternet.com giving name, year of birth and nationality [or FIDE]). Results and Final Reports will be published as quickly as possible via WFCCs Solving Tournament Manager (STM), the tournament website and also by eMail to all participants.

NOTES:

1. Practice pages are provided at <http://www.ihandicap.mobi/ycsc/yc230505.htm> You are asked to submit your practice results to tourney control when prompted – so that we can check that connections are working, resolve any other issues that may arise and answer any questions that you may have.
2. You should be able to participate on any PC, laptop, tablet or smart-phone with internet connection.
3. You are trusted absolutely to observe established tournament conditions and to participate in a spirit of friendly rivalry. There are no grading or norm allocations.
4. For promotional purposes, national members are welcome to use the results tables to make national awards to talented young solvers in accordance with their Youth policies.
5. The 1st YCSC 2024 is open to the U23 generation (born 2001 or later), matching the age limit for juniors in the YCCC and WFCC solving competitions (WCSC, ECSC, ISC). Age groups are determined according to year-of-birth, as follows:

Y-O-B Range	>2015	2014/5	2012/3	2010/11	2008/9	2006/7	2004/5	<2004
Approx Age	<8	9-10	11-12	13-14	15-16	17-18	19-20	21-23

6. A Tournament Booklet will be produced as soon as possible after the final round and updated after the presentation (in WORD format in English; for easy translation using 'Google translate' into most languages).
7. Free guidance on solving chess problems and studies will be provided on Registration.

Brian Cook

18 August 2023

To WFCC and Solving Committee

Proposal for establishing the World Championship for Solving Fairy Chess Problems (WCSF)

As it was agreed in the last Congress in Fujairah, I collected ideas and prepared proposal for the rules and procedures for the Fairy Chess Solving World Championship (the Rules and initial Themes are attached).

A short review:

- the WCSF would be of 2 rounds with 8 problems in each;
- the WCSF would be organised by a country which is a member of the FIDE and has been appointed by the WFCC (typically during the Congress on Sunday (first round) and on Sunday or Monday (second round));
- hope to have each year championship, with the possibility to have support from WFCC or the participants (to cover the costs of the director, cups and medals, etc.);
- the WCSF is an official team World championship if teams of at least 7 countries participate; and it is an official individual World championship if at least 30 solvers from at least 10 countries participate;
- the organising country nominates the Director of the WCSF; and the Director is responsible for publication of all fairy pieces and fairy conditions, which can be used during the competition, with examples, at least 6 month before the competition on WFCC website;
- the WCSF rules have some similarity to WCSC rules;
- the project of such competition will be held in the Congress in Batumi.

2nd Vice-President,
Vidmantas Satkus

WORLD CHAMPIONSHIP FOR SOLVING FAIRY CHESS PROBLEMS (WCSF)

1. The WCSF is a competition for national teams and individual solvers.
2. It consists of 2 rounds over 1 or 2 day(s). Each round lasts for 2 hours.
3. 8 problems are per round. For each round (for each mentioned stipulation ending in mate, the corresponding stipulations ending in stalemate is also acceptable):
 - #n (with: fairy piece(s) and/or fairy condition(s));
 - h#n (with: fairy piece(s) and/or fairy condition(s));
 - hs#n (with or without: fairy piece(s) and/or fairy condition(s));
 - s#n (with: fairy piece(s) and/or fairy condition(s));
 - ser. {any}#n (with or without: fairy piece(s) and/or fairy condition(s));
 - retro or proof game (with or without: fairy piece(s) and/or fairy condition(s)); and
 - 2 fairy problems with other stipulation (can be from the mentioned above).
4. There is no requirement on the legality of the problems' positions (unless it is said). And problems to be solved should fulfill these requirements:
 - should be presented on printed diagrams;
 - should be on rectangular chess board with side lengths no larger than 8 squares; vertical/horizontal cylinder chess boards and grid chess boards are allowed; and
 - should be originals or, alternatively, little known problems; problems that are not originals should have been published more than 5 calendar years before the competition.
5. Additional recommendations for the problems to be solved:
 - the problems should show a clear theme and a good level of quality and difficulty;
 - in each round, the problems should represent different styles;
 - problems that have been reprinted in FIDE albums should be avoided;
 - not more than one fairy condition per problem and not more than one family of fairy pieces per problem; and
 - the problems should be computer tested as far as possible.
6. The WCSF is organised by a country which is a member of the FIDE and has been appointed by the WFCC (typically during WFCC Congress on Sunday (first round) and on Sunday or Monday (second round)).
7. WCSF is open to all members of the FIDE.
8. WCSF is an official team World championship if teams of at least 7 countries participate. It is an official individual World championship if at least 30 solvers from at least 10 countries participate.
9. The organising country nominates the Director of the WCSF, if possible, before the announcement of the competition. It is recommended that the Director should have a title FIDE Solving Judge or should have experience as a director / judge of at least three solving tournaments.
10. The Director is responsible for:
 - selection of problems to be solved;
 - diagram copies for the competition;
 - keeping the set of selected problems confidential;
 - publication of all fairy pieces and fairy conditions, which can be used during the competition, with examples, at least 6 month before the competition on WFCC website;
 - take care, that these rules should be followed, and
 - if something is not written in these rules the Director should use common sense.

11. Each team consists of 2 or 3 solvers. Each team member simultaneously competes in the individual championship.
12. All countries are entitled to enter one team, the organising country 2 teams. All countries may send one further solver for the individual championship as well. A country may nominate one more solver from extra categories (juniors, women, seniors) out of this quota.
13. A country and individuals mentioned above must notify the organiser of their intention to participate not later than 3 months before the competition; unless in the organiser's announcement a later date is given.
14. The rules for the eligibility of participating solvers (whether team members or individual nominees) shall be the same as for FIDE over-the-board events.
15. Each country must notify the names of all solvers participating on its behalf in writing to the Director or the person nominated for this purpose by the Director or WFCC not less than 12 hours before the competition starts. If required, the notification must include all documents according to the FIDE rules for establishing the eligibility of the participants. The WFCC or the person so nominated is responsible for determining the eligibility of participants. Teams and/or solvers may be admitted at a later time at the discretion of the Director.
16. A solver may use the chess board(s) by the organiser, or his/her own. The use of all electronic or technological aids which can help in solving is forbidden as well as any other kind of unfair behaviour. The Director's rights and duties are to prevent any irregularities and to penalize them if necessary.
17. A solver must write the solutions only on the sheet provided by the Director. Solvers are allowed to write their solutions on the backside of the solving sheets as well.
18. The solutions are to be written in algebraic notation in the following way:
 - in direct mate problems: all moves in all variations of full length which defend against the threat, including the threat if it is of full length, except the last move of black and the mating move (if there is no threat at all or an existing threat of full length is not written, all variations of full length are to be given);
 - in selfmate and helpselfmate problems: all moves except the mating move in all variations of full length which defend against the threat, including the threat if it is of full length (if there is no threat at all or an existing threat of full length is not written, all variations of full length are to be given);
 - in helpmate and other type of problems: all moves; and
 - in all fairy chess problem, including retro problems, it is enough for solver to write the moves without any explanations.
19. In problem(s) for which more than one single solution is indicated the solver has to give all requested single solutions for a complete solution.
20. If a problem turns out to have 1 or more unintended solution(s), these are equally valid as the intended solutions. The correct and complete solution or cook of a problem scores 5 points.
21. An incomplete solution scores fewer points. Incorrect or incomplete variations or single solutions score 0 points. If more than the required number of solutions for a particular problem is written, it is enough that one of the solutions is incorrect for the solver to score 0 points for this problem. If more than one continuation following a defence (or more than one threat) is written, it is enough that one of them is incorrect for the solver to score 0 points for this variation (threat).
22. The Director must determine the distribution of points for a solution (i.e. for different variations, moves or single solutions) before the competition starts. For a problem(s) with more than one solution the distribution of points should be indicated on the solving sheet.
23. If a problem has no solution, 0 points are awarded for this problem and all solvers get the full time score in this round.

24. If a move is written incorrectly or ambiguously, no points are given for the respective variation or solution. If, however, the Director is sure that the correct move was intended, the same number of points are given for variation or solution as if the move had been written correctly.
25. During the solving a solver may leave the solving room only with a permission of the Director and accompanied by Director's assistant.
26. When a solver hands over the solving sheet Director's assistant immediately writes the elapsed time on the solver's solving sheet. The solving time is rounded up to the next minute (i.e. when the last minute starts solvers get full time). After handing the solving sheet, the solver has no right to make any change to the solutions. The solver should leave the room and may not return until the round is ended.
27. The Director announces "half time", "10 minutes left", "last minute" and "full time - stop writing" in each round. After the announcement of the last minute, all remaining solvers remain seated until their solving sheet has been picked up by a Director's assistant. After full time has been announced, no changes to the solving sheets are allowed.
28. For the team result in each round, the scores of the 2 best solvers of a team for this round are taken in consideration. The points of all rounds will be totalled, as well as the respective solving time (in minutes).
29. For the individual score, the points a solver achieves in the different rounds will be totalled, as well as the solving time. A solver with 0 points in a round scores the full time for this round.
30. The number of points determines the ranking. In the event of a tie on points, the solver or team with the shorter total solving time will be ranked higher.
31. Participants must be informed of the official solutions with a distribution of points of a round immediately after the end of that round. The results of the rounds must be announced in written form as soon as possible.
32. If a problem has proved to be incorrect (cooks, duals, no solution) this must be announced as soon as possible including the respective distribution of points.
33. The Director has to publish preliminary results as soon as possible. Any protests must reach the Director in written form not later than 12 hours after preliminary results are published. The Director is allowed to accept protests out of time. If the Director cannot be found, a protest should be handed to any of Director's assistants or a protest remark is to be made on the announcement board (or by given email address). Protests have to be given by the individual solver.
34. The Director's task is to deal with any protests and to settle disputes. The Director decision, along with argument, is to be given in written form.
35. Objections to any decision by the Director must be made in writing and must reach the Director within one hour of the announcement of the decision. Such objections shall be dealt with by a jury consisting of three neutral persons nominated by the WFCC. The majority decision of the jury (in written form with the argument) is final.
36. These rules are published on WFCC website. All the other information related to the competition should be published on the official organiser's website at least 24 hours before the start of the first round (registration, start of the rounds, preliminary results, timetable for protests, final results, prize giving, etc.).

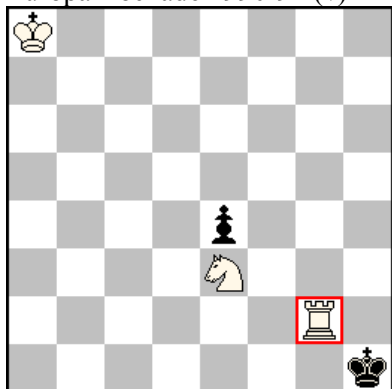
Fairy pieces and conditions for WCSF

Fairy pieces:

Chameleon - A piece that changes its mode of movement after every move in the order: Q→S→B→R→Q.

e.g. Petko A. Petkov

Europa Rochade 1990-91 (v)



#5 (3+2)

□ = Chameleon (CA)

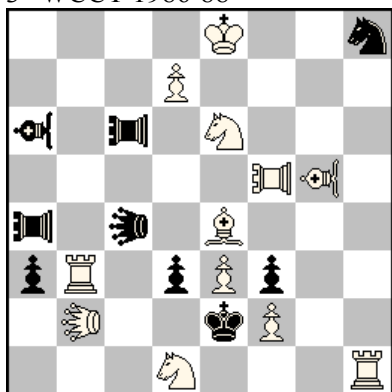
1.CAe2(♔) ♔g1 2.CAg4(♘) ♔h1 3.CAe5(♙) ♔g1 4.CAb2(♖) ♔h1 5.CAg2(♔)#

Chinese pieces:

- **Pao** moves like Rook, but captures by hopping along the Rook-lines over another piece of either colour (check is given over another piece);
- **Vao** moves like Bishop, but captures by hopping along the Bishop-lines over another piece of either colour (check is given over another piece);
- **Leo** combines the power of Pao and Vao.

e.g. Narayan Shankar Ram

3° WCCT 1986-88



#2 (12+9)

♖♗ = Leo (LE)

♖♗ = Pao (PA)

♗♗ = Vao (VA)

1.LEf6! (2.♙f3#)

1... PAf6 2.♘c3#

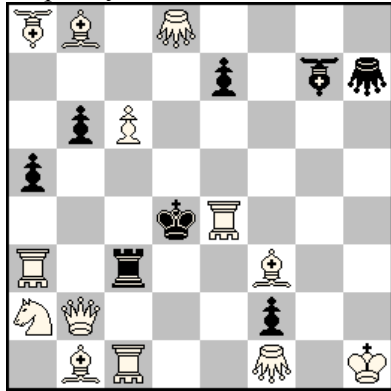
1... VAb7 2.♙d3#

1... PAe4 2.♘d4#

Hoppers:

- **Grasshopper** moves along Queen-lines, but must hop over another piece of either colour and land on the next square beyond (a capture may be made on arrival);
- **Rook-hopper** moves along Rook-lines, but must hop over another piece of either colour and land on the next square beyond (a capture may be made on arrival);
- **Bishop-hopper** moves along Bishop-lines, but must hop over another piece of either colour and land on the next square beyond (a capture may be made on arrival).

e.g. Michel Caillaud
2 Spisski Borovicka, Benidorm 1990



#2 (13+8)

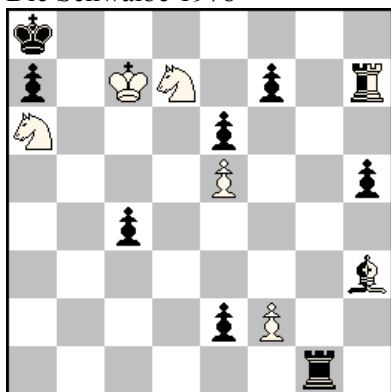
- ♗♘ = Bishop-hopper (BH)
- ♖♗ = Rook-hopper (RH)
- ♙♚ = Grasshopper (GH)

1. GHf6 (2. ♔c3#)
- 1... ♔e3 2. ♔f2#
- 1... ♔c5 2. ♔b6#
- 1... GHd3 2. ♔f2#

Kamikaze - A piece disappears when making a capture, along with its captive.
e.g. at Kamikaze chess

Neutral piece - A fairy piece that can be moved or captured by either side. Both sides are allowed to move any neutral piece. A neutral piece may capture enemy piece or another neutral piece. Neither side is allowed to leave the King in check by a neutral piece. White moves neutral Pawns towards the 8th rank, black moves towards the 1st.

e.g. Hans Peter Rehm
Die Schwalbe 1978

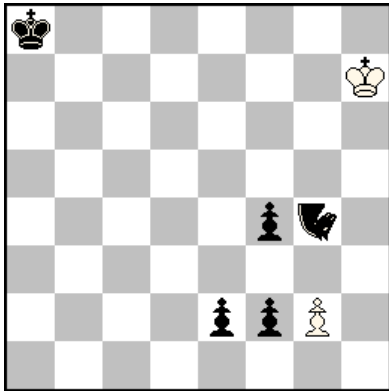


#6 (5+8+2)

1. ♔c6 (2. ♘c7#) n♙g2+ 2. f3 n♙f3+ 3. ♔c7+ n♙g4 4. ♔c8 n♙h8+ 5. ♘f8 n♙f8+ 6. ♔c7#

Nightrider - A fairy piece that moves like a Knight along a path until the end of its line. It can leap over other pieces like Knight, but not over pieces that are on its line, i.e. it may capture the enemy obstructing piece, or stop on the previous squares on its path.

e.g. Alphonse Gruenwald
Feenschach 1952



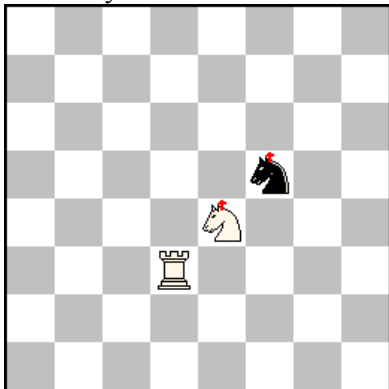
h#6 (2+5)

♞ = Nightrider (N)

1.Na7 g4 2.e1N+ g5 3.Nb7 g6 4.f1N g7 5.Nh5 g8N 6.Nb8 Nd2#

Royal piece - A fairy piece is considered as a King for checks, mates and stalemates, but moves with its own powers. Any piece may be Royal.

e.g. Thomas R. Dawson
The Fairy Chess Review 1949



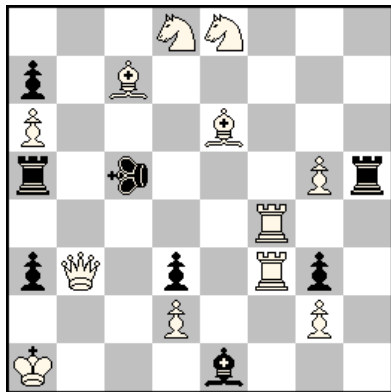
h#2 (2+1)

♞ = Royal piece

1.r♞g7 ♖d7+ 2.r♞e8 ♖e7#

Transmuting Kings - When a King is in check, he moves only like the checking piece. A King that receives a Pawn check on its own back rank cannot move.

e.g. Manfred Rittirsch
 idee & form 2000-01



#2 (12+8)

♠ = Transmuting King

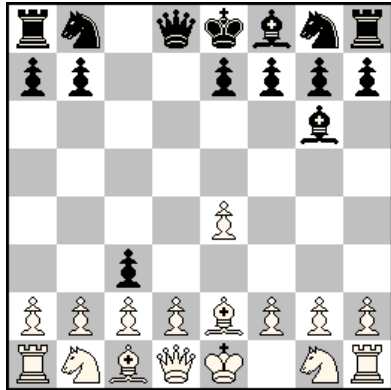
- 1. ♔b1 (2. ♖f5#)
- 1... ♗d2 2. ♗d6#
- 1... ♜g5 2. ♜c4#

Fairy conditions:

Andernach chess - On making a capture a piece (except a King) change colour. A "new" white Rook appearing on a1 or h1, or a black Rook on a8 or h8, can castle.

e.g. Marco Bonavoglia

T.T. Andernach 1993



PG 6,5 (16+15)

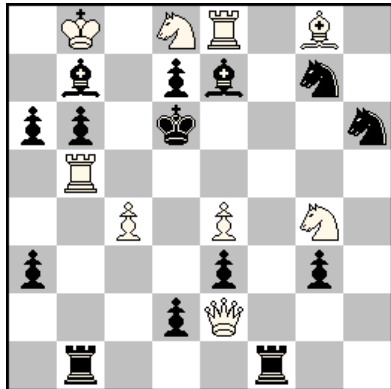
Andernach

1.e4 c5 2. ♖b5 c4 3. ♙c6 dc(white) 4.c7 ♜f5 5.c8♙ ♜g6 6. ♙g4 c3 7. ♙e2

Anti-Andernach chess - On making a move a piece (except a King) change colour, but on capturing it keeps its colour. A "new" white Rook appearing on a1 or h1, or a black Rook on a8 or h8, can castle.

e.g. Hemmo Axt

T.T. Andernach 1996



#3 (9+14)

Anti-Andernach

1. ♙e3 (2. ♘b7+)

1... ♞g8 2. ♙d2+

1... ♜d8 2. ♙h6+

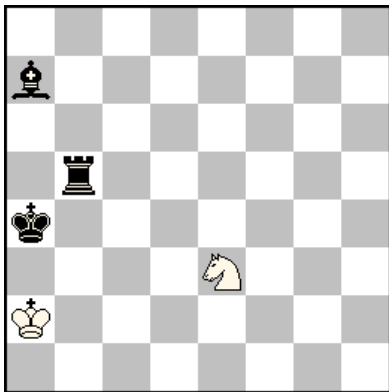
1... ♜b5 2. ♙a3+

1... ♜e4 2. ♙g3+

1... ab 2. ♙b6+

Annan chess - Pieces move normally except when standing in front of another friendly piece, when they move only as that piece. The phrase "in front of" means immediately above for white and immediately below for black.

e.g. Kohey Yamada
Eretria 2005



h#2 (2+3)

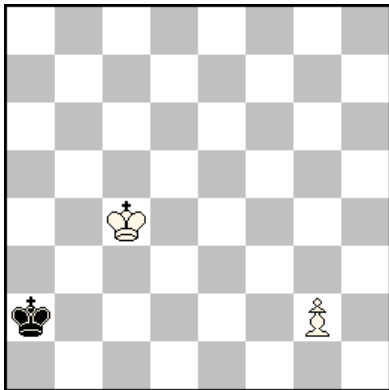
2.1.1.1

Annan

1. ♖d4 ♘c2 2. ♜a5+ ♔b3#
1. ♙b6 ♚b2 2. ♙a5+ ♚a3#

Chameleon chess - Officers change after their move, they become another officer, according to the cycle: Q→S→B→R→Q.

e.g. Erich Bartel
Problemkiste 2006



sd=8 (2+1)

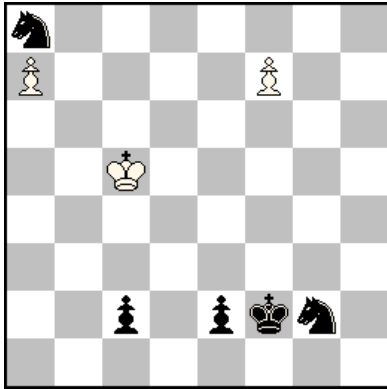
Chameleon

5.g8 ♘ 6. ♘f6(♙) 7. ♙c3(♖) 8. ♖c1(♚)=

Circe - When a capture is made, the captured piece (except a King) is replaced on its rebirth square (Rook, Bishop and Knight are reborn on the square that is the same colour as the square of the capture, Pawns on the file of the capture) if it is empty; otherwise, the captured piece disappears. Castling is permitted with a reborn Rook. Fairy pieces are regarded as being the result of promotion and so are reborn on the promotion-square on the file of the capture.

Fairy condition "Circe" will be used without other fairy conditions or fairy pieces!

e.g. Helmut Zajic
The Problemist 2005



hs#5 (3+5)
Circe

1. ♔d4 ♞b6 2. a8 ♙ e1 ♚ 3. ♙g2(♞g8) ♚e8 4. fe ♚(♞a8) c1 ♚ 5. ♚e3+ ♚e3(♚d1)#

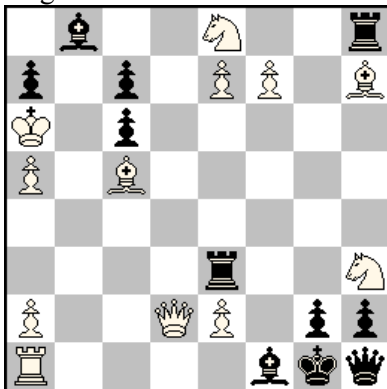
Anti-Circe - On making a capture, a piece (including a King) must come back to its rebirth square; if this square is occupied, the capture is forbidden. The captured piece disappears, as in normal chess. A Pawn capturing on its promotion rank promotes before it is reborn. A capturing King / Rook is allowed to castle.

Calvet type - captures on the rebirth square are allowed.

Cheylian type - captures on the rebirth square are forbidden.

Fairy condition "Anti-Circe" will be used without other fairy conditions or fairy pieces!

e.g. Yves Cheylan
diagrammes 1991



s#2 (12+11)
Anti-Circe Cheylan

1. ♚e1 zug.

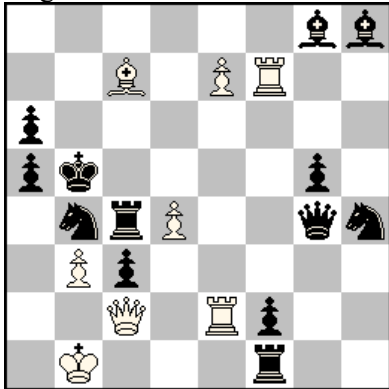
1... ♞f8 2. ef ♚(♚d1) ♙e2(♙c8)#

1... ♞g8 2. fg ♚(♚d1) ♙e2(♙c8)#

1... ♞e8(♞a8) / ♞h7(♞a8) 2. ♚d1 ♙e2(♙c8)#

Functionary chess - A piece may move or capture only if it is observed by an enemy piece. Castling is possible only if the King is observed (not a check) by an enemy unit.

e.g. Hubert Gockel
diagrammes 2004

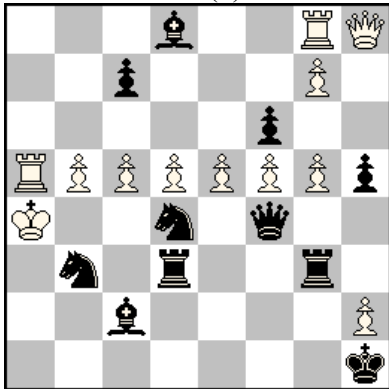


#2 (8+13)
Functionary

- 1. ♖e6 (2. ♖b6#)
- 1... ♜c6 2. ♖e5#
- 1... ♜c7, ♜d4 2. ♖f5#
- 1... a4 2. ba#

Kamikaze chess - All pieces (except Kings) disappears when making a capture, along with its captive.

e.g. David Wertheim, Zvi Roth, Shlomo Seider
feenschach 1977 (v)

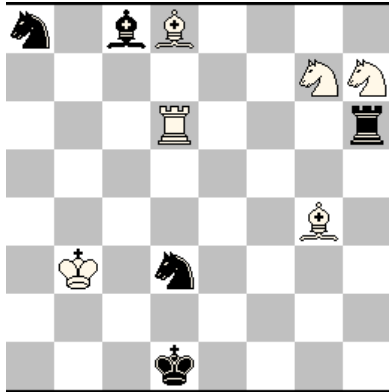


sh#8 (12+11)
Kamikaze

- 1. fe 2. ♙g5 3. ♜g7 4. ♚h2 5. ♞b5 6. ♜d5 7. ♙f5 8. ♞c5 ♜h5#

Madrasi chess - Pieces are paralyzed when attacked by an enemy pieces of the same kind. A paralyzed piece (both side) cannot move and does not give check. They remain paralyzed until one of them is captured or another piece comes on the attack line between them. Unless otherwise stated, Kings cannot be paralyzed. Fairy condition "Madrasi" will be used without Neutral pieces!

e.g. Juraj Lorinc
Mémorial V. Miltner 1995

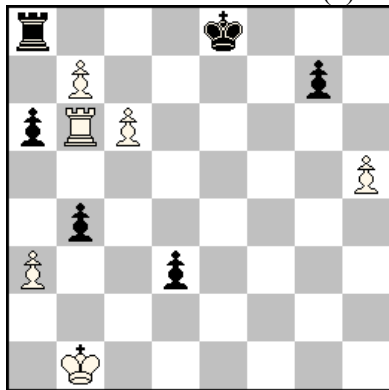


h#2 (6+5)
2.1.1.1
Vertical cylinder
Madrasi

1. ♖f4 ♜b8 2. ♗e6 ♞a6#
1. ♗b4 ♞f8 2. ♗a6 ♞e6#

Maximummer - One side (black, if not said otherwise) must always play its geometrically longest legal moves. A distance between two adjacent orthogonal/horizontal squares is 1, while a distance between two adjacent diagonal squares is $\sqrt{2} \approx 1,41$. The castle's length is the sum of two movements. When there are two or more moves of the same length, the choice is free.

e.g. Valeriu Petrovici
Buletin Problemistic 1999 (v)

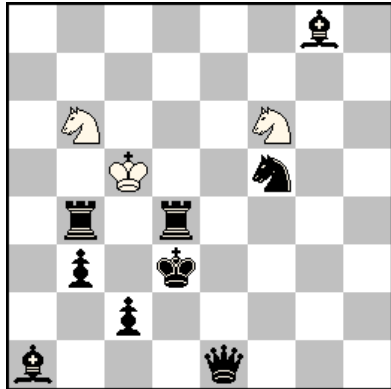


r#5 (6+6)
Maximummer

1. b8 ♞ g5 2. hg e.p. ba 3. ♞d7 0-0-0 4. ♖b2 ♜h8 5. ♜a2 ♜h1#

Patrol chess - A piece may capture or give check only if it is observed by another piece of the same side.

e.g. Frederick H. von Meyenfeldt
feenschach 1979



h#3 (3+9)
Patrol

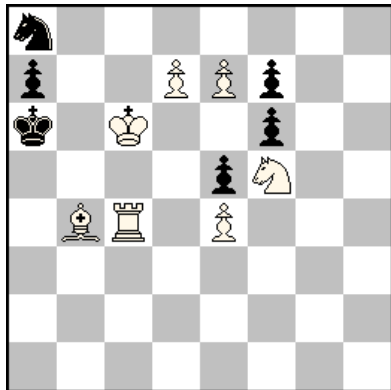
1. ♖d7 ♜fd5 2. ♛e8 ♔d4 3. ♛e1+ ♔e3#

Reflex chess (r#) - A selfmate in which both sides must deliver checkmate if they are able to do when it is their move.

e.g. at Maximummer and Sentinel

Sentinel - On moving a piece leaves behind a Pawn of its own colour on its departure square. The rule does not apply to Pawns, or the pieces moving from the 1st or 8th ranks; nor does it apply if there are 8 Pawns of that colour already on the board.

e.g. Christian Poisson
2 T.T. Phénix 1989-93

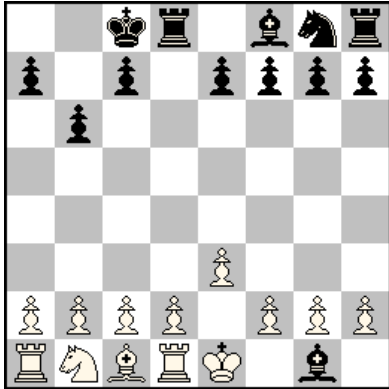


r#2 (7+6)
Sentinel

1. ♔d5(+ç6) zug.
1... ♜b6+ 2. ♔c5(+d5) ♜c8(+b6)#
1... ♜c7+ 2. ♔d6(+d5) ♜e6(+ç7)#
1... ♔b5(+a6) 2. ♙d6(+b4) ♜b6#
1... ♔b6(+a6) 2. ♞d6(+f5) ♜c7#

Take&Make - Having captured, a piece must immediately, as part of its move, make a non-capturing step in imitation of the captured piece from the capture-square. If not such step is available, the capture is illegal. If not said otherwise, a Pawn cannot be placed on its 1st rank as the result of a take&make step after capture. Checks are as in normal chess.

e.g. Friedrich Hariuc
T.T. Andernach 2006

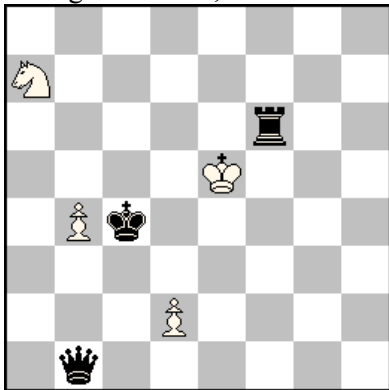


PG 6,5 (13+13)
Take&Make

1. e3 b6 2. ♔a6 ♞a6(♞f1) 3. ♚g4 ♜a6 4. ♛d7(♛d5) ♛d5(♛f3) 5. ♘e2 0-0-0 6. ♖f1(♖g3) ♜e2(♜g1)
7. ♗f3(♗d1)

Anti-Take&Make - A captured piece as part of the move makes a non-capturing step in imitation of its normal movement from the capture-square. If no such step is available, the capture is illegal.

Rodolfo Riva
3 Bulgarian Wine, Kobe 2012



hs#3 (4+3)

2.1.1...

Anti-Take&Make

1. ♘b5 ♛b3 2. ♔e4 ♗f5 3. d3+ ♛d3(d4)#
1. ♘c8 ♛b4(b5) 2. ♘b6+ ♔c5 3. d4+ ♛d4(d5)#

PUBLIC ORGANIZATION TULA REGIONAL CHESS FEDERATION

300034 г.Тула
ул.Вересаева, д.24
тел.+ 7 960 6154534
website: <https://tulachess.ru/>



Russia, 300034, Tula
Veresaeva st., 24
Tel. +7 960 6154534
E-mail: tulachess@mail.ru

В президиум 65th World Congress of Chess Composition

Тульская областная федерация шахмат предлагает провести в Туле (Россия) Первый чемпионат мира по решению шахматных композиций среди женщин в 2024 году. Сроки проведения 26 – 30 сентября 2024г. (сроки проведения окончательно согласовываются с Международной федерацией шахматной композиции).

ПРОГРАММА соревнования:

26 сентября – день приезда, 27 сентября – экскурсионная программа с посещением музея – усадьбы великого русского писателя Льва Толстого; open турнир, 28 сентября – 1 день чемпионата, 29 сентября – 2 день чемпионата, награждение, 30 сентября – день отъезда.

Главный судья и его помощники назначаются Международной федерацией шахматной композиции.

Тульская областная федерация шахмат оплачивает 1 участнику от каждой страны проезд самолетом до Москвы и обратно (эконом тариф), трансфер от аэропорта до отеля, проживание и питание в отеле «SK Royal Tula» (<https://sk-royal.ru/eng/hotels/tula/>).

Взнос за участие не взимается.

To the Presidium of the 65th World Congress of Chess Composition

The Tula Regional Chess Federation proposes to hold in Tula (Russia) the First World Championship for solving chess compositions among women in 2024. Dates 26 – 30 September 2024. (the dates of the event are finally agreed with the World Federation for Chess Composition).

Competition PROGRAM:

September 26 – arrival day, September 27 – excursion program with a visit to the museum – mansion of the great Russian writer Leo Tolstoy; open tournament, September 28 – 1st day of the championship, September 29 – 2nd day of the championship, awarding, September 30 – departure day.

The Chief judge and his assistants are appointed by the World Federation for Chess Composition.

The Tula Regional Chess Federation pays for 1 participant from each country to travel by plane to Moscow and back (economy fare), transfer from the airport to the hotel, accommodation and meals at the SK Royal Tula hotel

(<https://sk-royal.ru/eng/hotels/tula/>).

There is no participation fee.

With respect
Executive Director



Vladimir Afromeev

Ukraine's Proposals for the 65th WCCC Congress (Batumi, 2023)

The teams from Russia and Belarus will not receive formal invitations to participate in next year's Olympic Games in Paris because of the two countries' aggression against Ukraine, the International Olympic Committee announced in a statement on Thursday.

The decision means that when invitations go out to more than 200 countries later this month, a year before the start of the Olympic games as per ritual, Russia and Belarus will not be included.

The IOC's condemnation of Russia and Belarus's participation in "the senseless war" in Ukraine was first issued in February 2022, soon after the full-scale ground invasion began.

The organization soon followed with this resolution:

"In order to protect the integrity of global sports competitions and for the safety of all the participants, the IOC EB recommends that International Sports Federations and sports event organisers not invite or allow the participation of Russian and Belarusian athletes and officials in international competitions."

<https://www.npr.org/2023/07/14/1187641752/ioc-not-invite-russia-and-belarus-to-2024-olympics>

5. Country Members committing acts which run counter to the Statutes of the WFCC or its resolutions and decisions or not fulfilling other duties according to WFCC decisions may be temporarily or definitely excluded from the WFCC by a decision at an Ordinary Meeting of the WFCC, on the proposal of the Presidium.

Annex II to the Statutes of the WFCC

1)

Over and over again, chess composers representing the Russian Federation publicly expressed opposition to the decision taken by the majority of the WFCC Member Countries to remove the aggressor countries (Russia and Belarus) from participating in the WCCT and solving championships. In connection with a gross violation of the WFCC Statutes, which declares that "[t]he goal of the WFCC's existence and work is the dissemination and encouragement of chess composition throughout the world," while the rights of Ukrainian chess composers and solvers are severely infringed upon on account of Russia's war of conquest and occupation of a large part of the territory of Ukraine, **we demand the immediate exclusion of Russia and Belarus from the WFCC.**

2)

We demand **the prolongation of the ban on the participation of the teams of these countries in all competitions held under the auspices of the WFCC.**

3)

We demand **the exclusion of the representatives of these countries from all individual competitions held under the auspices of the WFCC.**

4)

We demand that **no representatives of Russia and Belarus be appointed to judge any competitions (including WCCI) held under the auspices of the WFCC.**

5)

We demand that **Georgy Evseev be removed from the position of the WCCT Committee spokesman.**

6)

We propose that definite regular dates for the WCCT be officially set, so that the tournament is held once in three years at most and the next WCCT is started immediately after the end of the latest WCCT.

7)

In order to boost interest in the art of chess composition, create new incentives and ways for its development – among young newcomers as well as among high-level chess players, we propose that annual cash prizes be established for the composers and teams that have achieved the best results in the previous year; the winners of the prizes can be announced on the International Day of Chess Composition. Based on the 2022 results, the cash prizes could be awarded to all the winners of the WCCI, the three top teams of the WCCT, as well as to the winners of all the sections of the World Cup. The WFCC could ask the 1st Vice-President of the WFCC, Dr. Abdulla Ali Hassan Aal Barket Alameeri, to take care of the implementation of this proposal.

8)

In a recent letter to congress delegates and a number of other colleagues, the WFCC President expressed his concern for the future of the composition:

I hope we will devote most of our energy to essential topics for the future and survival of chess composition.

In OTB chess, the criteria for obtaining the title of international grandmaster are such that particularly talented young people can become IGs at the age of 14-15; the IG norm for solvers can realistically be achieved at a slightly older age. But in the field of composition, the norm implies that most high-level composers have to work for dozens of years; the key to the IG title is only the FIDE Album – and to many composers focusing on **extremely high quality of unique compositions** rather than on large number of problems of a level that is simply higher than average but not uniquely high, this title is unachievable within the space of many Albums. Suffice it to say that three-time world champion in retroanalysis has only 50.50 album points in the table on the WFCC website and the two-time world champion in retroanalysis has 39.33 points. Such a situation puts composers in an inferior, almost humiliating position. One spear throw or one long or high jump is enough to become an Olympic champion. But it is hardly possible to attract young people to the field of composition by informing them that after 70 compositions of a high level they will become international grandmasters by the time they are old.

In this connection, we propose that a committee (subcommittee) be set up to develop, before the next WCCC, changes to the rules for achieving international titles in composition, making it possible to gain titles based on the results of WCCI, WCCT and the World Cup, as well as, possibly, other competitions that will be organized at some point in the future under the auspices of the WFCC. A similar idea was already proposed several years ago, but it was not supported. Certainly, that was not an encouraging decision for potential high-level composers.

9)

It is suggested that all proposals received for consideration at a WCCC be published on the WFCC website 5 days before the beginning of the congress.

Valery Kopyl

Ukraine's Delegate to the WFCC

Dear WFCC delegates,

We are in front of a great mission: organizing for the first time an official World Youth Solving Chess Championship (WYCSC) and implementing it in the frame of the World Youth Chess Championship over-the-board, during the free day (middle of the competition), under the aegis of FIDE, but with WFCC deciding upon the rules and the top-management (as names).

In the present, next year and probably in the future, too, WYCC for standard chess is splitted in two competitions (8,10,12 and 14,16,18) with different periods and host countries. It is expected to have a higher interest and participation for solving at 8-12 years, so called „cadets” (747 participants otb in 2022 vs 620 participants otb 14-18 years).

To be realistic, not all the trainers and heads of delegations would be delighted to have solving in the frame of OTB chess, but they will have to face the insistence of some parents to allow their children to participate at solving.

Worse is the fact that some organizers are treating solving as an unwanted supplementary task, which mainly creates them the stress of greater logistics efforts, e.g. the number of boards (1 participant/board, not 2/board as at the otb tournament).

For avoiding more difficulties about organizing the series, I consider that every category of age to have its own set of problems (same for boys and girls). Otherwise, two categories with the same subject (e.g. 8 and 10 years) would have to be held in parallel, which can imply great problems of space.

I think that one of our main strategically aims for youth solving is to gain popularity, so we do not intend to scare anybody with selfmates and helpmates, at the first edition (2024). We know already the venue for 14-18 years (Brazil), meanwhile the venue for cadets has to be decided by FIDE at the Congress in October, between four countries (India, Italy, Montenegro, Romania).

Keeping into regard these above, my proposal for **WYCSC 2024** is as follows:

U8

60 min. (4x2#, 1x3#, 1 eg)

U10

60 min. (4x2#, 1x3#, 1 eg)

U12

60 min, (3x2#, 1x3#, 1x4#, 1 eg)

U14

90 min. (3x2#, 3x3#, 1x4#, 2 eg)

U16

90 min. (3x2#, 3x3#, 1x4#, 2 eg)

U18

90 min. (3x2#, 3x3#, 1x4#, 2 eg)

For **WYCSC 2025**, I have already the next proposal, a priori conditioned by a success of the edition 2024:

U8-12: as in 2024

U14

90 min. (2x2#, 2x3#, 1x4#, 2 eg, 1xh#2, 1xs#2)

U16

90 min. (2x2#, 2x3#, 1x4#, 2 eg, 1xh#2, 1xs#2)

U18

90 min. (2x2#, 2x3#, 1x4#, 2 eg, 1xh#2, 1xs#2)

Grid of points type WCSC, but with 1 p. given for indicating even only the key at 3# or 4#.

Staff for WYCSC 8-12 (same situation at WYCSC 14-18):

- 1 director (selector of problems);
- 1 local controller with experience in organizing and judging solving competitions (it can be from the otb arbiters of WYCC or the director himself or another person competent in solving);
- 1 assistant at marking the points (from the otb arbiters, preferable with experience in solving);
- hall arbiters: as many as necessary (from the otb arbiters; volunteers are undesirable).

Organizing from 2006 the Romanian National Youth Solving Championship (as well as the adults and seniors solving finals), on 7 categories of age (8-20 years, each with its own set of problems), I can say that the main challenge of the selector is to make the subjects in crescendo as difficulty, from an age to another.

On the other hand, anticheating is one of the main duties of the local controller. From the beginning of my involvement in solving as arbiter, I have forbidden the visit to the toilet during the competition at all ages (...from kindergarten to oldboys); if somebody has a medical problem related to this, he/she has to show a certificate, but nobody has done it, in all these many years.

Because some of participants would come only for solving (thus in the middle of a long otb competition), it is to be taken into account the possible scheduling of the award ceremony in the day after solving.

Yours sincerely,

Dinu-Ioan Nicula
Vicepresident WFCC
Delegate of Romania

Statutes changes to make work easier

In order to adjust to demands of time, we have to remove some obstacles imposed by the Statutes.

1) Such is selection of the Treasurer among members of the Presidium. This rule creates problems when no member of the Presidium is ready to accept this duty.

Current Statutes, page 8:

9.1 Presidium members

The members of the Presidium are:

- the President
- the first, second and third Vice-Presidents

The Presidium decides on which Vice-President assumes the office of Treasurer.

Proposal 1: to replace the last sentence with the following one:

The Presidium appoints the Treasurer.

2)The rules for admission of Member Countries should be relaxed to adjust to the current reality.

Current Statutes, page 12

Annex II: Detailed rules for the admission and expulsion of Member Countries

1. Visible activity in the composing and solving of chess problems or studies must exist in a country applying for admission to the WCCF.

Proposal 2: to replace the words “in the composing and solving”, with the words “in the composing or solving”

WORLD FEDERATION FOR CHESS COMPOSITION

Income Statement: Budget to ACTUAL 2022-2023

Budget WCCC 2022	2022-23	
	Income	Expense
FIDE	€ 3,000.00	
ISC 2022		€ 150.00
WCSC 2022		€ 500.00
WCCI 2019-2021		€ 500.00
WCCT 2020-2023		€ 100.00
YCCC 2022		€ 100.00
IT		€ 600.00
ECSC 2023		€ 500.00
Banking		€ 100.00
Other expenses		€ 150.00
WSC 2021-22		€ 300.00
Total	€ 3,000.00	€ 3,000.00
Income (+) / Loss (-)	€ 0.00	

Earnings 2022-23	2022 Jul-Nov		2022 Nov - 2023 Jun		Total 2022-23	
	Income	Expense	Income	Expense	Income	Expense
	€ 0.00		€ 0.00		€ 0.00	
ISC 2022		€ 150.00				€ 150.00
WCSC 2022		€ 500.00				€ 500.00
						€ 0.00
WCCT 2020-2023		€ 100.00				€ 100.00
						€ 0.00
IT (websites)		€ 389.52				€ 389.52
						€ 0.00
Banking		€ 25.55		€ 35.00		€ 60.55
						€ 0.00
WSC 2021-22		€ 300.00				€ 300.00
Total	€ 0.00	€ 1,465.07	€ 0.00	€ 35.00	€ 0.00	€ 1,500.07
Income (+) / Loss (-)	-€ 1,465.07		-€ 35.00		-€ 1,500.07	

WORLD FEDERATION FOR CHESS COMPOSITION**Income Statement: The BUDGET 2023-2026**

Budget WCCC 2023-26	2023-24		2024-25		2025-26	
	Income	Expense	Income	Expense	Income	Expense
FIDE	€ 3,000.00		€ 3,000.00		€ 3,000.00	
Fujairah Government (conditional*)	€ 5,000.00		€ 5,000.00		€ 5,000.00	
ISC 2023 / 2024 / 2025		€ 150.00		€ 150.00		€ 150.00
WCSC 2023 / 2024 / 2025(*)		€ 500.00		€ 500.00		€ 500.00
WCCI 2022-2024						€ 500.00
WCCC 2024 / 2025(*)				€ 1,000.00		€ 1,000.00
YCCC 2023 / 2024 / 2025		€ 100.00		€ 100.00		€ 2,500.00
IT (websites)		€ 500.00		€ 500.00		€ 500.00
ECSC 2024 / 2025 / 2026(*)		€ 500.00		€ 500.00		€ 500.00
Banking		€ 100.00		€ 100.00		€ 100.00
Other expenses		€ 100.00		€ 100.00		€ 100.00
WSC 2022-23 / 2023-24 / 2024-25		€ 300.00		€ 300.00		€ 300.00
Total	€ 8,000.00	€ 2,250.00	€ 8,000.00	€ 3,250.00	€ 8,000.00	€ 6,150.00
Income (+) / Loss (-)	€ 5,750.00		€ 4,750.00		€ 1,850.00	

(*) Conditional yearly support by Fujairah government means the support of concrete WFCC projects. The projects of each year should be agreed in the budget, with the obligation of WFCC to have Fujairah Government logo for each supported project (banner, website, booklet etc.)

WORLD FEDERATION FOR CHESS COMPOSITION**Balance Sheet 30.06.2023**

Assets	30.11.2022	30.06.2023
Bank	€ 3,014.48	€ 2,979.48
Debtors	€ 0.00	€ 0.00
Total	€ 3,014.48	€ 2,979.48

Liabilities and Equity	30.11.2022	30.06.2023
<i>Retained earnings 01.07.2022</i>	€ 4,479.55	€ 4,479.55
<i>Profit (+) / Loss(-) 2022-2023</i>	-€ 1,465.07	-€ 1,500.07
Total Equity	€ 3,014.48	€ 2,979.48
Creditors	€ 0.00	€ 0.00
Total	€ 3,014.48	€ 2,979.48

2.10. Jiří Jelínek: Chess Composition Day (information to discuss)

Information about the text in the Bohemian weekly magazine Svetozor from 4 Jan. 1869 is **not correct**. I attach a link to Svetozor from **Jan. 2** (not Jan. 4!!) 1869 where no text of such character exists. The text that should be understood as essay about composition is published in **Svetozor, 19 February 1869** (page 68) where the unknown author (editor?) describes what the composition is and what it means: **Krátké povídání o úlohách** (in English: Short essay about compositions). There are many continuations of this article from February to May 1869, see links.

In short: in the 2nd par. of this Article from Febr. 19, 1869, the text tells: *úloha je.... dílo umělecké*, i.e. **the composition is the work of art**.

It is therefore recommended to **amend the date** of the International Day and to **celebrate the International Day of Composition in February 19** (not in Jan. 4).

2.1.1869 (page 10)

<https://www.digitalniknihovna.cz/nkp/view/uuid:ee222eba-435d-11dd-b505-00145e5790ea?page=uuid:ec69ee3a-3c45-403b-b8aa-982cbf6c9738>

19.2.1869 (page 68) Krátké pojednání o úlohách (Short essay about compositions)

<https://www.digitalniknihovna.cz/nkp/view/uuid:ee2255d1-435d-11dd-b505-00145e5790ea?page=uuid:1a05d634-0760-4032-811a-c24b474a8df9>

to be continued 26.2.1869 (page 76)

<https://www.digitalniknihovna.cz/nkp/view/uuid:ee227ce2-435d-11dd-b505-00145e5790ea?page=uuid:076fbc59-c489-4e7c-9cc5-191375a17443>

to be continued 5.3.1869 (page 84)

<https://www.digitalniknihovna.cz/nkp/view/uuid:ee227ce3-435d-11dd-b505-00145e5790ea?page=uuid:8cb79027-90b8-43e3-ac2e-50edb04da54c>

to be continued 12.3.1869 (page 92)

<https://www.digitalniknihovna.cz/nkp/view/uuid:ee227ce4-435d-11dd-b505-00145e5790ea?page=uuid:5176cef8-2494-4727-a686-c0dea>

to be continued 19.3.1869 (page 102)

<https://www.digitalniknihovna.cz/nkp/view/uuid:ee227ce5-435d-11dd-b505-00145e5790ea?page=uuid:c480603e-19ba-44ba-860b-784307818cfe>

to be continued 26.3.1869 (page 112)

<https://www.digitalniknihovna.cz/nkp/view/uuid:ee227ce6-435d-11dd-b505-00145e5790ea?page=uuid:7d21a9f2-6939-4451-97dc-885c4c808bbb>

to be continued 9.4.1869 (page 128)

<https://www.digitalniknihovna.cz/nkp/view/uuid:ee22a3f8-435d-11dd-b505-00145e5790ea?page=uuid:d09580a7-32bf-45a1-9f15-524f35e7e914>

to be continued 16.4.1869 (page 136)

<https://www.digitalniknihovna.cz/nkp/view/uuid:ee25ff59-435d-11dd-b505-00145e5790ea?page=uuid:8031f106-ebb9-45ed-a971-89bd51de6d34>

to be continued 30.4.1869 (page 152)

<https://www.digitalniknihovna.cz/nkp/view/uuid:ee25ff5b-435d-11dd-b505-00145e5790ea?page=uuid:c142e06e-6d2a-48d9-a016-4c02721a985d>

to be continued 7.5.1869 (page 160)

<https://www.digitalniknihovna.cz/nkp/view/uuid:ee26e9bc-435d-11dd-b505-00145e5790ea?page=uuid:c9352546-f838-4a3c-bc90-4a5c15a519d9>

to be continued 28.5.1869 (page 184)

<https://www.digitalniknihovna.cz/nkp/view/uuid:ee2710cf-435d-11dd-b505-00145e5790ea?page=uuid:1490b687-f848-4542-8f89-644d36cf1d34>

Jiří Jelínek, Praha, Czechia

Sdružení šachových problémistů, President (Association of Chess Problemists)

MK: Now, another intriguing fact jumped out: 19. February is exactly the birthday of Valentin Rudenko...

I checked "Chess problem of XIX Century" by E. Umnov (1960) considering that book as the main historical reference for Soviet composers, including Valentin...Evgeny Umnov (on page 118) writes the article "Short essay about compositions" was appearing "from January to April 1869" (not from February), and that the author of this series of articles was Antonin Koenig himself. As the reference he quoted the same article reproduced by Ilja Mikan (Druha tast, Praha, 1939).

JJ: In my opinion, the date of Jan 4 is a normal (humane) mistake (something like "a typo" in the PC times?), and coincidence at the same time (hard to be resolved) compared to other possible days. And V. Rudenko birthday on Febr. 19 is really a very happy date to celebrate (simultaneously) the chess composition and his birthday as well!

Ilja Mikan published a complete König's *Short essay about compositions* in his own brochure called: **Antonín König, 2. část** (i.e. the second part) having typed the whole text on several pages with stamped diagrams (7 copies issued only) in May 1939, Praha. Unfortunately, this material is not available in any Czech library, nor with any Czech collector of chess literature. This paper document is, however, available at Haag in the KB Nationale Biblioteek:

<https://webggc.oclc.org/cbs/DB=2.37/SET=2/TTL=21/SHW?FRST=30>

<https://www.kb.nl/en/contact-us>

As I understand, they expect to pay for their services. It would be better to have the brochure in hands (a scan copy acceptable from the KB library) which is a question of paying for it.

Andrey Frolkin: Overall positions of composers and solvers

At the least, chess composers should enjoy the same respect and be provided with the same opportunities for winning titles, prizes, etc., as solvers.

Solving is a derivative of composing. In the absence of compositions (and composers), solving is impossible. In the absence of solvers, composing can still be meaningful. I suppose there may be some complicated problems or endgame studies that have never been solved by anyone; but chess composition fans can still enjoy reading the description of the solution of such problems. Chess composers should not find themselves in a position inferior to that of solvers – in terms of amounts of money prizes, opportunities for winning titles, numbers of official events.