



24th INTERNATIONAL CHESS SOLVING CHAMPIONSHIP OF SLOVAKIA 2016

Date

12th - 13th March 2016

Tournament venue

Clubroom ŠK Slovan Bratislava, Černyševského 8, Bratislava

System of competition

Championship is open for everybody

System and rules are the same as in the World Chess Solving Championship.

Additionally, there will be International category for Seniors (above 60) and National category for Juniors (under 23). At least three solvers in each category are required.

Time plan

Friday:	11th March 2016	Arrival of participants
Saturday:	12th March 2016	9 ⁰⁰ – 9 ³⁰ Registration 9 ³⁰ – 13 ⁰⁰ rounds I. – III. 15 ⁰⁰ – 18 ⁰⁰ quick solving, solving show
Sunday:	13th March 2016	9 ⁰⁰ – 12 ³⁰ rounds IV. – VI. 13 ⁰⁰ – 13 ³⁰ Prizegiving

Entry fee

10 €

GM, IM, juniors (under 23) and women free

Prizes

Prizes will be fixed after first day.

Entry deadline

1st March 2016

Contact

Send your registration to:
marek.kolcak@gmail.com

Website: <http://www.soks.sk/>

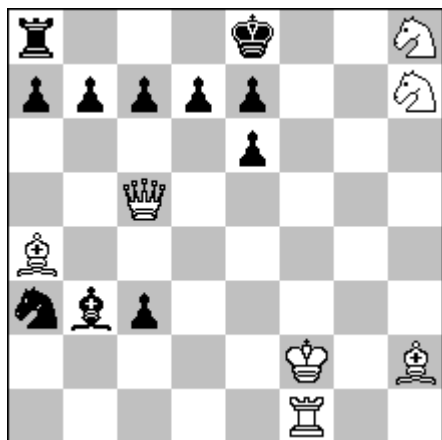
Tournament is registered for World Solving Cup

Chess Composing Tourney on occasion of the 24th International Solving Championship of Slovakia

On occasion of the 24th International Solving Championship of Slovakia, held in Bratislava, from March 12th to March 13th, 2016, the Slovak Chess Composition Organization (SOKŠ) announces an international composing tourney for orthodox twomovers. The following “theme” is required: orthodox twomover with retro elements. Twins or zero-position are allowed. Fairy units or conditions are forbidden. Entries have to be emailed at latest by February 29th, 2016 to marek.kolcak@gmail.com. Judge Oto Mihalčo will receive the compositions without names of authors. The tourney is open worldwide. Book prizes are guaranteed. A special prize (a bottle of slivovica) will be given to the best placed composer, participating at the Solving Championship. The award will be published during the prize-giving ceremony on March, 13th, 2016 in Bratislava.

Example

Marjan Kovačević
Problem 1981



2X C+ (7+11)

- | | |
|--------------|--|
| A: diagram | 1.Kg1! (2.Rf8#) 1...0-0-0 2-Qxc7# |
| B: black Ba3 | 1.Ke1! (2.Rf8#) 1...0-0-0 2-Qxc7# |
| C: black Ra3 | 1.Ke3! (2.Rf8#) 1...0-0-0 2-Qxc7# |
| D: black Qa3 | 1.Kg3! (2.Rf8#) |

In position D 1...0-0-0 is forbidden, because black king moved to free black queen. Bb3 is promoted and no other promoted black piece is possible (seven black pawns).