

## The 20th Japanese Sake Tourney Award

**Theme:** H#2 Series Capture. No other fairy conditions or pieces are allowed. Only computer-tested problems will be accepted. For testing, you need Popeye 4.89.

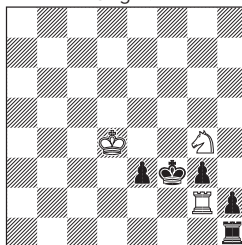
**Judges:** Tadashi Wakashima and Sanjiro Yasunaga

### Definition

Series Capture: At the end of capturing moves, the moving piece can optionally make another movement (possibly capturing) according to its type; if this added movement captures a piece as well, the moving piece can make another such movement, and so on. Each step of a series has to be legal. Only the last step of a series may give check to the opposite king. Series Capture does not modify the meaning of "check" : a king is not in check if he could only be captured by a Series Capture specific series of captures.

## Examples

Ex.1 Tadashi Wakashima  
Original

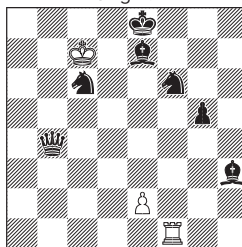


H#2 Series Capture (3+5)  
b) Ph2→h4

- a) 1.Kxg2-g1 Kxe3-e2  
2.g2 Sxh2-f3#  
b) 1.Kxg4-h3 Kxe3-f3  
2.Rg1 Rxg1-h1#.

Zilahi.

Ex.2 Toshimasa Fujiwara  
Original

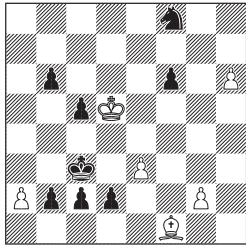


H#2 Series Capture (3+7)  
2 sols

- 1.Sd8 e3  
2.Qf4+ exf4xg5xf6xe7xd8=Q#  
1.Bd7 e4  
2.Sd5+ exd5xc6xd7#.

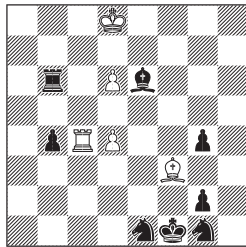
A pair of multiple captures.

**01** Thomas Maeder  
Batumi 2023 Sake 1st Pr



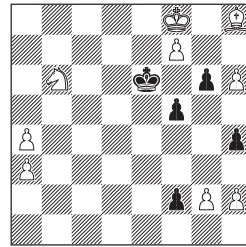
H#2 Series Capture (6+8)  
b) Pg2→f5

**02** Juraj Lörinc  
Emil Klemanič  
Batumi 2023 Sake 2nd Pr



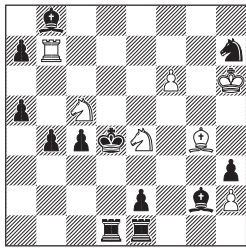
H#2 Series Capture (5+8)  
2 sols

**03** Valery Gurov  
Georgy Evseev  
Batumi 2023 Sake 3rd Pr



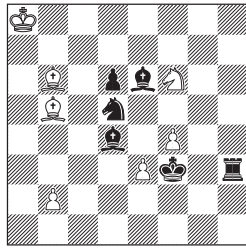
H#2 Series Capture (9+5)  
b) Pf5→d6

**04** Valery Gurov  
Georgy Evseev  
Batumi 2023 Sake 4th Pr



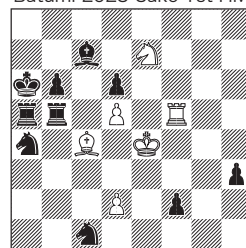
H#2 Series Capture (7+12)  
2 sols

**05** Kjell Widlert  
Batumi 2023 Sake 5th Pr



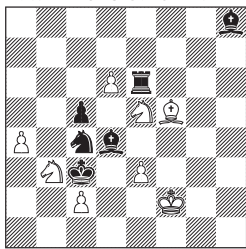
H#2 Series Capture (7+6)  
b) Pe3→e4

**06** Ofer Comay  
Jonathan Mestel  
Batumi 2023 Sake 1st HM



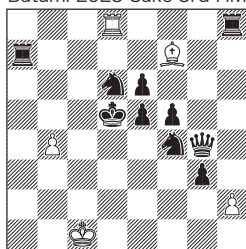
H#2 Series Capture (6+10)  
2 sols

**07** Vlaicu Crisan  
Eric Huber  
Batumi 2023 Sake 2nd HM



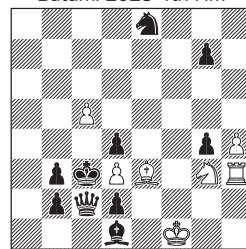
H#2 Series Capture (8+6)  
2 sols

**08** Thomas Maeder  
Kjell Widlert  
Batumi 2023 Sake 3rd HM



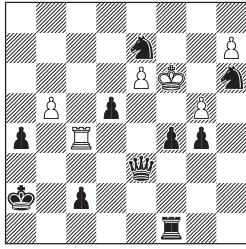
H#2 Series Capture (5+10)  
b) Pe5→c4

**09** Thomas Maeder  
Kjell Widlert  
Batumi 2023 4th HM



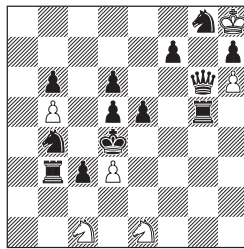
H#2 Series Capture (7+10)  
b) Pd2→g6

10 Ofer Comay  
Batumi 2023 Sake 5th HM



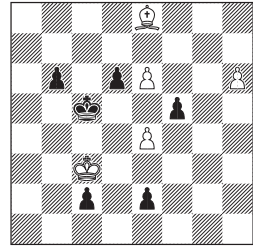
H#2 Series Capture (6+10)  
2 sols

11 Valery Gurov  
Georgy Evseev  
Batumi 2023 Sake 6th HM



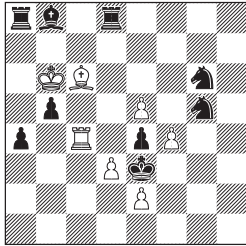
H#2 Series Capture (6+13)  
2 sols

12 Hiroaki Maeshima  
Batumi 2023 Sake Comm



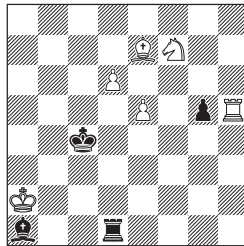
H#2 Series Capture (5+6)  
2 sols

13 Kostas Prentos  
Batumi 2023 Sake Comm



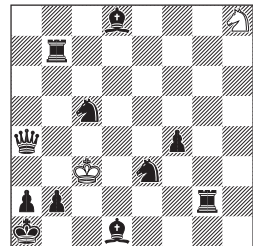
H#2 Series Capture (7+9)  
b) Kb6→a3

14 Kostas Prentos  
Batumi 2023 Sake Comm



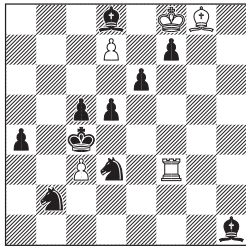
H#2 Series Capture (6+4)  
2 sols

15 Andy Ooms  
Batumi 2023 Sake Comm



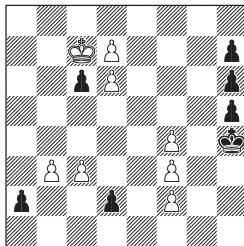
H#2 Series Capture (2+11)  
2 sols

16 G. Costeff, P. Einat  
M. Witztum, O. Comay  
Batumi 2023 Sake Comm



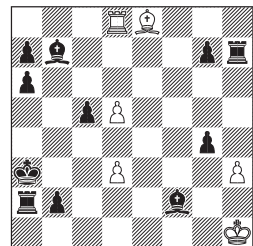
H#2 Series Capture (5+10)  
2 sols

17 Themis Argirakopoulos  
Kostas Prentos  
Batumi 2023 Sake Comm



H#2 Series Capture (8+7)  
b) Kh4→a3  
c) Kh4→h8  
d) Pa2→d4

18 Menachem Witztum  
Ricardo de Mattos Vieira  
Batumi 2023 Sake Comm



H#2 Series Capture (6+11)  
b) wRd8→wB

We received 41 problems. The overall quality of entries is exceptionally good. As usual for this tourney, those problems that illustrate the strategies specific to this new condition will be highly evaluated.

## **Prizes**

### **01 (Maeder)**

a) 1.b1=Q e4!  
2.Qxf1xg2-g7  
hxg7xf8=R!xf6xb6-b3#  
b) 1.d1=S Ke4!  
2.Sxe3xf5-g7  
hxg7xf8=B!xc5xb6-a4#

Composer: Specific motivation for white under-promotions. Specific check prevention to avoid interruption of black capture series. Allumwandlung.

TW: The same scheme as the 3rd Pr winner, but this one is better on the strength of check prevention by White. The diagram is clean and pleasant to the eye.

### **02 (Lörinc, Klemanič)**

1.Rb7! Rxb4xb7-f7  
2.Bf5 Bxg4xf5-d3 #  
(1.Rb5? Rxb4xb5-f5 - not enough space on the vertical line)  
1.Bc8! Bxg4xc8-a6  
2.Rb5 Rxb4xb5-f5 #  
(1.Bd7? Bxg4xd7-b5 - not enough

space on the diagonal line)

Composers: D-O echo of battery creation and firing. In order to give double check, the battery line paradoxically needs to be masked first in B2. Choice of the correct square in B1. Reciprocal change of functions wB-wR, bB-bR.

TW: There were several entries which tried R/B reciprocal battery creation, but this one is the best with the masking strategy by Black. The tries also greatly enhance the theme.

### **03 (Gurov, Evseev)**

a)1.f1=S g4  
2.Sxh2xg4xh6-g8 f7xg8=R-g6#  
b)1.f1=Q h3  
2.Qf1xg2xh3xa3xa4-e8+  
f7xe8=B-d7 #

Coposers: Bicolor AUW. Promotion strictly to R/B on mating move (impossible in orthodox chess).

TW: R/B promotion is motivated by the check prevention on the promoting squares. Compare with the 1st Pr winner, which is more subtle.

### **04 (Gurov, Evseev)**

1.Rd3 Sxd3xe1xg2-f4  
2.Kxe4xf4xg4-h4 Rxb8xb4xc4 #  
1.Rd2 Sxd2xc4xa5-c6+  
2.Kxc5xc6xb7-a8 Bxh3xg2 #

Coposers: Mates on very remote squares. Zilahi. Change of functions of white knights (active/passive sacrifice).

TW: Very funny. Absolutely the best among non-strategic entries.

### 05 (Widlert)

- a) 1.Be5? Ba5 2.Kxe3-d4 Bb6+  
3.Sxb6!  
1.Sc3! Bxd4xc3-a5 2.Kxe3-d4 Bb6#  
b) 1.Se7? Sh7 2.Kxe4-d5 Sf6+  
3.Bxf6!  
1.Be3! Sxd5xe3-g4 2.Kxe4-d5 Sf6#

Composer: 2x roundtrip (in two moves!), with Kniest, exchange of functions Bb6/Sf6 and Bd4/Sd5. Model mates.

TW: Beautiful rendering of 2x rundlauf gives the strong artistic impression. Lovely.

### Honorable Mentions

#### 06 (Comay, Mestel)

- 1.f1=R! Sc6! (Sc8?)  
2.Rf1xf5-f1! Bxf1xh3-c8#  
1.f1=B! Sc8! (Sc6?)  
2.Bf1xc4-f1! Rxf1xc1xc7-a7#.

Composers: The switchbacks in one move and the mutual interferences between white R/B are unique features of the serial-capture condition.

TW: A good strategy. No one else

has come up this idea.

#### 07 (Crisan, Huber)

- 1.Sxd6xf5xe3-c4+ Sxd4xe6xc5-b3  
2.Kxc2-d1 Sxc4-e3 #  
1.Re7 Sxc5-d7  
2.Sxe5xd7-f8 dxe7xf8=Qxh8xd4 #

Composers: Zilahi. The two white pieces that give mate in one phase are captured in the other phase.

TW: Bizarre presentation of two completely different solutions.

#### 08 (Maeder, Widlert)

- a) 1.Re8? hxg2xf4xe5xd6-d7  
2.Qd4 dxe8=Q+??  
1.Rxd8!-e8 hxg2xf4xe5xd6-d7  
2.Qd4 dxe8=Qxe6  
b) 1.Rd7? h3  
2.Se8 hxg4xf5xe6xd7+??  
1.Rxf7!-d7 h3  
2.Se8 hxg4xf5xe6xd7xe8=Q#

Composers: In each twin, a white officer is captured to avoid a check that would prematurely terminate a white capture series.

TW: Check prevention by capture of White pieces.

#### 09 (Maeder, Widlert)

- a) 1.Sf6! Bh6!  
2.gxh6-h5 Sxh5xf6-d5#  
b) 1.Sc7! Sf5!  
2.gxf5-f4 Bxf4xd6xc7xa4#

Composers: W1 offers a piece for Black to capture, so that B2 can offer a piece to capture in W2. B1 completes the mating capture series. TW: The theme is not so interesting, but the presentation is flawless.

### 10 (Comay)

1.a3 Rxf4xf1-b1  
2.Seg8! hxg8xh6xg4xe3xd5-c3#  
(Try: 2.Shg8? hxg8xe7xd5-c3#?  
3.Qxc3!)  
1.Ka3 Rxc2-b2  
2.Shg8! hxg8xe7xd5xe3-c4#  
(Try: 2.Seg8? hxg8xh6xg4xe3-c4#?  
3.dxc4!)

TW: Fine chameleon echo with clockwise and counter-clockwise series captures by S.

### 11 (Gurov, Evseev)

1.Sb4~ ?? 2.Rxb5-c5 Sc2#??  
(no tempo)  
1. Sa2 Sxa2-b4 2.Rxb4xb5-c5 ??  
1. Sa2 Sxa2-c1!  
2.Rxb5-c5 Se1-c2#  
1.Rg5~ ?? 2.Qxh6-e3 Sxb3#??  
(no tempo)  
1.Rg2 Sg2-f4 2.Qxh6xf4-e3 ??  
1.Rg2 Sxg2-e1!  
2.Qxh6-e3 Sxb3#

TW: Interesting tempo motivation of switchback by Series Capture.

### Commendations (without order)

#### 12 (Maeshima)

1.c1=B e7  
2.Bxh6-f8 exf8=S-e6#  
1.e1=R h7  
2.Rxe6xe8-g8 hxg8=Q-c4#

Composer: Ceriani-Frolkin and mixed AUW (and also Zilahi). I think this matrix (mixed AUW + black Ceriani-Frolkin against white pawns) cannot be done without fairy conditions in H#2.

#### 13 (Prentos)

a) 1.Bd6 (1.Bxe5-d6?) Bxb5xa4-b3  
2.Kxf4xe5-d5 Rxe4#  
b) 1.Rd4 (1.Rxd3-d4?)  
Rxa4xa8xb8-c8  
2.Kxe2xd3-c4 Bxe4#

Composer: On the first move, Black blocks a flight square, but avoids the additional capture of a white pawn, because that would break the chain of pawns needed to transport the bK on the 2nd move. White creates a reciprocal battery: the rear piece reaches its final destination with the help of a series of captures. Later, the front piece fires the battery, playing on the same square.

#### 14 (Prentos)

1.Bxe5-c3 Rxcg5-a5 2.Rxd6-d4 Se5#

1.Rxd6-d3 Bxg5-d2 2.Bxe5-d4 Sd6#

Composer: Both white pawns d6, e5 are eliminated on B1 and B2, in order to open white lines, and vacate the mating square for the wS. The black pieces block two squares in the King' s court, with come-and-go over the critical square d4. On W1, the bPg5 is also captured, resulting in two distinct mates without any pawns on the board.

### 15 (Ooms)

1.b1=R Sf7

2.Rb2

Sxd8xb7xc5xa4xb2xd1xe3-c2 #

1.b1=B Sg6

2.Rb2

Sxf4xg2xe3xd1xb2xa4xc5-b3 #

Composer: Black's minor promotion is followed by an active rook sacrifice on the field that was left by the black pawn. Followed by a SeriesCapture with 7 captures.

### 16 (Costeff, Einat, Menachem, Comay)

1.Bg5 d8=S

2.Sf4 Sxf7xg5xe6xf4xd5-c7 #

1.Bf6 d8=R

2.Se5 Rxd5xe5xe6xf6xf7-b7 #

Composers: Minor promotions & battery opening mates emphasizing unified geometry.

### 17 (Prentos, Argirakopoulos)

a) 1.d1=R d8=R

2.Rxd6-d1 Rxd1-h1#

b) 1.d1=Q d8=Q

2.Qxb3-b8 Qxb8-b4#

c) 1.d1=B d8=B

2.Bxb3-g8 Bf6#

d) 1.d1=S d8=S

2.Sxf2-h3 Sxc6xd4-f5#

Composers: Babson.

### 18 (Menachem, Vieira)

1.Ba8 Kg2

2.Rxh3xd3-b3 Rxa8xa7xg7xg4-a4 #

1.Rh4 Kh2

2.Bxd5-b3 Bxh4xf2xc5 #

Composers: All moves are directly (B2 and W2) or indirectly (B1 and W1) related to the fairy condition: B1 enables W2 series capture; W1 turns the illegal first step of B2 series capture into a legal step; B2 – black series capture; W2 – white series capture.