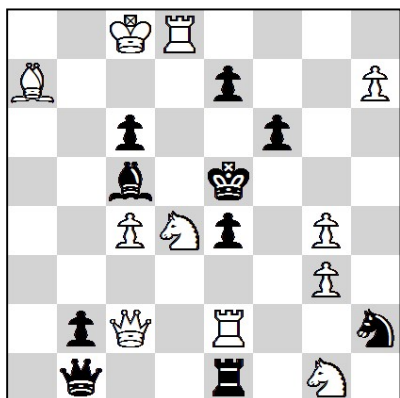


# 43rd French Chess Solving Championship 2022

04.06.2022 - (150')

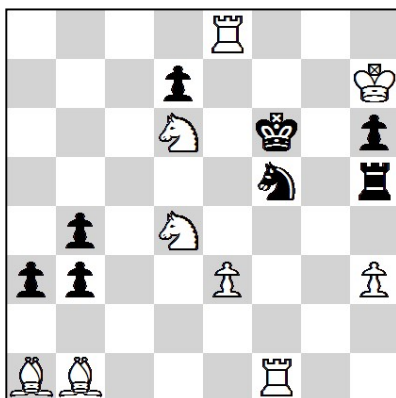
1.



#2

11 + 10

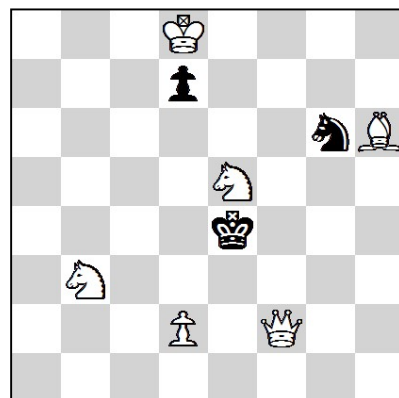
2.



#2

9 + 8

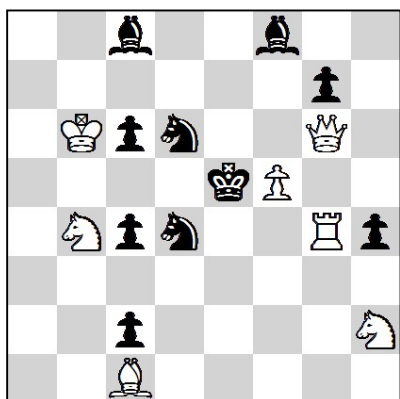
3.



#3

6 + 3

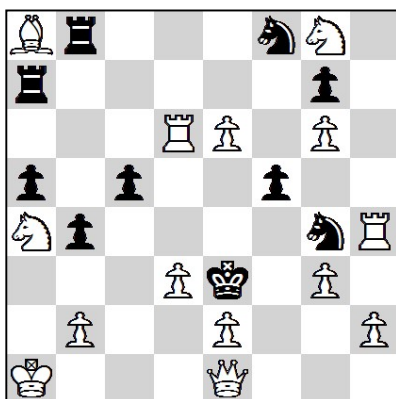
4.



#3

7 + 10

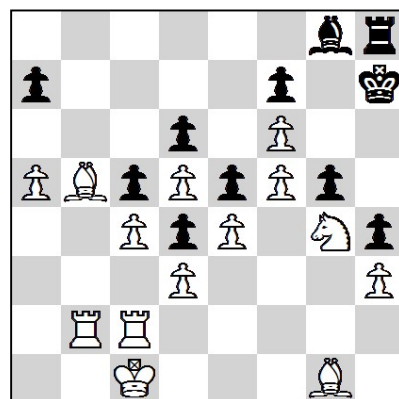
5.



#4

14 + 10

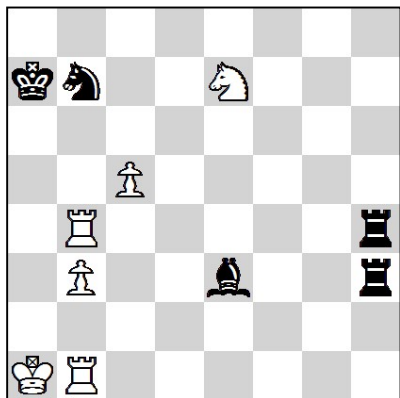
6.



#6

14 + 11

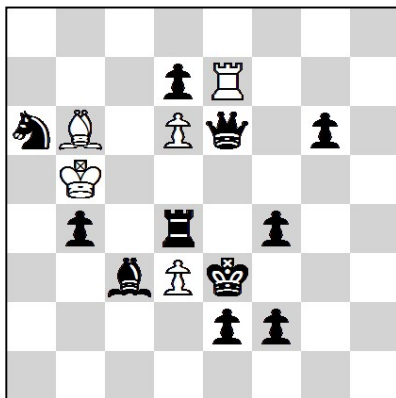
7.



+

6 + 5

8.

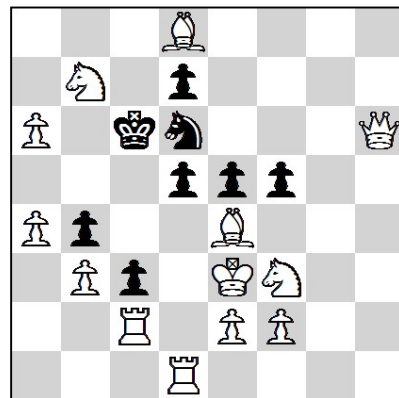


H#3

b) - pf4

5 + 11

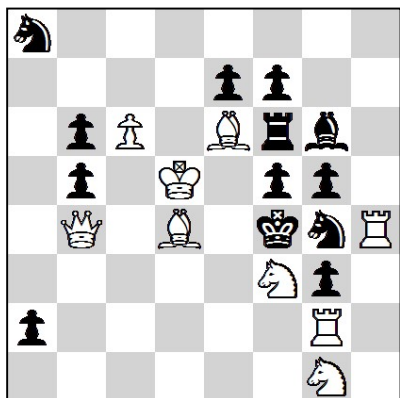
9.



S#2

13 + 8

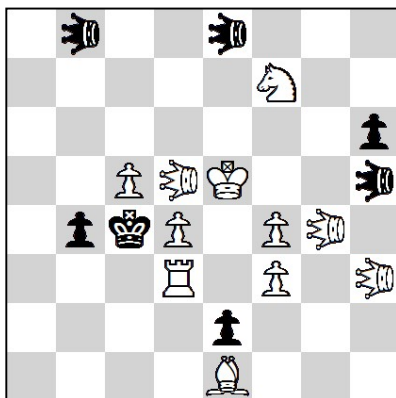
10.



S#4

9 + 13

11.

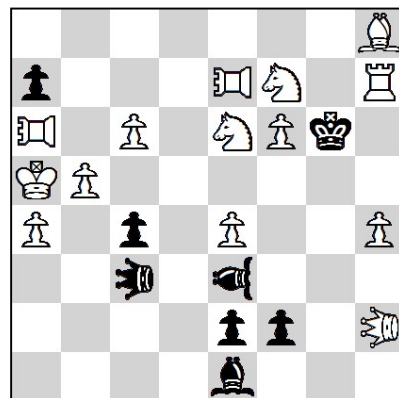


#2(F)

♘♙ = Leo

11 + 7

12.



S#2(F)

♘♙ = Leo

♖ = Pao

♞ = Vao

14 + 8