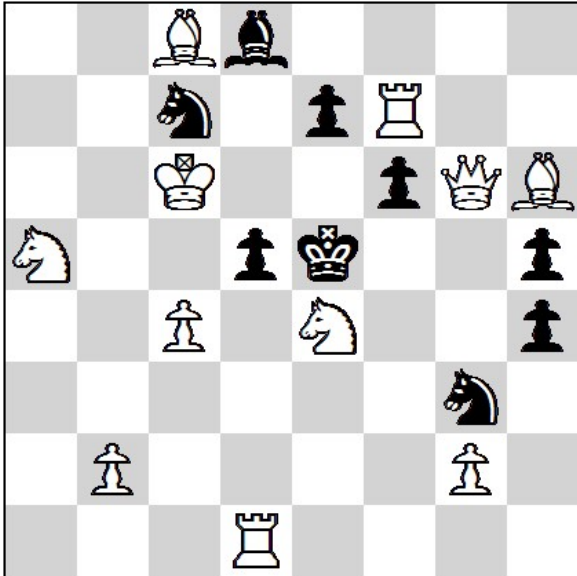


Brazilian Christmas Solving Tournament 2021

18.12.2021 - Round 1. (90')

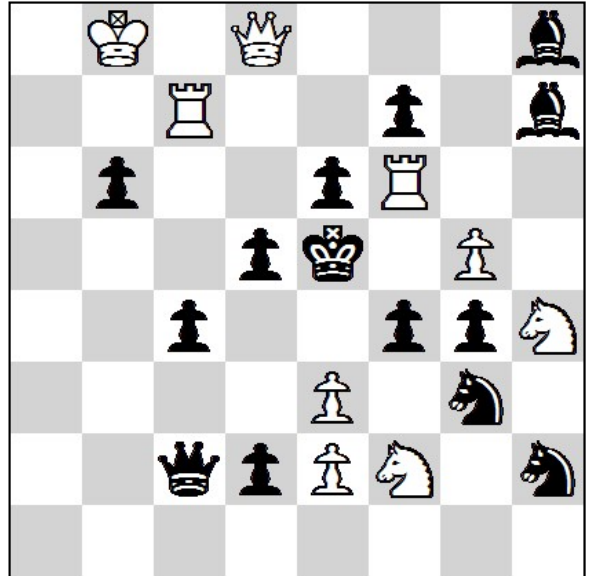
1.



#2

11 + 9

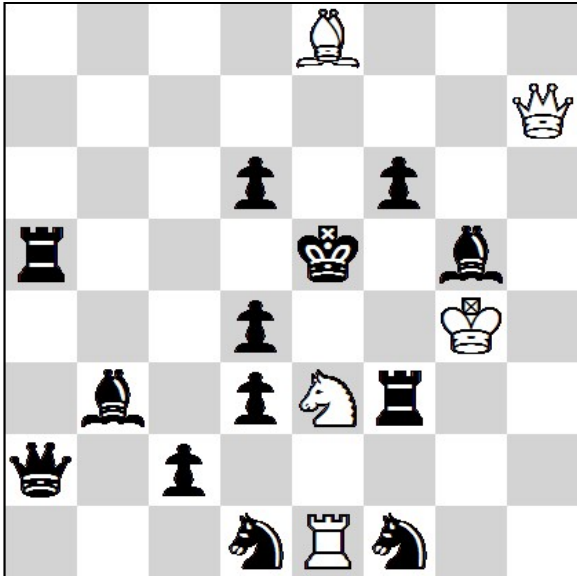
2.



#3

9 + 14

3.

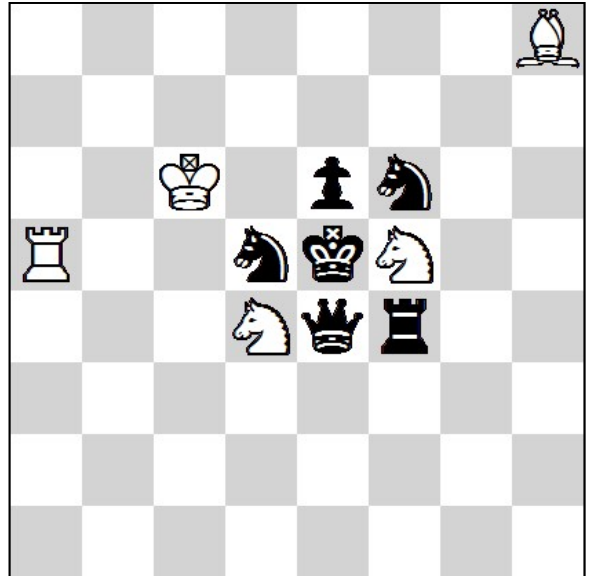


+

(#11)

5 + 13

4.

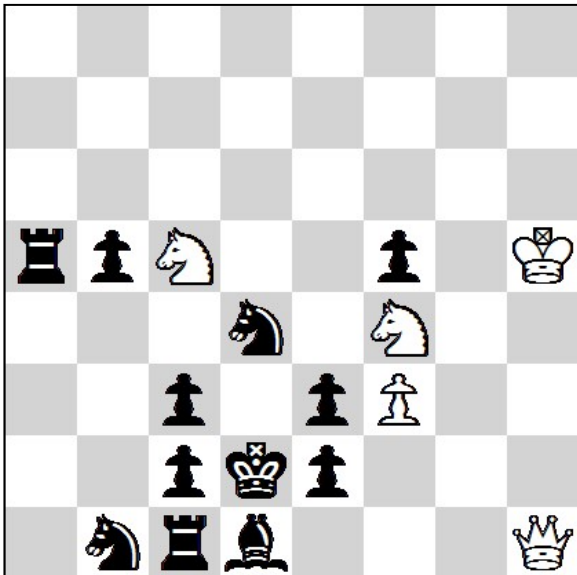


H#2

2111

5 + 6

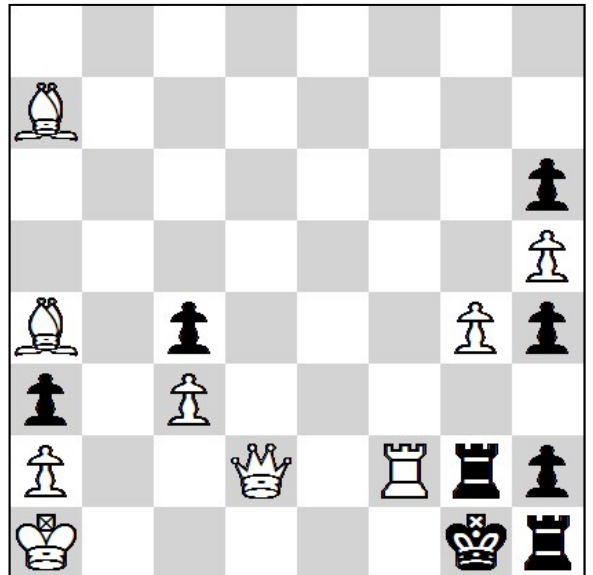
5.



#5

5 + 12

6.



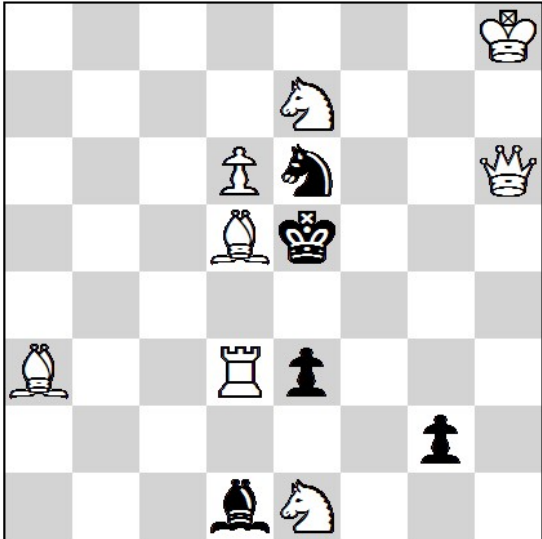
S#4

9 + 8

Brazilian Christmas Solving Tournament 2021

18.12.2021 - Round 2. (90')

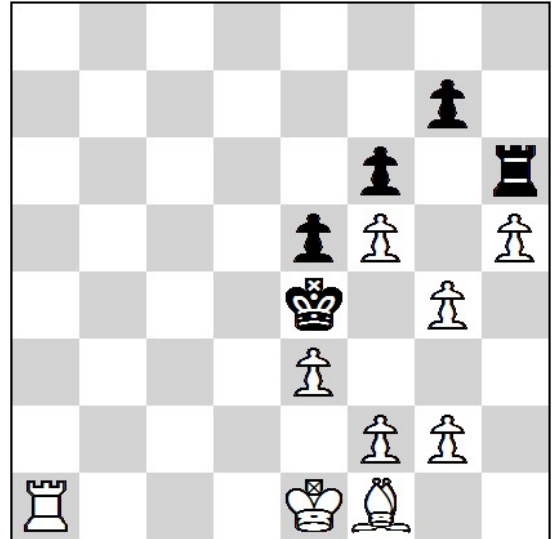
7.



#2

8 + 5

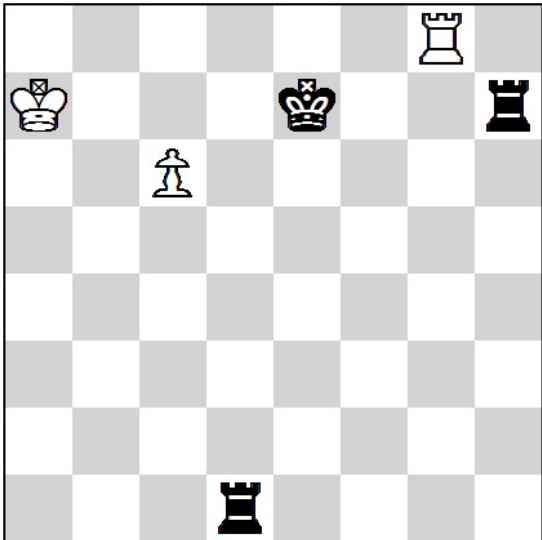
8.



#3

9 + 5

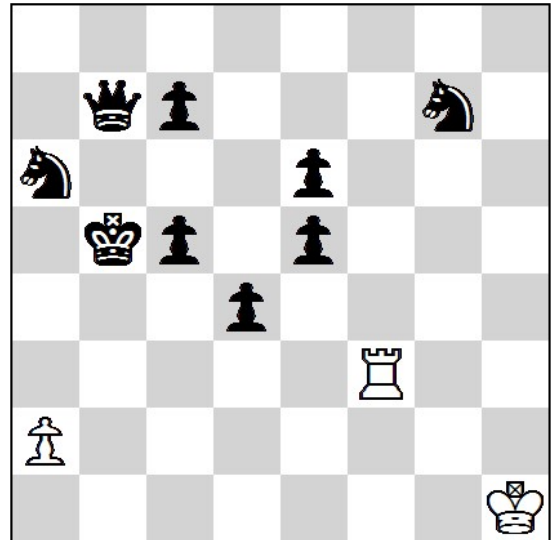
9.



=

3 + 3

10.

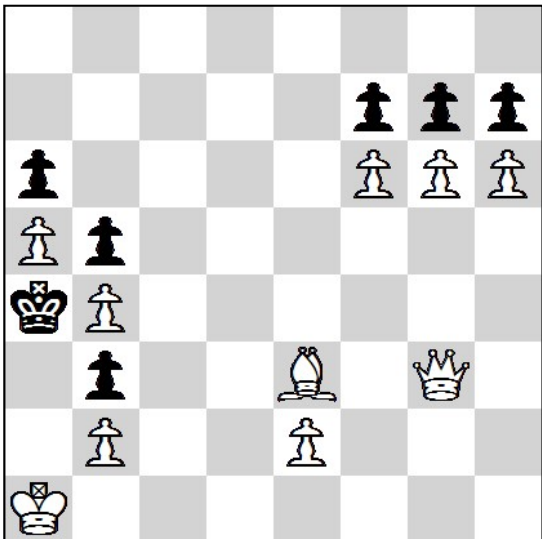


H#4

3 + 9

- a) diagram
- b) c7->h2
- c) a6->b2
- d) c5->h2

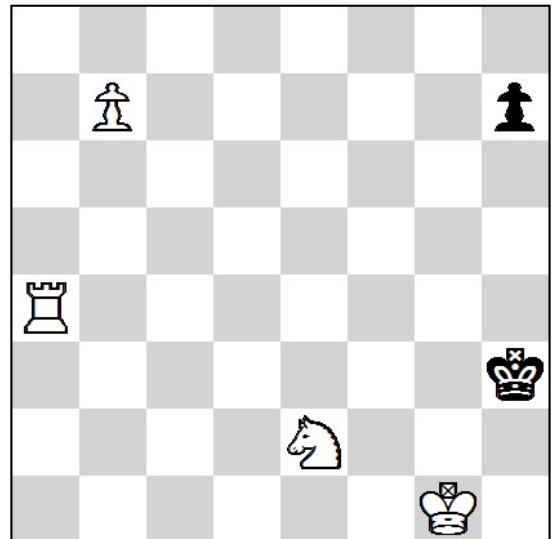
11.



#4

10 + 7

12.



S#5

4 + 2