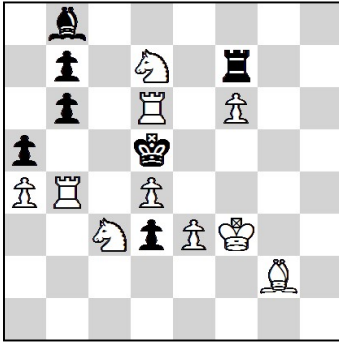


Open Fairy Solving Tournament 2021

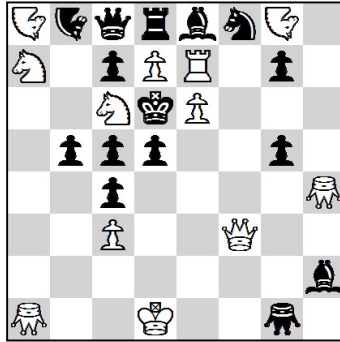
Greece, Rhodes 20.10.2021 - (150')

1.



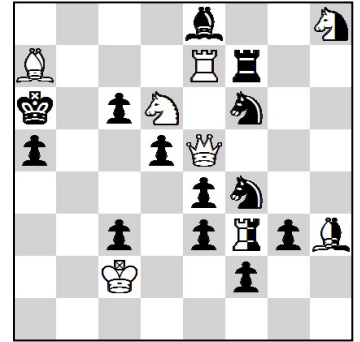
#2 Patrol chess 10 + 7

2.



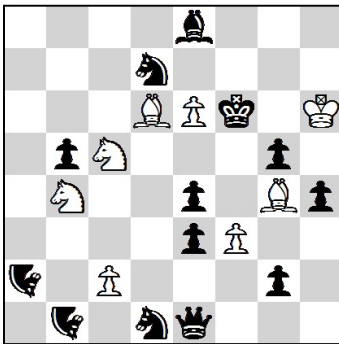
#2 Circe 12 + 15
Nightrider
Grasshopper

3.



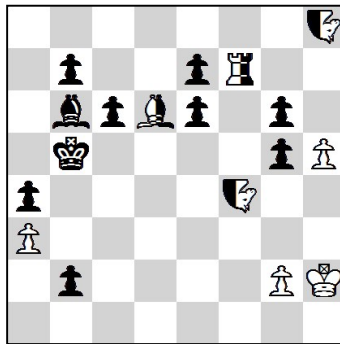
#3 Circe 5 + 13 + 3

4.



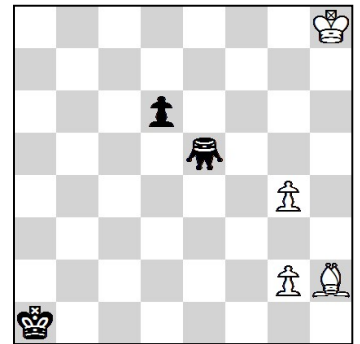
#5 Nightrider 8 + 13

5.



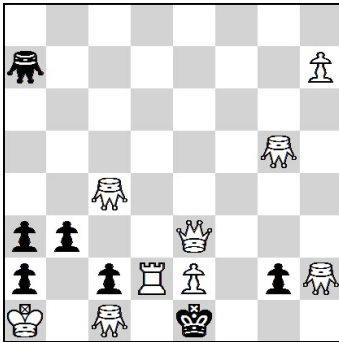
h#2 4 + 10 + 4
b) Kh2>f1
Take & Make
Nightrider
(2.5 / 5)

6.



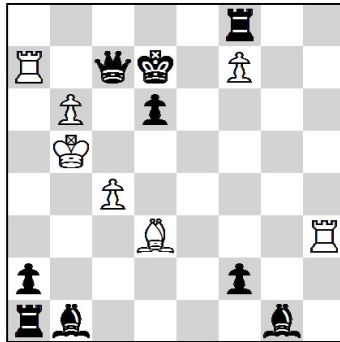
h#4,5 b) Ge5>a2 4 + 3
c) Pg2>a2
Take & Make
Grasshopper
(1.5 / 3.5 / 5)

7.



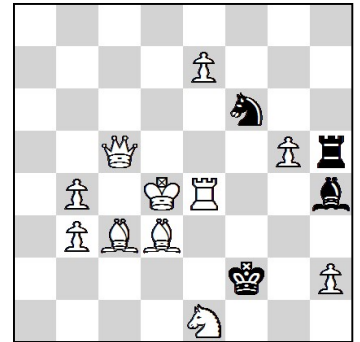
s#3 Grasshopper 9 + 7

8.



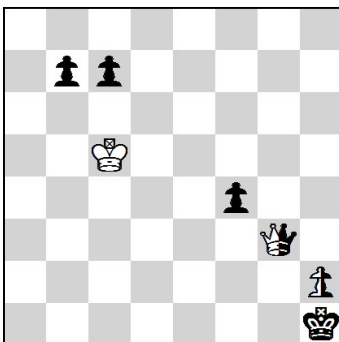
r#2 7 + 9

9.



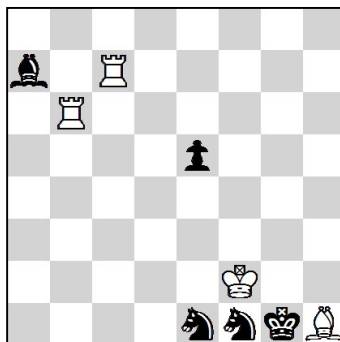
hs#3 3.1.1.1.1.1 11 + 4

10.



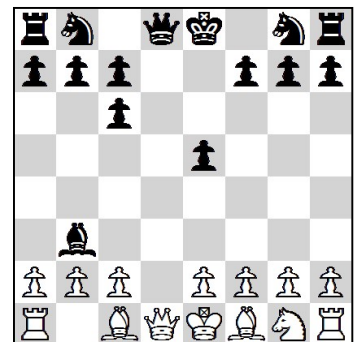
ser-h#7 2.1.1.1... 1 + 4 + 2
Circe

11.



h=4 b) Pe5>a2 4 + 5
Patrol chess

12.



PG6,0 2.1.1.1... 14 + 15