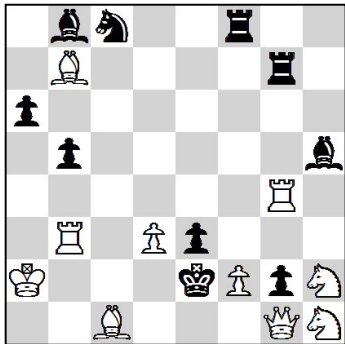


A



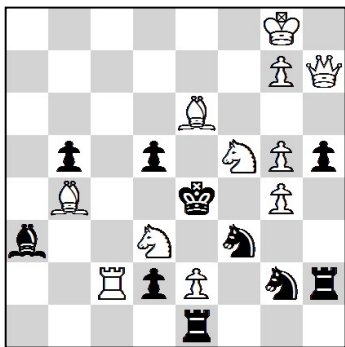
#2

10 + 10

Loustau, Jean-Marc  
1st Prize  
Schach-Aktiv, Jun 2011 (3813)

1. ♖d4! (5)

B



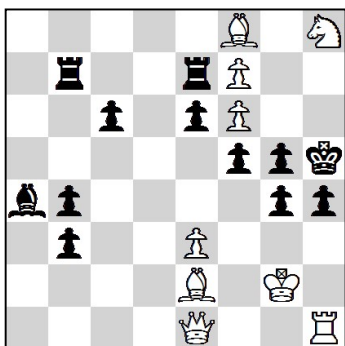
#3

11 + 10

Larin, Rudol'f Mihajlovich  
Lukashiov, Viktor Sergeevich  
1st Prize  
Кудесник, 2008 (116/4060)

1. ♙h6! > 2. ♖xd5+ (1)  
 ♗e5 2. ♗f2+ (1)  
 ♗d4 2. ♗g3+ (1)  
 ♗f4 2. ♗c5+ (1)  
 ♗e3 2. ♗d6+ (1)

C



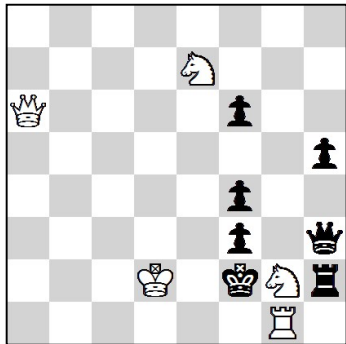
#4

9 + 12

Olzweski, Peter  
2nd Prize  
The Problemist, Jul 2002 (C9811, p. 415)

1. ♙g3! > 2. ♖xg4+ fxg4 3. ♖xh4+ (1.5)  
 e5 2. ♖f1 > 3. ♙xh4+ (1.5)  
 ♖b5 2. ♖d3 > 3. ♙xg4+ (1)  
 h3+ 3. ♖xh3+ (1)

**D**

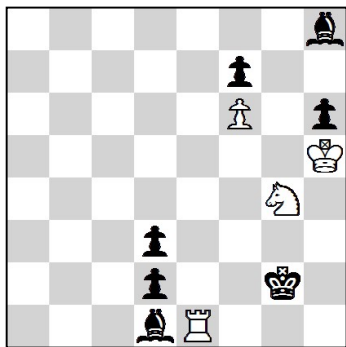


Hlinka, Michal Martin  
3rd HM  
Pat a Mat, Aug 1989 (925c)

1. ♖f1+! (0.5)  
 1... ♔g3 2. ♜e1+ ♔g4 3. ♜e6+ ♔g3 4. Sf5+ ♜xf5 5. ♜e1+ (1.5)  
 5... ♔g4 6. ♜h4+ ♜xh4 7. Se3++ ♜h3 8. ♜h1+ ♜g3 9. Sxf5+ (1.5)  
 9... ♔g2 10. ♜h4 f2 11. ♜xf4 f1 ♜ 12. Se3+ (1.5)

+ 5 + 7

**E**



Jonsson, Bernt Christer  
Tidskrift för Schack, 2000

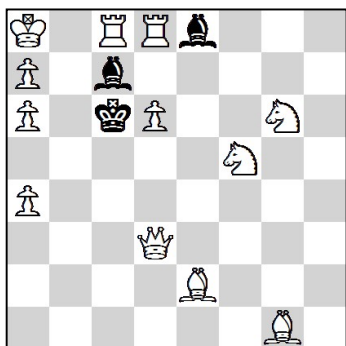
- (i) 1. de1 ♖ ♔h4 2. ♔h1 ♔h3 3. ♜g1 ♜f2‡ @  
 (ii) 1. ♜xf6 ♜f1 2. ♜e5 ♔h4 3. ♜h2 ♜e3‡ @  
 (iii) 1. ♜f3 ♔h4 2. ♜e4 ♜e2 3. ♔f3 ♜f2‡ @  
 (iv) 1. ♜xg4+ ♔xg4 2. ♔h2 ♔f3 3. ♔h3 ♜h1‡ @

|      |   |     |   |   |
|------|---|-----|---|---|
| @    | 1 | 2   | 3 | 4 |
| Pts. | 1 | 2.5 | 4 | 5 |

H#3 4 + 7

4111...

**F**



Mikan, Ilja  
8th Place  
1st Friendship Match/2nd s# theme, 1962-1964, 15 Jun 1963 (219)

1. ♘g7! > 2. ♜c2/♜c3+  
 ♜d7 2. ♜b5+ ♜xd6 3. ♜c5+ ♔d5 4. ♜c4+ ♔e4 5. ♜c6+ @  
 ♜xg6 2. ♜f3+ ♜e4 3. a5 ♜d5 4. ♜e4 ♜xe4 5. ♜b5+ @  
 ♜f7 2. ♜f3+ ♜d5 3. ♜e4 ♜xe4 4. ♜c3+ ♔d5 5. ♜c4+ @

|      |     |     |   |
|------|-----|-----|---|
| @    | 1   | 2   | 3 |
| Pts. | 1.5 | 3.5 | 5 |

S#5 12 + 3

10th Slovakian Home Solving Tournament 2021 (Slovakia, at Home 27.02.2021)

**Problems Difficulty (25 Solvers)**

| <b>ID</b> | <b>Tag</b> | <b>Difficulty</b> | <b>Average</b> | <b>5(Correct Solution)</b> | <b>0 &lt; Pts. &lt; 5</b> | <b>0 (Wrong Solution)</b> | <b>- (No Solution)</b> |
|-----------|------------|-------------------|----------------|----------------------------|---------------------------|---------------------------|------------------------|
| F         | S#5        | 840               | 0.80           | 1                          | 6                         | 4                         | 14                     |
| D         | +          | 644               | 1.78           | 7                          | 13                        | 1                         | 4                      |
| B         | #3         | 248               | 3.76           | 18                         | 1                         | 5                         | 1                      |
| C         | #4         | 244               | 3.78           | 16                         | 5                         | 1                         | 3                      |
| E         | H#3        | 236               | 3.82           | 11                         | 12                        | 0                         | 2                      |
| A         | #2         | 80                | 4.60           | 23                         | 0                         | 2                         | 0                      |

**Created by WFCC Solving Tournament Manager**