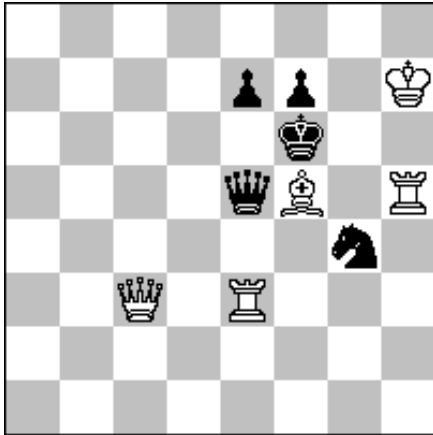


1)



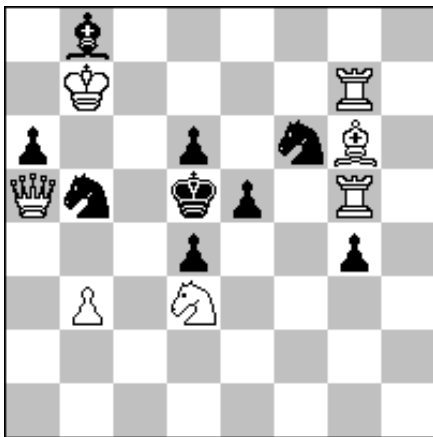
#2

(5+5)

David A. Mitchell
Good Companions 1918

1.Be6! zz (5)
1..S~~ 2.Qxe5#
1..Q~~ 2.Rf5#
1..Kxe6 2.Qc6#
1..fxe6 2.Rf3#

2)



#2

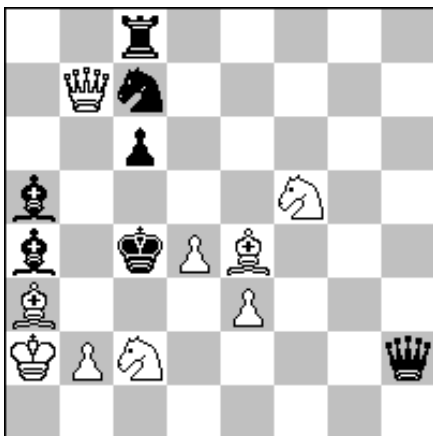
(7+9)

Alexander Zidek
4th Prize *Schach Aktiv* 1988

1.Qe1/Qb4/Qb6? Sc7/Ke6/Sh5!

1.Qd8! (>2.Rxe5#) (5)
1..Ke6 2.Bf7#
1..Sd7 2.Qg8#

3)



#2

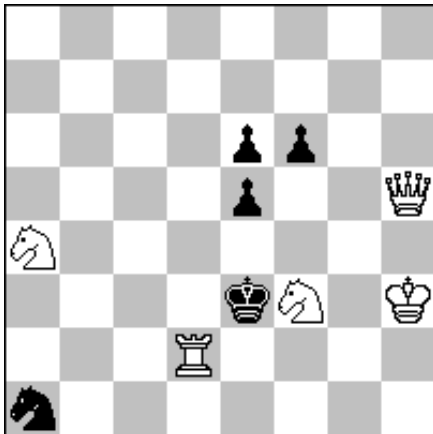
(9+7)

Venelin Alaikov
2nd Prize *Shahmatna mis'l* 1965

1.Be7/Bd6/Bc5? Sb5/Qxc2/Bxc2!

1.Bf8! (>2.Sa3#) (5)
1..Qd6 2.Sxd6#
1..Qxc2 2.Sd6#
1..Bxc2 2.Qxc6#
1..Bb3+ 2.Qxb3#
1..Bb4 2.Qxb4#
1..Sb5 2.Qf7#

4)



#3

(5+5)

C.A.L.Bull
Morning Post 1887

1.Sd4!

1..~ 2.Qh6+ @ Ke4 3.Sc3#

1..Kxd2 2.Qe2+ @ Kc1 3.Qe1#

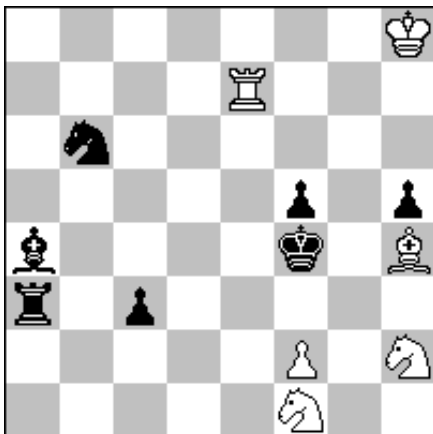
1..exd4 2.Re2+ @ Kf4 3.Qg4#

2..Kd3 3.Qb5#

1..f5 2.Qe2+ @ Kf4 3.Sxe6#

((@ 1.2 → 2.4 → 3.7 → 5))

5)



#3

(6+7)

Bruno Ebner
2nd Prize *Die Schwalbe* 1973

1.Se3/Sg3? Lc6/Ld1!

1. Re6!

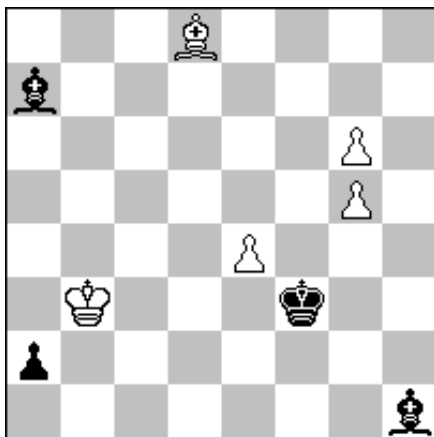
1..~ 2.Bg3+ @ Kg5 3.f4#

1..Sd5 2.Se3 @

1..c2 2.Sg3 @

((@ 1.6 → 3.3 → 5))

6)



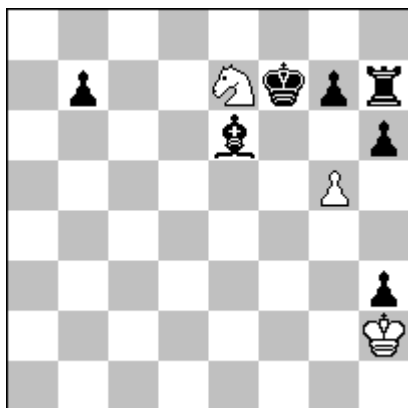
Win (+)

(5+4)

Paul Byway
The Problemist 1998

**1.Bf6 (1) a1Q 2.Bxa1 Bd4 3.Bxd4 (1) Kxe4
4.Kc4 (1) Bf3 5.g7 Bh5 6.g8B! (2)**

7)



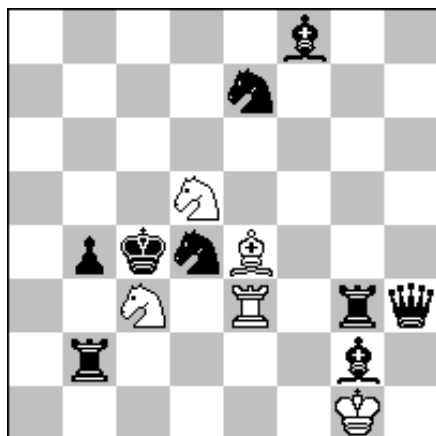
Win (+)

(3+7)

Aleksandr Maksimovskich
1st Prize *Red Miner* 1983

**1.g6+ (1) Kxe7 2.gxh7 (1) Kf8 3.h8D+ Bg8
4.Kxh3 (1) b5 5.Kg4 b4 6.Kc5! (1) Kc7 7.Ke4 b3
8.Kd3 b2 9.Kc2 (1)**

8)



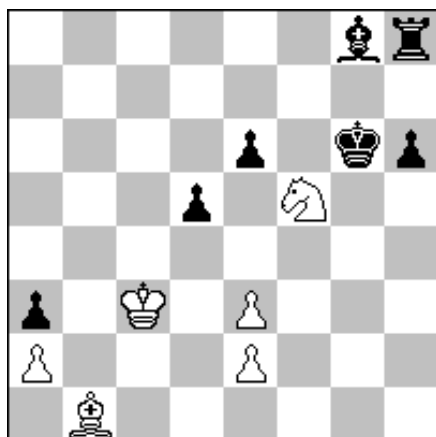
h#2 2 solutions (5+9)

Juri Gorbatenko
1st HM *Shakhmatnaya Poeziya* 2001

1.bxc3 Bf3 2.Rb5 Rxc3#
1.Sxd5 Rf3 2.Bc5 Bxd5#

(2 x 2.5)

9)



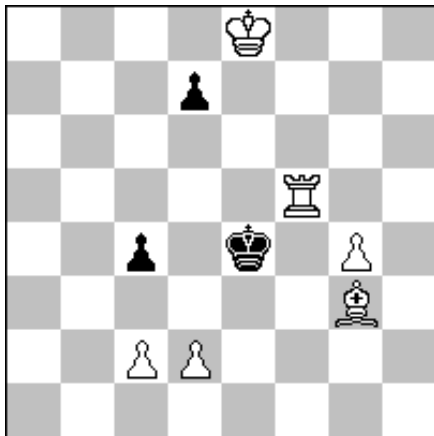
h#3 2 solutions (6+7)

C.J.A.Jones
Rochade Europa 2012

1.e5 Kd3 2.Kxf5 Kc2 3.Ke4 Kd2#
1.exf5 e4 2.Kg7 exf5 3.Kh7 f6#

(2 x 2.5)

10)



#4

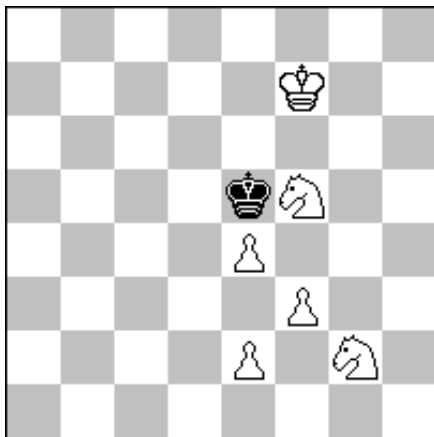
(6+3)

Aleksandr Galitzky
Shahmatny zhurnal 1901

1.Bd6! zz
1..c3 2.Rf4+ Kd5 3.Kxd7 cxd2 4.c4#
1..Kd4 2.Bc5+ Ke4 3.Kxd7 c3 4.d3#

(2 x 2.5)

11)



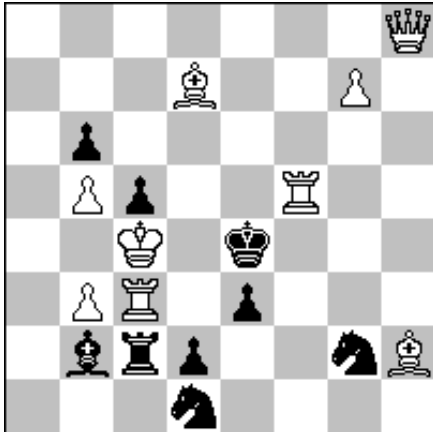
#5

(6+1)

Johann Hollik
Deutsche Schachzeitung 1985

1.Sge3! zz
1..Kf4 2.Sg4 Kg5 3.e3 Kh5 4.Sf6+ Kg5 5.f4# (5)

12)



s#2

(9+9)

Vladimir Rychkov
4th Prize *Kolokol Chernobylya* 1992

1..Sxc3 2.Qa8+ Sd5#
1..Bxc3 2.Qe8+ Be5#

1.Qh6?
1..Sxc3 2.Qc6+ Sd5#
1..Bxc3 2.Qe6+ Be5#
1..Sf4!

1.Qh3!

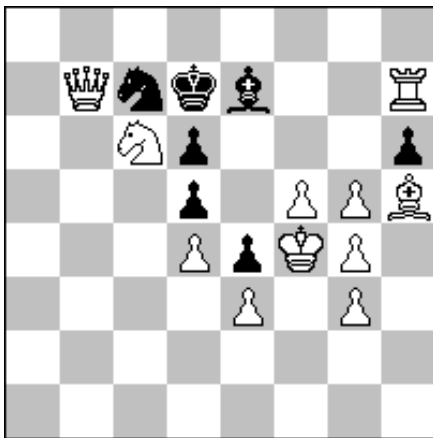
1..~ 2.Qxe3+ @ Sxe3#

1..Sxc3 2.Bc6+ @ Sd5#

1..Bxc3 2.Re5+ @ Bxe5#

(@ 1.6 → 3.3 → 5)

13)



s#4

(11+7)

Wolfgang Weber
comm. *Schweizerische Schachzeitung* 1978

1..hxg5#

1.Rf7! Ke8 2.Rf6+ Kd7 3.Sb8+ Kd8 4.Rxd6+ Bxd6#

(5)

Problems Difficulty (13 Solvers)

ID	Tag	Difficulty	Average	5(Correct Solution)	0 < Pts. < 5	0 (Wrong Solution)	- (No Solution)
9	H#3	924	0.38	1	0	11	1
13	S#4	924	0.38	1	0	11	1
3	#2	846	0.77	2	0	11	0
8	H#2	808	0.96	2	1	9	1
6	+	800	1.00	0	9	3	1
4	#3	790	1.05	2	2	8	1
5	#3	668	1.66	4	1	7	1
10	#4	616	1.92	5	0	7	1
11	#5	616	1.92	5	0	7	1
1	#2	538	2.31	6	0	7	0
2	#2	538	2.31	6	0	7	0
7	+	446	2.77	2	9	1	1
12	S#2	388	3.06	6	4	2	1

Created by WFCC Solving Tournament Manager