

1

**VI. Zabunov (Varna) «Chess Thought»
1973 №5**

checkmate in 2 moves

1. ♖f5 [5.0]

2

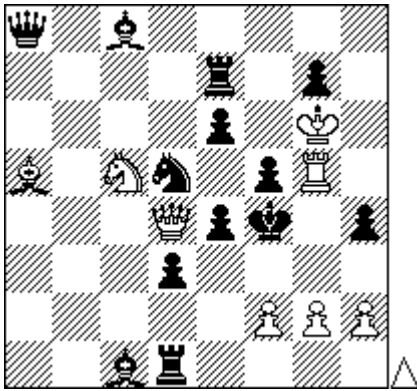
I. Kisis «64» 1979 №41

checkmate in 2 moves

1. ♖d3 ♜xd3 2. ♘xd3# [5.0]

3

**P. A. Petkov Olimpiyski k-rs Skopje
1972 2 prize**



#3

1. h3 ugroza 2. ♜g4 [1.0]

1... ♘e3 2. ♔d2 [1.0]

1... ♘f6 2. ♘xe6 [1.0]

1... ♘c3 2. ♜h5 [0.5]

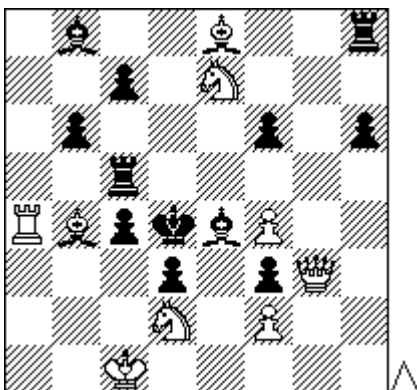
1... ♘c7 2. ♜h5 [0.5]

1... ♘b4 2. ♜h5 [0.5]

1... ♘b6 2. ♜h5 [0.5]

4

**S. Pugachev 12 All-Union team
competitions «Chess in the USSR»
1986 №6**



#3

1. ♖g4 (ugroza 2. ♖d7+) [0.8]

1... c6 2. ♔a3 [0.7]

1... ♔c6 2. ♖e6 [0.7]

1... ♜c6 2. f5 [0.7]

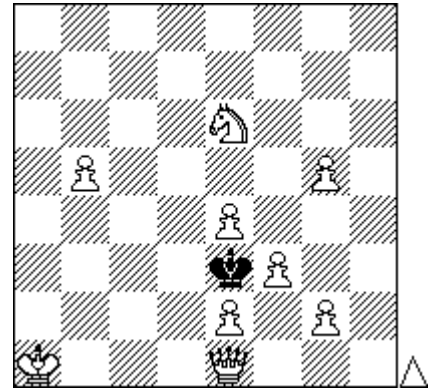
1... f5 2. ♖g7 [0.7]

1... ♔f5 2. ♖xf3 [0.7]

1... ♜f5 2. ♔c3 [0.7]

5

**A.Stepochkin (Tula) «64- Chess review»
2001 №7**



#4

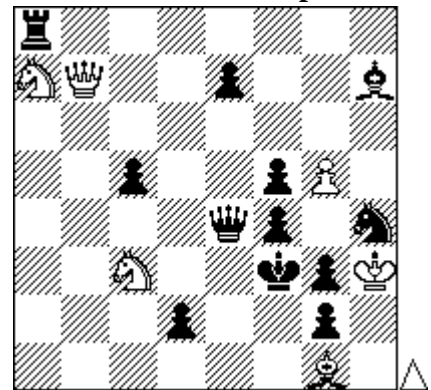
(9 + 1)

1. ♘d8 ♖f4 2. ♘f7 ♖e3 3. ♖b2 [2.5]

1... ♖d4 2. ♖c1 ♖e5 3. b6 [2.5]

6

G.-P. Rem "Die Schwalbe" 1 prize 1993



#7

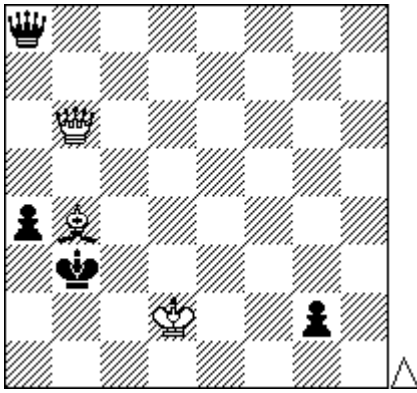
1. ♖b3 ♖e1 (♖e2) 2. ♖f7 ♔g6 3. ♖d5 ♖e4

4. ♖b3 ♖e1 (♖e2) 5. ♖b7 ♖e4 6. ♘c6 [5.0]

7 G.Umnov, A. Frolovskiy (Tula)

XII All-Union team competitions

«Chess in USSR» 1986 №6

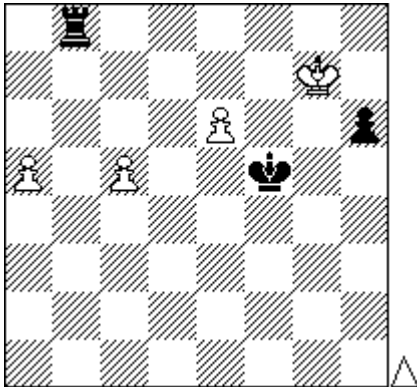


+

1. ♔f8 [2.0] ♕a2 2. ♚e6 ♖b2 3. ♚f6 ♕a2 4. ♚f7 ♖b2 5. ♚g7 ♕a2 6. ♚g8 [1.0] ♖b2 7. ♔g7[1.0] ♕a3 8. ♚xa8 ♔1=♚ 9. ♚f8 ♖b3 10. ♚g8 ♖b4 11. ♔f8 [1.0]

8

E. Kolesnikov "Chess Bulletin" 1993 1 prize "64- CR" 2002 №2



=

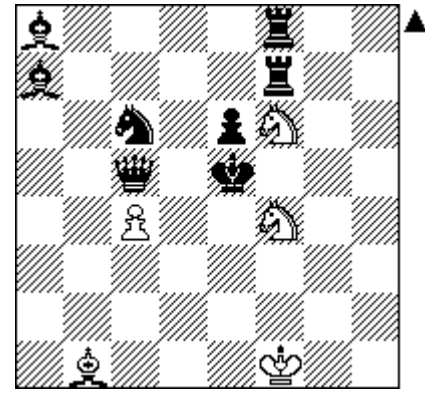
1. ♕f7 ♖h8 2. e7 ♖h7 3. ♕f8 ♕f6 4. e8=♗ [1.0] ♕e5 5. c6 [1.0] ♖h8 6. ♕e7[1.0] ♖xe8 7. ♕d7 [1.0]

[7. ♕xe8 ♕d6 8. ♕d8 ♕xc6 9. ♕c8 h5 10. ♕b8 ♕b5-+]

- 7... ♕d5 8. c7 ♖h8 9. c8=♚ ♖xc8 10. ♕xc8 ♕c6 11. ♕b8 ♕b5 12. ♕b7 ♕xa5 13. ♕c6[1.0] =

9

S. Pushkin «Chess»(Riga) 1964 №8

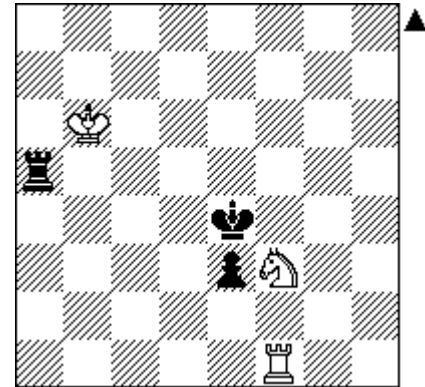


h#2 2 solution

1. ♗d4 ♗e8 2. ♔f3 ♗g6# [2.5]
1. ♚d6 ♗e2 2. ♔f2 ♗g4# [2.5]

10

I. Krieheli "Schwalbe" 1968 2 prize «Chess» (Riga) 1972 №3



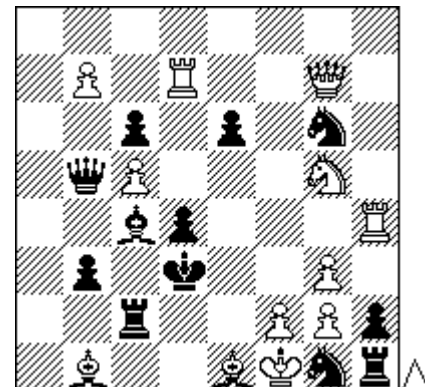
h#3 2 solution

1. ♖f5 ♗g5 2. ♕d5 ♖b5 3. ♖e5 4. ♖d1# [2.5]

1. ♖h5 ♕c6 2. ♕f5 ♕d5 3. ♖g5 4. ♗e5# [2.5]

11

A. Skuja XIII Latvian Championship



s#2

1. ♖h3 (ugroza 2. g4+) [1.0]

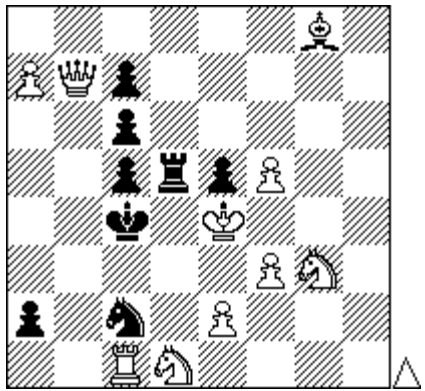
- 1... ♔d5 2. ♚xd4 [1.0]

- 1... ♗e5 2. ♖xd4 [1.0]

- 1... ♘f4 2. gxf4 [1.0]
- 1... ♘h4 2. gxh4 [1.0]

12

P.A.Petkov «Revista de Sah», 1970 1



s#3

- 1. a8=♖
- 1... a1=♙ 2. ♔b8 ∞ 3. ♙xd5 [1.25]
- 1... a1=♘ 2. ♘f1 ♘b3 3. ♘d2 [1.25]
- 1... a1=♚ 2. ♖xc2 ♚c3 3. e3 [1.25]
- 1... a1=♗ 2. ♗a4 ♗xa4 3. ♚b3 [1.25]

Open of A. Suetin Memorial 2021 (Russia, Tula 03.01.2021)

Problems Difficulty (18 Solvers)

ID	Tag	Difficulty	Average	5(Correct Solution)	0 < Pts. < 5	0 (Wrong Solution)	- (No Solution)
8	=	934	0.33	1	1	9	7
5	#4	888	0.56	2	0	5	11
6	#7	888	0.56	2	0	4	12
10	H#3	888	0.56	1	2	1	14
12	S#3	848	0.76	2	1	2	13
7	+	788	1.06	3	2	10	3
11	S#2	778	1.11	4	0	4	10
4	#3	688	1.56	4	3	6	5
3	#3	634	1.83	6	2	7	3
9	H#2	556	2.22	8	0	1	9
2	#2	500	2.50	9	0	9	0
1	#2	166	4.17	15	0	3	0

Created by WFCC Solving Tournament Manager