

1. J.Gartong "Jaarboek v. d.NBVP" 1952 -

#2

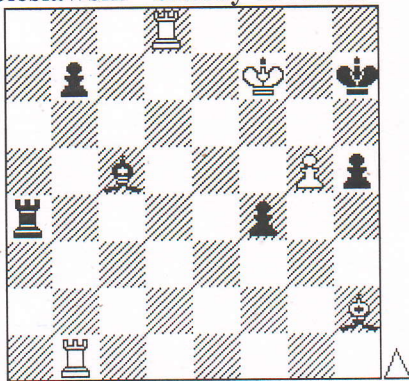
1. ♖e2 [5.0]

2. dr.Cor Goldschmeding Schach 1975 №2

#2

1. ♘ec5 [5.0]

3. Z. Boleslawski Szachy 1975 №3



#3

(5 + 6)

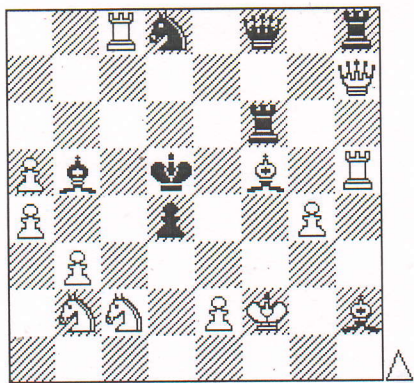
1. ♖b6 ♔f8 2. ♖h6 [1.25]

1... ♔xb6 2. ♖d6 [1.25]

1... ♔d6 2. ♖dxd6 [1.25]

1... ♖a6 2. g6 [1.25]

4. V. Gebelt Competition of the Riga Council of the «Spartak society» 1953, 1 prize



#3

(13 + 7)

1. ♘c4 threat 2. e4 [1.5] dxe3 3. ♘4xe3#

1... ♖c5 2. ♘b6 [0.5]

1... ♔c6 2. ♘b6 [0.5]

1... ♖e6 2. ♘b4 [0.5]

1... ♖xf5 2. ♖xf5 [0.5]

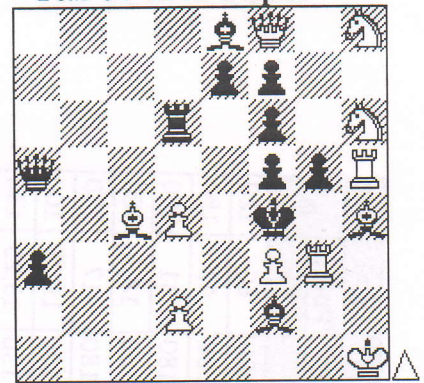
1... ♘c6 2. ♘b6 [0.5]

1... ♖c6 2. ♖d7 [0.5]

1... ♖e7 2. ♖xe7 [0.5]

5.

П.Банко Конкурс журнала "Тем-64" 1972 1 приз



#4

(11 + 11)

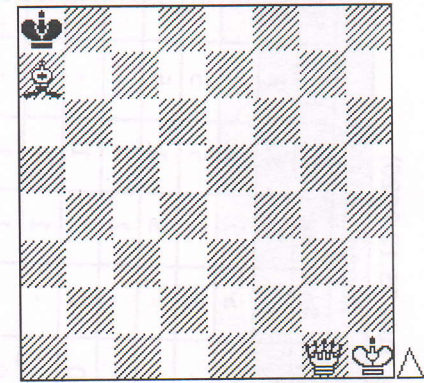
1. ♔g2 threat 2. ♘g6 fxg6 3. ♔xg5 [2.0]

1... ♖xd4 2. ♔xg5 fxg5 3. ♖g4 [1.5]

1... ♖xd2 2. ♖g4 fxg4 3. ♘g6 [1.5]

6.

Ю.Селявкин «64» 1975 №40



#5

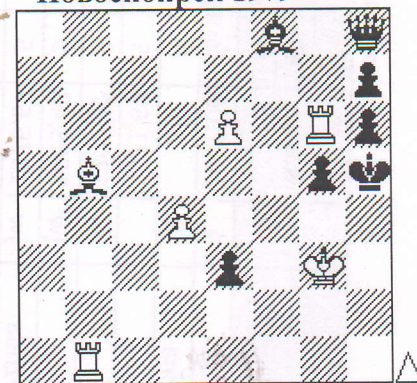
(3 + 1)

1. ♖d4 ♔b7 2. ♖d7 ♔a6 3. ♔c5 ♔a5 4. ♖b7 [2.5]

2... ♔a8 3. ♔b6 ♔b8 4. ♖c7 [2.5]

7.

Д.Ф.Петров «64», 1979 №41 Вечерний Новосибирск 1979



+

(6 + 7)

1. e7 ♔xe7 2. ♔d3 [2.0] ♖xd4 3. ♖h1 ♖h4 4.

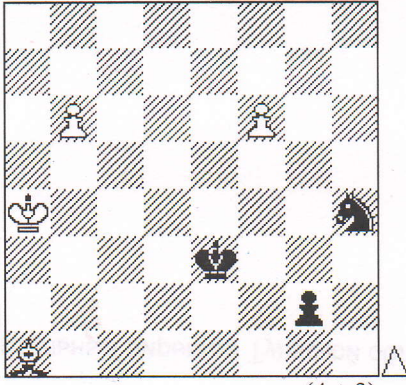
♖xh4 gxh4 5. ♔f4 [1.0] ♔g5 6. ♔f3 hxg6

[6... h3 7. ♖g8 ♔h4 8. ♖a8 e2 9. ♖a4 ♔h5

10. ♔xe2 + -] 7. ♔e2 [2.0]

8.

С. Толстой ШАХ 1974 «64», 1976 №33

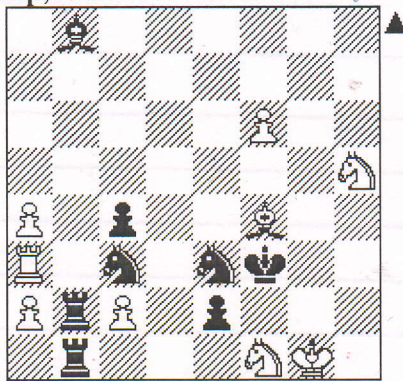


= (4+3)

1. f7 [1.0] ♖g6 2. b7 g1=♚ 3. ♔d4 [2.0] ♕xd4
 4. f8=♚ [1.0] ♖xf8 5. b8=♚ ♚a1 6. ♖b5 ♚b1
 7. ♖c6 [1.0] ♚xb8 пат
 [7... ♚e4 8. ♖c7 ♖e6 9. ♖b6 ♚b1 10.
 ♖a7 ♚a2 11. ♖b6 ♚b3 12. ♖a7 ♚a4
 13. ♖b6 ♚b4 14. ♖a7 ♚a5 15. ♖b7
 ♖c5 16. ♖c6=]

9.

К. Видерт, Стелла Полярис 1970
 1 пр, Шахматы 1972 №17

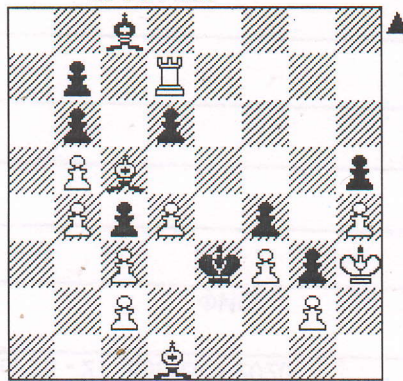


h#2 2 solution (9+8)

1. ♖g4 ♔e3 2. ♖d1 ♖d2# [2.5]
 1. ♖e4 c3 2. ♖d1 ♖h2# [2.5]

10

Ф. Абдурахманович 1962 «64-ШО»
 1980 №19

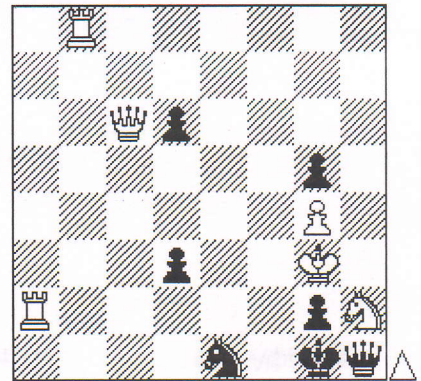


h#4 (12+9)

1. ♖d2 ♔xb6 2. ♖xc3 ♔c7 3. ♖xd4 ♔xd6
 4. ♖e3 ♔c5# [5.0]

11.

А. Фельдман 1987 «Baltic chess», 1992 №6

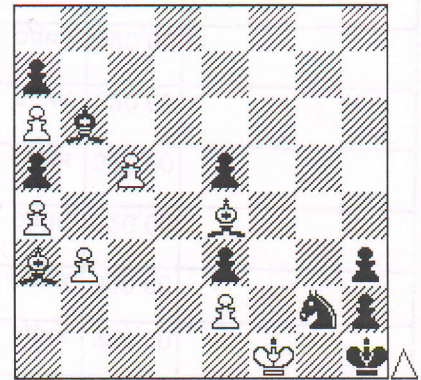


s#2 (6+6)

1. ♖b1 (1. ♖a1 d5!) 1... d5 2. ♖xg2 [2.5]
 1... d2 2. ♚xg2 [2.5]

12

Я. Русек 1972 «64», 1976 №33



s#5 (8+9)

1. ♔c1! zugzwang
 1... ♔xc5 2. ♔d2 ♔b4 3. ♔c3 ♔~
 4. ♔e1 ~ 5. ♔xg2 @
 1... ♔c7 2. ♔b2 ♔~ 3. ♔c3 ~ 4. ♔e1~
 5. ♔xg2 @
 1... ♔d8 2. ♔b2 ♔~ 3. ♔c3 ~ 4. ♔e1 ~
 5. ♔xg2 @

@ [2.0], @@ [3.0] @@@ [5.0]

Open of Tula Solving Cup (Russia, Tula 25.12.2020)

Problems Difficulty (14 Solvers)

| ID | Tag | Difficulty | Average | 5(Correct Solution) | 0 < Pts. < 5 | 0 (Wrong Solution) | - (No Solution) |
|-----------|------------|-------------------|----------------|----------------------------|---------------------------|---------------------------|------------------------|
| 5 | #4 | 928 | 0.36 | 1 | 0 | 4 | 9 |
| 12 | S#5 | 928 | 0.36 | 1 | 0 | 0 | 13 |
| 4 | #3 | 908 | 0.46 | 1 | 1 | 8 | 4 |
| 6 | #5 | 858 | 0.71 | 2 | 0 | 3 | 9 |
| 10 | H#4 | 858 | 0.71 | 2 | 0 | 0 | 12 |
| 9 | H#2 | 786 | 1.07 | 3 | 0 | 1 | 10 |
| 11 | S#2 | 786 | 1.07 | 3 | 0 | 0 | 11 |
| 8 | = | 772 | 1.14 | 2 | 6 | 5 | 1 |
| 7 | + | 742 | 1.29 | 2 | 6 | 6 | 0 |
| 3 | #3 | 590 | 2.05 | 5 | 3 | 6 | 0 |
| 2 | #2 | 286 | 3.57 | 10 | 0 | 4 | 0 |
| 1 | #2 | 142 | 4.29 | 12 | 0 | 2 | 0 |

Created by WFCC Solving Tournament Manager