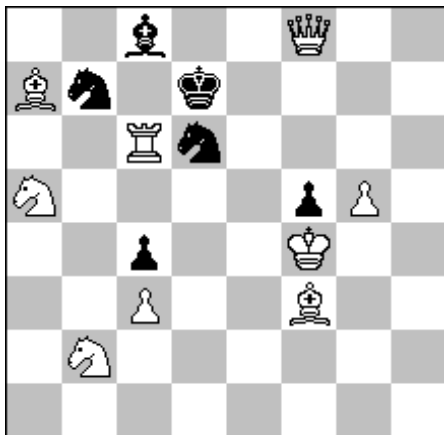


7.RIEŠITEL'SKÝ TURNAJ IN SITU - 21.11.2020

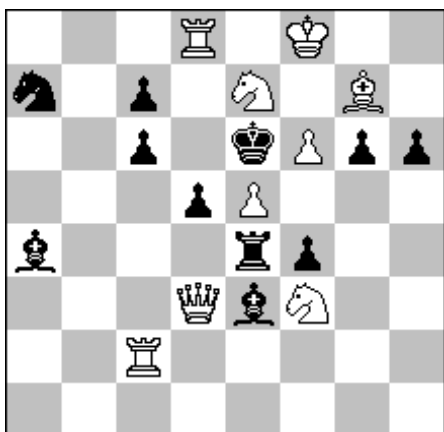
A



#2

9-6

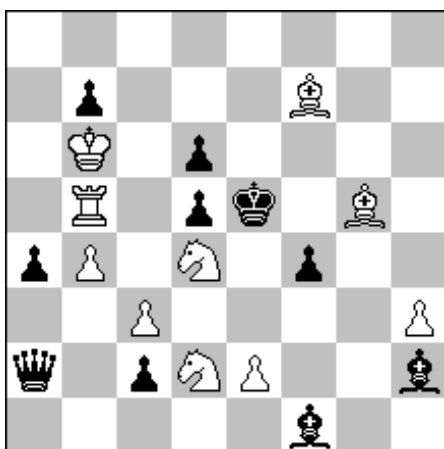
B



#3

9-11

C



#4

10-10

I.Borisenka Šachmaty 2009

1. ♖b6 (5)

Ljubaševskij-Makaronez PaM 2012

1.f7 (2. ♘d4)

1... ♖c2,g5, ♘b5

2. ♕e8, ♖h2, ♖c6

(varianty 1 - 2 - 3 - 4)

(body 1 - 2 5 - 4 - 5)

C.Gamnitzer Schach 2011

1. ♕a7 (2. ♖b7 ♘h3 3. ♖e7) (1.5)

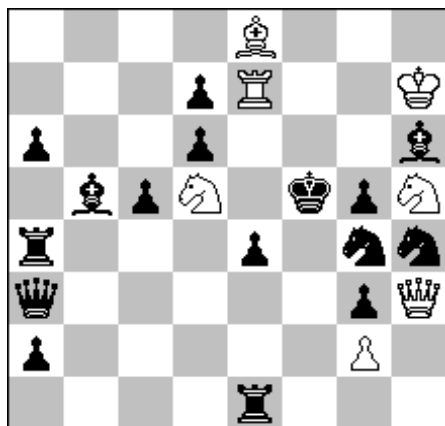
1.. ♘g1 2.e3 ♘/fxe3/f3 3. ♘2f3 (1.5 = 3x0,5)

2.. ♘h2 3. ♘4f3 (0.5)

1..b6 2.e4 fe e.p. 3. ♘2f3 (1.5)

7.RIEŠITEL'SKÝ TURNAJ IN SITU - 21.11.2020

D



#7

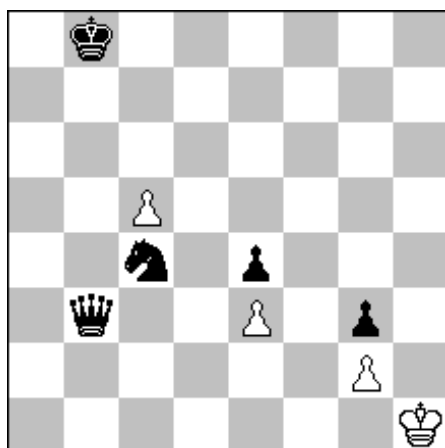
7-16

M.Marandjuk 2.c.Ogni Slavutiche 1996

1. ♖hf6 e3 2. ♗h5 ♘e2 3. ♘e8 c4 4. ♘ef6 c3
5. ♘e8 ♗b5 6. ♘h5 (5)

* stačí aj 1. ♘f6 a 4. ♘f6

E



h#6

2.1.1.1....

4-5

M.Babič cena Best Problems 2005

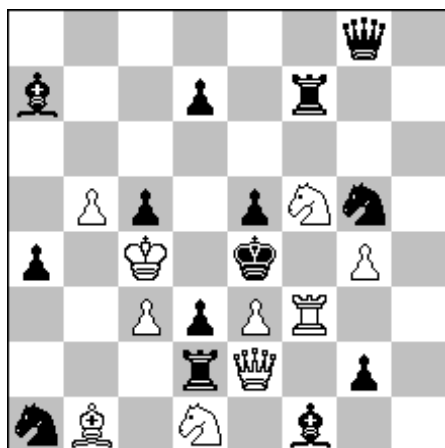
1. ♘d6 cd 2. ♗f7 d7 3. ♗f3 gf 4. ♖c7 fe

5. ♖d6 d8 ♗ 6. ♖e5 ♗e7 (2,5)

1. ♘b6 cb 2. ♖c8 b7 3. ♖d7 b8 ♗ 4. ♖e6 ♗g3

5. ♖f5 ♗g7 6. ♗e6 g4 (2,5)

F



s#3

10-14

Z.Janevski 1.č.u.. Mat Plus 2008

1. ♖g3 (2. ♗d3 ♖d3 3. ♗d3) (1)

1... ♘c2 2. ♗d3 ♖d3 3. ♘d6 (1)

1... ♗b8 2. ♘d6 ♗d6 3. ♘f2 (1)

1... ♖e2 2. ♘f2 ♖f2 3. ♗d3 (1)

1... ♖d~ 2. ♗f3 ♘f3 3. ♗d3 (1)

Problems Difficulty (30 Solvers)

ID	Tag	Difficulty	Average	5(Correct Solution)	0 < Pts. < 5	0 (Wrong Solution)	- (No Solution)
D	#7	666	1.67	10	0	5	15
E	H#6	634	1.83	4	14	0	12
C	#4	604	1.98	2	13	6	9
F	S#3	226	3.87	16	9	0	5
A	#2	166	4.17	25	0	5	0
B	#3	54	4.73	26	3	0	1

Created by WFCC Solving Tournament Manager