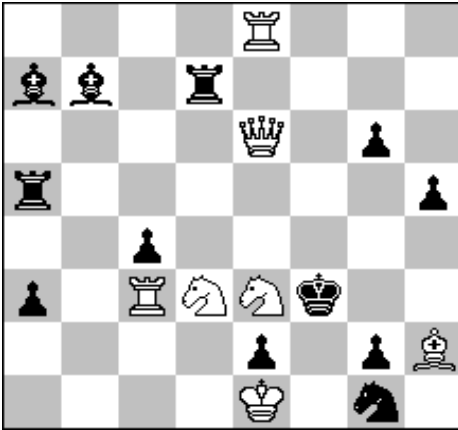


28. medzinárodné majstrovstvá Slovenska

Bratislava 2020

A



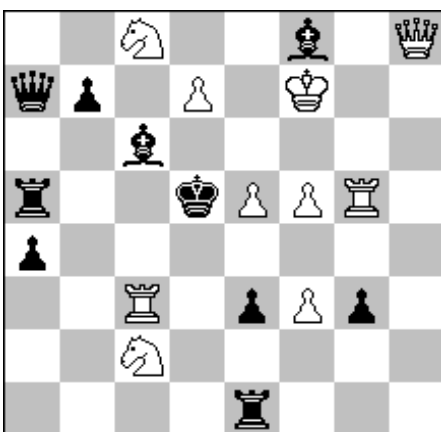
V.Čepižnyj 2.cena šachm. V SSSR 1979

1. ♘d5! (5)

#2

7-12

B



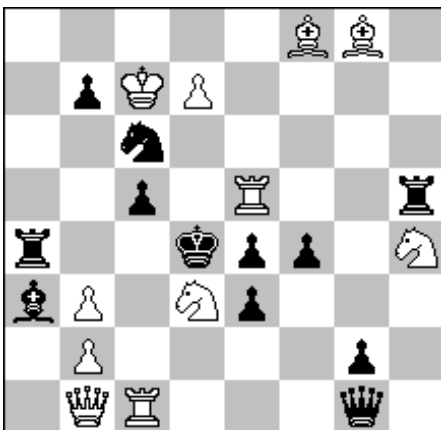
S.Dittrich 1.cena Urania 80

1. ♖h4! (5)

#2

10-10

C



H.Knuppert 2.cena BCF 1979

1. ♘b4! (5)

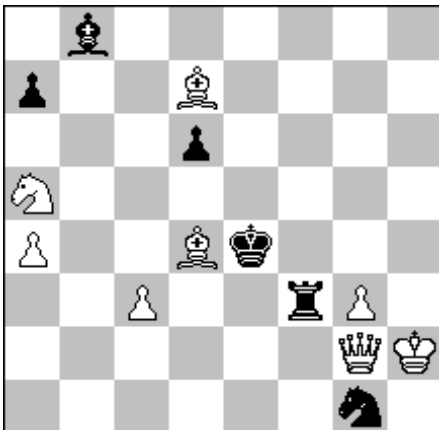
#2

11-12

28. medzinárodné majstrovstvá Slovenska

Bratislava 2020

D



Č.Kainer Lidové noviny 1910

1. ♘c4 (2. ♘e3)

1... ♖e2, ♜d3,d5

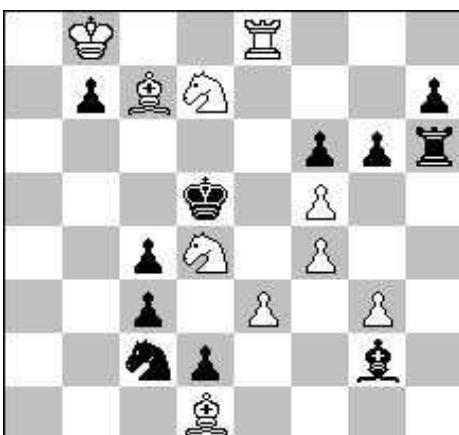
2. ♚f3, ♙f5, ♚c2

1 variant = 1 bod 2 varianty = 2,5 bodu
3 varianty = 4 body 4 varianty = 5 bodov

#3

8-6

E



Z.Labai Europe-Echecs 1974

1. ♖e6! (2. ♙c2) (1)

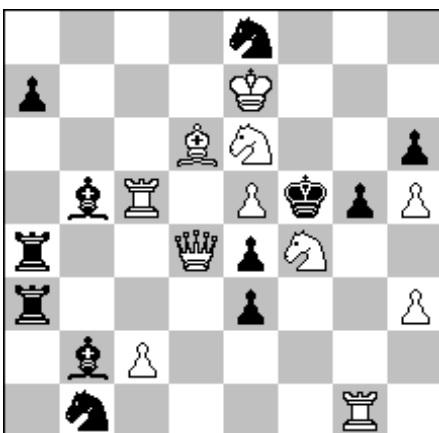
1... ♗c~, ♗e3, ♗d4, ♗b4 (1+1+1+1)

2. ♙d6, ♖d6,e4, ♘f6

#3

10-11

F



E.Vissermann 1.cena Probleemblad 1960

1. ♘g2 (2. ♘g7) (1)

1... ♙d4, ♖c3, ♖d4, ♙c4 (1+1+1+1)

2. c4, ♚c4,c3, ♚c3

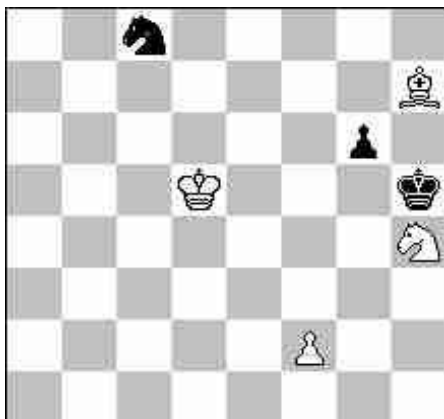
#3

11-12

28. medzinárodné majstrovstvá Slovenska

Bratislava 2020

G

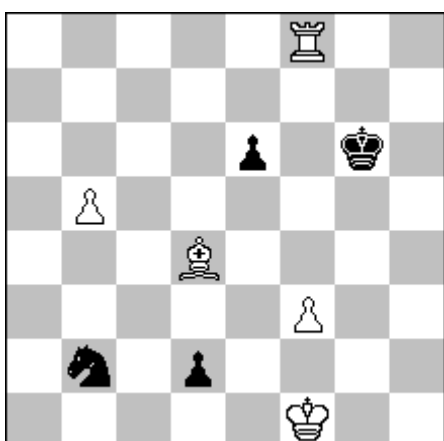


+ 3-4

A.Gerbstman cena Všestojuznyje pervenstva 1945

1. ♖f3 (0,5) ♜h6 2. ♙g8 ♜e7 3. ♚e6 (1) ♜g8 4. ♚f7 ♜h7
5. ♙g5 ♜h8 6. f3 (2) ♜h6 7. ♚g6 ♜g8 8. ♘f7 (1,5)

H

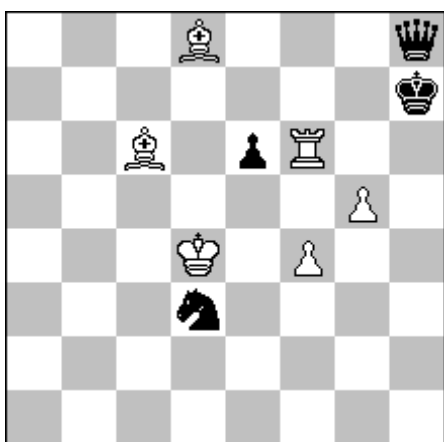


= 5-4

Hlinka-Kekely verzia originál pre RS 2018

1. ♜f6 (0,5) ♜h7 2. ♜h6 ♜g8 3. ♜h8 ♜f7 4. ♜h7 ♜e8 5. ♜h8 (1)
♜d7 6. ♜h7 ♜d6 7. ♙e5 ♜e5 8. ♜d7 (1) d1 ♜ 9. ♜d1
♜d1 10. b6 (1) ♜d6 11. b7 ♜c7 12. ♚e2 ♜b2 13. ♚e3 (1)
♜b7 14. f4 ♜c6 15. f5 e5 16. f6 (0,5)

I



+ 6-4

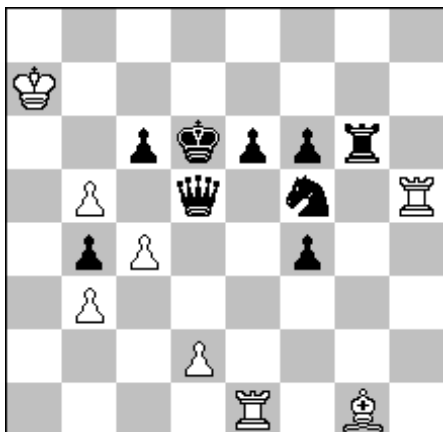
Jurij Bazlov 1.p.z. H.v.d. Heijden 50 JT

1. ♙e4 (0,5) ♜g7 2. ♙e7 ♜f4 3. ♜h6 (1) e5 4. ♚e5 ♜g6
5. ♜g6 ♜f7 6. ♜g7 (2) ♜g7 7. ♙f6 ♜f8 8. g6 ♜e8
9. ♘c6# (1,5)

28. medzinárodné majstrovstvá Slovenska

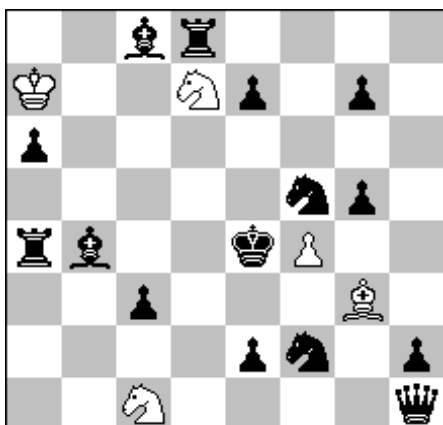
Bratislava 2020

J



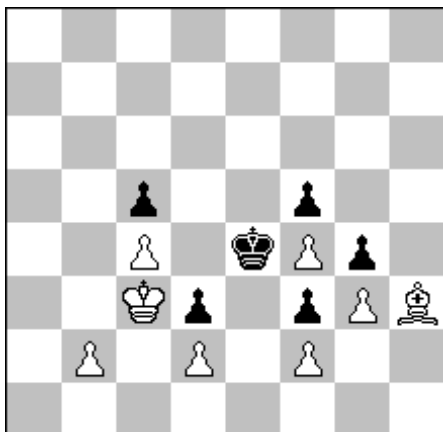
h#2 4.1.1.1 8-9

K



h#3 3.1.1.1.1.1 5-15

L



h#4,5 0.2.1.1.... 8-6

K.Prentos 1.p.z. Mat Plus 2007

1. ♖e4 ♙c5 2. ♜e5 d4

1. ♜d4 ♖e6 2. ♜c5 ♖c6

1. ♜b5 ♙e3 2. ♜e5 ♙c5

1. ♜g3 ♖e3 2. ♜c5 ♖e6

1 riešenie = 1 bod 2 riešenia = 2,5 bodu
3 riešenia = 4 body 4 riešenia = 5 bodov

M.Bílý 1.č.u. Chess Life 1989

1. ♜e3 ♘e5 2. ♝d2 ♘cd3 3. ♜e4 ♙f2

1. ♜f3 ♘d3 2. ♜e4 ♙f2 3. ♜g2 ♘7e5

1. ♙d6 ♙f2 2. ♜f4 ♘e5 3. ♝e4 ♘cd3

1 riešenie = 1,5 bod 2 riešenia = 3,5 bodu
3 riešenia = 5 bodov

G.Sobrescas 2.-3.c. Bron100 2009

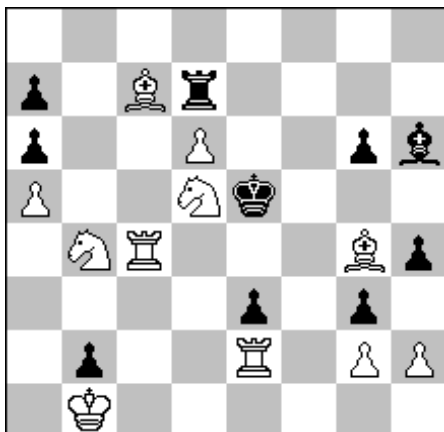
1...b4 2.cb ♙b2 3.b3 ♙c3 4.b2 ♙f1
5.b1 ♝ ♙d3 (2,5)

1...♙b3 2. ♜d4 ♙f1 3. ♜e4 ♙e2 4.de ♙c3
5.e1 ♝ d3 (2,5)

28. medzinárodné majstrovstvá Slovenska

Bratislava 2020

M



C.Gamnitzer SchwSchachzeitung 1989

1.h3 (2.♙d7 ~ 3.♙g4) (1)

1...♙f4 2.♘c6 ♜d5 3.Vec2 (1)

1..Vd6 2.Ve1 ~ 3.Vd1 (1)

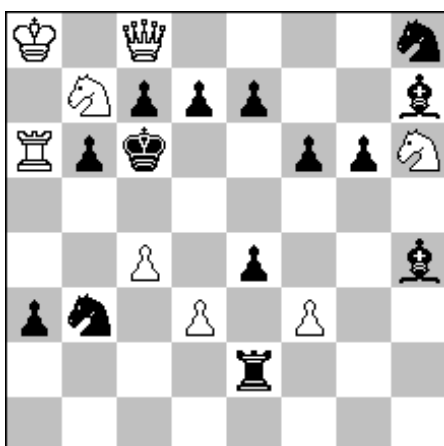
2...e2 3.Ve2 (1)

1..Vc7 2.dc ~ 3.c8♚ (1)

#4

11-10

N



Roche-Rotenberg 1.č.u. IRT 2011

1.♘g8 (2.♘e7)

1...ed 2.♚b8 ♙g3 3.f4 ♙f4 4.♚a7 (1,5)

1...ef 2.♚a7 ♙f2 3.d4 ♙d4 4.♚b8 (1,5)

1...♙g8 2.♚g8 (1)

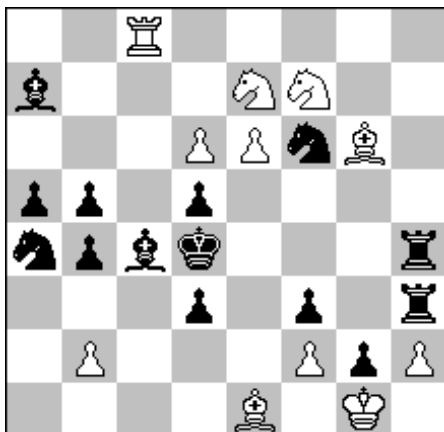
2...e6 3.♚f8 f5 4.♚b4 (0,5)

2...Jf7 3.♚f7 e6 4.♚e7 (0,5)

#5

8-14

O



Trommler-Zipf 4.c. Speckmann MT 2003

1.♙d2 (2.♙e3)

1...♙b2 2.♘f5 ♜e4 3.♘g7 ♜d4 4.e7 (2,5)

1...♙g4 2.♘c6 ♜c5 3.♘cd8 ♜d4 4.e7 (2,5)

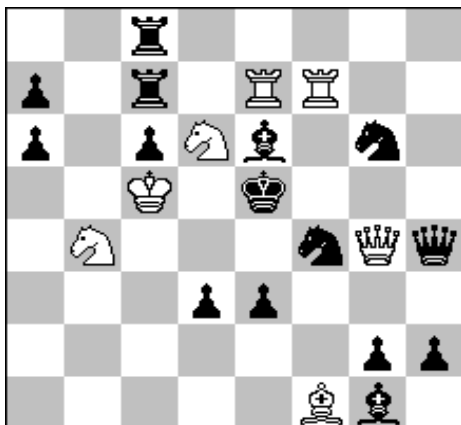
#5

11-14

28. medzinárodné majstrovstvá Slovenska

Bratislava 2020

P



E.Iwanow 3.c. Orbit 2012

1. ♖f3 (2. ♕e3)

1... ♜f~, ♜d5, gf ♜

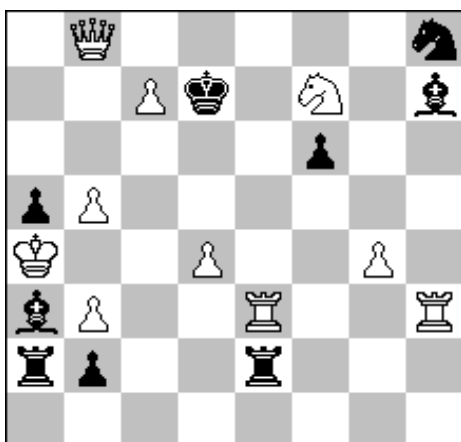
2. ♘c4, ♘c6, ♗d3

1 variant = 1 bod 2 varianty = 2,5 bodu
3 varianty = 4 body 4 varianty = 5 bodov

S#2

7-15

Q



F.Richter 3.c.SchwSchachZeitung 1987

1. ♖b7 (2. ♕c6 ♜c8 3. ♘d6) (1)

1... ♜c2 2.c8 ♘ ♜c7 3. ♖e7 (1)

1... ♜e3 2.c8 ♖ ♜e6 3. ♖e8 (1)

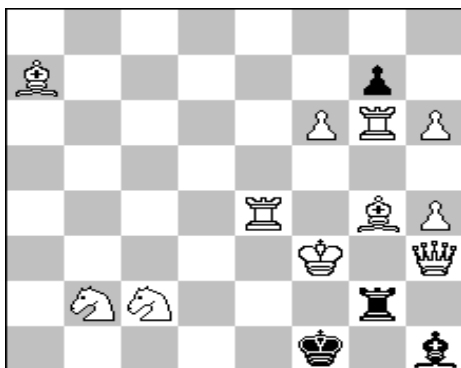
1... ♜e4 2.c8 ♗ ♜e8 3. ♖h8 (1)

1... ♜f7 2.c8 ♕ ♜d6 3. ♕c5 (1)

S#3

10-9

R



F.J.Prokop 100 samomatů 1940

1. ♗f5! tempo

1... gf 2. ♖e5 fe 3. ♕e4 ♜e2 4. ♕e3 ♜f1 5. ♕d3 (2,5)

1... gh 2. ♖gg4 h5 3. ♕h1 ♜g1 4. ♖gf4 ♜h1 5. ♗h3 (2,5)

S#5

11-4

28th Chess Solving Championship of Slovakia 2020 (Slovakia, Bratislava 12.09.2020-13.09.2020)

Problems Difficulty (10 Solvers)

ID	Tag	Difficulty	Average	5(Correct Solution)	0 < Pts. < 5	0 (Wrong Solution)	- (No Solution)
18	S#5	950	0.25	0	1	8	1
9	+	940	0.30	0	6	3	1
14	#5	850	0.75	0	2	7	1
13	#4	840	0.80	1	2	6	1
11	H#3	740	1.30	2	2	5	1
8	=	700	1.50	0	6	3	1
15	#5	700	1.50	2	2	5	1
7	+	660	1.70	3	2	4	1
5	#3	620	1.90	2	3	4	1
6	#3	600	2.00	4	0	5	1
17	S#3	600	2.00	4	0	5	1
3	#2	400	3.00	6	0	4	0
12	H#4,5	400	3.00	5	2	2	1
16	S#2	400	3.00	6	0	3	1
4	#3	350	3.25	6	1	2	1
10	H#2	310	3.45	3	6	0	1
2	#2	200	4.00	8	0	2	0
1	#2	100	4.50	9	0	1	0

Created by WFCC Solving Tournament Manager