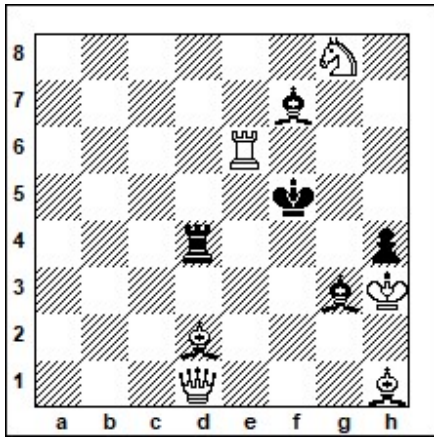


1

E. Pogosiants, 1978

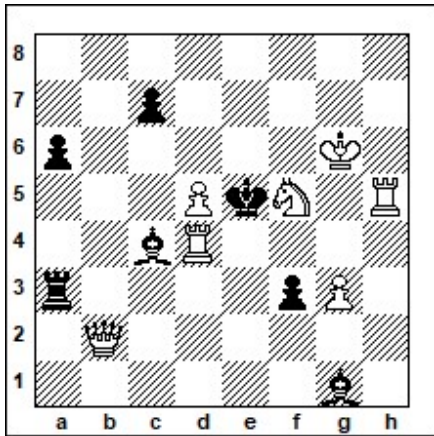


#2 (6 + 5)

1. ♔f4 [5.0]

2

Y. Vladimirov, Bulletin Of the Central chess club of the USSR, 1987, №18

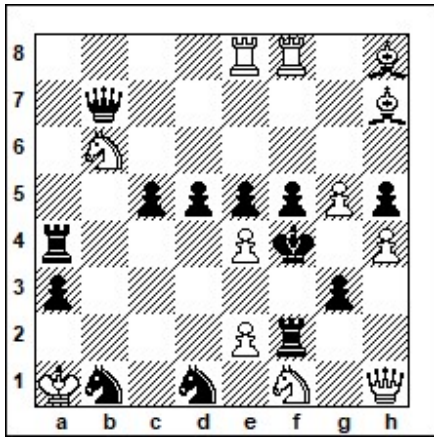


#2 (7 + 7)

1. ♖b4 [5.0]

3

A. Dombrovskis, A. Kopnin 1961, The competition in memory of S. Loyd, 1prize



#3 (12 + 13)

1. ♖g1 (→ 2. ♖g3 or 2. ♔f5) [2.0] ♜f1

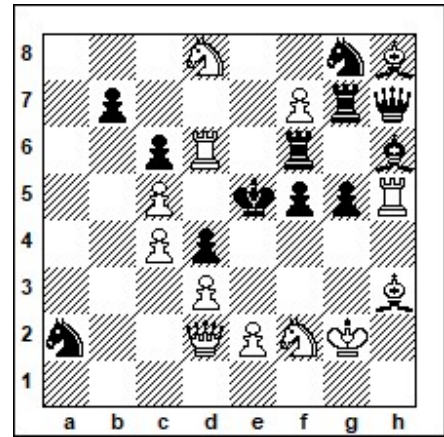
2. ♔e5 [1.0]

1... ♜e2 2. ♜f5 [1.0]

1... ♔e4 2. ♜e5 [1.0]

4

M. Velimirovich, Shvalbe, 1986



#3 (13 + 12)

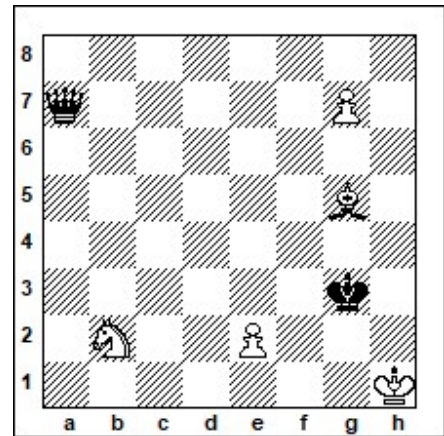
1. ♔f3 (→ 2. ♖e3! [2.0]) f4 2. ♜e6 [1.0]

1... ♜d6 2. ♖f4 [1.0]

1... g4 2. ♘g4 [1.0]

5

L. Kaiev 64, 1932



= (5 + 2)

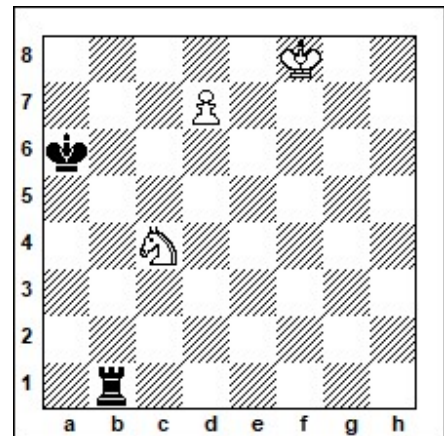
1. ♔h4 (1.0) ♔h3 2. g8 ♖ ♖a1 3. ♘d1

(2.0) ♖d1 4. ♔e1 (3.0) ♖e1 5. ♖g1 (4.0)

♖e2 6. ♖e3 (5.0) ♖e3

6

R. Gay, British Chess Magazine, 1938



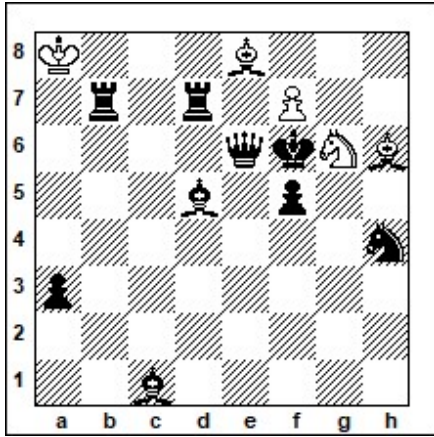
+ (3 + 2)

1. ♘b2 (1.0) ♜h1 2. ♔g7 (2.0) ♜g1

3. ♖f7 ♜f1 4. ♖e7 ♜e1 5. ♖d6 (3.0)
 ♜e2 6. ♘c4 (4.0) ♜e4 7. ♘b6 (5.0)

7

A. Nagnibidy, Bulletin CCC of USSR, 1988
 №4

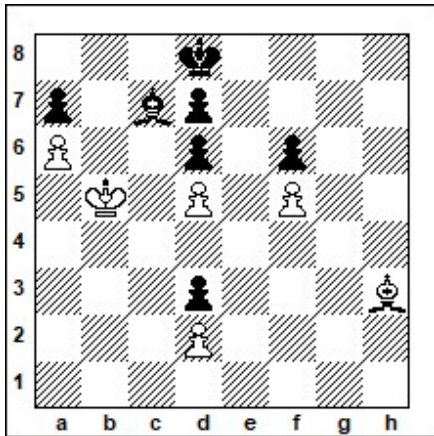


h#2 2 solution (5 + 9)

1. ♘g6 f8♙(♖) 2. ♘e7 ♖fg7x [2.5]
 1. ♖h6 f8♘ 2. ♖g7 ♘h7x [2.5]

8

M. Degenkolbe, 1987, «64-CO», 1989
 №4

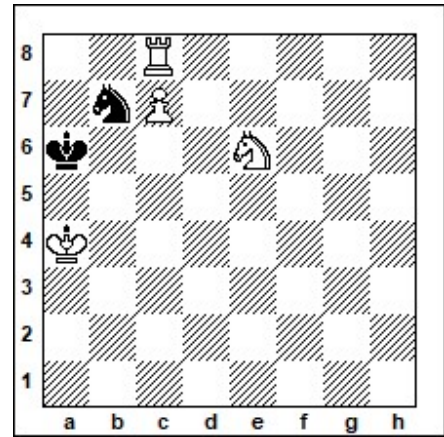


h#5 (6 + 7)

1. ♖b8 ♖c4 2. ♖c7 ♖d3 3. ♖b6 ♖c3
 4. ♖c5 d4 5. ♖d5 ♖g2X [5.0]

9

E. Pogosiants, 1973 «64», 1974, №36

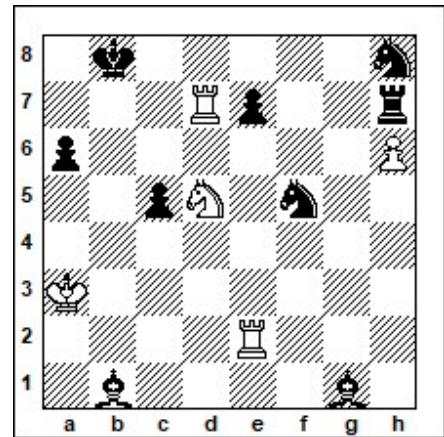


#4 (4 + 2)

1. ♜a8 ♖b6 2. ♜a6 ♖a6 3. c8♘ ♘∞
 4. ♘c5X [5.0]

10

I. Krikheli, 1978 «64», 1979 №46



#6 (5 + 9)

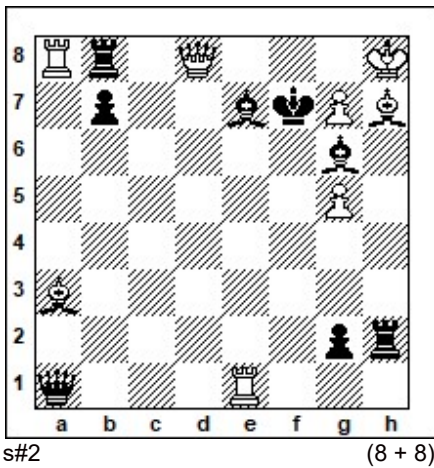
1. ♜g2 [2.0 with the variant] ♘g6 2. ♜b2
 ♖a8 3. ♘b6 ♖b8 4. ♘c4 ♖a8
 5. ♜bb7 (+1)

1... ♘g3 2. ♜b2 ♖a8 3. ♘c7 ♖a7 4.
 ♘e6 ♖a8 5. ♜db7 (+1.0)

1... ♘h6 2. ♜b2 ♖a8 3. ♘b6 ♖b8 4.
 ♘c4 ♖a8 5. ♜bb7 (+1.0)

11

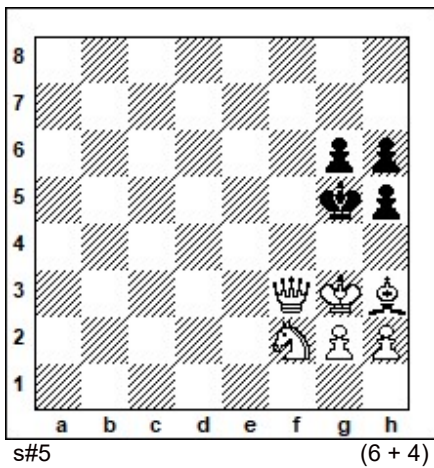
V. Rudenko, 1976 «Mat» (Poland) 1 prize



- 1. ♖a6 (→ 2. ♔g8+ [1.0])
- 1... ♕f8 2. ♗e7 [1.0]
- 1... ♕d8 2. ♖e7 [1.0]
- 1... ♕h7 2. g6 [1.0]
- 1... ♕h5 2. ♕g6 [1.0]

12

B. Veber, 1960 «64», 1979, №40



- 1. ♕e6 h4 2. ♖h3 h5 3. ♕g8 ♖h6
- 4. ♗f8 ♖g5 5. ♘g4 [5.0]

Problems Difficulty (14 Solvers)

ID	Tag	Difficulty	Average	5(Correct Solution)	0 < Pts. < 5	0 (Wrong Solution)	- (No Solution)
12	S#5	714	1.43	4	0	3	7
11	S#2	614	1.93	4	2	4	4
6	+	600	2.00	3	4	3	4
10	#6	572	2.14	6	0	4	4
9	#4	464	2.68	7	1	4	2
5	=	428	2.86	8	0	4	2
4	#3	414	2.93	7	3	4	0
8	H#5	414	2.93	5	8	1	0
7	H#2	328	3.36	8	4	1	1
1	#2	286	3.57	10	0	4	0
3	#3	242	3.79	8	5	0	1
2	#2	0	5.00	14	0	0	0

Created by WFCC Solving Tournament Manager