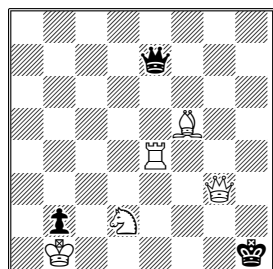




Други МЕМОРИЈАЛ МИЛАНА ВЕЛИМИРОВИЋА  
2nd MILAN VELIMIROVIĆ MEMORIAL  
РЕШЕЊА - SOLUTIONS

1

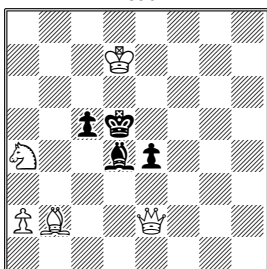
**Erich BRUNNER**  
*Deutsches WochenSchach*  
1908



#2 1. ♖c4!

2

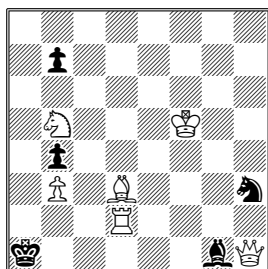
**Carl SCHLECHTER**  
*Wiener Hausfrauen-Zeitung*  
1896



#2 1. ♖e3!

3

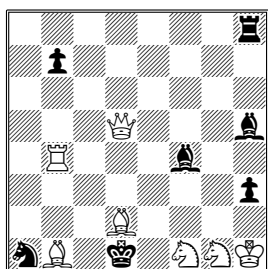
**B. J. Da Costa ANDRADE**  
*The Problemist* 1940



#2 1. ♖e2!

4

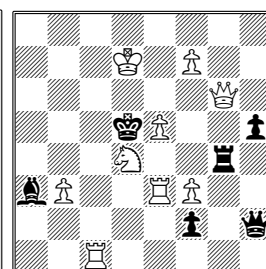
**Evgeny FOMICHYOV**  
*Schach* 1997



#2 1. ♖c4!

5

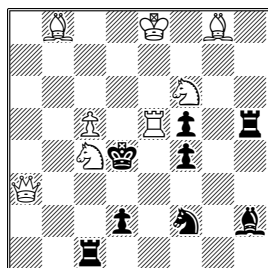
**Vasil DYACHUK**  
*1.Pr. Shakhmatna Misl* 2003



#2 1. ♖d3!

6

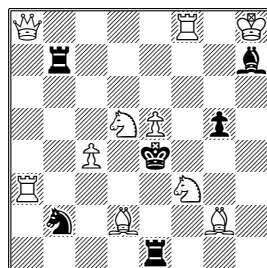
**Cornelis GROENEVELD**  
*Sinfonie Scacchistiche* 1987



#2 1. ♖b4!

7

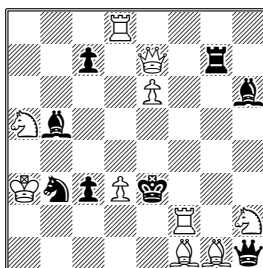
**Gerd RINDER**  
*Die Schwalbe* 1996



#2 1. ♖h3!

8

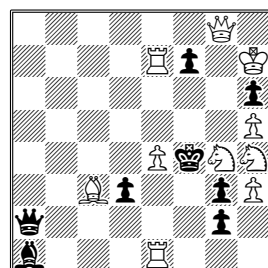
**Daniel PAPACK**  
*1.Pr. Schach* 2004



#2 1. ♖f6!

9

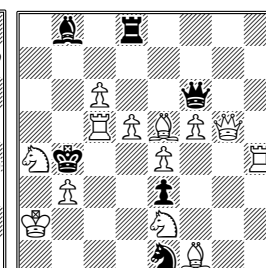
**Emanuel NAVON**  
*1.hm Israel Ring Tourney*  
1991



#2 1. ♖e5!

10

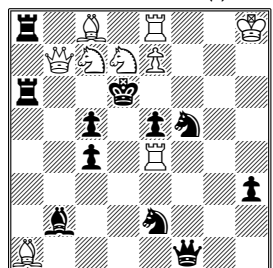
**Milan VELIMIROVIĆ**  
*3.hm The Problemist* 1975



#2 1. ♖c1!

11

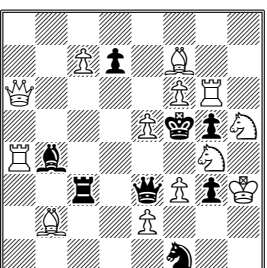
**Efren PETITE**  
*dedicated to U. Castellari*  
*Il Due Mosse* 1958 (v)



#2 1. ♖e5!

12

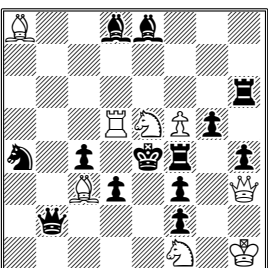
**Janos BUGLOS**  
*Scacchi e Scienze Applicate*  
2001



#2 1. ♖g8!

13

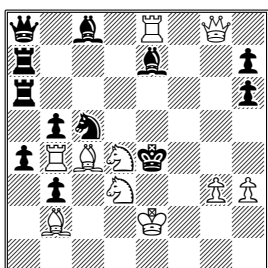
**Philippe ROBERT**  
*Europe Echecs* 1994



#2 1. ♖d7!

14

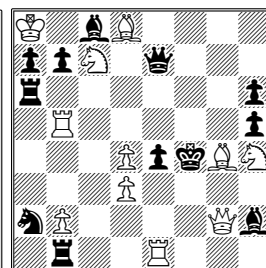
**Jens Peter PEDERSEN**  
*Pr. Dansk Skakproblem Klub*  
1934



#2 1. ♖b5!

15

**Joaquim VALLADAO MONTEIRO**  
*15.Pl. Israel - Brasil ST*  
1969-1971



#2 1. d:e4!

Bern, Cluj-Napoca, Москва, Ниш, Нови Сад, Rīga, Саратов, Тверь, Земун

Controllers:

Vlaicu Crişan, Borislav Gadjanski, Polina Kocheriagina, Igor Lukić, Olga Malyshkina, Pavel Murashev, Christel Ott, Siniša Remecki, Julia Vysotska,

(106 Solvers)

ID	Tag	Difficulty	Average	4(Correct Solution)	0 < Pts. < 4	0 (Wrong Solution)	- (No Solution)
15	#2	850	0.60	16	0	72	18
14	#2	840	0.64	17	0	76	13
13	#2	745	1.02	27	0	65	14
9	#2	735	1.06	28	0	70	8
12	#2	735	1.06	28	0	64	14
6	#2	708	1.17	31	0	71	4
5	#2	670	1.32	35	0	70	1
7	#2	660	1.36	36	0	60	10
11	#2	605	1.58	42	0	53	11
10	#2	565	1.74	46	0	51	9
8	#2	558	1.77	47	0	54	5
4	#2	473	2.11	56	0	47	3
3	#2	330	2.68	71	0	35	0
1	#2	303	2.79	74	0	31	1
2	#2	228	3.09	82	0	23	1

**Created by WFCC Solving Tournament Manager**