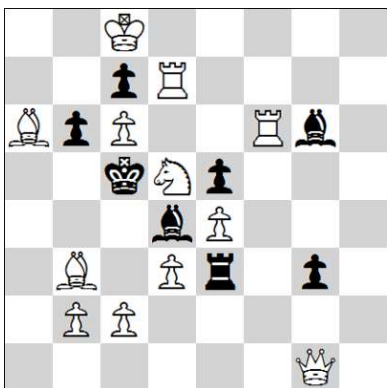


1. Miodrag Mladenović (original)

1.Dc8! @ ~ 2.Df5#
 Kd5: 2.Dc6:#
 Ld5:+ 2.Dc4#
 e6/e5 2.Sf6#
 Sc3+ 2.Sc3:#

@	1
p	5.0

#2

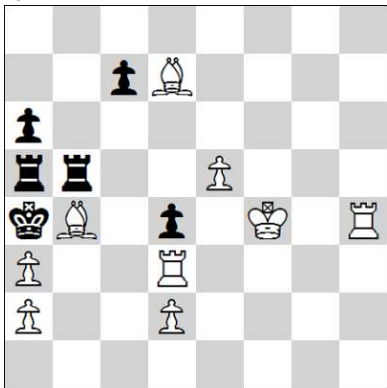


2. Miodrag Mladenović (original)

1.c3! ~ 2.cd4:+@ Kd4: 3.De3:#
 ed4: 3.Dc1#
 Te4: 2.Lc4@ ~ 3.b4#
 Td3: 2.La2@ ~ 3.b4#
 Te2 2.Lc2@ ~ 3.b4#
 Te1 2.Ld1@ ~ 3.b4#
 Lc3: 2.bc3:@ ~ 3.b4#

@	1	2	3	4	5	6
p	1.0	2.0	2.5	3.0	4.0	5.0

#3

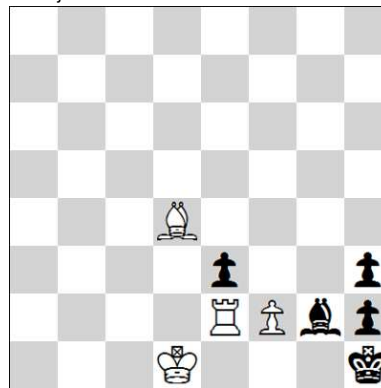


3. Philipp Klett (Westdeutscher Schachbund, Krefeld 1871)

1.Th6! zz
 c5 2.Th1 c4 3.Td4:@ c3 4.L~#
 cb4: 3.Ta1@ b3 4.ab3:#
 ba3: 4.Td4:#
 c6: 2.Tc6: T~ 3.Ta6:+@ ~ 4.Ta5:#
 Tb6 3.Tb6:+@ Tb5 4.Ta6:/Lb5:#
 Tb4: 3.Td6+@ Tab5 4.Ta6#
 Tbb5 4.T6d4:#

@	1	2	3	4	5
p	1.0	2.0	3.0	4.0	5.0

#4

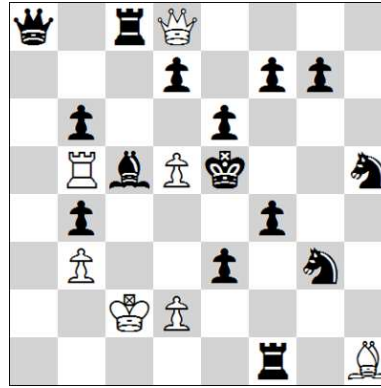


4. V. Korolkov 64, 1931 4th HM

1.Te1+! Lf1 2.Tf1:+ Kg2 3.Ke2 @ h1D 4.Th1: exf2 5.Tf1 @ h2
 6.Tf2:+ Kh3 7.Tf3+ @ Kg2 8.Le5 h1D 9.Tg3+ @ Kh2 10.Kf2 De4
 11.Te3+ @

@	1	2	3	4	5
p	1.0	2.0	3.0	4.0	5.0

#

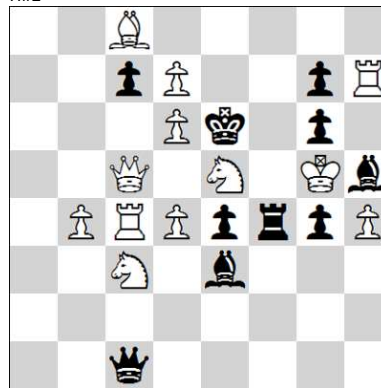


5. Živko Janevski (Kotelec 1987)

i) 1.Kd4 Db6: 2.e5 Tb4:# @
 ii) 1.Se4 d4+ 2.Kd5: Dd7:# @
 iii) 1.ed5: Le4 2.d4 De7# @
 iv) 1.f5 de6: 2.de6: d4# @

@	1	2	3	4
p	1.0	2.5	4.0	5.0

H#2

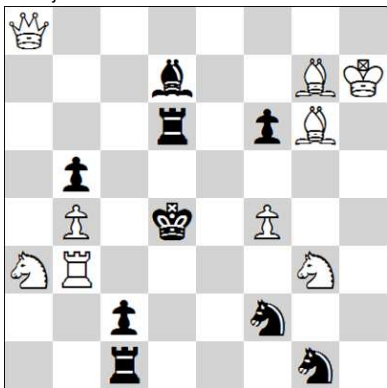


6. Miodrag Mladenović (original)

1.Db6! ~ 2.dc7:+ Ke7 3.Df6+ @ Tf6:#
 Ld4: 2.d8S++ Ke5 3.Sf7+ @ Tf7:#
 c6/cb6: 2.d8L+ Kd6: 3.Sf7+ @ Tf7#
 cd6: 2.d8T+ Ke7 3.Tg7:+ @ Tf7#
 Dc3: 2.d8D+ Kd5 3.Dg8+ @ Tf7#
 c5 2.d5+ Ke5: 3.Te4:+ @ Te4:#

@	1	2	3	4	5	6
p	1.0	2.0	2.5	3.0	4.0	5.0

S#3

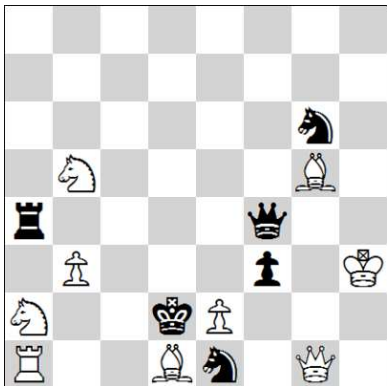


7. Percy F. Blake (The House 1898, 1st Prize)

1.Lf7! @ zz

@	1
p	5.0

#2

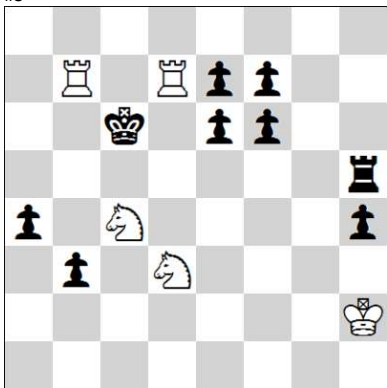


8. Miodrag Mladenović (original)

1.Df2! ~ 2.ef3:@ Kd3 3.De2#
Te4 2.e3+@ Kd3 3.Sc1#
Ta2: 2.e4+@ Kd3 3.Dd4#
Sd3 2.ed3+@ Kd3: 3.Lc2#

@	1	2	3	4
p	1.0	2.5	4.0	5.0

#3

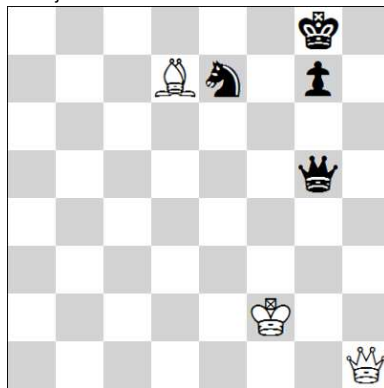


9. Hans Ott (Schweiz. Chachzeitung 1928)

1.Sa3! ~ 2.Sb4+ Kc5 3.Tb5#
Ta5 2.Kh3 zz
T~ 3.Sb4+@ Kc5 4.Tb5#
f5 3.Sc4@ ~ 4.Sa5:#
T~ 4.Se5#
Tb5 4.Tbc7#
Tc5 4.Sb4#
Td5 4.Tdc7#
e5 3.Sb4+@ Kc5 4.Td5#
b2 3.Sc2@ ~ 4.Sb4/Sd4#

@	1	2	3	4
p	1.0	2.5	4.0	5.0

#4



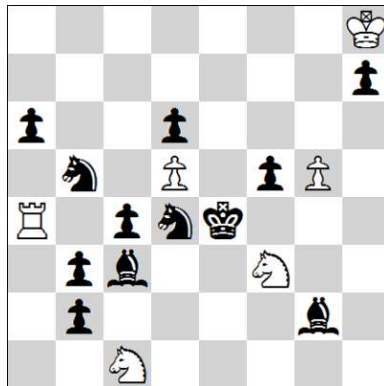
10. A. Troitzky (Deutsche Schachzeitung 1912)

1.Le6+ Kf8 2.Da8+ Sc8 3.Dc8:+ Ke7 4.Dd7+ Kf6
5.Dd8+ Kg6 6.Lf7+ @ Kf5 7.Dd5+ Kf4 8.Dd4+ Kf5
9.Kf3 @ g6 10.Dd5+ @ Kf6 11.Dd8+ @ Kf5 12.Le6+ @

7... Kg4 8.Df3+ Kh4 9.Dh1+ Kg4 10.Le6+ Kf4 11.Dc1+

@	1	2	3	4	5
p	1.0	2.0	3.0	4.0	5.0

+

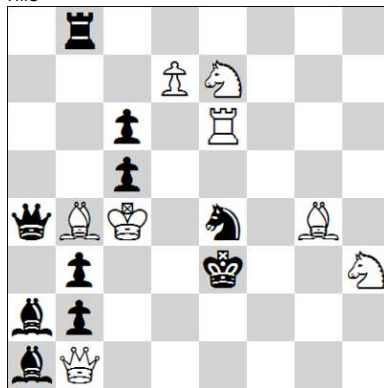


11. Christian Poisson (diagrammes 1994, 2nd HM)

i) 1.Kd5: Tc4: 2.Kc4: Sd3 3.d5 Sfe5# @
ii) 1.Ld2 Sd3 2.Kd3: Se5+ 3.Kc3 Tc4:# @
iii) 1.Se6+ Se5 2.Ke5: Tc4: 3.Ld5: Sd3# @

@	1	2	3
p	1.5	3.0	5.0

H#3



12. Charles H. Wheeler (The Chicago Daily Tribune 1900)
(version Miodrag Mladenović)

1.Dc2! ~ 2.Db3+ @ D/Lb3:#
b1S 2.Dd2+ @ Sd2:#
b1L/Lb1 2.Dd3+ @ Ld3:#
b1T 2.Dc1+ @ Tc1:#
Da5/Da7 2.Lc5+ @ Dc5:#
Da8 2.Sd5+ @ cd5:#
cb4: 2.Dc3+ @ bc3:#

@	1	2	3	4	5	6	7
p	1.0	1.5	2.0	3.0	3.5	4.0	5.0

S#2

Problems Difficulty (15 Solvers)

ID	Tag	Difficulty	Average	5(Correct Solution)	0 < Pts. < 5	0 (Wrong Solution)	- (No Solution)
4	+	920	0.40	1	1	6	7
9	#4	900	0.50	1	1	5	8
6	S#3	800	1.00	3	0	4	8
3	#4	666	1.67	4	2	4	5
11	H#3	654	1.73	1	9	0	5
10	+	614	1.93	4	7	4	0
2	#3	594	2.03	4	4	3	4
5	H#2	386	3.07	6	4	0	5
12	S#2	360	3.20	2	11	1	1
8	#3	280	3.60	10	1	1	3
7	#2	200	4.00	12	0	2	1
1	#2	66	4.67	14	0	1	0

Created by WFCC Solving Tournament Manager