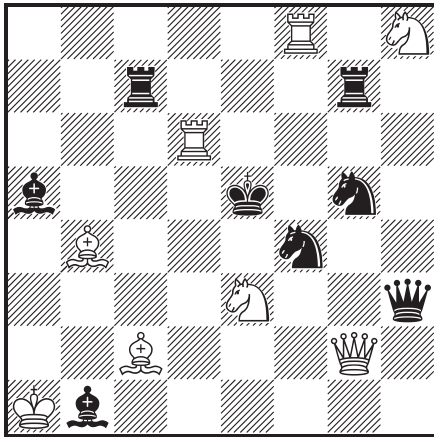


Naam:

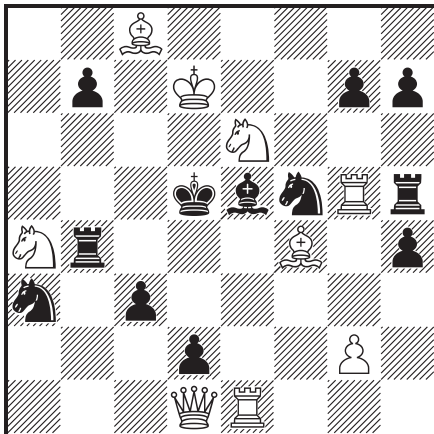
— N° 1 —



#2

8+8

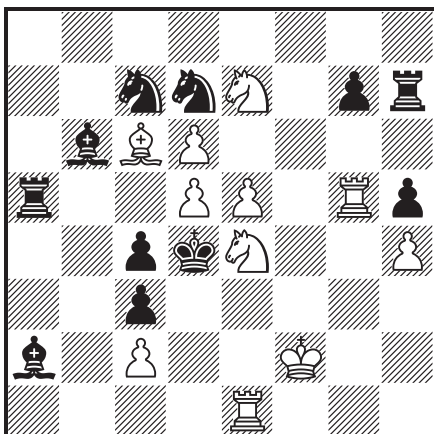
— N° 2 —



#3

9+12

— N° 3 —

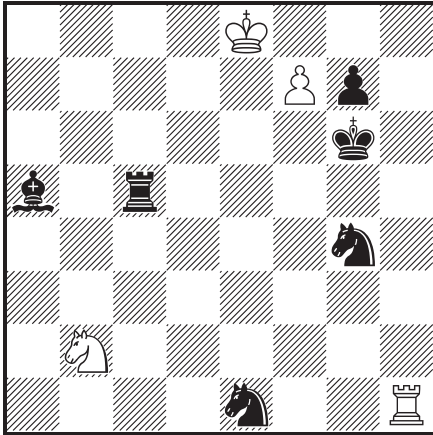


#4

11+11

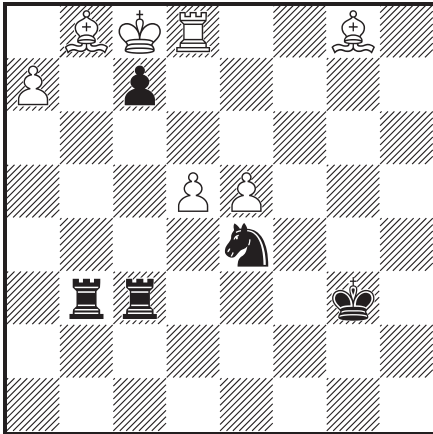
Naam:

— N° 4 —



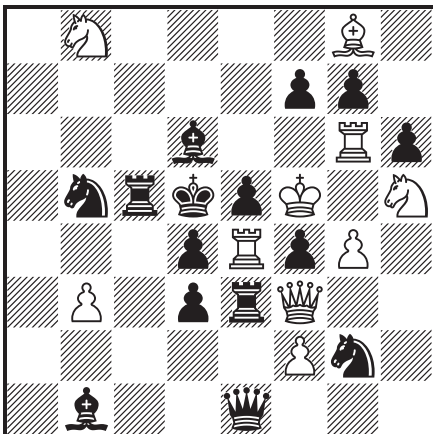
= 4+6

— N° 5 —



H#3 b) ♔g3->f2 7+5

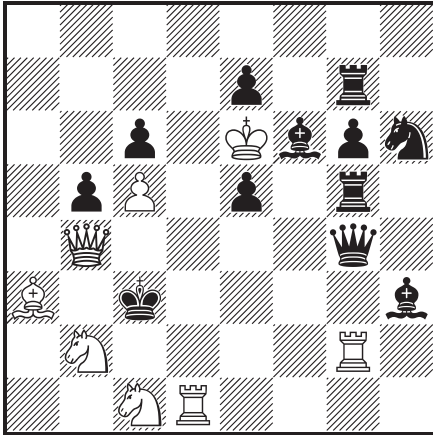
— N° 6 —



S#3 10+15

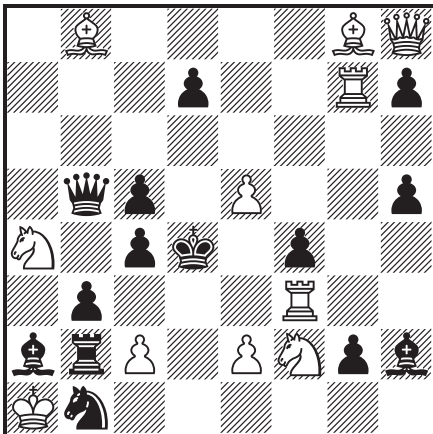
Naam:

— N° 7 —



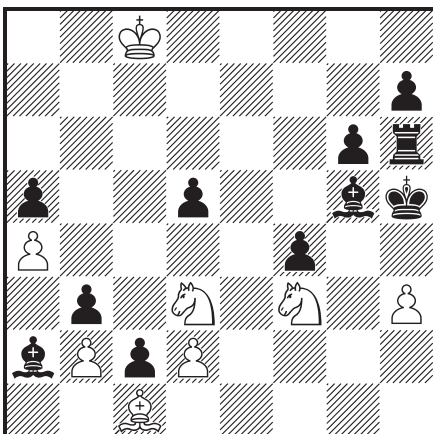
S#3 Madrasi 8+12

— N° 8 —



#3 11+14

— N° 9 —

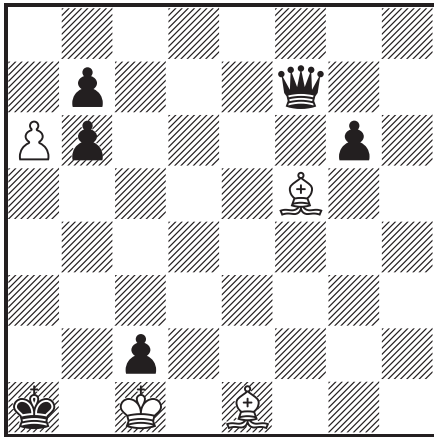


#11 8+11

Madrasi: units of the same kind other than kings are paralysed when they attack each other. Paralysed units cannot move, capture or give check, their only power being that of causing paralysis.

Naam:

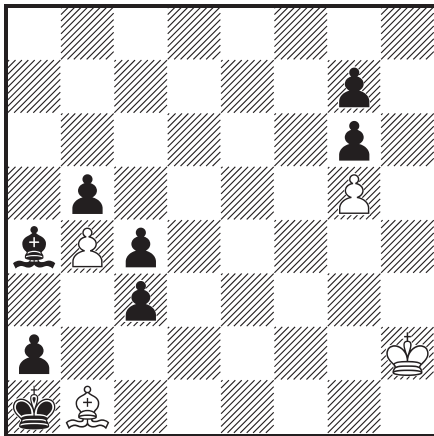
— N° 10 —



+

4+6

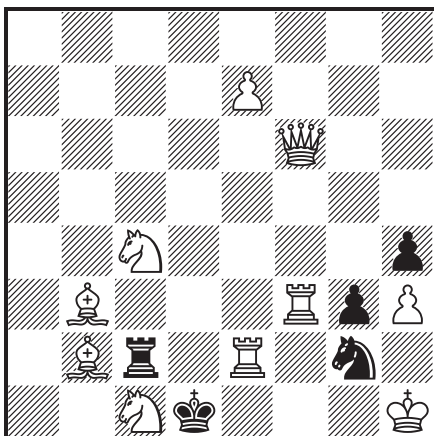
— N° 11 —



H#6

4+8

— N° 12 —



S#5

10+5