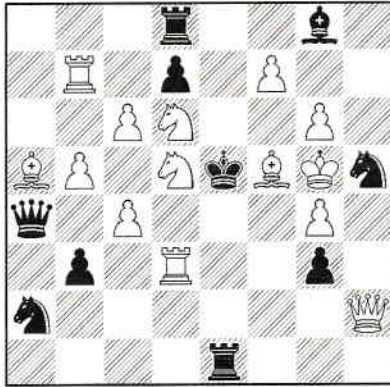


A



#2 (14+10)
C+

P.Wassong+ J. Rotenberg, Europe Echecs 1995

1.Ne7

B

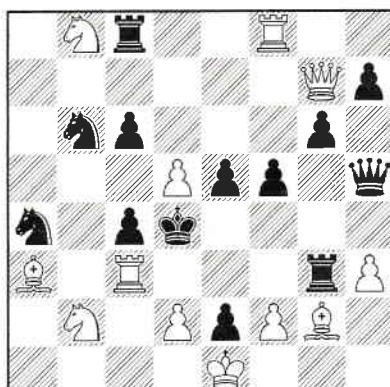


#2 (7+2)
C+

K. Žukovin, Szachy 1957 (mirror pos.)

1.Rh6 zz

C

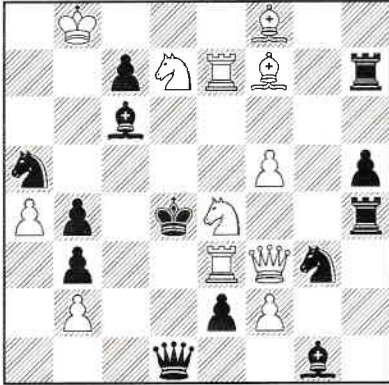


#2 (12+13)
C+

G. Maleika, 1 Pr TT-130 Superproblem 2015
(mirror pos.)

1.Bd6

D



#3 (12+13)
C+

R. Bourd, 1 Pr TT-130 Superproblem 2015
(mirror pos.)

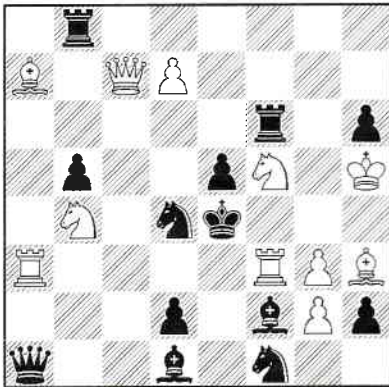
1.Ng5 thr. 2.Ne6+, 1.- Ne4 2.R7xe4+

1.- Re4 2.R3xe4+, 1.- Be4 2.Qxe4+

1.- Rh6 2.Bg7+

five variants, 1 point for each variant

E



#3 (11+13)
C+

B. Zappas, 13-14 Pl 1 WCCT 1972-1975

1.Kh4 thr. 2.Rf4+, 1.- Rxf5 2.Qc6+,

1.- Bxf3 2.Qc2+, 1.- Nxg3 2.Re3+

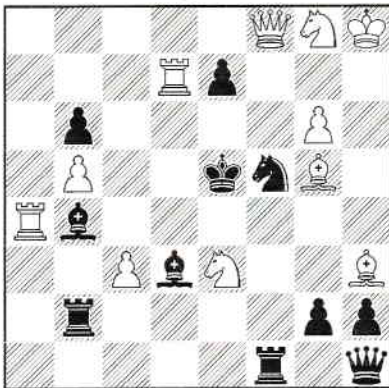
1.- Bxg3 2.Nxg3+, 1.- Nxf5 2.Bxf5+

1- Nxf3 2.gxf3+, 1.- Ne2 2.Nd6+

1.- Be3 2.Raxe3+/Rfxe3+

nine variants, for first variant 0.6 pt, for eight remaining variants 0.55 pt. each

F



#3 (11+11)
C+

V.Alexandrov, Probleemblad 2016 (mirror pos.)

1.Rd6 thr. 2.Qxe7+, 1.- Bc4 2.Nxc4+

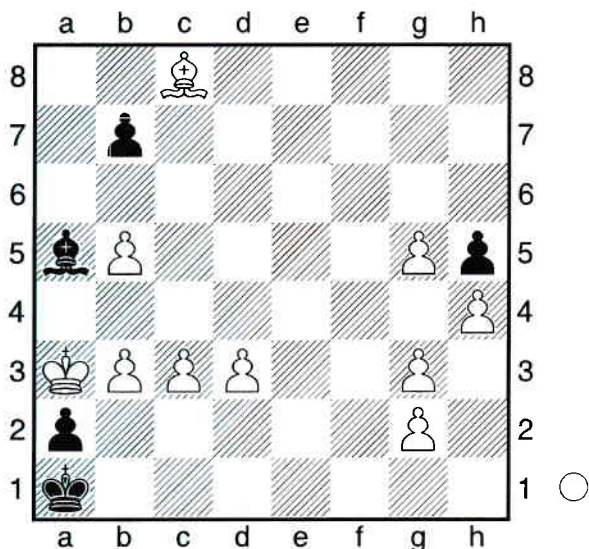
1.- Bxd6 2.Bf6+, 1.- exd6 2.Qe8+

1.- e6 2.Ng4+, 1.- Ke4 2.Qa8+

1.- Kxd6 2.Qd8+

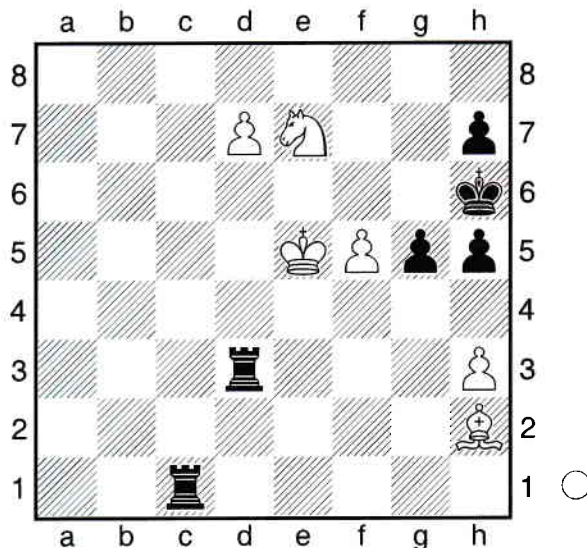
seven variants, for first variant 0.8 pt., for six remaining variants 0.7 pt each

Bron - předehra Polášek
1.hm Zaporozskaja Pravda 1962 (1)



- 1.Bf5! +1=1**
[1.d4? Bb4+! 2.cxb4 b6 3.g6 Kb1 4.Bf5+ Ka1 5.g7 pat]
- 1...Bb4+!** Pokus o patovou záchranu
[beznadějně je 1...Bxc3 2.b4! a bílé pěšce nelze zadržet, např. Bd4 (2...Kb1 3.d4+ Ka1 4.Be6) 3.Be6 Kb1 4.Bxa2+ Kc2 5.g4]
- 2.cxb4** a jsme v původní Bronově studii **2...b6**
[řešitelé se musí uznat i následující přehození tahů 2...Kb1 3.d4+ Ka1 4.Bh7! +1=2 b6 a dále jako v hlavní variantě]
- 3.Bh7! +1=2 3...Kb1 4.d4+ Ka1 5.g6 Kb1 6.g7+ Ka1 7.g4 hxg4 8.g8R! +2=4**
[8.g8Q? g3 s patem]
- 8...g3 9.Rg6! +1=5**
1-0

Polášek podle Troického
■ **originál**
!!! nepublikovat !!!

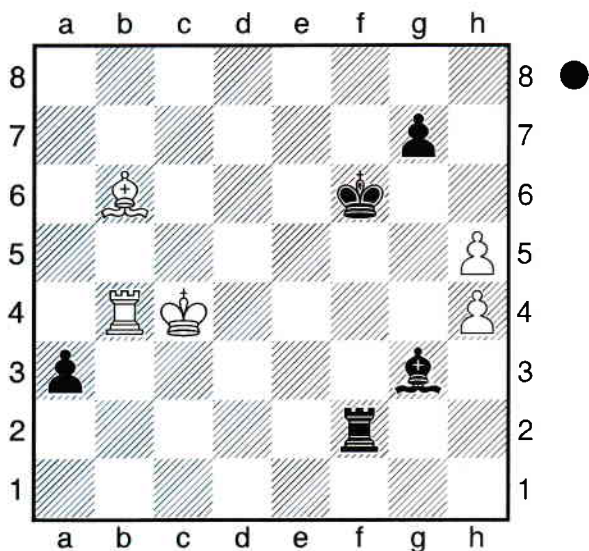


- 1.Nd5!**
[1.Kf6 h4 2.Ng8+ Kh5=]
- 1...Re1+**
[1...Kg7 2.Ke4 nejjednoduši (2.d8Q?? Re1+ 3.Kd6 Rxd5+ 4.Kxd5 Rd1+; či 2.Ke6 vyhrava stejným způsobem) 2...Rxd5 3.Kxd5 Rd1+ 4.Ke6 Rxd7 5.Be5+! Kf8 6.Kxd7 a vyhraje]
- 2.Kf6! +1=1**
[2.Kd6?? Rd1 3.d8Q Rxd5+-+]
- 2...Rxd5 3.h4! +1=2 3...Rxf5+!** Jediná obrana proti matu
[3...gxh4 4.Bf4#]
- 4.Kxf5 Rf1+!**
[4...Rd1 5.Be5! (nebo 5.Kf6 Rf1+ 6.Ke6 s přechodem do hlavní varianty) 5...gxh4 (5...Rf1+ 6.Ke6 Rf8 7.Ke7 Rg8 8.Kf7) 6.Kf6 a vyhraje (hrozí Sf4 mat) Rf1+ 7.Ke7 Rd1 8.Bd6]
- 5.Ke6 Rf8 6.Bd6! +1=3 6...Rg8!**
[6...Ra8 7.Kf6]
- 7.Be7!**
[7.Kf6? Rg6+ 8.Ke7 Rg7+=]
- 7...gxh4 8.Kf7! +1=4** (důležitý mezitah) **8...Ra8 9.d8Q Rxd8 10.Bxd8 h3 11.Bh4 h2 12.Kf6 h1Q 13.Bg5# +1=5**
1-0

Polášek podle Fr. Richtera

■ BTM

original - nepublikovat !!!



1...Rf4+

[1...Rb2 2.Bd4+ (nebo 2.Rb3) 2...Be5 3.Bxb2]

2.Bd4+ Rxd4+! 3.Kxd4 +1=1 3...Be5+!

[Po 3...a2 4.Rb6+ Kf5 5.Rb5+ Ke6 6.Ra5 (nebo 6.Rb6+ Bd6 7.Ra6 a1Q+ 8.Rxa1 Be5+ 9.Ke4 jako po 6.Va5) 6...a1Q+ 7.Rxa1 Be5+ 8.Ke4 Bxa1 černému zbude falešný střelec nebo se bílému podaří zlikvidovat černého pěšce, např. 9.h6 g6 10.Kf4 Bf6 11.h7 Kf7 12.h8Q Bxh8 13.h5]

4.Ke4 a2 5.Rb6+! +1=2

[5.Ra4?! a1Q 6.Rxa1 Bxa1 7.h6 g6 8.h7 (8.h5 g5) 8...Kg7 (8...Ke6? 9.Kf4=) 9.h5 g5! 10.Kf5 Bf6 11.h8Q+ Kxh8 12.Kxf6 g4 13.Kg5 g3 14.Kg6 g2 15.Kh6 Kg8! (15...g1Q? pat)]

5...Kf7 6.Rb7+ Kg8

[6...Kf6 7.Rb6+ s opakovaním tahu]

7.Ra7 a1Q 8.Rxa1 Bxa1 v tehle pozici zacina Richter s tim rozdílem, ze krale ma na h8 9.h6 g6 10.h5 +1=3 10...g5

11.Kf5 Bf6! 12.Kxf6 g4 13.Kf5! +1=4

[nebo 13.Kg5! +1=4]

13...g3 14.Kg6 g2 15.h7+ Kh8 16.Kh6 g1Q +1=5 pat

podle F. Richtera 2.sp.p Schackvärlden#165 1937

1/2

J



H#2 4 řeš./4 sols (10+10)
C+

C. Feather 1 Pr The Problemist 1979 (mirror pos.)

1.Qxd3 Rb1 2.Kxc5 Nxd3#

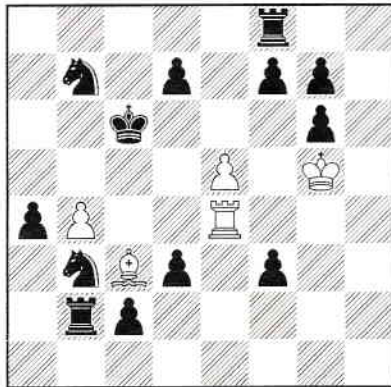
1.Qxc5 Nxc5 2.Rxd1 Nd3#

1.Qxe6 Nxe6 2.Rxg3 Nf4#

1.Qxf4 Bh4 2.Kxe6 Nxf4#

4 solutions, each solution 1.25 pts

K



H#3 4 řeš./4 sols (5+13)
C+

F-Abdurahmanovič+G-Chumakov

2 Pr The Problemist 2011 (mirror position)

1.Nc5 bxc5 2.Kb5 Rb4 3.Ka5 Rb6#

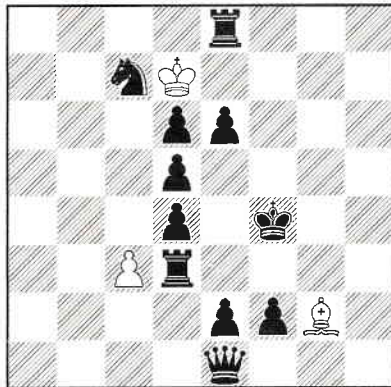
1.Nd6 exd6 2.Kxd6 Be5 3.Ke7 Bc7#

1.Kd5 Rd4 2.Kxe5 Rd5 3.Ke4 Re5#

1.Kb5 Bd4 2.Kxb4 Bc5 3.Kc3 Bb4#

4 solutions, each solution 1.25 pts

L



H#5 2 řeš./2 sols (3+11)
C+

O. Shaligin, 2 HM J.Fokin 90 JT 2015 (Zadachi i etyudy 2015) mirror position

1.Ke5 Be4 2.dxe4 Kxc7 3.Kd5 Kb6 4.e5 Kb5

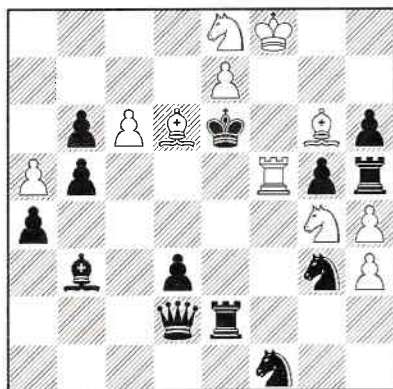
5.Re6 c4#

1.Ke3 c4 2.Qc3 Kxd6 3.Rd2 Ke5 4.Kd3 Kf4

5.dxc4 Be4#

2 solutions, each solution 2.5 pts

M



#4 (11+13)

C+

C. Gamnitzer, 1 Pr Schweizerische Schachzeitung 1993

1.a6 thr. 2.Nc7+ Kxd6 3.Nxb5+

1.- Qa5 2.Bf4 gxf4 3.Nf7+

1.- Bc4 2.Bc5 bxc5 3.Rf6+

three variants

1.7 pts for one variant

3.35 pts for two variants

5 pts for three variants

N



#5 (13+8)

C+

M. Marandiyuk, 2 Pr 2 FIDE World Cup 2011 (mirror position)

1.d6 thr. 2.Ng5xe6+ Ke4 3.Nc5+ Nxc5 4.Rg4+

1.- Bb3 3.Rxf3+ Kg4 3.Rg3+ Kf4 4.Nh7+

1.- Rc8 2.Ng7xe6+ Kxf5 3.Ng7+ Kf4 4.Nh3+

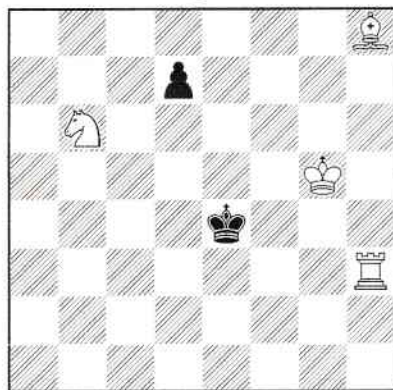
three variants

1.7 pts for one variant

3.35 pts for two variants

5 pts for three variants

O



#6 (4+2)

C+

O. Sushkov, 1-2 Pr 6th Ty Smena 1997

(mirror position)

1.Bc3 zz (no point)

1.- d6 2.Bb4 Ke5 3.Re3+ Kd4 4.Kf4 d5 5.Re2 (1.75 pts), 2.- d5 3.Bc5 d4 4.Bd6 d3 5.Bc5 (1.25 pts)

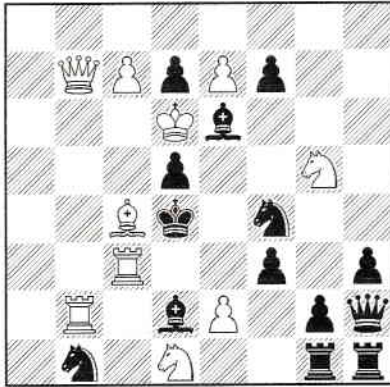
1.- d5 2.Nd7 d4 3.Nf6+ Ke5 4.Bb4 Ke6 5.Rh7 (1.75 pts), 4.- d3 5.Re3+ (0.25 pt)

or:

1.- d6 2.Bb4 d5 3.Bc5 d4 4.Bd6 d3 5.Bc5 (1,75 pts), 2.- Ke5 3.Re3+ Kd4 4.Kf4 d5 5.Re2 (1.25 pts)

1.- d5 2.Nd7 d4 3.Nf6+ Ke5 4.Bb4 d3 5.Re3+ (1.75 pts), 4.- Ke6 5.Rh7 (0.25 pt)

P



S#2

(10+14)

C+

F. Richter, 4 Pr Die Schwalbe 2013

1.Bb5 thr. 2.Rd3+

1.- Bxc3 2.Rb4+

1.- Nxc3 2.Rxd2+

1.- Bf5 2.Qxd5+

four variants, 1.25 pts for each variant

R



S#4

(10+13)

C+

M. Caillaud, HM Zadachi i etyudy 2011 (mirror pos.)

1.Qe3 zz (no point)

1.- h4 2.Rf3+ Kh5 3.Be2+ g5 4.Rf6+

1.- Nf6 2.Re4+ Kf5 3.Bd3+ Nd5 4.Re6+

1.- Ne7 2.Rf7+ Kh4 3.Qxe7+ g5 4.Rxh7

three variants

1.7 pts for one variant

3.35 pts for two variants

5 pts for three variants

S



S#6

(12+9)

C+

P. Petkov, 1 Pr Die Schwalbe 1983 (mirror position)

1.Qd8 zz (no point)

1.- Ba2 2.Qf6+ gxf6 3.Bxc2+ f5 4.Nd3+ Ke4 5.Nb4+ Ke5 6.Rxe3+

1.- Bd2 2.Bf6+ gxf6 3.Bc8+ f5 4.Nd7+ Ke6 5.Nb6+ Ke5 6.Qd6+

two variants, 2.5 pts for each variant

Problems Difficulty (26 Solvers)

ID	Tag	Difficulty	Average	5(Correct Solution)	0 < Pts. < 5	0 (Wrong Solution)	- (No Solution)
18	S#6	1000	0.00	0	0	25	1
17	S#4	872	0.64	2	2	22	0
15	#6	870	0.65	3	1	22	0
12	H#5	866	0.67	0	7	19	0
6	#3	790	1.05	2	5	19	0
8	+	784	1.08	3	5	18	0
9	=	592	2.04	7	14	5	0
11	H#3	538	2.31	7	11	8	0
4	#3	524	2.38	10	3	13	0
13	#4	524	2.38	11	4	11	0
14	#5	448	2.76	12	6	8	0
7	+	430	2.85	14	4	8	0
10	H#2	384	3.08	12	8	6	0
5	#3	290	3.55	11	10	5	0
1	#2	154	4.23	22	0	4	0
2	#2	116	4.42	23	0	3	0
3	#2	76	4.62	24	0	2	0
16	S#2	58	4.71	23	2	1	0

Created by WFCC Solving Tournament Manager