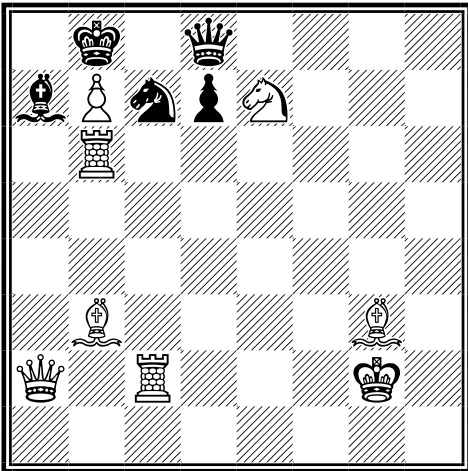


*Russian Women Chess Solving Cup, Tula 2018*  
*1<sup>st</sup> round. Twomovers.*  
**SOLUTIONS**

#2-1

Da Costa Andrade *The Chess Review*, 1924



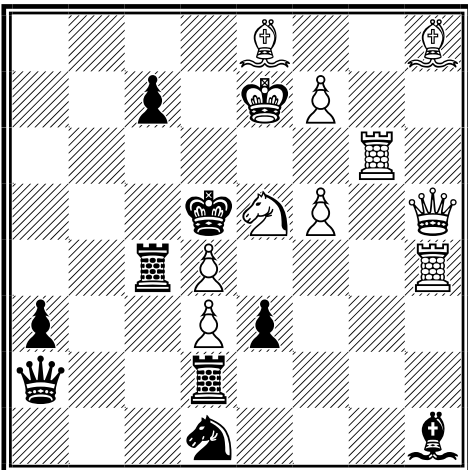
1.Bg8 [5 points]

#2

8+5

#2-2

D. Papack *Rochade Europa*, 2012



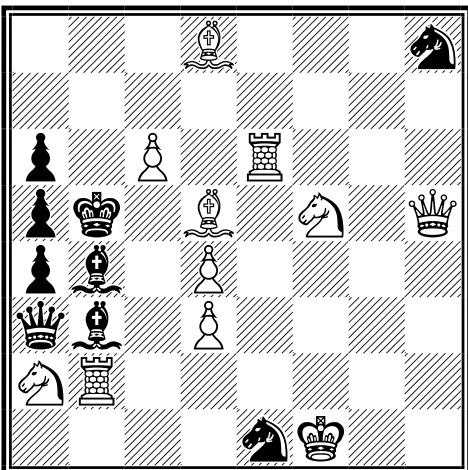
1.Sd7 [5]

#2

7+12

#2-3

M. Kovacevic *1<sup>st</sup> Pr. JT Myllyniemi*, 1980



1.Qe8 [5]

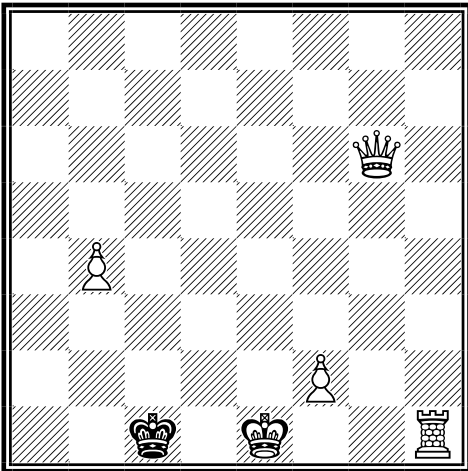
#2

11+9

*Russian Women Chess Solving Cup, Tula 2018*  
 2<sup>nd</sup> round. Threemovers.  
**SOLUTIONS**

#3-1

S. Demidiuk 8<sup>th</sup> Pr. "Povenets-500", 1996 (version)



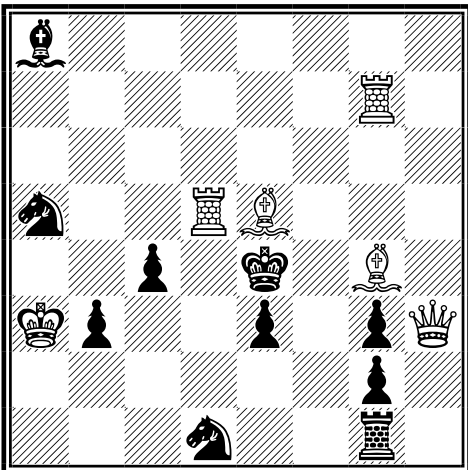
- 1.Qa6  
 1...Kb1 2.Qe2 (threat) [2]  
 1...Kc2 2.Qa3 [1,5]  
 1...Kb2 2.Kd2 [1,5]

#3

5+1

#3-2

S. Kriuchkov 2<sup>nd</sup> HM Shakhmaty v SSSR, 1939



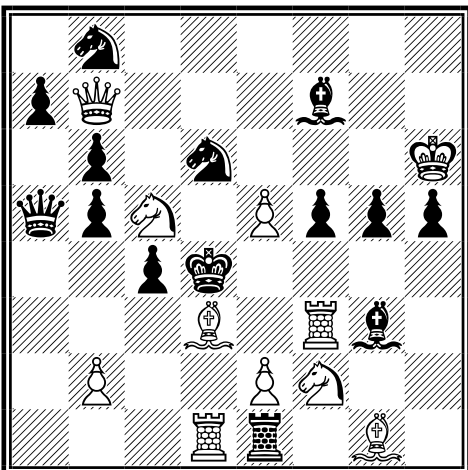
- 1.Rb7  
 threat 2.Rd4+ [1]  
 1...K:d5 2.Rb5+ [1,5]  
 1...Sc6 2.Qh7+ [1,5]  
 1...Rf1 2.Q:g2+ [1]

#3

6+10

#3-3

A. Lobusov 1<sup>st</sup> Pr. Neue Zürcher Zeitung, 1982



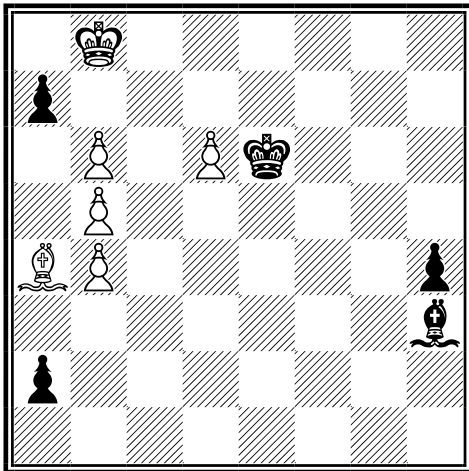
- 1.Qc7  
 threat 2.Q:d6+ [1]  
 1...B:e5 2.Be4+ [0,5]  
 1...Sd~ 2.Be4+ [0,5]  
 1...bc5 2.Se4+ [1]  
 1...Bd5 2.Sg4+ [0,5]  
 1...K:e5 2.Sg4+ [0,5]  
 1...cd3 2.Rf:d3+ [1]

#3

11+14

**Russian Women Chess Solving Cup, Tula 2018**  
**3<sup>rd</sup> round. Studies.**  
**SOLUTIONS**

eg-1



V. Kalashnikov *HM MT Akobia, 2017*

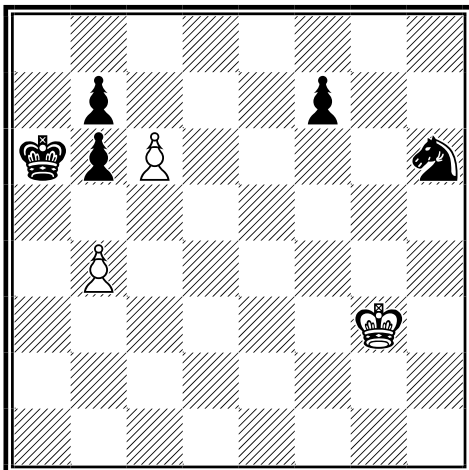
1.d7 [1] K:d7 2.ba7 a1Q 3.a8Q Qh8+ 4.Ka7  
 Q:a8+ 5.K:a8 Bg2+ 6.Ka7 [1] h3 7.b6+ [1] Kc8  
 8.Bb5 Bb7 9.Ba6 [1] B:a6 10.b5 Bb7 [1] stalemate  
 1/2-1/2

(1.ba7? a1Q 2.a8Q Qh8+ 3.Ka7 Q:a8+ 4.K:a8 Bg2+  
 5.Ka7 h3 6.d7 Ke7! wins)

Draw

6+5

eg-2



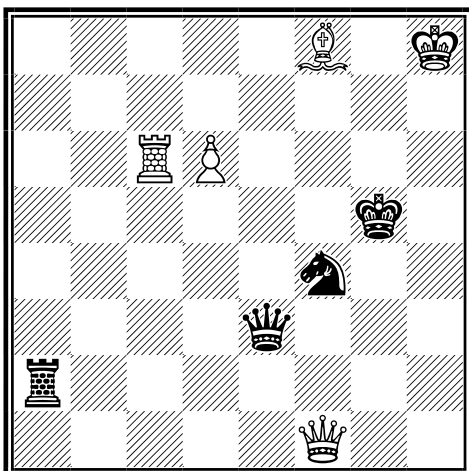
S. Tkachenko *1<sup>st</sup> Pr. Krasny Sever, 1992*

1.b5+ [1] Ka7 2.c7 Sf5+ 3.Kf4 Se7  
 4.Ke5 Ka8 5.Kd6 [1] Sc8+ 6.Kd5 [1] Se7+  
 7.Ke5 Ka7 8.Kd6 Sc8+ 9.Kd7 [2]  
 1-0

Win

3+5

eg-3



Y. Afek *2<sup>nd</sup> Pr. MT Valois, 2015*

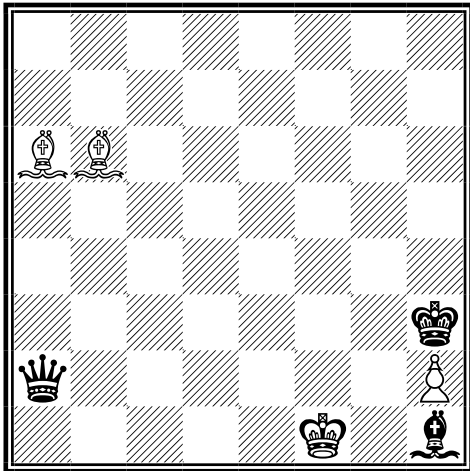
1.Bh6+ [1] K:h6 2.d7+ Sg6+ 3.R:g6+ [1] K:g6  
 4.Qb1+ Rc2 5.Q:c2+ [1] Kf7 6.Qh7+ Ke6  
 7.d8R [1] Qe5+ 8.Qg7 Qh5+ 9.Kg8 [1]  
 1-0

Win

5+4

*Russian Women Chess Solving Cup, Tula 2018*  
*4<sup>th</sup> round. Helpmates.*  
**SOLUTIONS**

*h#-1*



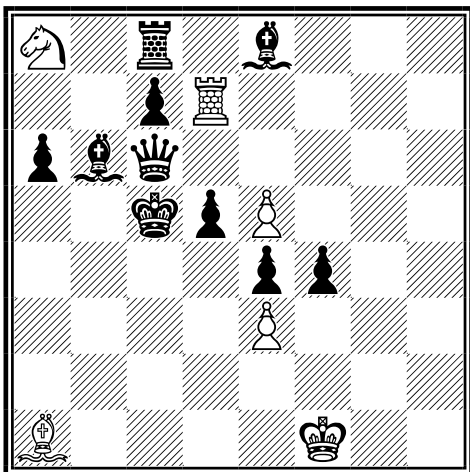
L. Barna *1<sup>st</sup> Comm. TT Tipografia, 1968.*

1.Q:h2 Bf2 2.Ba8 Bc8# [2,5]

1.K:h2 Bc8 2.Qa8 Bc7# [2,5]

**h#2      2 solutions      4+3**

*h#-2*



C. Poisson *Die Schwalbe, 1994*

1.fe3 Bd4+ 2.K:d4 S:b6 3.Qc3 R:d5# @

1.Qb7 S:b6 2.K:b6 R:d5 3.Bc6 Bd4# @

1.Qe6 R:d5+ 2.K:d5 Bd4 3.c6 S:b6# @

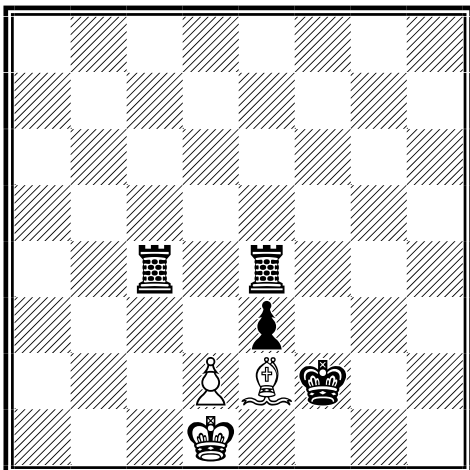
@ = 2

@@ = 3,5

@@@ = 5

**h#3      3 solutions      6+10**

*h#-3*



M. Milanovic *Comm. JT Gershinsky, 2016*

1.Rcd4 Bh5 2.Rg4 Kc2 3.Ke2 Kc1  
 4.Kd3 Kd1 5.Rge4 Be2# [5]

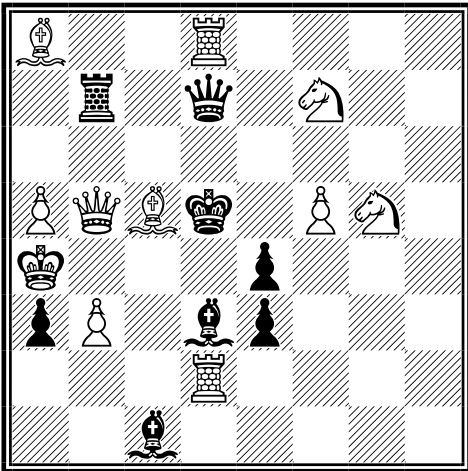
**h#5      3+4**



*Russian Women Chess Solving Cup, Tula 2018*  
*6<sup>th</sup> round. Selfmates.*  
**SOLUTIONS**

s#-1

E. Visserman *1<sup>st</sup> HM Skakbladet, 1960*



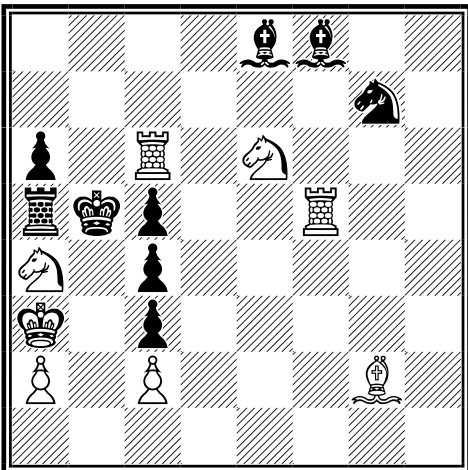
- 1.Se6  
 threat 2.Bd6+ [1]  
 1...Qd6 2.Bd4+ [1]  
 1...Q:d8 2.Qd7+ [1]  
 1...B:d2 2.B:a3+ [1]  
 1...ed2 2.Bb4+ [1]

s#2

11+8

s#-2

Z. Janevski *Pat a Mat, 2003*



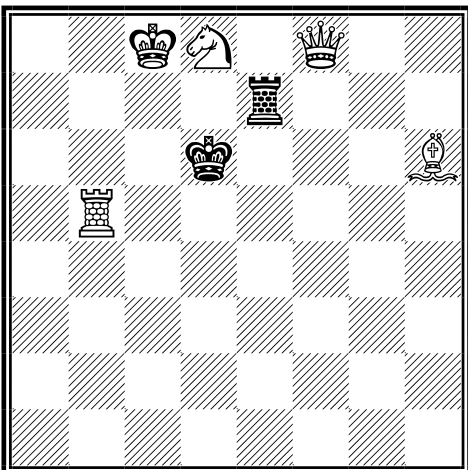
- 1.Rf7  
 threat 2.Sd4+ cd4+ 3.Rc5+ [2]  
 1...S:e6 2.R:c5+ S:c5 3.Rb7+ [1,5]  
 1...B:c6 2.Rb7+ B:b7 3.Sd4+ [1,5]

s#3

8+9

s#-3

Z. Libis *VOX, 2010*



- 1.Se6  
 1...Kc6 2.Sd4+ Kd6 3.Qf6+ Re6  
           4.Kd8 R:f6 5.Bf8+ R:f8# [2,5]  
 1...K:e6 2.Qf5+ Kd6 3.Qg6+ Re6  
           4.Bf8+ Kc6 5.Qe8+ R:e8# [2,5]

s#5

5+2

**Problems Difficulty (26 Solvers)**

<b>ID</b>	<b>Tag</b>	<b>Difficulty</b>	<b>Average</b>	<b>5(Correct Solution)</b>	<b>0 &lt; Pts. &lt; 5</b>	<b>0 (Wrong Solution)</b>	<b>- (No Solution)</b>
18	S#5	1000	0.00	0	0	23	3
15	#7	1000	0.00	0	0	23	3
12	H#5	962	0.19	1	0	22	3
13	#4	924	0.38	1	2	20	3
9	+	876	0.62	1	11	14	0
17	S#3	858	0.71	1	7	15	3
14	#4	834	0.83	2	5	16	3
11	H#3	824	0.88	1	8	14	3
6	#3	780	1.10	4	4	18	0
5	#3	746	1.27	6	2	18	0
8	+	724	1.38	3	18	5	0
3	#2	616	1.92	10	0	16	0
16	S#2	600	2.00	8	4	11	3
2	#2	538	2.31	12	0	14	0
7	=	362	3.19	15	8	3	0
10	H#2	346	3.27	15	4	4	3
4	#3	270	3.65	19	0	7	0
1	#2	76	4.62	24	0	2	0

**Created by WFCC Solving Tournament Manager**