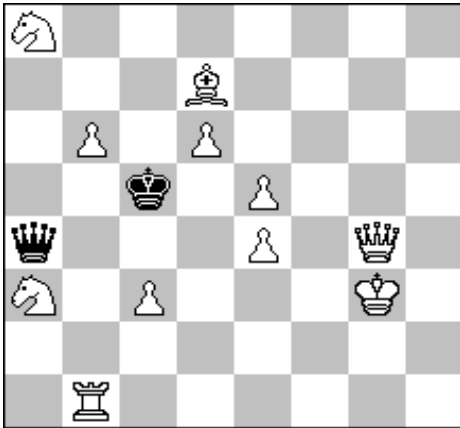


# 26. medzinárodné majstrovstvá Slovenska

Košice 2018 - 1. kolo

**A**



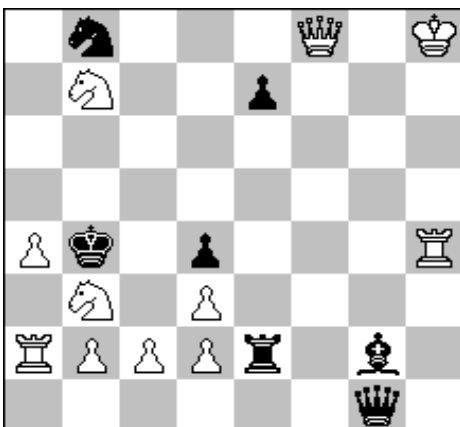
**G.Maleika DieSchwalbe 1974**

**1.Dg8!** (5)

#2

11-2

**B**



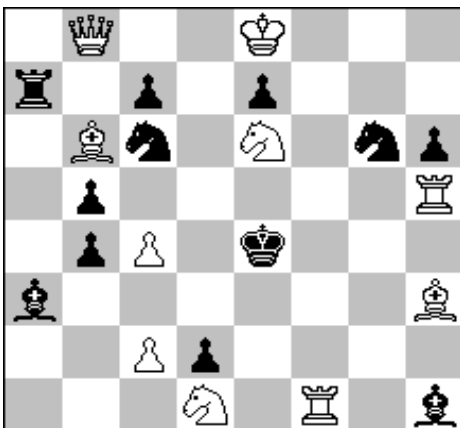
**P.Heyll Troll 2007**

**1.J7a5!** (5)

#2

11-7

**C**



**N.Macleod Schach Echo 1976**

**1.Sg4!** (5)

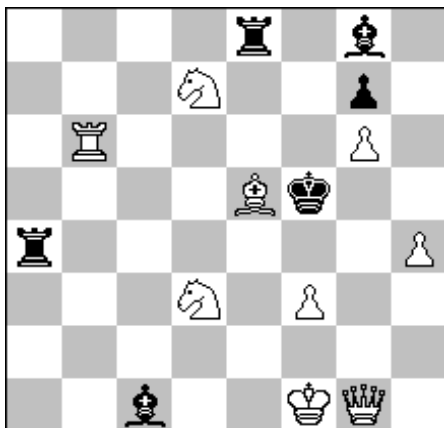
#2

10-12

# 26. medzinárodné majstrovstvá Slovenska

Košice 2018 - 2. kolo

**D**



**S.Dittrich Schach 1983**

**1.Dg3 (2.Dh3) (1)**

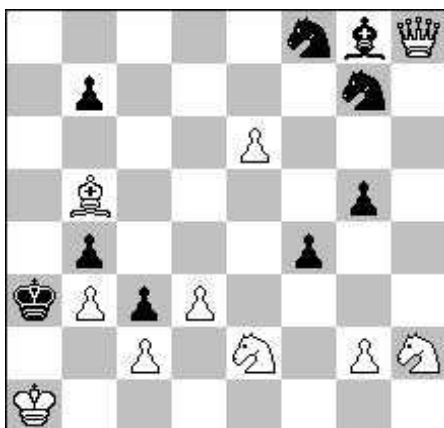
**1..Vh4,Ve6, Se6 (1+1,5+1,5)**

**2.Dh4,Jf4,Sf4**

#3

9-6

**E**



**M.Winkler Die Schwalbe 1939**

**1.Jf3 (2.Dh1) (0,5)**

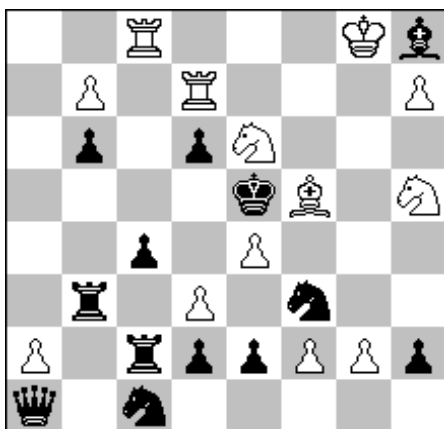
**1..Jh5,Jh7,Sh7 (1,5+1,5+1,5)**

**2.Jd2,Je5,Jc3**

#3

10-9

**F**



**Vladimirov-Lošinskij 1.c.Memoriál Oudot 1976**

**1.Ve8 (2.d4) (1)**

**1...Vd3,cd,Sf6,Jd3 (1+1+1+1)**

**2.b8J,gf,Jf6,b8D**

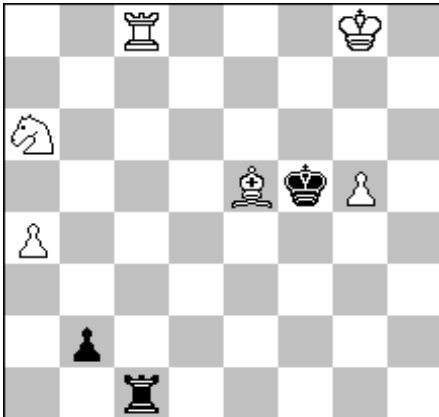
#3

13-13

# 26. medzinárodné majstrovstvá Slovenska

Košice 2018 - 3. kolo

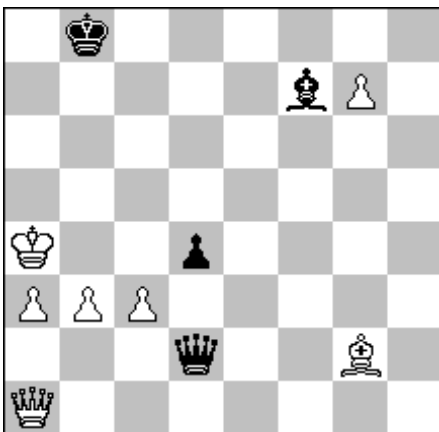
**G**



+

6-3

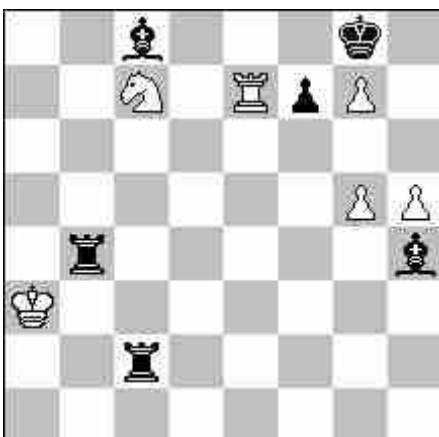
**H**



+

7-4

**I**



=

6-6

M.Hlinka-L-Kekely verzia - originál pre MS 2018

**1.Vb8 (0,5) Vc8 2.Vc8 b1D 3.Vc5 Kg5 4.Vb5 (1,5) Da2**

**5.Kg7 Da4 6.Sf6 Kg4 7.Vb4 (1,5) Kh5! 8.Vd4 Dc4 9.Jc5**

**Db4 10.Kf7 (1,5) Dc5 11.Vh4**

**V.Gerasimov 2.cTehtavaniekka 2009-2010**

**1.Dh1 (0,5) Sb3 2.Kb5 Dd3 3.Kb6 Dg6 4.Sc6 (1,5) Dg7**

**5.Dh2 Kc8 6.Dd6 dc 7.Sg2 (2) Dd7 8.Sh3 Dh3 9.Dc7 (1)**

**V.Korolkov 3.-4.c.Všestojuznyje pervenstva 1945**

**1.h6 (0,5) Sd7 2.Jd5 Va4 3.Kb3 Sg5 4.Vd7 (1,5)**

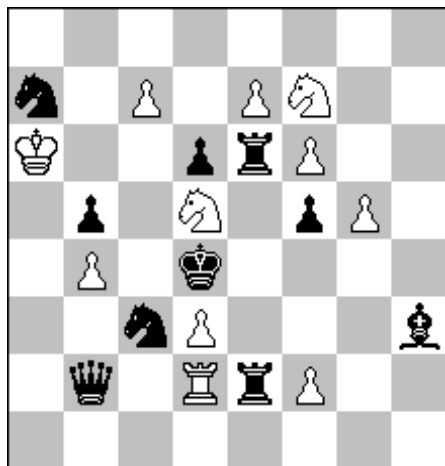
**4..Vcc4 5.Vd8 Sd8 6.Jf6 Sf6 7.h7 (1,5) Kg7 8.h8D Kh8**

**4..Vac4 5.Vd8 Sd8 6.Je7 Se7 7.h7 (1,5) Kg7 8.h8D Kh8**

# 26. medzinárodné majstrovstvá Slovenska

Košice 2018 - 4. kolo

**J**



h#2 71.11 11-10

**J.Godefroy-Martin Feenschach 1982**

- 1.Vf6 Jf4 2.Jd5 Je2
- 1.V6e5 Jc3 2.Vd5 Je2
- 1.Jc6 Jc3 2.d5 Jb5
- 1.Jd5 Je5 2.Dc3 Jf3
- 1.V2e5 Jf4 2.Vd5 Je6
- 1.Db3 Je3 2.Dd5 Jc2
- 1.Sg2 Je3 2.Sd5 Jf5

1 - 2 - 3 - 4 - 5 - 6 - 7 riešení  
1 - 1,5 - 2 - 3 - 3,5 - 4 - 5 bodov

**K**



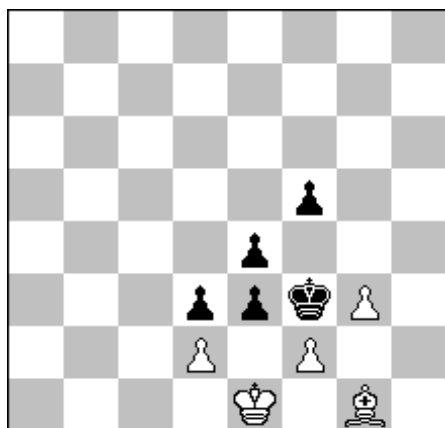
h#3 41.11.11 3-16

**V.Alaikov 1.c. Feenschach 1981**

- 1.Ke4 Sd8 2.Ke3 Sh4 3.Ke2 Ve1
- 1.Kd5 Va1 2.Kc5 Va3 3.Kb5 Va5
- 1.Kf5 Vg3 2.Kg5 Sd8 3.Kh5 Vh3
- 1.Ke6 Vg4 2.Ke7 Vg6 3.Ke8 Ve6

1 riešenie = 1 bod      2 riešenia = 2,5 bodu  
3 riešenia = 4 body      3 riešenia = 5 bodov

**L**



h#5 21.11.... 5-5

**A.Toger Variantim 2003**

- 1.ed Kf12.e3 Sh2 3.Ke4 Kg2 4.e2 f3

5.Ke3 Sg1 (2,5)

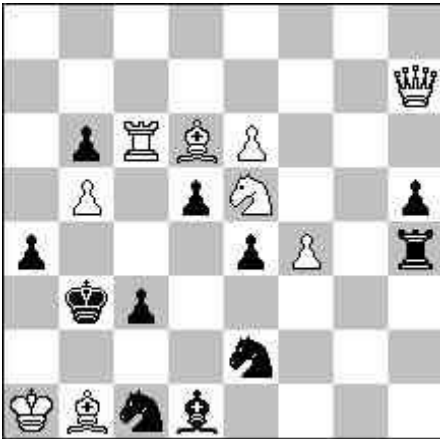
- 1.Kg2 f3 2.e2 Sd4 3.Vg3 Sf6 4.Kf4 Kf2

5.e3 de (2,5)

# 26. medzinárodné majstrovstvá Slovenska

Košice 2018 - 5. kolo

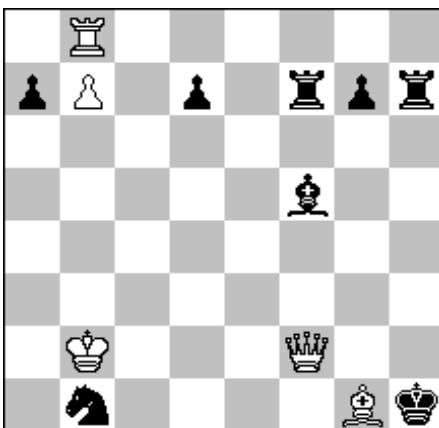
**M**



#4

9-11

**N**



#5

5-8

**O**



#7

8-12

**J.Vladimirov The Problemist 1987**

**1.Jf3 (2.Vc3 Kc3 3.Dc7) (1)**

**1..Vh2 2.Sf8 (3.De7) (1)**

**2..Jd3,Sc2 3.Jd2 (1)**

**1..d4 2.Vc8 (3.Dc7) (1)**

**2 Jc-,a3 3.Jd2,Da7 (0,5+0,5)**

**H.Lepuschutz Springaren 1950**

**1.Vh8 (2.Vh7,Sh2) Vh8 2.b8D Vb8 3.Ka1 (3)**

**3..Vb2,Vh8 4.Kb2,Sh2 (1+1)**

**H.P.Rehm Spec.č.u. The Problemist 1986**

**1.Sf3 (2.Vg4) Dc8 2.Sh5 Sc6 3.Sg4 De8 4.Sf3 (2)**

**4..Je2 5.Se2 Dg6 6.Vg6 (1)**

**4..Sd7 5.Sh5 Je2 6.Se2 (1)**

**4..Dg6 5.Vg6 Je2 6.Se2 (1)**

# 26. medzinárodné majstrovstvá Slovenska

Košice 2018 - 6. kolo

**P**



S#2

9-15

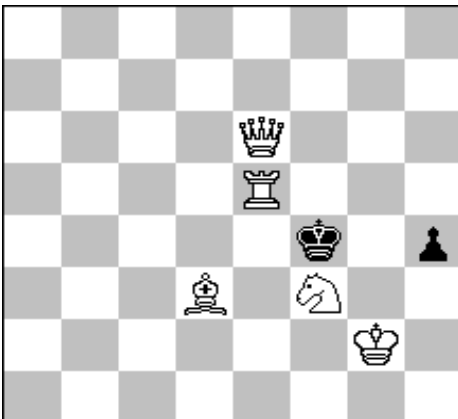
**H.Bartolovic 1.c. MAT 1977**

**1.Vd1 (2.De3) (1)**

**1...Sb4,S-/edJ,Df4,Dh6 (1+1+1+1)**

**2.Vd4,Vd4,Df4,Df5**

**Q**



S#4

B: Ve5-h2

5-2

**J.Holubec 2016 originál pre 26. MS**

**A: 1.Jh2! h3 2.Kh1 Kg3 3.Dg4 Kf2 4.Dg2 (2,5)**

**B: 1.Dh6 Kg4 2.Jg1 h3 3.Kh1 Kg3 4.Vg2 (2,5)**

**R**



S#7

9-15

**M.Herzberg 3.c.Schw. sachztg. 1991-2**

**1.Da8! (2.Jb6 Kb4 3.Jd5 Kc4 4.Vb4 cb  
5.Da6 Kc5 6.Db6 Kc4 7.Dd4) (2,5)**

**1...Dh4 2.Sb5 Kb4 3.Sa4 Kc4 4.Jb6 Kb4  
5.Jd5 Kc4 6.Sb3 Vb3 7.Jd2 (2,5)**

**Problems Difficulty (15 Solvers)**

<b>ID</b>	<b>Tag</b>	<b>Difficulty</b>	<b>Average</b>	<b>5(Correct Solution)</b>	<b>0 &lt; Pts. &lt; 5</b>	<b>0 (Wrong Solution)</b>	<b>- (No Solution)</b>
12	H#5	1000	0.00	0	0	5	10
18	S#7	934	0.33	0	2	6	7
8	+	894	0.53	1	3	11	0
7	+	874	0.63	1	9	5	0
13	#4	640	1.80	1	8	5	1
9	=	634	1.83	4	9	2	0
15	#7	586	2.07	1	8	5	1
6	#3	520	2.40	7	1	7	0
3	#2	466	2.67	8	0	7	0
11	H#3	414	2.93	8	1	0	6
14	#5	400	3.00	5	5	2	3
16	S#2	280	3.60	10	1	4	0
1	#2	266	3.67	11	0	4	0
17	S#4	234	3.83	8	7	0	0
10	H#2	174	4.13	3	12	0	0
4	#3	66	4.67	14	0	1	0
2	#2	66	4.67	14	0	1	0
5	#3	20	4.90	14	1	0	0

**Created by WFCC Solving Tournament Manager**