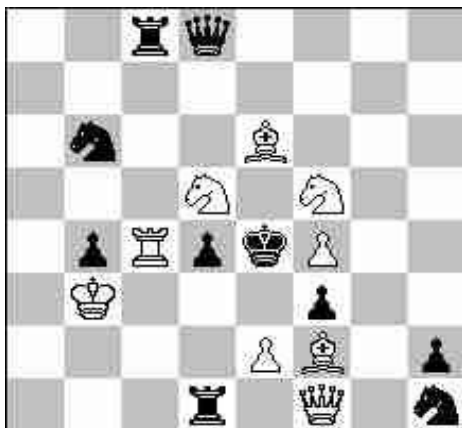


25. medzinárodné majstrovstvá Slovenska

Sliač 2017

A



#2

9-10

B



#2

10-10

C



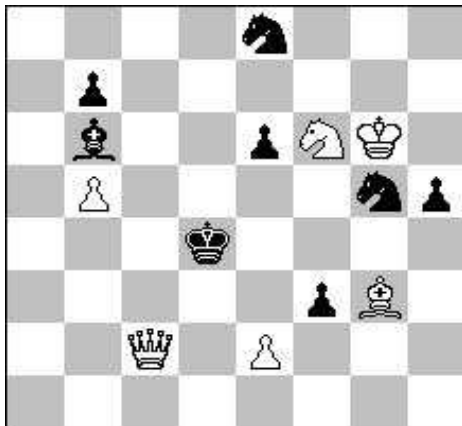
#2

10-10

25. medzinárodné majstrovstvá Slovenska

Sliač 2017

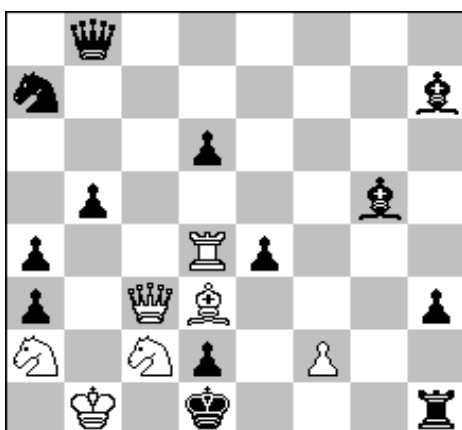
D



#3

6-8

E



#3

7-13

F



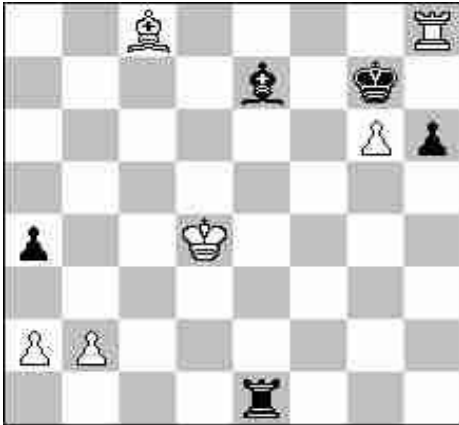
#3

10-10

25. medzinárodné majstrovstvá Slovenska

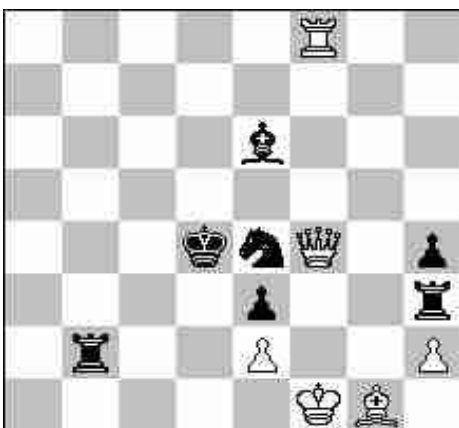
Sliač 2017

G



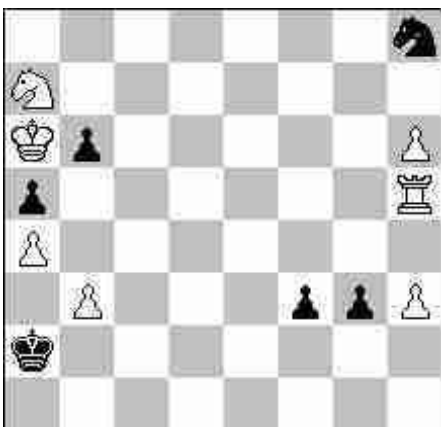
= 6-5

H



= začína čierny
black to play 6-7

I

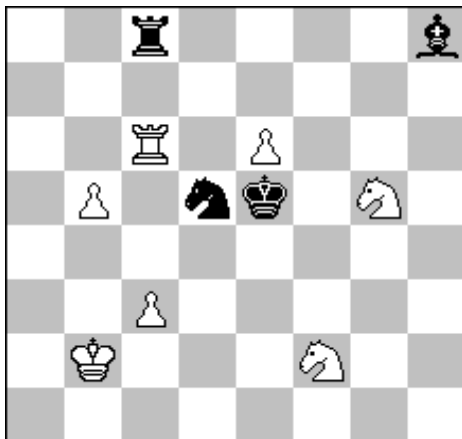


+ 7-6

25. medzinárodné majstrovstvá Slovenska

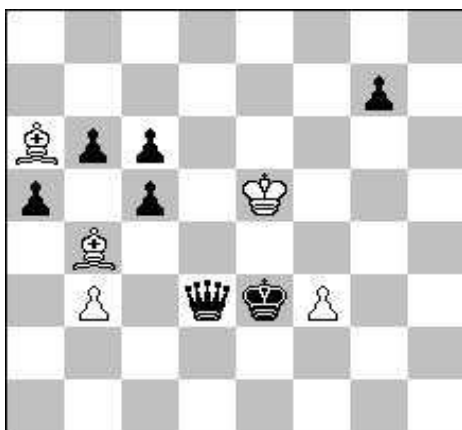
Sliač 2017

J



h#2 51.11 7-4

K



h#3 31.11 .. 5-7

L



h4 41.11... 4-12

25. medzinárodné majstrovstvá Slovenska

Sliač 2017

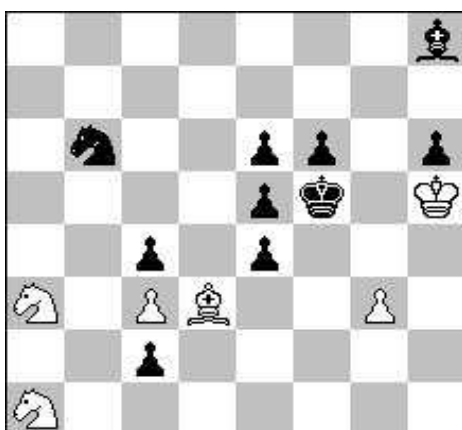
M



#4

12-11

N



#6

6-10

O



#7

6-10

